

XXX Pol Panel Hybrid Antenna 698-960/2×1710-2690MHz 65°/32° 16/20dBi 2-12°/ 2-10°

Replaceable RET

**Electrical Specifications**

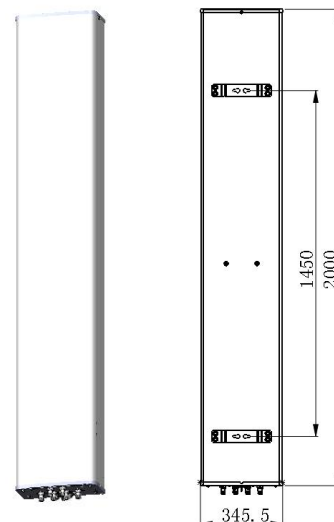
Frequency Range (MHz):	698-960(R1)			1710-2690(Y1,Y2)		
	698-806	806-880	880-960	1710-1880	1880-2170	2300-2690
Gain (dBi):	14.1±0.5	15.0±0.5	15.4±0.5	17.9±0.5	18.4±0.5	19.4±0.5
Return Loss (dB):	>14 (VSWR<1.5)					
Polarization:	±45°					
Horizontal 3dB Beamwidth (°):	68	67	64	2×35	2×31	2×25
Horizontal Beam Pointing (°):	/			±29	±26	±23
Vertical 3dBBeamwidth (°):	12.4	10.8	10	6.9	5.8	5.2
Electrical Downtilt (°):	2°-12° Independently Continuously Adjustable			2°-10° Independently Continuously Adjustable		
RET Type:	Cascade SRET, AISG 2.0, Upgradeable					
1 <sup>st</sup> Upper Sidelobe Suppression(dB) :	15	14	13	13	14	15
Front to Back Ratio(dB):	24	26	26	26	26	27
CPR at Boresight(dB):	20	17	20	17	18	14
CPR at Sector(dB):	12	9	12	/	/	/
Polarization Isolation (dB):	>25			>25		
Interband Isolation (dB):	>25(R1// Y1,Y2)					
Max. Power Per Port (W):	250			200		
Intermodulation IM3 (dBc):	<-150 (2×43 dBm)					
Impedance (ohm):	50					
Lightning Protection:	DC Grounded					
Connector Type:	6×4.3-10 Female					

**BASTA Electrical Specification**

Frequency Range(MHz):	698-960(R1)			1710-2690(Y1,Y2)		
	698-806	806-880	880-960	1710-1880	1880-2170	2300-2690
Average Gain by all Beam Tilts(dBi):	13.9	14.7	15.3	17.8	18.3	18.9
Gain by all Beam Tilts Tolerance(dB):	±0.8	±0.6	±0.4	±0.9	±1.0	±1.3
Average Gain by Beam Tilt (dBi):	2° 14.1	2° 15.0	2° 15.4	2° 17.8	2° 18.3	2° 19.4
	7° 14.0	7° 14.9	7° 15.4	6° 17.9	6° 18.4	6° 19.1
	12° 13.7	12° 14.3	12° 15.0	10° 17.5	10° 18.0	10° 18.0
3dB Horizontal Beamwidth Tolerance(°):	±3.0	±1.1	±1.5	±1.9	±2.5	±1.9
3dB Vertical Beamwidth Tolerance(°):	±1.0	±0.6	±0.9	±0.9	±0.5	±1.4
1 <sup>st</sup> Upper Sidelobe Suppression (dB):	15	14	13	13	13	14
Front to back Total Power at 180° ±	24	25	25	25	26	26
CPR at Boresight(dB):	20	17	18	16	17	13
CPR at Sector(dB):	12	8	12	/	/	/

## Mechanical Data

Antenna Dimensions (mm):	2000×339×169
Packing Dimensions (mm):	2290×425×260
Antenna Net Weight/Bracket (kg):	25/5.9
Antenna Gross Weight (kg):	35
Radome Material:	Fiberglass
Pipe OD (mm):	50-114
Mounting Kits (Included):	BA.K.04.00069101 Adjustable Downtilt 0°-12°



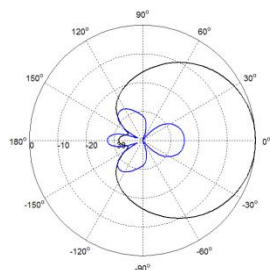
## Environmental Ratings

Humidity:	95%RH@+30℃
Temperature (℃):	-40~+60
Wind Load @150 km/h (N):	Frontal/Lateral/Rearside: 1210/359/1412
Max. Wind velocity (km/h):	200

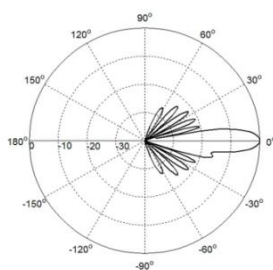
## Internal RET Specifications

RET Type:	Replaceable RET
RET protocol:	AISG 2.0 /3 GPP
Input voltage range(V):	10-30 DC
Power consumption(W):	< 5 (motor activated, single RET) < 1 (stand by, single RET), < 1.5 (stand by, 12V)
Adjustment time (full range) (s):	< 120 (typically, depending on antenna type)
RET connector:	1 pair of AISG 5 pin male & female
Pin assignment according AISG:	8 pin circular connector conforming to IEC 60130-9 - Ed. 3.0
Lightning protection (kA):	5 (8/20 μs Differential mode), 8 (8/20 μs 共模 Common mode)

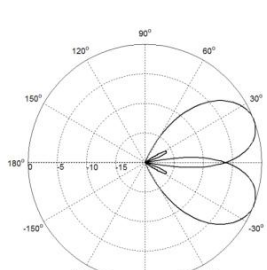
## Typical Patterns



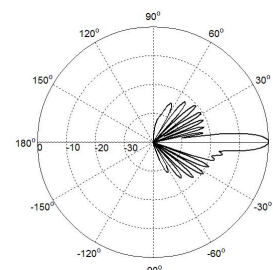
Azimuth(Low band)



Elevation(Low band)

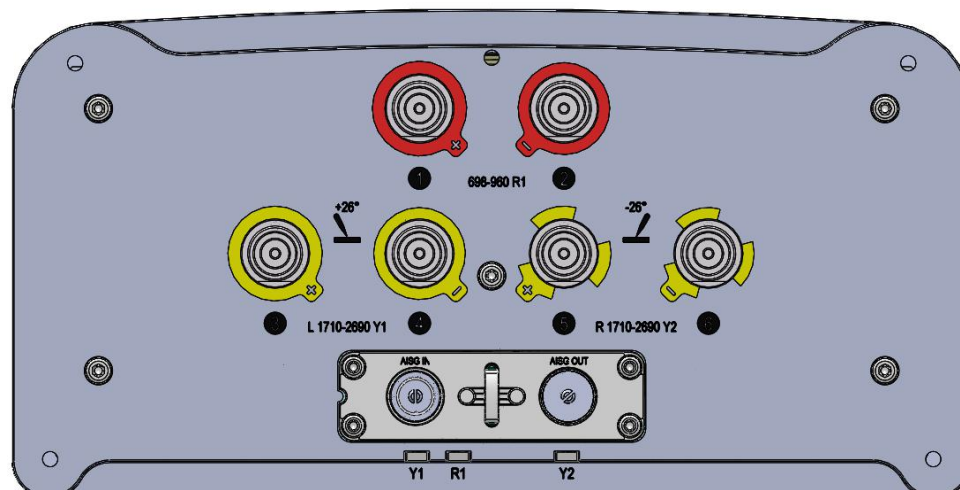


Azimuth(Dual Beam)



Elevation(Dual Beam)

## Bottom View



**Correlation Table**

Frequency range	Array	Connector	RET S/N
698– 960 MHz	R1	1-2	BRxxx.....R1
1710–2690 MHz	Y1	3-4	BRxxx.....Y1
1710–2690 MHz	Y2	5-6	BRxxx.....Y2

