

XXXXXX Pol Panel Antenna 2×698-960/4×1710-2690MHz 65°/65° 17/17.5dBi 2°-12°/2°-12°

Replaceable RET

Electrical Specifications

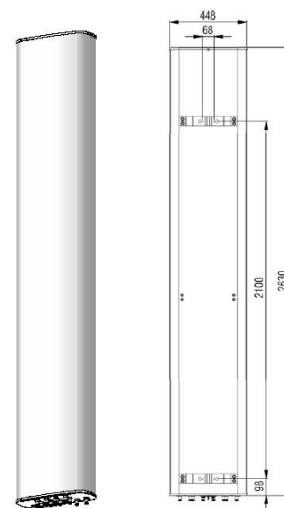
Frequency Range (MHz):	698-960(R1,R2)			1710-2690(Y1,Y3)			1710-2690(Y2,Y4)		
	698-806	806-880	880-960	1710 -2170	2300 -2490	2490 -2690	1710 -2170	2300 -2490	2490 -2690
Gain (dBi):	15.5 ±0.5	16.0 ±0.5	16.5 ±0.5	16.3 ±0.5	17.3 ±0.5	17.0 ±0.5	16.0 ±0.5	17.0 ±0.5	16.7 ±0.5
Return Loss (dB):	>14 (VSWR<1.5)								
Polarization:	±45°								
Horizontal 3dB Beamwidth (°):	69	64	60	69	62	58	69	62	58
Vertical 3dB Beamwidth (°):	8.5	7.0	6.5	7.5	6.0	5.3	7.5	6.0	5.3
Electrical Downtilt (°):	2-12 Independently Continuously Adjustable			2-12 Independently Continuously Adjustable					
RET Type:	Cascade SRET, AISG 2.0, Upgradeable								
1 st Upper Sidelobe Suppression (dB):	15	15	15	15	15	15	15	15	15
Front to Back Ratio (dB):	22	23	24	25	25	25	25	25	25
Cross Polar Ratio 0° (dB):	15	15	15	15	15	15	15	15	15
Intraband Isolation (dB):	>25								
Interband Isolation (dB):	>28								
Power Rating (W):	250			200					
Intermodulation IM3 (dBc):	<-150(2×43 dBm)								
Impedance (ohm):	50								
Lightning Protection:	DC Grounded								
Connector Type:	12×4.3-10 Female								

Mechanical Data

Antenna Dimensions (mm):	2630×448×185
Packing Dimensions (mm):	2890×530×275
Antenna Net Weight/Bracket (kg):	44 / 5.9
Antenna Gross Weight (kg):	56
Radome Material:	Fiberglass
Pipe OD (mm):	50-115
Mounting Kits (Included):	BA.K.04.00069311, Adjustable Downtilt 0°-10°

Environmental Ratings

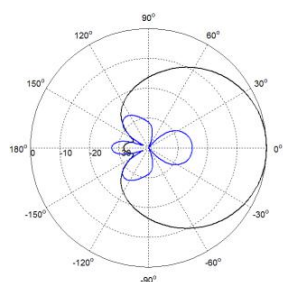
Humidity:	95%RH@+30°C
Temperature (°C):	-40~+70
Wind Load @150 km/h (N):	Frontal/Lateral/Rearside: 1151/293/1365
Max. Wind velocity(km/h):	200



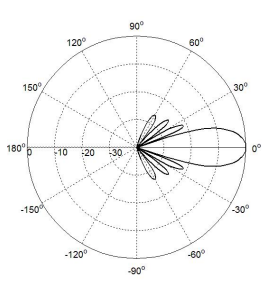
Internal RET Specifications

RET type:	Replaceable RET
RET protocol:	AISG 2.0 /3 GPP
Input voltage range(V):	10-30 DC
Power consumption(W):	< 5 (motor activated ,single RET) < 1 (stand by, single RET), < 1.5 (stand by, 12V)
Adjustment time (full range) (s):	< 120 (typically, depending on antenna type)
RET connector:	1 pair of AISG 5 pin male & female
Pin assignment according AISG:	8 pin circular connector conforming to IEC 60130-9 - Ed. 3.0
Lightning protection (kA):	5 (8/20 μ s Differential mode), 8 (8/20 μ s Common mode)

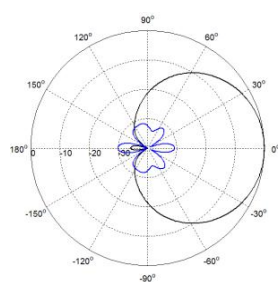
Typical Patterns



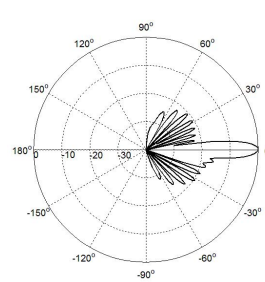
Azimuth(Low Band)



Elevation(Low Band)

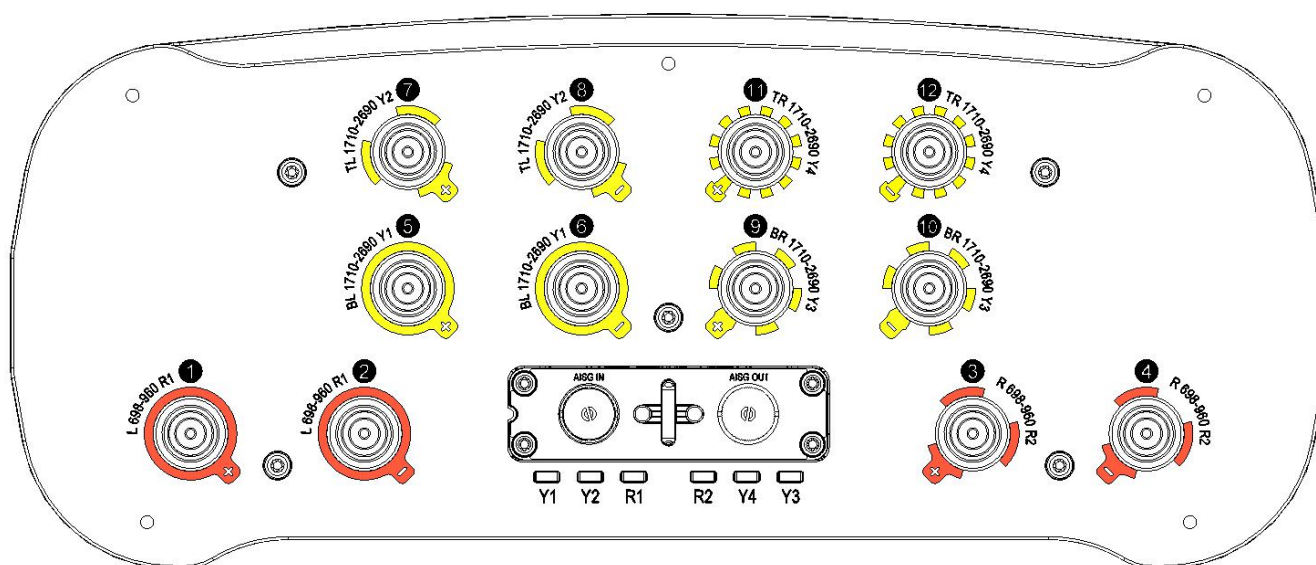


Azimuth(High Band)



Elevation(High Band)

Bottom View



Correlation Table

Frequency range	Array	Connector
698–960 MHz	R1	1-2
698–960 MHz	R2	3-4
1710–2690 MHz	Y1	5-6
1710–2690 MHz	Y2	7-8
1710–2690 MHz	Y3	9-10
1710–2690 MHz	Y4	11-12

