

U2L4PX308.10P-DH2-2C

XXXXXXXXX Pol Panel Antenna 2×698-960/2×1710-2170/2×2490-2690/2×1710-2690MHz
65°/65°/65°/65° 15/16/16/17dBi 2°-12°/2°-12°/2°-12°/2°-12° Replaceable RET

Electrical Specifications

Frequency Range (MHz):	694-960(R1,R2)			1710-2690(Y1,Y4)		
	698-806	806-880	880-960	1710-2170	2300-2490	2490-2690
Gain (dBi):	13.9	14.8	14.7	16.1	16.7	16.4
Return Loss (dB):	>14 (VSWR<1.5)					
Polarization:	±45°					
Horizontal 3dB Beamwidth (°):	62	60	62	70	63	61
Vertical 3dB Beamwidth (°):	11.6	10.3	9.6	7.5	6.0	5.5
Electrical Downtilt (°):	2-12 Independently Continuously Adjustable					
RET Type:	Cascade SRET, AISG 2.0, Upgradeable					
1 st Upper Sidelobe Suppression (dB):	14	14	14	15	15	15
Intraband Isolation (dB):	>25					
Max. Power Per Port (W)	250			200		
Intermodulation IM3 (dBc):	<-150(2×43 dBm)					
Impedance (ohm):	50					
Lightning Protection:	DC Grounded					

Frequency Range (MHz):	1710-2170(B1,B2)			2490-2690(Y2,Y3)
	1710-1880	1880-2025	2025-2170	2490-2690
Gain (dBi):	15.3	15.3	15.4	15.6
Return Loss (dB):	>14 (VSWR<1.5)			
Polarization:	±45°			
Horizontal 3dB Beamwidth (°):	70	69	66	62
Vertical 3dB Beamwidth (°):	7.7	7.3	7.0	5.5
Electrical Downtilt (°):	2-12 Independently Continuously Adjustable			
RET Type:	Cascade SRET, AISG2.0, Upgradeable			
1 st Upper Sidelobe Suppression (dB):	15	14	15	15
Intraband Isolation (dB):	>25			
Interband Isolation (dB):	>25			
Max. Power Per Port (W) :	200			200
Intermodulation IM3 (dBc):	<-150 (2×43 dBm)			
Impedance (ohm):	50			
Lightning Protection:	DC Grounded			

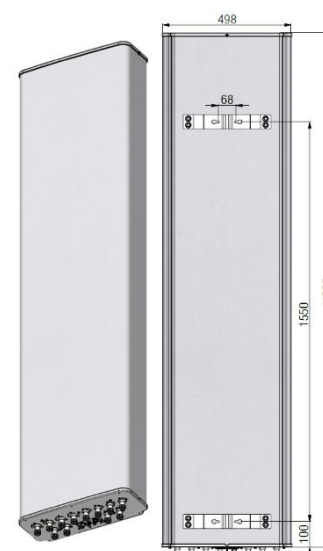
BASTA Electrical Specification

Frequency Range(MHz):	698-960(R1,R2)			1710-2690(Y1,Y4)		
	698-806	806-880	880-960	1710-2170	2300-2490	2490-2690
Average Gain by all Beam Tilts(dBi):	13.7	14.6	14.6	15.9	16.4	16.2
Gain by all Beam Tilts Tolerance(dB):	±0.8	±0.5	±0.5	±0.7	±0.6	±0.6
Average Gain by Beam Tilt (dBi):	2° 13.7	2° 14.5	2° 14.4	2° 16.0	2° 16.6	2° 16.4
	7° 13.9	7° 14.8	7° 14.7	7° 16.1	7° 16.7	7° 16.4
	12° 13.5	12° 14.4	12° 14.6	12° 15.7	12° 15.9	12° 15.8
3dB Horizontal Beamwidth Tolerance(°):	±9.0	±7.0	±5.7	±7.4	±5.7	±5.3
3dB Vertical Beamwidth Tolerance(°):	±0.9	±0.6	±0.6	±0.8	±0.5	±0.4
Upper Side Lobe Suppression, Peak to 20°(dB):	14	14	14	14	14	14
Front to back Total Power at 180° ± 30°(dB):	20	21	20	24	24	24
CPR at Boresight(dB):	15	15	15	15	15	15

Frequency Range(MHz):	1710-2170(B1,B2)			2490-2690(Y2,Y3)
	1710-1880	1880-2025	2025-2170	2490-2690
Average Gain by all Beam Tilts(dBi):	15.2	15.3	15.2	15.6
Gain by all Beam Tilts Tolerance(dB):	±0.4	±0.4	±0.6	±0.6
Average Gain by Beam Tilt (dBi):	2° 15.3	2° 15.3	2° 15.0	2° 15.7
	7° 15.3	7° 15.3	7° 15.4	7° 15.8
	12° 15.0	12° 15.2	12° 15.2	12° 15.2
3dB Horizontal Beamwidth Tolerance(°):	±6.0	±6.0	±6.0	±8.0
3dB Vertical Beamwidth Tolerance(°):	±0.4	±0.4	±0.4	±0.4
Upper Side Lobe Suppression, Peak to 20°(dB):	15	14	14	14
Front to back Total Power at 180° ± 30°(dB):	24	24	24	25
CPR at Boresight(dB):	15	15	15	15

Mechanical Data

Antenna Dimensions (mm):	1995×498×197
Packing Dimensions (mm):	2270×585×290
Antenna Net Weight /Bracket (kg):	36.5/5.9
Antenna Gross Weight (kg):	48.5
Radome Material:	Fiberglass
Pipe OD (mm):	50-115
Mounting Kits (Included):	BA.K.04.00069121, Adjustable Downtilt 0°-14°
Connector Type:	16×4.3-10 Female



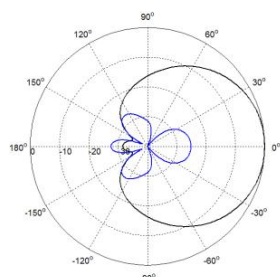
Environmental Ratings

Humidity:	95%RH@+30°C
Temperature (°C):	-40~+70
Wind Load @150 km/h (N):	Frontal/Lateral/Rearside: 1288/228/1307
Max. Wind velocity(km/h):	200

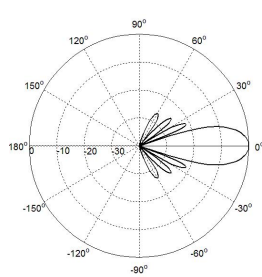
Internal RET Specifications

RET type:	Replaceable RET
RET protocol:	AISG2.0 /3GPP
Input voltage range(V):	10-30 DC
Power consumption(W):	< 5 (motor activated, single RET) < 1 (stand by, single RET), < 1.5 (stand by, 12V)
Adjustment time (full range) (s):	< 120 (typically, depending on antenna type)
RET connector:	1 pair of AISG 5 pin male & female
Pin assignment according AISG:	8 pin circular connector conforming to IEC 60130-9 - Ed. 3.0
Lightning protection (kA):	5 (8/20 μs Differential mode), 8 (8/20 μs Common mode)

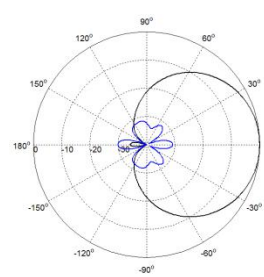
Typical Patterns



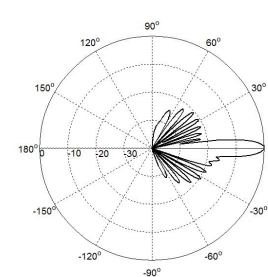
Azimuth(Low band)



Elevation(Low band)



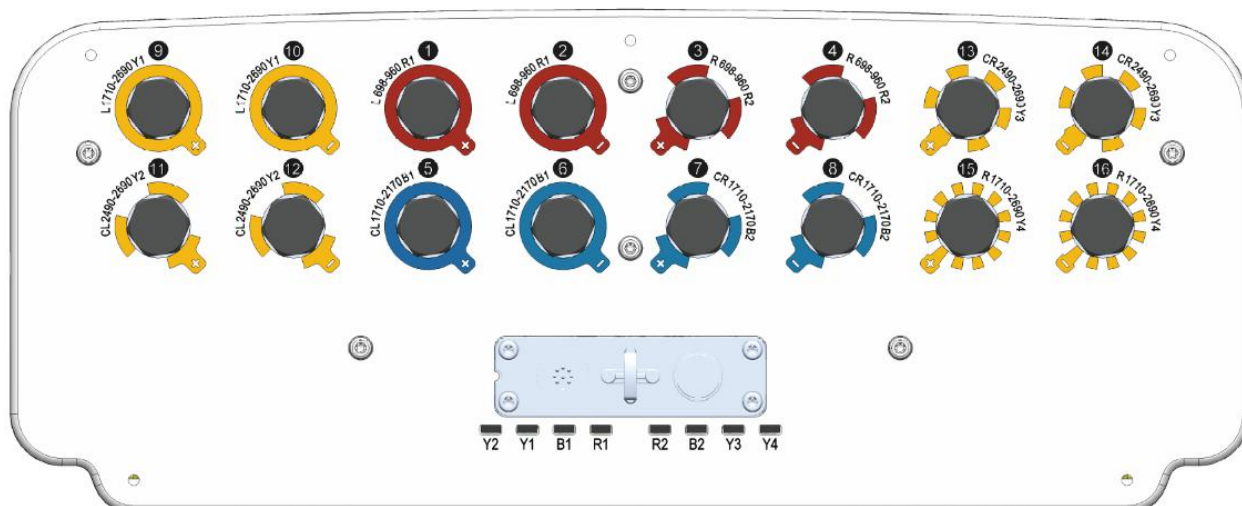
Azimuth(High band)



Elevation(High band)

U2L4PX308.10P-DH2-2C

Bottom View



Correlation Table

Frequency range	Array	Connector	RET
698– 960 MHz	R1	1-2	BRxxx.....R1
698– 960 MHz	R2	3-4	BRxxx.....R2
1710–2170 MHz	B1	5-6	BRxxx.....B1
1710–2170 MHz	B2	7-8	BRxxx.....B2
1710–2690 MHz	Y1	9-10	BRxxx.....Y1
1710–2690 MHz	Y4	15-16	BRxxx.....Y4
2490–2690 MHz	Y2	11-12	BRxxx.....Y2
2490–2690 MHz	Y3	13-14	BRxxx.....Y3

