

Product Data Sheet

**U2L4PX305.10P-E2-C**



XXXXXX Pol Panel Antenna 2×698-960/4×1710-2690MHz 65°/65° 14/17.5dBi 2°-12°/2°-12°  
 Replaceable RET

**Electrical Specifications**

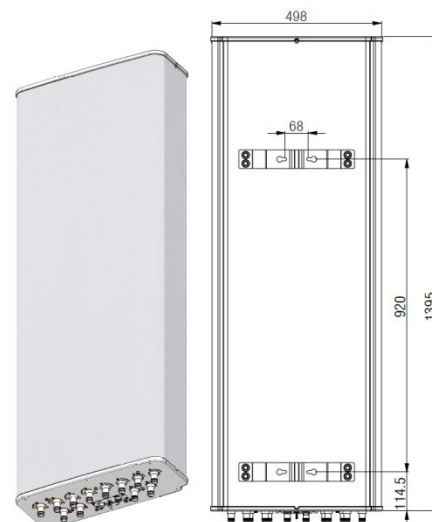
Frequency Range (MHz):	698-960(R1,R2)			1710-2690(Y2,Y3)			1710-2690(Y1,Y4)		
	698-806	806-880	880-960	1710 -2170	2300 -2490	2490 -2690	1710 -2170	2300 -2490	2490 -2690
Gain (dBi):	13.2 ±0.5	13.7 ±0.5	14.2 ±0.5	16.3 ±0.5	17.3 ±0.5	17.0 ±0.5	16.0 ±0.5	17.0 ±0.5	16.7 ±0.5
Return Loss (dB):	>14 (VSWR<1.5)								
Polarization:	±45°								
Horizontal 3dB Beamwidth (°):	70	65	60	68	62	58	68	62	58
Vertical 3dB Beamwidth (°):	19.5	18	16.5	7.5	6.0	5.3	7.5	6.0	5.3
Electrical Downtilt (°):	2-12 Independently Continuously Adjustable			2-12 Independently Continuously Adjustable					
1 <sup>st</sup> Upper Sidelobe Suppression (dB):	15	15	15	15	15	15	15	15	15
Front to Back Ratio @180±30°(dB):	22	23	24	25	25	25	25	25	25
Cross Polar Ratio 0° (dB):	15	15	15	15	15	15	15	15	15
Cross Polar Ratio 60° (dB):	10	9	8	9	8	7	9	8	7
Intraband Isolation (dB):	>25								
Interband Isolation (dB):	>25								
Max. Power Per Port (W):	250			200					
Intermodulation IM3 (dBc):	<-150(2×43 dBm)								
Impedance (ohm):	50								
Lightning Protection:	DC Grounded								
Connector Type:	12×4.3-10 Female								

**Mechanical Data**

Antenna Dimensions (mm):	1395×498×197
Packing Dimensions (mm):	1665×585×290
Antenna Net Weight/Bracket (kg):	27/5.9
Antenna Gross Weight (kg):	38
Radome Material:	Fiberglass
Pipe OD (mm):	50-115
Mounting Kits (Included):	BA.K.04.00069151 ,Adjustable Downtilt 0°-20°

**Environmental Ratings**

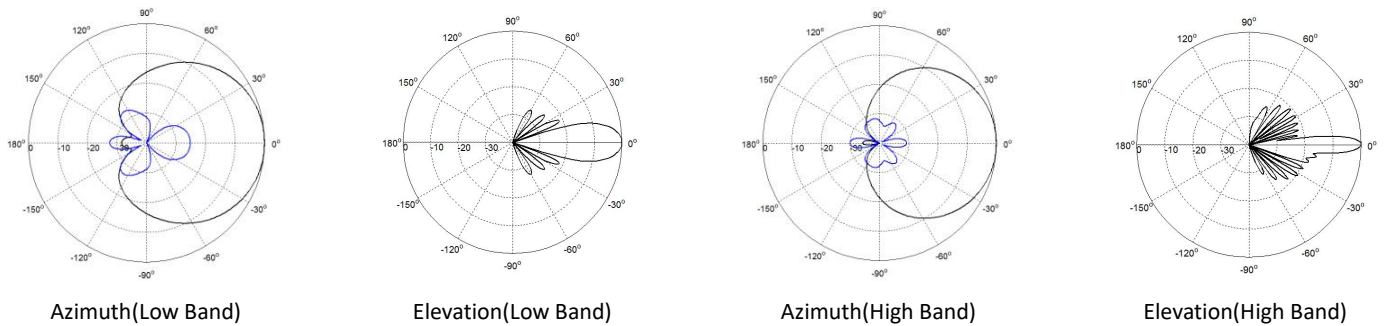
Humidity:	95%RH@+30°C
Temperature (°C):	-40~+70
Wind Load @150 km/h (N):	Frontal/Lateral/Rearside:887/158/900
Max. Wind velocity(km/h):	200



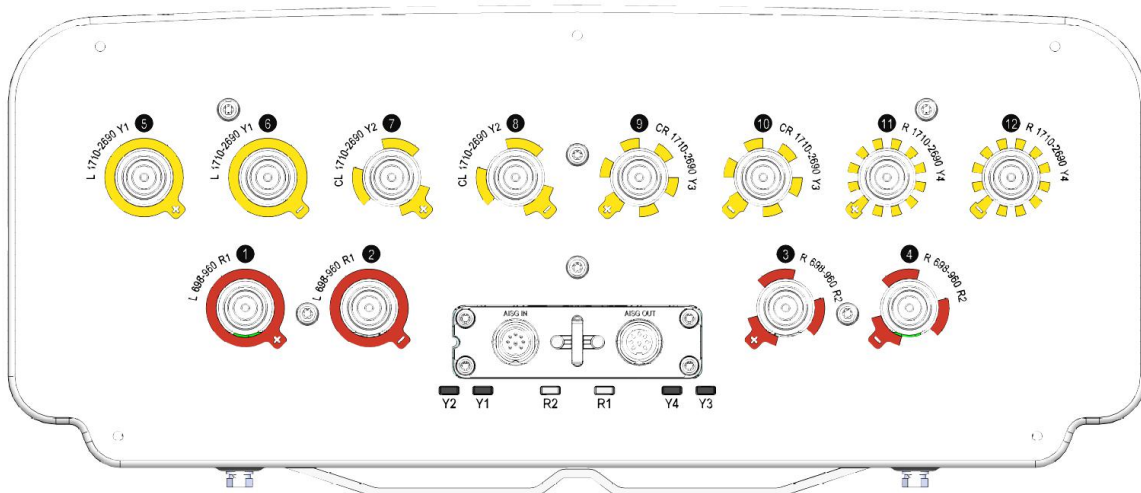
**Internal RET Specifications**

RET type:	Replaceable RET
RET protocol:	AISG2.0 /3GPP
Input voltage range(V):	10-30 DC
Power consumption(W):	< 5 (motor activated ,single RET) < 1 (stand by,single RET), < 1.5 (stand by, 12V)
Adjustment time (full range) (s):	< 120 (typically, depending on antenna type)
RET connector:	1 pair of AISG 5 pin male & female
Pin assignment according AISG:	8pin circular connector conforming to IEC 60130-9 - Ed. 3.0
Lightning protection (kA):	5 (8/20 $\mu$ s Differential mode), 8 (8/20 $\mu$ s Common mode)

**Typical Patterns**



**Bottom View**



**Correlation Table**

Frequency range	Array	Connector
698–960 MHz	R1	1-2
698–960 MHz	R2	3-4
1710–2690 MHz	Y1	5-6
1710–2690 MHz	Y2	7-8
1710–2690 MHz	Y3	9-10
1710–2690 MHz	Y4	11-12

