

XXXX Pol Panel Antenna 2×698-960/2×1710-2690MHz 65°/65° 15.5/17.5dBi 2°-12°/2°-12°

Replaceable RET

Electrical Specifications

Frequency Range (MHz):	698-960(R1,R2)			1710-2690(Y1,Y2)		
	698-806	806-880	880-960	1710-2170	2300-2490	2490-2690
Gain (dBi):	14.3±0.5	14.8±0.5	15.3±0.5	16.3±0.5	17.3±0.5	17.0±0.5
Return Loss (dB):	>14 (VSWR<1.5)					
Polarization:	±45°					
Horizontal 3dB beamwidth (°):	70	65	60	68	62	58
Vertical 3dB beamwidth (°):	11.0	10.5	9.5	7.5	6.0	5.3
Electrical Downtilt (°):	2-12 Independently Continuously Adjustable			2-12 Independently Continuously Adjustable		
RET Type:	Cascade SRET, AISG 2.0, Upgradeable					
1 st Upper Sidelobe Level (dB):	15	15	15	15	15	15
Front to Back Ratio @180±30°(dB):	22	23	24	25	25	25
Cross Polar Ratio 0° (dB):	15	15	15	15	15	15
Cross Polar Ratio 60° (dB):	10	9	8	9	8	7
Intraband Isolation (dB):	>25					
Interband Isolation (dB):	>28					
Max. Power Per Port (W):	250			200		
Intermodulation IM3 (dBC):	<-150 (2×43 dBm)					
Impedance (ohm):	50					
Lightning Protection:	DC Grounded					
Connector Type:	8×4.3-10 Female					

Mechanical Data

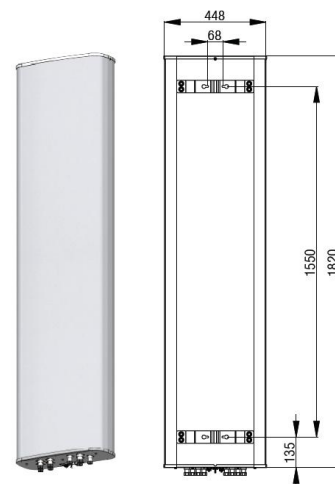
Antenna Dimensions (mm):	1820×448×185
Packing Dimensions (mm):	2160×535×280
Antenna Net Weight/Bracket (kg):	30/5.9
Antenna Gross Weight (kg):	41
Radome Material:	Fiberglass
Pipe OD (mm):	50-114
Mounting Kits (Included):	BA.K.04.00069121, Adjustable Downtilt 0°-14°

Environmental Ratings

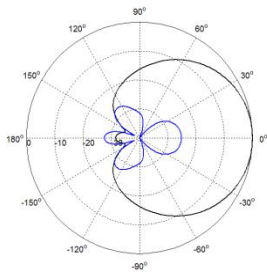
Humidity:	95%RH@+30°C
Temperature (°C):	-50~+60
Wind Load @150 km/h (N):	Frontal/Lateral/Rearside: 784/193/930
Max. Wind velocity(km/h)	200

Internal RET Specifications

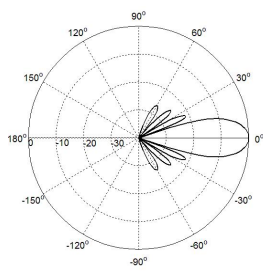
RET type:	Replaceable RET
RET protocol:	AISG2.0 /3GPP
Input voltage range(V):	10-30 DC
Power consumption(W):	< 5 (motor activated , single RET) < 1 (stand by, single RET), < 1.5 (stand by, 12V)
Adjustment time (full range) (s):	< 120 (typically, depending on antenna type)
RET connector:	1 pair of AISG 5 pin male & female
Pin assignment according AISG:	8 pin circular connector conforming to IEC 60130-9 - Ed. 3.0
Lightning protection (kA):	5 (8/20 μs Differential mode), 8 (8/20 μs Common mode)



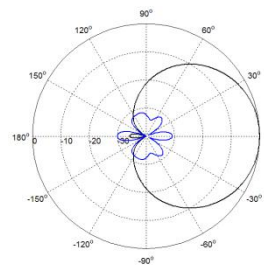
Typical Patterns



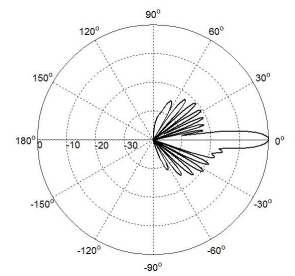
Azimuth(Low Band)



Elevation(Low Band)

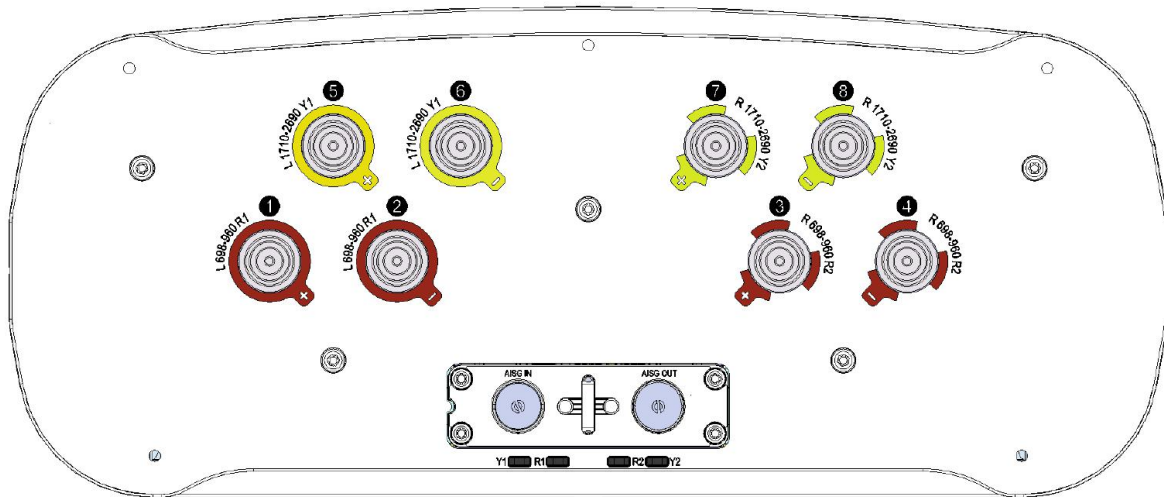


Azimuth(High Band)



Elevation(High Band)

Bottom View



Correlation Table

Frequency range	Array	Connector	RET S/N
698– 960MHz	R1	1-2	BRxxx.....1R1
698– 960MHz	R2	3-4	BRxxx.....2R2
1710–2690MHz	Y1	5-6	BRxxx.....3Y1
1710–2690MHz	Y2	7-8	BRxxx.....4Y2

