

S-VUL4PX2.2.2F3-C

X Pol Panel TD Antenna 3300–3800MHz 80° 10dBi 3° FET

XXXXX Pol 698–960/4×1695–2690MHz 65° /65° 10/11dBi 3° FET

Electrical Specifications (3300-3800MHz)

Electrical Specifications (3300-3800MHz)			
General parameters	Frequency range (MHz):		3300-3800(P1)
	Polarization:		±45°
	Electrical downtilt (°):		3 Fixed
	Connector Type:		1xMQ5,1xMQ4
Calibration and electrical parameters	Coupling factor between calibration port and each antenna port (dB) :		-26±2
	Amp/phase Deviation:		<1.2/12°
	VSWR:		<1.5
	Max. Power Per Port (W):		40
	Co-polarization isolation between ports (dB):		>20
	Cross-polarization isolation between ports (dB) :		>19
Radiation parameters	Single Column	Horizontal 3dB Beamwidth (°):	70±20
		Vertical 3dB Beamwidth (°):	31
		Front to Back Ratio (dB):	23
		Gain (dBi):	9.5±0.5
		Cross polar ratio (dB):	>15 (0°)/>8 (±60°)
	Broadcast Beam	Horizontal 3dB Beamwidth (°):	65±10
		Gain (dBi):	11.0±0.5
		Front to Back Ratio (dB):	25
		Vertical 3dB Beamwidth (°):	31
		Cross polar ratio (dB):	>15 (0°)/>8 (±60°)
	Service Beam @ 0deg	Gain (dBi):	14.5±0.5
		Horizontal 3dB Beamwidth (°):	19
		Horizontal Sidelobe Level (dB):	<-12
		Cross polar ratio (0°) (dB):	15
		Front to Back Ratio (dB):	25
	Service Beam@ 60deg	Gain (dBi):	11.0±0.5
Horizontal 3dB Beamwidth (°):		20	
Horizontal Sidelobe Level (dB):		<-3	

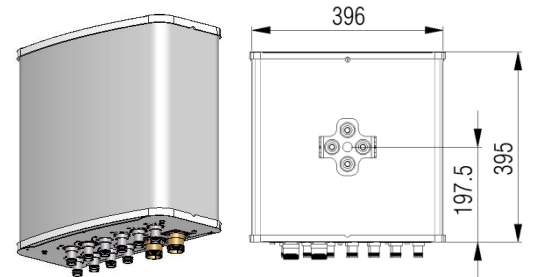
S-VUL4PX2.2.2F3-C

Electrical Specifications (698-960/1695-2690 MHz)

Frequency Range (MHz):	698-960(R1)			1695-2690(Y1,Y2,Y3,Y4)		
	698-806	806-880	880-960	1695-2170	2300-2490	2490-2690
Gain (dBi):	8.3±0.5	9.2±0.5	9.2±0.5	10.0±0.5	10.6±0.5	11.0±0.5
Return Loss (dB):	>14 (VSWR<1.5)					
Polarization:	±45°					
Horizontal 3dB beamwidth (°):	70	69	68	75	65	54
Vertical 3dB beamwidth (°):	50	44	42	42	30	26
Electrical Downtilt (°):	3 Fixed			3 Fixed		
Front to Back Ratio @180±30°(dB):	20	22	23	25	25	25
Cross Polar Ratio 0° (dB):	15	15	15	15	15	15
polarization Isolation (dB):	>20					
Interband Isolation (dB):	>20					
Max. Power Per Port (W):	150			100		
Intermodulation IM3 (dBC):	<-150 (2x43dBm)					
Impedance (ohm):	50					
Lightning Protection:	DC Grounded					
Connector Type:	10x4.3-10 Female					

Mechanical Data

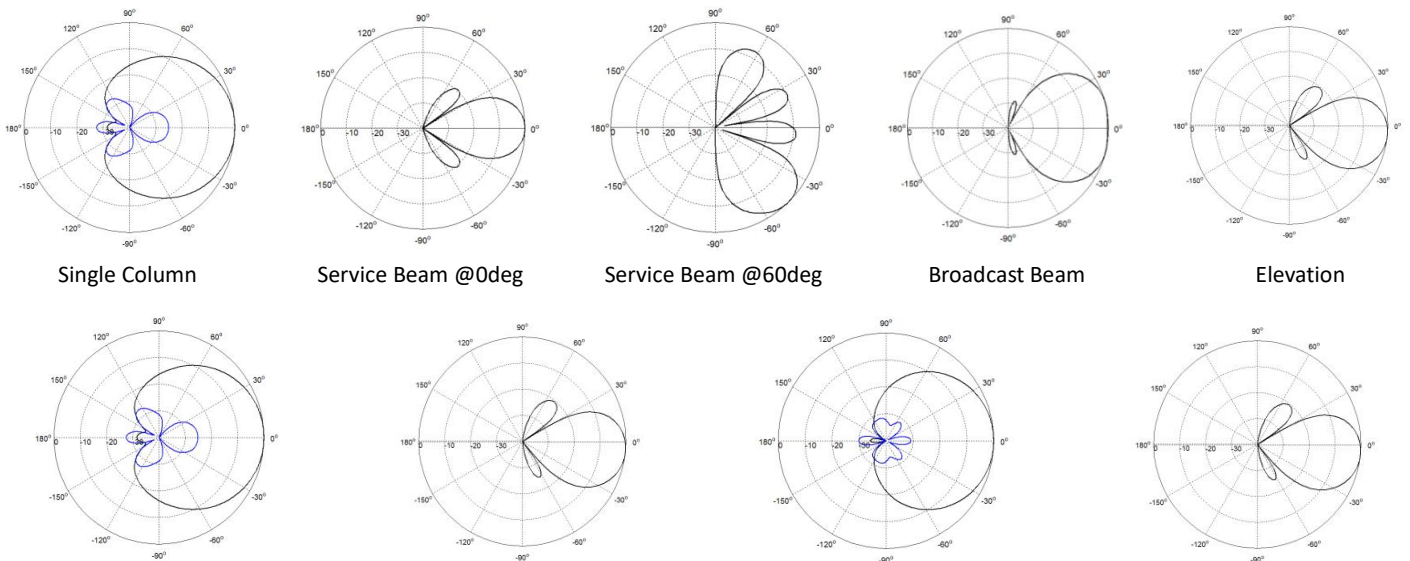
Antenna Dimensions (mm):	395×396×190
Packing Dimensions (mm):	620x480x305
Antenna Net Weight/Bracket (kg):	6.8/2.6
Antenna Gross Weight (kg):	10.5
Radome Material:	Fiberglass
Pipe OD (mm):	70-110
Mounting Kits (Included):	BA.K.04.00052, horizontal adjustable -35°-+35°, vertical adjustable -45°-+45°



Environmental Ratings

Humidity:	95%RH@+30°C
Temperature (°C):	-50~+60
Wind Load @150 km/h (N):	Frontal/Lateral/Rearside:164/47/216
Max. Wind velocity(km/h) :	200

Typical Patterns



Azimuth(698-960MHz)

Elevation(698-960MHz)

Azimuth(1695-2690MHz)

Elevation(1695-2690MHz)



S-VUL4PX2.2.2F3-C

Correlation Table

Frequency Range	Array	Connector
698–960 MHz	R1	1-2
1695–2690 MHz	Y1	3-4
1695–2690 MHz	Y2	5-6
1695–2690 MHz	Y3	7-8
1695–2690 MHz	Y4	9-10
3300-3800 MHz	P1	1xMQ5, 1xMQ4

MQ4/MQ5 Port Mapping

Connector	Pin	Frequency	Polarization/Port
MQ5	1	3300-3800 MHz	+45
	2	3300-3800 MHz	+45
	3	3300-3800 MHz	+45
	4	3300-3800 MHz	+45
	5	3300-3800 MHz	Calibration port
MQ4	1	3300-3800 MHz	-45
	2	3300-3800 MHz	-45
	3	3300-3800 MHz	-45
	4	3300-3800 MHz	-45

