

**X Pol Panel TD Antenna 4400-5000MHz 90° 14.5dBi 2°-12° Replaceable RET**

General parameters	Frequency Range (MHz):	4400-5000
	Electrical Downtilt (°):	2-12
	Electrical Downtilt Accuracy(°):	±1.5
	Lightning Protection:	DC Grounded
Calibration and electrical parameters	Coupling Factor Between Calibration Port And Each Antenna Port (dB):	-26±2
	Max Amp (dB):	≤1.0
	Phase Deviation (°):	≤12
	VSWR:	≤1.5
	Average Power Per Port (W):	≥80
	Co-polarization isolation between ports (dB) :	≥20
	Cross-polarization isolation between ports (dB) :	≥23
Connector Type:	9x4.3-10 Female	

Radiation parameters	Frequency range (MHz):		4400-5000
	Single Column	Horizontal 3dB beamwidth (°):	90±10
		Vertical 3dB beamwidth (°):	≥5.5
		Gain (dBi):	14.2±1.0
		Cross Polar Ratio 0° (dB):	≥15
		Cross Polar Ratio ±60° (dB):	≥8
		Front to Back Ratio (dB):	≥23
		Upper Sidelobe Suppression (dB):	14
	Broadcast Beam	Horizontal 3dB beamwidth (°):	65±10
		Gain (dBi):	15.7±0.5
		Vertical 3dB Beamwidth (°):	≥5.5
		Front to Back Ratio (dB):	≥25
		Upper Sidelobe Suppression (dB):	14
	Service Beam @ 0deg	Gain (dBi):	19.2±0.5
		Horizontal 3dB beamwidth (°):	25
		Horizontal Sidelobe Level(dB):	≤-12
		Cross Polar Ratio 0° (dB):	≥15
		Front to Back Ratio (dB):	≥25

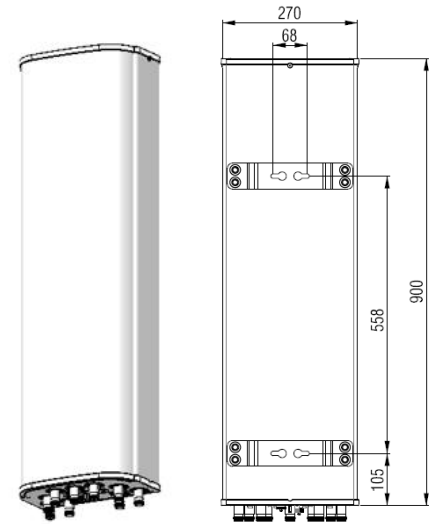
**BASTA Electrical Specifications**

Frequency Range(MHz):		4400-5000(P1)
Average Gain by all Beam Tilts (dBi):		14.76
Gain by all Beam Tilts Tolerance(dB):		±1.0
Average Gain by Beam Tilt (dBi):	2°	14.73
	7°	14.97
	12°	14.60
Horizontal Beamwidth Tolerance(°):		±9.5
Vertical Beamwidth Tolerance(°):		±0.6
Upper Side Lobe Suppression (dB):		15.1
Front to back Ratio at 180° ± 30°(dB)		26.0
CPR at Boresight(dB):		15.0

# S-NPX0410P-2C

## Mechanical Data

Antenna Dimensions (mm):	900×270×149
Packing Dimensions (mm):	1125×355×235
Antenna Net Weight/Bracket (kg):	9.3 / 3.65
Antenna Gross Weight (kg):	14.9
Radome Material:	Fiberglass
Pipe OD (mm):	50-115
Mounting Kits (Included):	BA.K.04.00069501, Adjustable Downtilt 0-30°



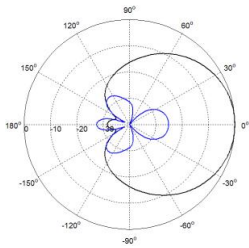
## Environmental Ratings

Humidity:	95%RH@+30°C
Temperature (°C):	-40~+60
Wind Load @150 km/h (N):	Frontal/Lateral/Rearside:204/85/379
Max. Wind velocity(km/h) :	200

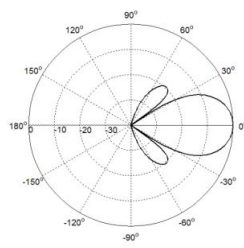
## Internal RET Specifications

RET Type:	Replaceable RET
RET protocol:	AISG 2.0 /3 GPP
Input voltage range(V):	10-30 DC
Power consumption(W):	< 5 (motor activated ,single RET) < 1 (stand by, single RET), < 1.5 (stand by, 12V)
Adjustment time (full range) (s):	< 120 (typically, depending on antenna type)
RET connector:	1 pair of AISG 5 pin male & female
Pin assignment according AISG:	8 pin circular connector conforming to IEC 60130-9 - Ed. 3.0
Lightning protection (kA):	5 (8/20 μs Differential mode), 8 (8/20 μs Common mode)

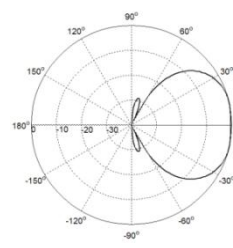
## Typical Patterns



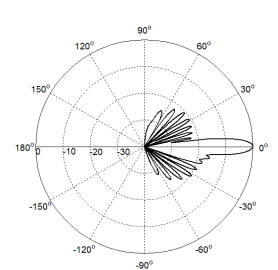
Single Column



Service Beam @0deg



Broadcast Beam



Elevation

**Bottom View**



**Correlation Table**

Frequency Range	Array	Connector	RET S/N
4400-5000MHz	P1	1-8	BRxxx.....1P1

