

LVPX203F0

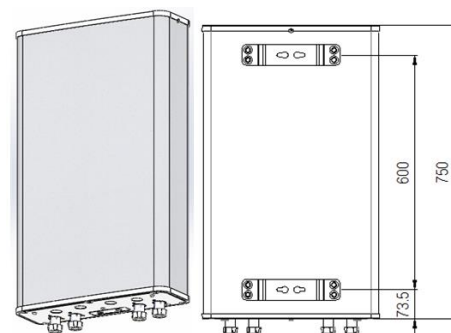
XX Pol Panel Antenna 1710-2700/3300-3800MHz 25° 15dBi 0° FET

Electrical Specifications

Frequency Range (MHz):	1710-2700(Y1)	3300-3800(P1)
Gain (dBi):	15±0.5	15±0.5
Return Loss (dB):	>14(VSWR<1.5)	
Polarization (°):	±45	
Horizontal 3dB Beamwidth (°):	25±6	25±6
Vertical 3dB Beamwidth (°):	25±6	25±6
Electrical Downtilt (°):	0	
1 st Upper Sidelobe Suppression (dB):	>20	>20
Front to Back Ratio (dB):	>25	>25
Cross Polar Ratio 0° (dB):	>20	>20
Isolation Port to Port (dB):	>25	
Intermodulation IM3 (dBc):	<-150 (2×43 dBm)	
Max. Power Per Port (W):	150	
Impedance (ohm):	50	
Lightning Protection:	DC Grounded	
Connector Type:	4×7/16 DIN Female	

Mechanical Data

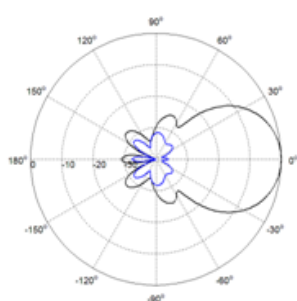
Antenna Dimensions (mm):	750×448×145
Packing Dimensions (mm):	1070×515×220
Antenna Net Weight/Bracket (kg):	10/5.7
Antenna Gross Weight (kg):	17.5
Radome Material:	Fiberglass
Pipe OD (mm):	70-114
Mounting Kits (Included):	BA.K.04.00011, Adjustable Downtilt 0°-20°



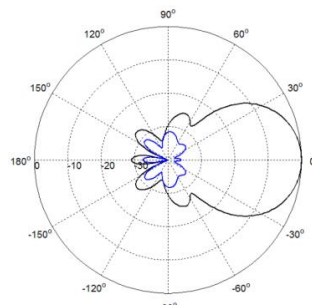
Environmental Ratings

Humidity:	95%RH@+30 °C
Temperature (°C):	-40~+70
Wind Load @150 km/h (N):	Frontal/Lateral/Rearside: 435/57/483
Max. Wind velocity (km/h)	200

Typical Patterns



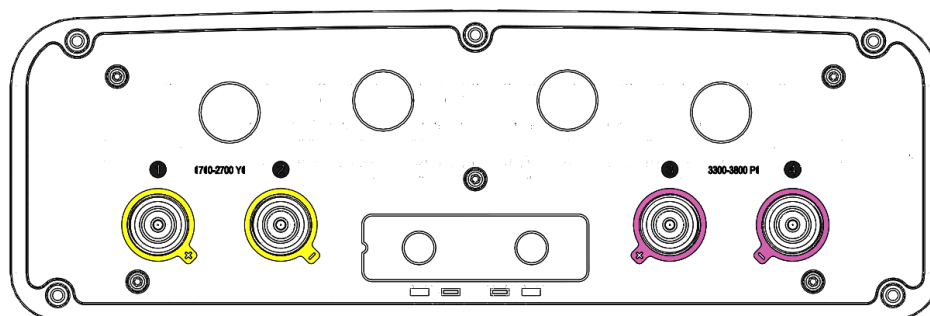
Azimuth



Elevation

LVPX203F0

Bottom View



Correlation Table

Frequency range	Array	Connector
1710-2700MHz	Y1	1-2
3300-3800MHz	P1	3-4

