

X Pol Panel Antenna 1710-2690MHz 65° 18dBi 0°-10° RET**Electrical Specifications**

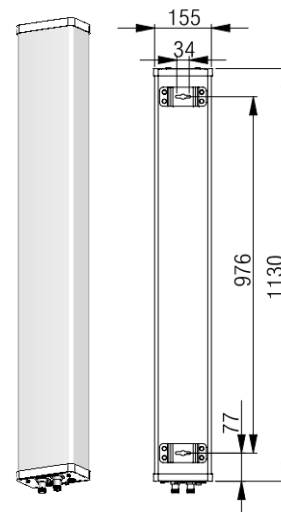
Frequency Range (MHz):	1710-2690(Y1)		
	1710-2170	2200-2490	2490-2690
Gain (dBi):	16.8±0.5	17.2±0.5	17.5±0.5
Return Loss (dB):	>14 (VSWR<1.5)		
Polarization:	±45°		
Horizontal 3dB Beamwidth (°):	68	65	58
Vertical 3dB Beamwidth (°):	7.8	6.5	5.5
Electrical Downtilt (°):	0-10 Independently Continuously Adjustable		
RET Type:	RET Cascade SRET, AISG 2.0, Upgradeable		
1 st Upper Sidelobe Suppression(dB):	16	16	16
Front to Back Ratio (dB):	>25		
Cross Polar Ratio 0° (dB):	15	15	15
Cross Polar Ratio ±60° (dB):	10	9	8
Isolation Port to Port (dB):	>28		
Max. Power Per Port (W):	250		
Intermodulation IM3 (dBc):	<-150(2×43 dBm)		
Impedance (ohm):	50		
Lightning Protection:	DC Grounded		
Connector Type:	2×4.3-10 Female		

BASTA Electrical Specifications

Frequency Range(MHz):	1710-2690		
	1710-2170	2200-2490	2490-2690
Average Gain by all Beam Tilts (dBi):	16.64	16.93	17.23
Gain by all Beam Tilts Tolerance(dB):	±0.43	±0.35	±0.41
Average Gain by Beam Tilt (dBi):	0° 16.85 5° 16.66 10° 16.42	0° 17.25 5° 16.96 10° 16.73	0° 17.45 5° 17.20 10° 17.03
Horizontal Beamwidth Tolerance(°):	±4.77	±2.94	±2.53
Vertical Beamwidth Tolerance(°):	±0.82	±0.42	±0.38
1st Upper Sidelobe Suppression (dB) :	17.56	17.62	16.86
Front to back	27.84	27.18	26.84
Total Power at 180° ± 30°(dB):	24.29	23.09	22.86
CPR at Boresight(dB):	24.29	23.09	22.86

Mechanical Data

Antenna Dimensions (mm):	1130×155×90
Packing Dimensions (mm):	1475×240×185
Antenna Net Weight/Bracket (kg):	5.5/1.5
Antenna Gross Weight (kg):	9
Radome Material:	Fiberglass
Pipe OD (mm):	70-114
Mounting Kits (Included):	BA.K.04.00013, Adjustable Downtilt 0°-15°



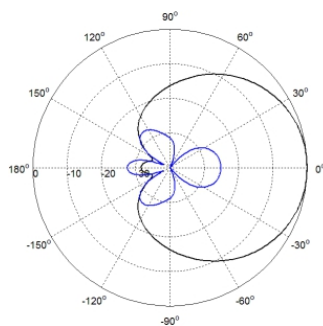
Environmental Ratings

Humidity:	95%RH@+30℃
Temperature (℃):	-40~+70
Max. Wind velocity(km/h):	Frontal/ Lateral/Rearside: 249/98/256 200

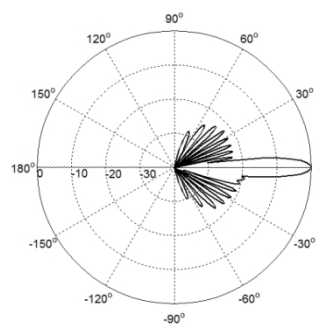
Internal RET Specifications

RET type:	Integrated RET
RET protocol:	AISG2.0 /3GPP
Input voltage range(V):	10-30 DC
Power consumption(W):	< 5 (motor activated , single RET) < 1 (stand by, single RET), < 1.5 (stand by, 12V)
Adjustment time (full range): (s):	< 120 (typically, depending on antenna type)
RET connector:	1 pair of AISG 8 pin male & female per sector
Pin assignment according AISG:	8 pin circular connector conforming to IEC 60130-9 - Ed. 3.0
Lightning protection (kA):	5 (8/20 μs Differential mode), 8 (8/20 μs Common mode)

Typical Patterns



Azimuth

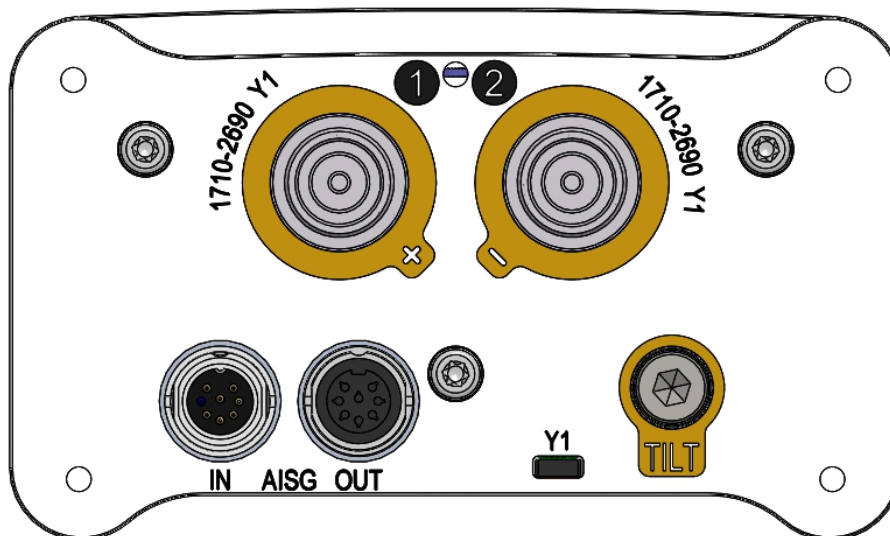


Elevation



LPX310R-C

Bottom View



Correlation Table

Frequency range	Array	Connector	RET S/N
1710-2690MHz	Y1	1-2	BRXXX.....1Y1

