

X Pol Panel Antenna 1710-2690MHz 65° 16dBi 2°-12° RET**Electrical Specifications**

Frequency Range (MHz):	1710-2690(Y1)		
	1710-2170	2300-2490	2490-2690
Gain (dBi):	14.6±0.5	15.0±0.5	15.3±0.5
Return Loss (dB):	>14 (VSWR<1.5)		
Polarization(°):	±45°		
Horizontal 3dB Beamwidth (°):	69	63	58
Vertical 3dB Beamwidth (°):	14.5	11.0	10.0
Electrical Downtilt (°):	2-12 Independently Continuously Adjustable		
RET Type:	RET Cascade SRET, AISG 2.0, Upgradeable		
1 st Upper Sidelobe Suppression (dB):	15	15	15
Front to Back Ratio (dB):	>25	>25	>25
Cross Polar Ratio 0° (dB):	15	15	15
Cross Polar Ratio ±60° (dB):	>10	>8	>6
Isolation Port to Port(dB):	>25		
Max. Power Per Port (W):	200		
Intermodulation IM3 (dBC):	<-150 (2×43dBm)		
Impedance (ohm):	50		
Lightning Protection:	DC Grounded		
Connector Type:	2×4.3-10 Female		

BASTA Electrical Specifications

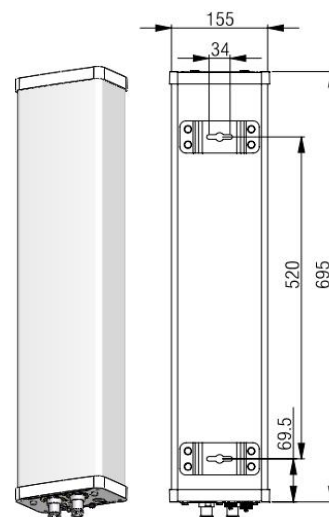
Frequency Range(MHz):	1710-2690(Y1)		
	1710-2170	2300-2490	2490-2690
Average Gain by Beam Tilts (dBi):	2° 15.21	2° 15.38	2° 15.32
	7° 14.90	7° 15.01	7° 14.98
	12° 14.62	12° 14.70	12° 14.68
Gain by all Beam Tilts Tolerance(dB):	±0.53	±0.60	±0.66
Horizontal BeamwidthTolerance(°):	±4.68	±2.08	±3.53
Vertical Beamwidth Tolerance(°):	±1.93	±0.99	±0.42
Upper Side Lobe Suppression, Peak to 20°(dB):	15.38	15.97	16.01
Front to back Total Power at 180° ± 30°(dB)	25.27	26.42	26.59
CPR at Boresight(dB):	18.96	17.77	18.52

Mechanical Data

Antenna Dimensions (mm):	695×155×90
Packing Dimensions (mm):	1040×240×185
Antenna Net Weight/Bracket (kg):	4/1.5
Antenna Gross Weight (kg):	7.5
Radome Material:	Fiberglass
Pipe OD (mm):	70-114
Mounting Kits (Included):	BA.K.04.00013, Adjustable Downtilt 0°-15°

Environmental Ratings

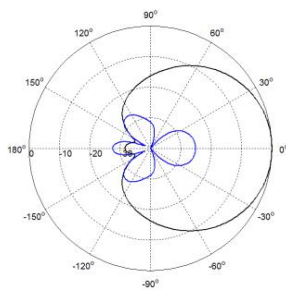
Humidity:	95%RH@+30°C
Temperature (°C):	-40~+70
Wind Load @150 km/h (N):	Frontal/Lateral/Rearside:150/58/154
Max.Wind velocity(km/h):	200



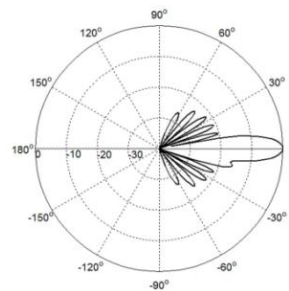
Internal RET Specifications

RET Type:	Integrated RET
RET protocol:	AISG2.0 /3GPP
Input voltage range(V):	10-30 DC
Power consumption(W):	< 5 (motor activated, single RET) < 1 (stand by, single RET), < 1.5 (stand by, 12V)
Adjustment time (full range) (s):	< 120 (typically, depending on antenna type)
RET connector:	1 pair of AISG 8 pin male & female per sector
Pin assignment according AISG:	8pin circular connector conforming to IEC 60130-9 - Ed. 3.0
Lightning protection (kA):	5 (8/20 μs Differential mode), 8 (8/20 μs Common mode)

Typical Patterns

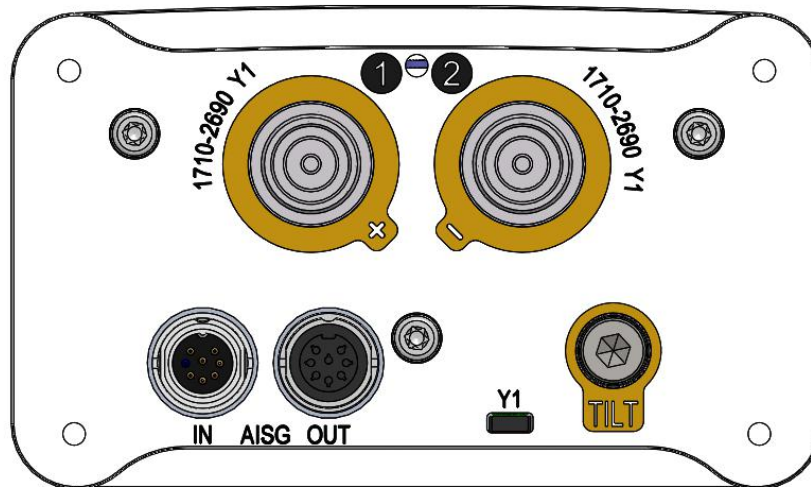


Azimuth



Elevation

Bottom View



Correlation Table

Frequency range	Array	Connector	RET S/N
1710–2690 MHz	Y1	1-2	BRxxx.....1Y1

