

XX Pol Panel Antenna 2×1710-2690MHz 65° 19dBi 0°-8° Replaceable RET**Electrical Specifications**

Frequency Range (MHz):	2×1710-2690(Y1,Y2)		
	1710-2170	2300-2490	2490-2690
Gain (dBi):	17.8±0.5	18.7±0.5	19.0±0.5
Return Loss (dB):	>14 (VSWR<1.5)		
Polarization:	±45°		
Horizontal 3dB Beamwidth (°):	68	63	58
Vertical 3dB Beamwidth (°):	6.0	5.2	4.5
Electrical Downtilt (°):	0°-8° Independently Continuously Adjustable		
RET Type:	RET Cascade SRET, AISG 2.0, Upgradeable		
1 st Upper Sidelobe Suppression (dB):	15	15	15
Front to Back Ratio (dB):	>25	>25	>25
Cross Polar Ratio 0° (dB):	15	15	15
Cross Polar Ratio ±60° (dB):	10	9	8
Isolation Port to Port(dB):	>28		
Max. Power Per Port (W):	200		
Intermodulation IM3 (dBC):	<-150 (2×43dBm)		
Impedance (ohm):	50		
Lightning Protection:	DC Grounded		
Connector Type:	4×4.3-10 Female		

BASTA Electrical Specifications

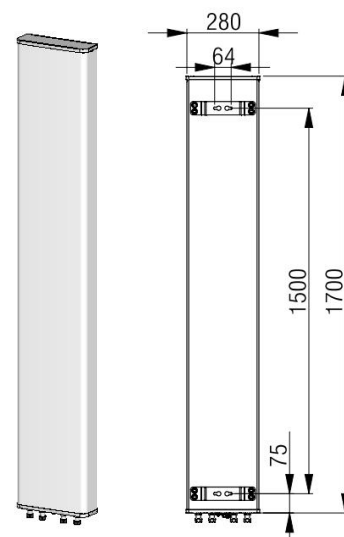
Frequency Range(MHz):	1710-2690(Y1,Y2)		
	1710-2170	2300-2490	2490-2690
Average Gain by Beam Tilts (dBi):	0° 18.16	0° 18.41	0° 18.55
	4° 18.03	4° 18.26	4° 18.39
	8° 17.91	8° 18.08	8° 18.11
Gain by all Beam Tilts Tolerance(dB):	±0.33	±0.45	±0.50
Horizontal BeamwidthTolerance(°):	±2.76	±3.69	±4.08
Vertical Beamwidth Tolerance(°):	±0.54	±0.49	±0.34
Upper Side Lobe Suppression, Peak to 20°(dB):	15.11	15.09	15.32
Front to back Total Power at 180° ± 30°(dB)	25.70	30.66	28.96
CPR at Boresight(dB):	22.48	21.40	17.43

Mechanical Data

Antenna Dimensions (mm):	1700×280×90
Packing Dimensions (mm):	2015×345×165
Antenna Net Weight/Bracket (kg):	15.5/3.65
Antenna Gross Weight (kg):	23
Radome Material:	Fiberglass
Pipe OD (mm):	50-115
Mounting Kits (Included):	BA.K.04.00069411, Adjustable Downtilt 0°-12°

Environmental Ratings

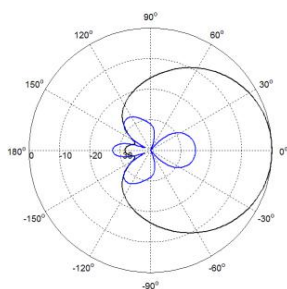
Humidity:	95%RH@+30°C
Temperature (°C):	-40~+70
Wind Load @150 km/h (N):	Frontal/Lateral/Rearside: 830/121/945
Max.Wind velocity(km/h):	200



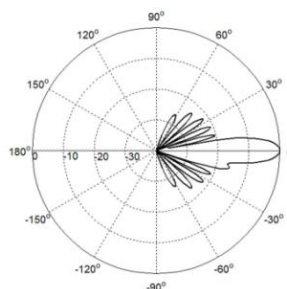
Internal RET Specifications

RET type:	Replaceable RET
RET protocol:	AISG2.0 /3GPP
Input voltage range(V):	10-30 DC
Power consumption(W):	< 5 (motor activated, single RET) < 1 (standby, single RET), < 1.5 (standby, 12V)
Adjustment time (full range) (s):(s):	< 120 (typically, depending on antenna type)
RET connector:	1 pair of AISG 5 pin male & female
Pin assignment according AISG:	8pin circular connector conforming to IEC 60130-9 - Ed. 3.0
Lightning protection (kA):	5 (8/20 μs Differential mode), 8 (8/20 μs Common mode)

Typical Patterns



Azimuth



Elevation

Correlation Table

Frequency range	Array	Connector
1710–2690 MHz	Y1	1-2
1710–2690 MHz	Y2	3-4

