

XX Pol Panel Antenna 2×1710-2690MHz 33° 19dBi 0°-10°Replaceable RET**Electrical Specifications**

| Frequency Range (MHz): | 1710-2690(Y1,Y2) | | | | |
|--|--|-----------|-----------|-----------|-----------|
| | 1710-1880 | 1880-2025 | 2025-2170 | 2300-2500 | 2500-2690 |
| Gain (dBi): | 17.6±0.5 | 18.0±0.5 | 18.5±0.5 | 18.2±0.5 | 18.0±0.5 |
| Return Loss (dB): | >14 (VSWR<1.5) | | | | |
| Polarization: | ±45° | | | | |
| Horizontal 3dB beamwidth (°): | 38 | 35 | 32 | 30 | 28 |
| Vertical 3dB beamwidth (°): | 9.5 | 9.0 | 8.5 | 8.0 | 7.5 |
| Electrical Downtilt (°): | 0°-10° Independently Continuously Adjustable | | | | |
| RET Type: | RET Cascade SRET, AISG 2.0, Upgradeable | | | | |
| 1 st Upper Sidelobe Suppression (dB): | 15 | | | | |
| Front to Back Ratio (dB): | 25 | | | | |
| Cross Polar Ratio 0°(dB) : | 15 | | | | |
| Cross Polar Ratio ±15°(dB) : | 10 | | | | |
| Isolation Port to Port (dB): | 28 | | | | |
| Max. Power Per Port (W): | 200 | | | | |
| Intermodulation IM3 (dBc): | <-150 (2×43 dBm) | | | | |
| Impedance (ohm): | 50 | | | | |
| Lightning Protection: | DC Grounded | | | | |
| Connector Type: | 4×4.3-10 Female | | | | |

BASTA Electrical Specifications

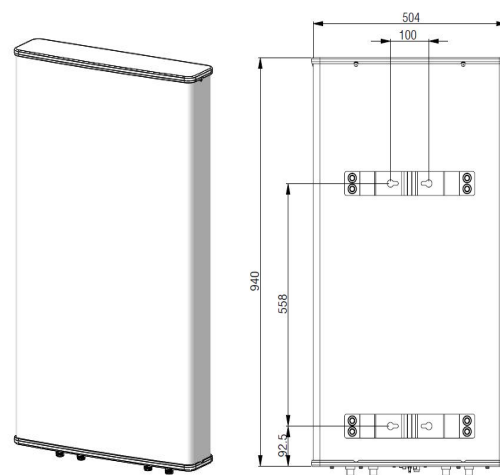
| Frequency Range(MHz): | 1710-2690(Y1,Y2) | | | | |
|---|------------------|-----------|-----------|-----------|-----------|
| | 1710-1880 | 1880-2025 | 2025-2170 | 2300-2500 | 2500-2690 |
| Average Gain by Beam Tilts (dBi): | 0° 18.08 | 0° 18.23 | 0° 18.29 | 0° 18.30 | 0° 17.88 |
| | 5° 18.00 | 5° 18.06 | 5° 18.18 | 5° 18.13 | 5° 17.73 |
| | 10° 17.68 | 10° 17.76 | 10° 17.82 | 10° 17.70 | 10° 17.70 |
| Gain by all Beam Tilts Tolerance(dB): | ±0.32 | ±0.41 | ±0.40 | ±0.33 | ±0.53 |
| Horizontal Beamwidth Tolerance(°): | ±3.84 | ±1.16 | ±0.97 | ±0.76 | ±0.55 |
| Vertical Beamwidth Tolerance(°): | ±0.92 | ±0.37 | ±0.42 | ±0.26 | ±0.27 |
| Upper Side Lobe Suppression, Peak to 20°(dB): | 15.11 | 17.24 | 16.36 | 17.62 | 15.43 |
| Front to back Total Power at 180° ± 30°(dB) | 25.07 | 31.03 | 26.74 | 27.66 | 27.02 |
| CPR at Boresight(dB): | 16.61 | 19.44 | 18.67 | 19.05 | 18.88 |

Mechanical Data

| | |
|----------------------------------|---|
| Antenna Dimensions (mm): | 940×504×118 |
| Packing Dimensions (mm): | 1210×590×215 |
| Antenna Net Weight/Bracket (kg): | 16 / 5.9 |
| Antenna Gross Weight (kg): | 24.5 |
| Radome Material: | Fiberglass |
| Pipe OD (mm): | 50-114 |
| Mounting Kits (Included): | BA.K.04.00069161, Adjustable Downtilt 0°-30° |

Environmental Ratings

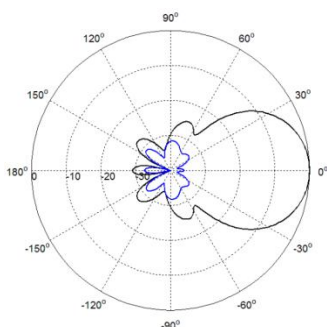
| | |
|---------------------------|--------------------------------------|
| Humidity: | 95%RH@+30℃ |
| Temperature (℃): | -40~+70 |
| Wind Load @150 km/h (N): | Frontal/Lateral/Rearside: 773/64/817 |
| Max. Wind velocity(km/h): | 200 |



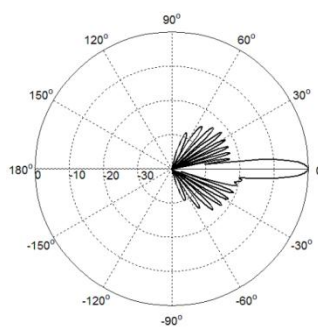
Internal RET Specifications

| | |
|--------------------------------|--|
| RET type: | Replaceable RET |
| RET protocol: | AISG 2.0 /3 GPP |
| Input voltage range (V): | 10-30 DC |
| Power consumption (W): | < 5 (motor activated, single RET) < 1 (stand by, single RET), < 1.5 (stand by, 12V) |
| Adjustment time (full range): | < 120 (typically, depending on antenna type) |
| RET connector: | 1 pair of AISG 5 pin male & female |
| Pin assignment according AISG: | 8 pin circular connector conforming to IEC 60130-9 - Ed. 3.0 |
| Lightning protection (kA): | 5 (8/20 μ s Differential mode), 8 (8/20 μ s Common mode) |

Typical Patterns

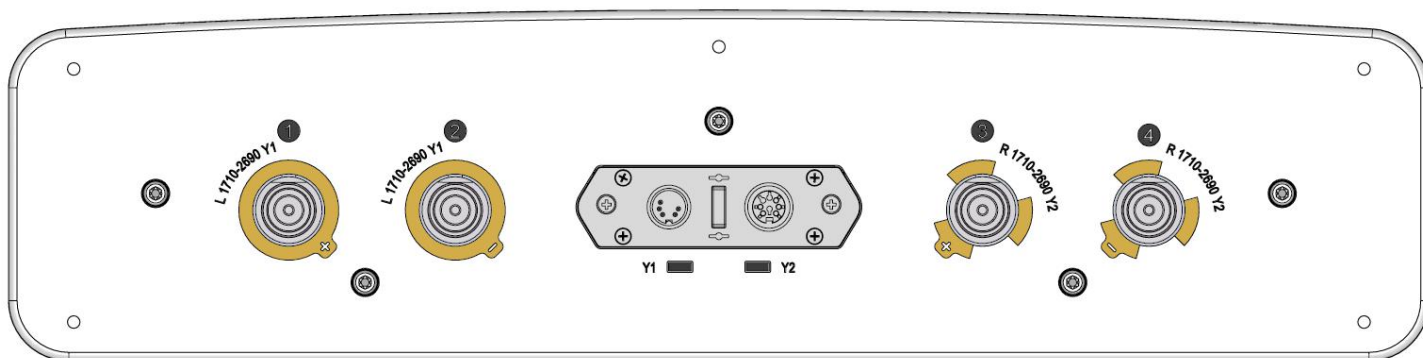


Azimuth



Elevation

Bottom View



Correlation Table

| Frequency range | Array | Connector | RET S/N |
|-----------------|-------|-----------|---------------|
| 1710–2690 MHz | Y1 | 1-2 | BRxxx.....1Y1 |
| 1710–2690 MHz | Y2 | 3-4 | BRxxx.....2Y2 |

