

XXXXXX Pol Tube Antenna 6×1710-2690MHz 65°14.5dBi 2°-12° RET**Electrical Specifications**

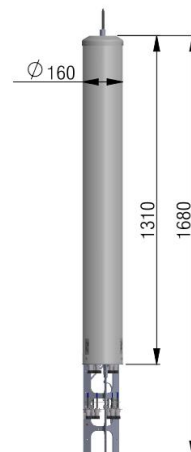
Frequency Range (MHz):		1710-2690(Y1,Y2,Y3,Y4,Y5,Y6)		
		1710-2170	2300-2490	2490-2690
Gain (dBi):	Top	13.4±0.5	13.8±0.5	14.0±0.5
	Bottom	13.5±0.5	14.0±0.5	14.3±0.5
Return Loss (dB):		>14 (VSWR<1.5)		
Polarization:		±45°		
Horizontal 3dB Beamwidth (°):		68	65	68
Vertical 3dB Beamwidth (°):		16	13	12
Electrical Downtilt (°):		2-12 Independently Continuously Adjustable, Two Systems per Sector Controlled by the Same Motor.		
RET Type:		RET Cascade SRET, AISG 2.0, Upgradeable		
1 st Upper Sidelobe Suppression (dB):		15	15	15
Front to Back Ratio (dB):		>22	>23	>23
Cross Polar Ratio 0° (dB):		>15	>15	>15
Cross Polar Ratio ±60° (dB):		>8	>8	>8
Isolation Port to Port (dB):		>25		
Max. Power Per Port (W):		200		
Intermodulation IM3 (dBc):		<-150(2×43 dBm)		
Impedance (ohm):		50		
Lightning Protection:		DC Grounded		
Connector Type:		12×4.3-10Female		

BASTA Electrical Specifications

Frequency Range(MHz):		1710-2690(Y1,Y2,Y3,Y4,Y5,Y6)		
		1710-2170	2300-2490	2490-2690
Average Gain by all Beam Tilts (dBi):		13.9	14.1	14.3
Gain by all Beam Tilts Tolerance(dB):		±0.45	±0.59	±0.56
Average Gain by Beam Tilt (dBi):	2°	13.7	14.1	14.5
	7°	13.3	14.0	14.3
	12°	13.2	13.8	14.1
Horizontal Beamwidth Tolerance(°):		±5.16	±4.30	±4.43
Vertical Beamwidth Tolerance(°):		±1.32	±0.61	±1.05
USLS beampeak to 20° above beampeak(dB):		15.81	17.65	17.72
Front to back Total Power at 180° ± 30°(dB):		29.84	28.55	29.12
CPR at Boresight(dB):		22.17	25.03	20.81

Mechanical Data

Antenna Dimensions (mm):	Φ160(Diameter)×1680(Length)
Packing Dimensions (mm):	1835(Length)×265(Width)×270(Height)
Antenna Net Weight (kg):	18
Antenna Gross Weight (kg):	21
Radome Material:	Fiberglass
Mounting Kits (Included):	Flange Mounted

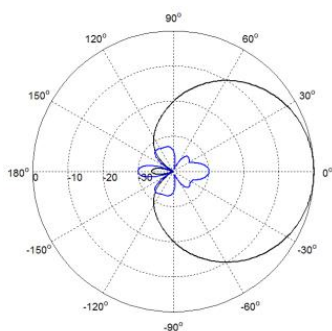
**Environmental Ratings**

Humidity:	95%RH@+30°C
Temperature (°C):	-40~+70
Wind Load @150 km/h (N):	228
Max. Wind velocity(km/h):	200

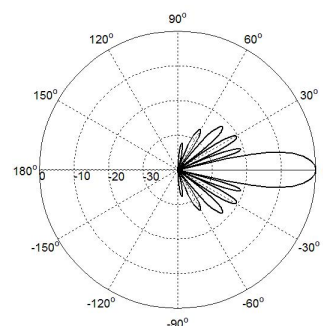
Internal RET Specifications

RET Type:	Integrated RET
RET Protocol:	AISG2.0 /3GPP
Input voltage range(V):	10-30 DC
Power consumption(W):	< 5 (motor activated , single RET) < 1 (stand by, single RET), < 1.5 (stand by, 12V)
Adjustment time (full range) (s):	< 120 (typically, depending on antenna type)
RET connector:	1 pair of AISG 8 pin male & female
AISG Pin assignment according AISG:	8pin circular connector conforming to IEC 60130-9 - Ed. 3.0
Lightning protection (kA):	5 (8/20 μ s Differential mode), 8 (8/20 μ s Common mode)

Typical Patterns

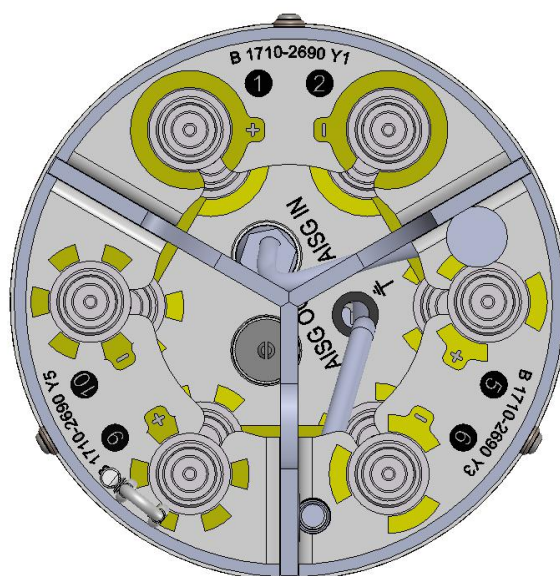


Azimuth

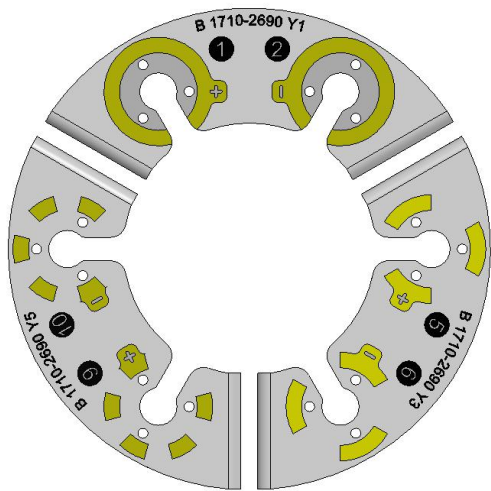


Elevation

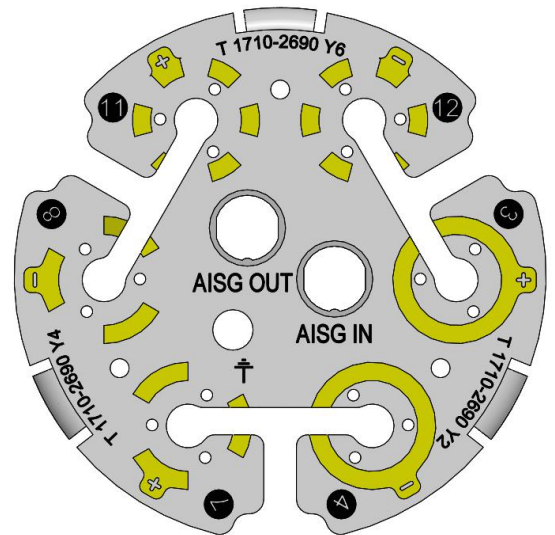
Bottom View



view of all layers



Bottom layer



Top layer

Correlation Table

Frequency range	Array	Sector	Connector	RET S/N
1710–2690 MHz	Y1/Y2	1	1-2/3-4	BRxxx.....Y1Y2
1710–2690 MHz	Y3/Y4	2	5-6/7-8	BRxxx.....Y3Y4
1710–2690 MHz	Y5/Y6	3	9-10/11-12	BRxxx.....Y5Y6

