

**6X Pol Panel Hexa-Beam Antenna 6×1695-2690MHz 8° 23dBi 6° FET****Electrical Specifications**

Frequency Range (MHz):	Beam 1 (Port 1/2)					
	1695-1880	1880-2025	2025-2300	2300-245	2450-255	2550-2690
Gain (dBi):	18.7±1.7	20.0±0.6	20.8±0.6	21.4±0.6	21.3±0.6	21.0±0.4
Horizontal 3dB Beamwidth (°):	13.2±2.2	11.6±1.2	9.8±1.1	8.4±1.0	8.1±0.6	7.4±0.4
Vertical 3dB Beamwidth (°):	14.0±1.3	13.5±2.7	12.1±1.0	10.7±0.7	10.0±1.6	9.9±0.5
Horizontal Beam Pointing (°):	46	42	37	33	31	29
Electrical Downtilt (°):	6.0 Fixed					
1 <sup>st</sup> Upper Sidelobe Suppression (dB):	20	19	18	17	16	18
Front to Back Ratio (dB):	28	28	28	28	28	28
CPR at boresight (dB):	15					

Frequency Range (MHz):	Beam 2 (Port 3/4)					
	1695-1880	1880-2025	2025-2300	2300-245	2450-255	2550-2690
Gain (dBi):	20.5±0.7	21.2±0.4	21.5±0.6	21.5±0.4	21.5±0.8	21.6±0.4
Horizontal 3dB Beamwidth (°):	10.3±1.0	9.4±0.6	8.4±1.0	7.5±0.5	7.4±0.7	6.9±0.3
Vertical 3dB Beamwidth (°):	14.3±1.0	13.4±0.9	12.0±0.8	10.8±1.0	10.3±0.5	9.8±0.5
Horizontal Beam Pointing (°):	26	24	21	19	18	17
Electrical Downtilt (°):	6.0 Fixed					
1 <sup>st</sup> Upper Sidelobe Suppression (dB):	19	19	18	17	17	16
Front to Back Ratio (dB):	28	28	28	28	28	28
CPR at Boresight (dB):	15					

Frequency Range (MHz):	Beam 3 (Port 5/6)					
	1695-1880	1880-2025	2025-2300	2300-2450	2450-255	2550-2690
Gain (dBi):	21.0±0.4	21.1±0.4	21.5±0.6	21.6±0.4	21.6±0.5	21.8±0.4
Horizontal 3dB Beamwidth (°):	9.5±0.9	8.7±0.7	7.9±0.3	7.2±1.0	6.9±0.3	6.6±0.6
Vertical 3dB Beamwidth (°):	14.6±1.4	13.6±1.0	12.1±0.5	11.0±0.7	10.4±0.6	9.8±0.6
Horizontal Beam Pointing (°):	8	7	6	6	5	5
Electrical Downtilt (°):	6.0 Fixed					
1 <sup>st</sup> Upper Sidelobe Suppression (dB):	19	18	18	17	17	17
Front to Back Ratio (dB):	28	28	28	28	28	28
CPR at Boresight (dB):	15					

Frequency Range (MHz):	Beam 4 (Port 7/8)					
	1695-1880	1880-2025	2025-2300	2300-2450	2450-255	2550-2690
Gain (dBi):	21.0±0.4	21.1±0.4	21.5±0.6	21.6±0.4	21.6±0.5	21.8±0.4
Horizontal 3dB Beamwidth (°):	9.4±0.9	8.7±0.6	7.9±0.3	7.2±0.6	6.9±0.2	6.6±0.6
Vertical 3dB Beamwidth (°):	14.7±1.1	13.6±1.0	12.1±0.9	10.9±0.5	10.3±0.8	9.7±0.6
Horizontal Beam Pointing (°):	-8	-7	-6	-6	-5	-5
Electrical Downtilt (°):	6.0 Fixed					
1 <sup>st</sup> Upper Sidelobe Suppression (dB):	19	19	18	18	17	15
Front to Back Ratio (dB):	28	28	28	28	28	28
CPR at Boresight (dB):	15					

Frequency Range (MHz):	Beam 5 (Port9/10)					
	1695-1880	1880-2025	2025-2300	2300-2450	2450-255	2550-2690
Gain (dBi):	20.5±0.7	21.2±0.4	21.5±0.6	21.5±0.4	21.5±0.8	21.6±0.4
Horizontal 3dB Beamwidth (°):	10.2±0.8	9.3±0.8	8.4±0.7	7.5±0.7	7.3±0.2	6.9±0.6
Vertical 3dB Beamwidth (°):	14.8±1.4	13.9±0.8	12.3±1.1	10.9±0.7	10.5±0.5	9.8±1.1
Horizontal Beam Pointing (°):	-26	-24	-21	-19	-18	-17
Electrical Downtilt (°):	6.0 Fixed					
1 <sup>st</sup> Upper Sidelobe Suppression (dB):	19	19	18	17	17	16
Front to Back Ratio (dB):	28	28	28	28	28	28
CPR at Boresight (dB):	15					

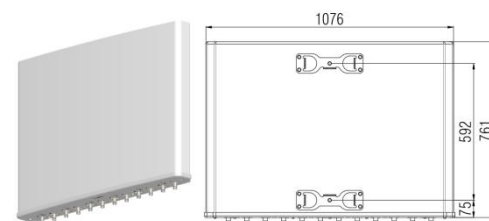
Frequency Range (MHz):	Beam 6 (Port11/12)					
	1695-1880	1880-2025	2025-2300	2300-2450	2450-255	2550-2690
Gain (dBi):	18.7±1.9	19.8±0.6	21.0±0.5	21.0±0.5	21.5±0.7	21.2±0.4
Horizontal 3dB Beamwidth (°):	13.4±2.7	11.7±1.1	9.8±1.4	8.4±1.0	8.1±0.8	7.5±0.4
Vertical 3dB Beamwidth (°):	14.1±1.2	13.7±2.3	12.2±0.9	10.8±1.1	10.1±1.5	9.9±0.6
Horizontal Beam Pointing (°):	-46	-42	-37	-33	-31	-29
Electrical Downtilt (°):	6.0 Fixed					
1 <sup>st</sup> Upper Sidelobe Suppression (dB):	15	16	17	15	15	16
Front to Back Ratio (dB):	28	28	28	28	28	28
CPR at Boresight (dB):	15					

### Electrical Specifications

Frequency Range (MHz):	All Beams (Port 1 to 12)
	1695-2690
Return Loss (dB):	>14 (VSWR<1.5)
Polarization:	±45°
Cross Polar Isolation (dB):	>25
Beam to beam Isolation(dB):	>16
Max. Power Per Port (W):	200
Total Power for the Antenna(W):	800
Intermodulation IM3 (dBc):	<-150 (2×43 dBm)
Impedance (ohm):	50
Lightning Protection:	DC Grounded
Connector Type:	12×4.3-10 Female

### Mechanical Data

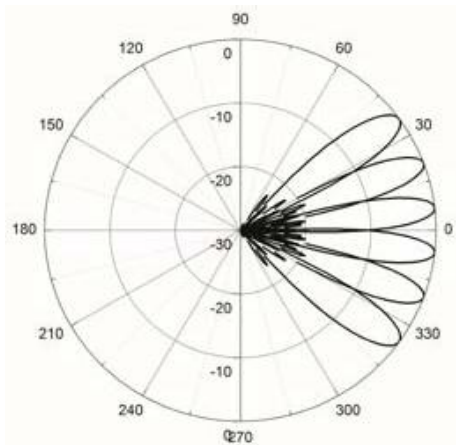
Antenna Dimensions (mm):	761×1076×136
Packing Dimensions (mm):	909×1199×237
Antenna Net Weight/Bracket (kg):	26 /5.8
Antenna Gross Weight (kg):	38
Radome Material:	Fiberglass
Pipe OD (mm):	70-114
Mounting Kits (Included):	BA.K.04.00055, Adjustable Downtilt 0°-10°



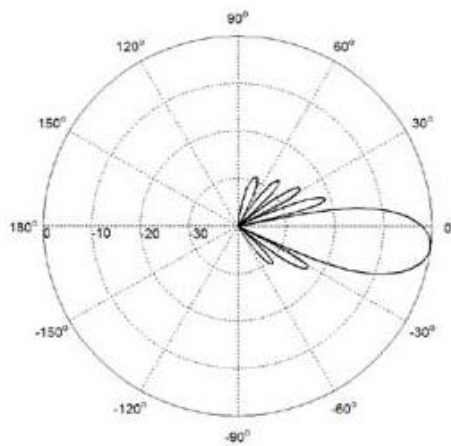
## Environmental Ratings

Humidity:	95%RH@+30°C
Temperature (°C):	-40~+70
Wind Load @ 150 km/h (N):	Frontal/Lateral/Rearside:974/36/999
Max. Wind velocity(km/h):	200

## Typical Patterns



Azimuth



Elevation

## Bottom View

