

**XXXXX Pol Panel Penta Beam Antenna 5×694-960MHz 14° 21 dBi 6° FET****Electrical Specifications**

Frequency Range (MHz):	Beam 3 (Port 5/6, Middle)		
	694-790	790-880	880-960
Gain (dBi):	19.8±0.5	20.5±0.5	21.1±0.5
Horizontal 3dB beamwidth (°):	15.5	14.0	12.6
Horizontal Beam Pointing (°):	0	0	0
Vertical 3dB beamwidth (°):	17.1	15.3	13.7

Frequency Range (MHz):	Beam 1 (Port 1/2, Left)/ Beam 5 (Port 9/10, Right)		
	694-790	790-880	880-960
Gain (dBi):	18.0	18.9	19.7
Horizontal 3dB beamwidth (°):	20.7	17.6	15.5
Horizontal Beam Pointing (°):	±45	±40	±36
Vertical 3dB beamwidth (°):	21.9	19.7	17.8

Frequency Range (MHz):	Beam 2 (Port 3/4, Left)/ Beam 4 (Port 7/8, Right)		
	694-790	790-880	880-960
Gain (dBi):	19.6	20.1	20.7
Horizontal 3dB beamwidth (°):	16.6	14.7	13.3
Horizontal Beam Pointing (°):	±21	±19	±17
Vertical 3dB beamwidth (°):	18.0	16.1	14.5

Frequency Range (MHz):	All Beams (Port 1 to 10)		
	694-790	790-880	880-960
Return Loss (dB):	>14 (VSWR<1.5)		
Polarization:	±45°		
Electrical Downtilt (°):	6 Fixed		
Upper Sidelobe Suppression (dB):	18	18	18
Front to Back Ratio at 180±30° (dB):	28	28	28
Isolation Between Polarizations (dB):	>25		
Isolation Between Beams (dB):	>15		
Max. Power Per Port (W):	300		
Total power for the antenna(W): (W) :	1000		
Intermodulation IM3 (dBc):	<-150 (2×43 dBm)		
Impedance (ohm):	50		
Lightning Protection:	DC Grounded		
Connector Type:	10×4.3-10 Female		

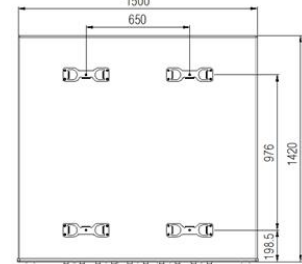
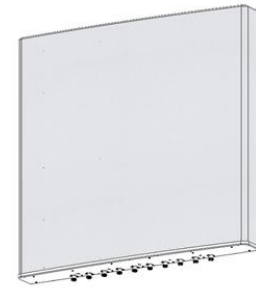
**BASTA Electrical Specifications**

Frequency Range (MHz):	694-790	790-880	880-960
Average Gain by all Beam Tilts (dBi):	19.0	19.7	20.4
Gain by all Beam Tilts Tolerance(dB):	±1.5	±1	±0.9
Horizontal Beamwidth Tolerance(°):	±3.8	±2.7	±2.1
Vertical Beamwidth Tolerance(°):	±3.4	±3.1	±2.9
USLS beampeak to 20° above beampeak(dB):	19	19	18
Front to back Total Power at 180° ± 30°(dB)	26	28	29

# 5UPX0805F6-C

## Mechanical Data

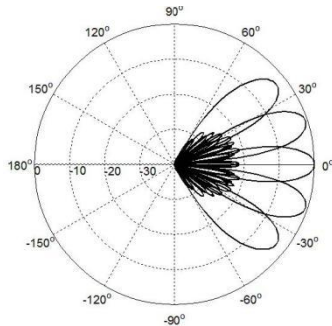
Antenna Dimensions (mm):	1420×1500×180
Packing Dimensions (mm):	1568×1652×304
Antenna Net Weight/Bracket (kg):	67.5/12.2
Antenna Gross Weight (kg):	95.5
Radome Material:	Fiberglass
Pipe OD (mm):	70-114
Mounting Kits (Included):	BA.K.04.00005, Adjustable Downtilt 0°-12° (0°-12° in 2° steps)



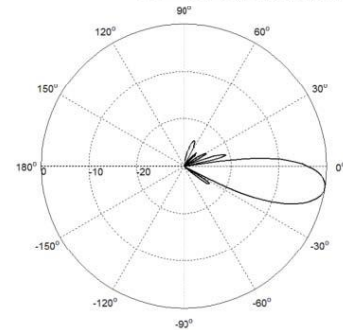
## Environmental Ratings

Humidity:	95%RH@+30°C
Temperature (°C):	-40~+70
Wind Load @150 km/h (N):	Frontal/ Lateral/Rearside: 3630/142/3757
Max. Wind velocity(km/h):	160

## Typical Patterns

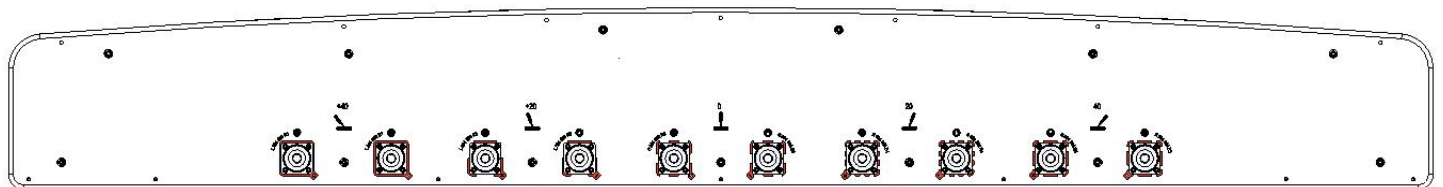


Azimuth



Elevation

## Bottom View



Port Number

1 2 3 4 5 6 7 8 9 10

