

Product Data Sheet

5LPX1106F-C



XXXXX Pol Penta Beam Antenna 5×1710-2690MHz 8° 22.0dBi 6° FET

Electrical Specifications

Frequency Range (MHz):	Beam 1 (Port 1/2)					
	1710-1880	1880-2025	2025-2300	2300-2450	2450-2550	2550-2690
Gain (dBi):	19.3±1.8	20.1±0.3	20.3±0.3	20.0±1.0	19.4±1.3	19.0±1.1
Horizontal 3dB Beamwidth (°):	12.1±2.0	11.0±1.0	9.8±0.6	9.2±0.6	8.8±0.6	8.4±0.7
Vertical 3dB Beamwidth (°):	18.2±2.6	16.3±2.4	14.0±1.0	13.0±1.1	12.1±0.6	11.8±1.4
Horizontal Beam Pointing (°):	35	32	29	27	26	25
Electrical Downtilt (°):	6.0 Fixed					
1 st Upper Sidelobe Suppression (dB):	20	22	23	24	24	22
Front to Back Ratio (dB):	34	32	33	30	35	31
CPR at boresight (dB):	17	26	23	20	19	20

Frequency Range (MHz):	Beam 2 (Port 3/4)					
	1710-1880	1880-2025	2025-2300	2300-2450	2450-2550	2550-2690
Gain (dBi):	20.2±1.0	20.8±0.6	21.4±0.3	21.3±0.5	20.9±0.6	20.6±0.5
Horizontal 3dB Beamwidth (°):	10.8±1.0	10.1±0.9	9.0±0.8	8.3±0.3	8.3±0.2	7.8±0.7
Vertical 3dB Beamwidth (°):	15.3±2.2	13.9±1.4	12.5±0.7	11.7±0.7	11.3±0.2	10.8±0.7
Horizontal Beam Pointing (°):	17	15	14	13	12	12
Electrical Downtilt (°):	6.0 Fixed					
1 st Upper Sidelobe Suppression (dB):	26	23	21	20	20	20
Front to Back Ratio (dB):	34	32	31	37	35	31
CPR at Boresight (dB):	24	24	27	25	23	21

Frequency Range (MHz):	Beam 3 (Port 5/6)					
	1710-1880	1880-2025	2025-2300	2300-2450	2450-2550	2550-2690
Gain (dBi):	20.2±1.0	20.7±0.4	21.0±0.3	21.0±0.3	20.7±0.2	20.7±0.2
Horizontal 3dB Beamwidth (°):	10.2±1.3	9.5±1.0	8.5±0.8	7.9±0.3	7.8±0.2	7.7±0.6
Vertical 3dB Beamwidth (°):	15.0±2.3	13.7±1.5	12.4±0.8	11.7±0.7	11.2±0.6	10.8±0.4
Horizontal Beam Pointing (°):	0	0	0	0	0	0
Electrical Downtilt (°):	6.0 Fixed					
1 st Upper Sidelobe Suppression (dB):	21	21	21	21	22	22
Front to Back Ratio (dB):	34	32	33	37	35	31
CPR at Boresight (dB):	21	21	23	23	24	16

Frequency Range (MHz):	Beam 4 (Port 7/8)					
	1710-1880	1880-2025	2025-2300	2300-2450	2450-2550	2550-2690
Gain (dBi):	20.2±1.0	20.9±0.5	21.4±0.4	21.3±0.6	20.9±0.6	20.6±0.4
Horizontal 3dB Beamwidth (°):	10.5±2.1	9.8±1.0	8.9±0.2	8.4±0.9	8.0±0.7	7.8±0.6
Vertical 3dB Beamwidth (°):	15.4±2.2	14.1±1.4	12.6±0.9	11.8±0.7	11.4±0.5	10.9±0.7
Horizontal Beam Pointing (°):	-17	-16	-14	-13	-12	-12
Electrical Downtilt (°):	6.0 Fixed					
1 st Upper Sidelobe Suppression (dB):	19	20	22	23	25	22
Front to Back Ratio (dB):	34	32	33	32	35	31
CPR at Boresight (dB):	24	24	27	26	22	15



Product Data Sheet

5LPX1106F-C



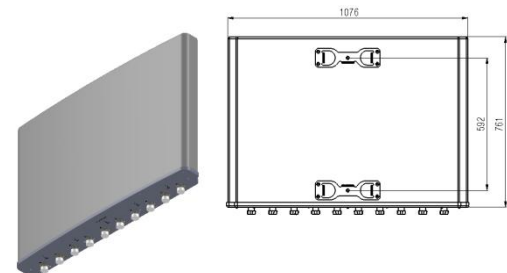
Frequency Range (MHz):	Beam 5 (Port9/10)					
	1710-1880	1880-2025	2025-2300	2300-2450	2450-2550	2550-2690
Gain (dBi):	18.9±2.1	19.9±0.5	20.3±0.2	20.2±0.5	19.8±0.7	19.5±0.7
Horizontal 3dB Beamwidth (°):	12.2±2.1	10.9±1.1	9.8±0.4	9.3±0.5	8.8±0.6	8.2±0.7
Vertical 3dB Beamwidth (°):	18.5±3.0	16.3±2.6	14.0±0.8	13.4±0.5	12.8±0.7	12.1±0.5
Horizontal Beam Pointing (°):	-36	-33	-29	-27	-26	-25
Electrical Downtilt (°):	6.0 Fixed					
1 st Upper Sidelobe Suppression (dB):	20	21	19	18	18	16
Front to Back Ratio (dB):	34	32	33	37	30	31
CPR at Boresight (dB):	16	24	22	15	15	17

Electrical Specifications

Frequency Range (MHz):	All Beams (Port 1 to 10)
	1710-2690
Return Loss (dB):	>14 (VSWR<1.5)
Polarization:	±45°
Cross Polar Isolation (dB):	>25
Beam to beam Isolation(dB):	>16
Max. Power Per Port (W):	200
Total Power for the Antenna(W):	800
Intermodulation IM3 (dBc):	<-150 (2×43 dBm)
Impedance (ohm):	50
Lightning Protection:	DC Grounded
Connector Type:	10×4.3-10 Female

Mechanical Data

Antenna Dimensions (mm):	761×1076×136
Packing Dimensions (mm):	909×1199×237
Antenna Net Weight/Bracket (kg):	31.5 /5.7
Antenna Gross Weight (kg):	43.5
Radome Material:	Fiberglass
Pipe OD (mm):	70-114
Mounting Kits (Included):	BA.K.04.00032, Adjustable Downtilt 0°-10°

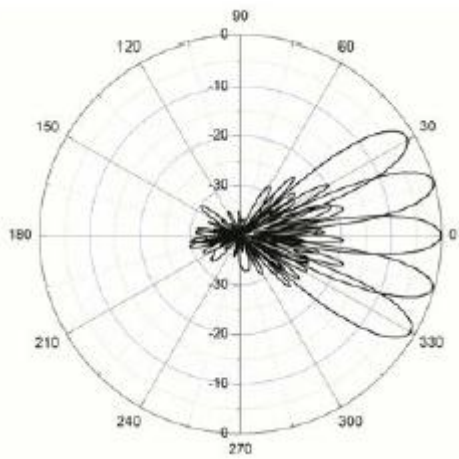


Environmental Ratings

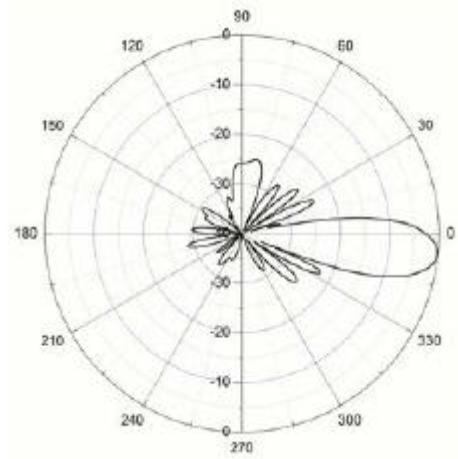
Humidity:	95%RH@+30°C
Temperature (°C):	-40~+70
Wind Load @150 km/h (N):	Frontal/ Lateral/Rearside: 1349/47/1147
Max. Wind velocity(km/h):	200



Typical Patterns



Azimuth



Elevation

Bottom View

