

3ULOX304.8F0-C

3XX Pol Tube Antenna 3×698–960/3×1710–2690MHz 65° /65° 14.0/18dBi 0° FET

Electrical Specifications

Frequency Range (MHz):	3×698-960(R1)			3×1710-2690 (Y1)		
	698-806	806-880	880-960	1710-2170	2300-2490	2490-2690
Gain (dBi),	13.3±0.5	13.5±0.5	14.0±0.5	16.4±0.5	17.4±0.5	17.8±0.5
Return Loss (dB):	>14 (VSWR<1.5)					
Polarization (°):	±45°					
Horizontal 3dB Beamwidth (°):	78	75	73	63	68	62
Vertical 3dB Beamwidth (°),	17.0	15.0	13.5	8.8	6.5	6.2
Electrical Downtilt (°):	0°FET			0°FET		
1 st Upper Sidelobe Suppression (dB):	≥15	≥15	≥15	≥15	≥15	≥15
Front to Back Ratio 180±30°(dB):	≥21	≥22	≥22	≥25	≥25	≥25
Cross Polar Ratio 0° (dB):	≥15	≥15	≥15	≥15	≥15	≥15
Intraband Isolation (dB):	≥25			≥25		
Max. Power Per Port (W):	250			200		
Intermodulation IM3 (dBc):	<-140 (2×43 dBm)					
Impedance (ohm):	50					
Lightning Protection:	DC Grounded					
Connector Type:	12×4.3-10 Female					

BASTA Electrical Specifications

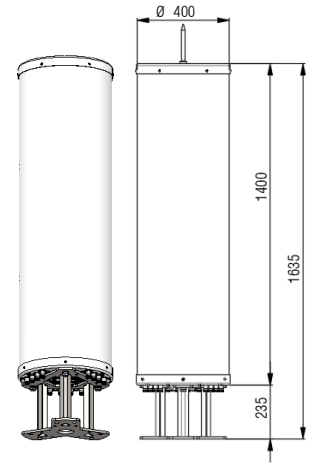
Frequency Range(MHz):						
	698-806	806-880	880-960	1710-2170	2300-2490	2490-2690
Average Gain by all Beam Tilts (dBi):	13.18	13.48	13.92	16.54	17.45	18.18
Gain by all Beam Tilts Tolerance(dB):	±0.54	±0.28	±0.53	±0.36	±0.26	±0.45
Horizontal Beamwidth Tolerance(°):	±4.3	±2.7	±5.6	±6.2	±5.8	±5.3
Vertical Beamwidth Tolerance(°):	±1.6	±0.7	±1.3	±0.8	±0.5	±0.3
USLS beampeak to 20° above beampeak(dB):	15.2	15.8	15.5	16.1	15.4	15.3
Front to back Total Power at 180° ± 30°(dB):	22.9	23.8	24.2	28.0	27.4	28.3
CPR at Boresight(dB):	16.1	17.2	16.8	18.5	19.2	19.6

3ULOX304.8F0-C



Mechanical Data

Antenna Dimensions (mm):	Φ400(Diameter)×1400(Length, mounting base excluded)
Packing Dimensions (mm):	1790(Length)×485(Width)×490(Height)
Antenna Net Weight (kg)/Base(kg):	27/ 10
Antenna Gross Weight (kg):	42
Radome Material:	ABS/ASA
Mounting Kits (Included):	Flange Mounted



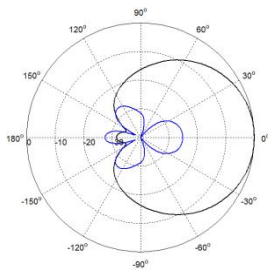
Environmental Ratings

Humidity:	95%RH@+30°C
Temperature (°C):	-20~+70
Wind Load @150 km/h (N):	368
Max. Wind velocity(km/h):	200

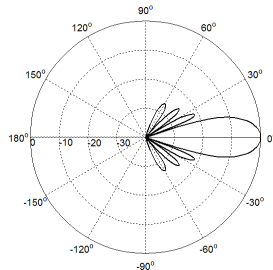
Internal RET Specifications

RET type:	Replaceable RET
RET protocol:	AISG 2.0 /3 GPP
Input voltage range(V):	10-30 DC
Power consumption(W):	< 5 (motor activated , single RET) < 1 (stand by, single RET), < 1.5 (stand by, 12V)
Adjustment time (full range) (s):	< 120 (typically, depending on antenna type)
RET connector:	1 pair of AISG 8 pin male & female
Pin assignment according AISG:	8 pin circular connector conforming to IEC 60130-9 - Ed. 3.0
Lightning protection (kA):	5 (8/20 μs Differential mode), 8 (8/20 μs Common mode)

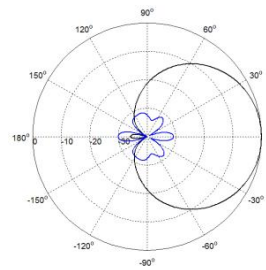
Typical Patterns



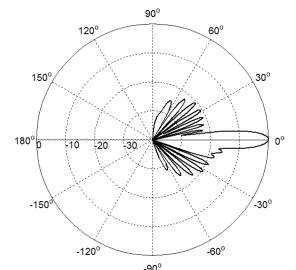
Azimuth(Low band)



Elevation(Low band)



Azimuth(High band)



Elevation(High band)



3ULOX304.8F0-C



Bottom View

