

XXX Pol Panel Triple Beam Antenna 3×1710-2690MHz 16° 19.5 dBi 6° FET**Electrical Specifications**

Frequency Range (MHz):	Beam 2 (Port 3/4, Middle)					
	1710-2300			2300-2690		
	1710-1880	1880-2025	2025-2300	2300-2450	2450-2550	2550-2690
Gain (dBi):	17.8±0.5	18.7±0.5	19.6±0.5	19.4±0.5	18.7±0.5	19.4±0.5
Horizontal 3dB beamwidth (°):	20.9	19.0	17.4	16.0	15.7	14.8
Horizontal Beam Pointing (°):	0	0	0	0	0	0
Vertical 3dB beamwidth (°):	15.6	13.8	12.5	11.4	10.9	10.4

Frequency Range (MHz):	Beam 1 (Port 1/2, Left)/ Beam 3 (Port 5/6, Right)											
	1710-2300						2300-2690					
	1710-1880		1880-2025		2025-2300		2300-2450		2450-2550		2550-2690	
	B1	B3	B1	B3	B1	B3	B1	B3	B1	B3	B1	B3
Gain (dBi):	17.1	17.0	17.7	17.7	18.6	18.6	17.4	17.9	16.8	17.1	16.8	16.9
	±0.5	±0.5	±0.5	±0.5	±0.5	±0.5	±0.5	±0.5	±0.5	±0.5	±0.5	±0.5
Horizontal 3dB beamwidth (°):	22.7	22.7	20.6	20.5	18.7	18.8	17.3	17.2	16.1	16.1	15.0	15.0
Horizontal Beam Pointing (°):	38	-37	34	-34	31	-30	28	-27	27	-26	25	-24
Vertical 3dB beamwidth (°):	18.7	16.6	17.1	14.9	15.6	13.2	14.3	12.1	13.7	11.5	13.1	10.9

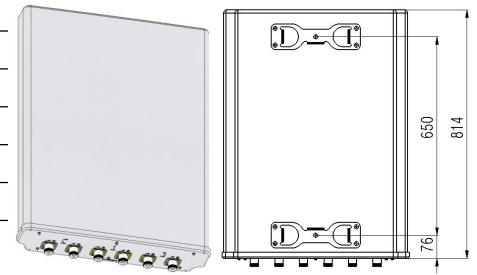
Frequency Range (MHz):	All Beams (Port 1 to 6)											
	1710-2300						2300-2690					
Return Loss (dB):	>14 (VSWR<1.5)											
Polarization (°):	±45											
Electrical Downtilt (°):	6 Fixed						6 Fixed					
1 st Upper Sidelobe Suppression (dB):	18						16					
Front to Back Ratio @180±30°(dB):	33						34					
Isolation Between Polarizations (dB):	25											
Max. Power Per Port (W):	200											
Total Power for the Antenna(W):	800											
Intermodulation IM3 (dBc):	<-150 (2×43 dBm)											
Impedance (ohm):	50											
Lightning Protection:	DC Grounded											
Connector Type:	6x4.3-10 Female											

BASTA Electrical Specifications

Frequency Range (MHz):	1710-1880	1880-2025	2025-2300	2300-2450	2450-2550	2550-2690
Average Gain by all Beams (dBi):	16.7	18.1	18.7	18.1	17.4	17.4
Gain by all Beam Tolerance(dB):	±1.0	±0.8	±1.0	±1.4	±1.4	±1.9
Horizontal Beamwidth Tolerance(°):	±1.7	±1.2	±1.4	±1.0	±0.5	±0.8
Vertical Beamwidth Tolerance(°):	±2.1	±2.2	±2.2	±2.1	±2.0	±1.9
USLS beampeak to 20° above beampeak(dB):	21.7	22.1	18.2	18.6	16.5	19.0
Front to back Total Power at 180° ± 30°(dB):	31.3	35.4	34.0	34.1	33.4	30.3
Total Power at 180° ± 30°,						
CPR at Boresight(dB):	16.5	21.7	19.1	18.5	16.0	17.3

Mechanical Data

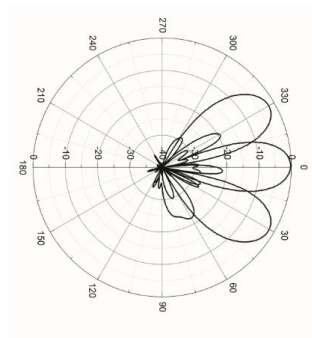
Antenna Dimensions (mm):	814×600×130
Packing Dimensions (mm):	956×720×236
Antenna Net Weight (kg):	20/5.7
Antenna Gross Weight (kg):	30
Radome Material:	Fiberglass
Pipe OD (mm):	70-114
Mounting Kits (Included):	BA.K.04.00032, Adjustable Downtilt 0°-10°(0,3°-10°in 1°Steps)



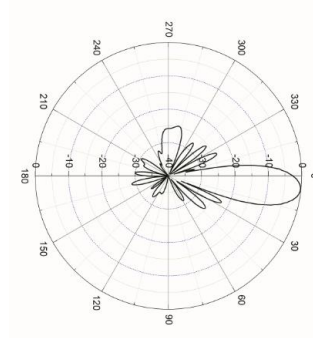
Environmental Ratings

Humidity:	95%RH@+30°C
Temperature (°C):	-40~+70
Wind Load @150 km/h (N):	Frontal/Lateral/Rearside: 826/68/601
Max. Wind velocity(km/h):	200

Typical Patterns



Azimuth



Elevation

Bottom View

