

XXX Pol Panel Triple Beam Antenna 3×1710-2690MHz 18°21/22/21dBi 2-12°Replaceable RET**Electrical Specifications**

Frequency Range (MHz):	Beam 1 (Port 1/2, Left)		
	1710-2690(Y1)		
	1710-2170	2300-2500	2500-2690
Gain (dBi):	18.5±0.9	19.0±0.8	19.8±0.8
Horizontal 3dB Beamwidth (°):	27±4	22±2	19±2
Horizontal 10dB Beamwidth (°):	50±8	38±5	35±3
Horizontal Beam Pointing (°):	38±5	30±5	27±5
Vertical 3dB Beamwidth (°):	7.6±1.2	6.2±0.8	5.7±0.9
1 st Upper Sidelobe Suppression (dB):	15	15	15
Front to Back Ratio (dB):	>25	>25	>25
CPR at Boresight (dB):	15	15	15

Frequency Range (MHz):	Beam 2 (Port 3/4, Middle)		
	1710-2690(Y2)		
	1710-2170	2300-2500	2500-2690
Gain (dBi):	20.3±0.7	20.9±0.8	21.0±0.9
Horizontal 3dB beamwidth (°):	22±4	18±1.5	17±1
Horizontal 10dB Beamwidth (°):	40±6	31±2.2	29±2
Horizontal Beam Pointing (°):	0±4	0±3	0±2
Vertical 3dB beamwidth (°):	7.6±1.2	6.2±0.7	5.7±0.7
1 st Upper Sidelobe Suppression (dB):	15	15	15
Front to Back Ratio (dB):	>25	>25	>25
CPR at Boresight (dB):	15	15	15

Frequency Range (MHz):	Beam 3 (Port 5/6, Right)		
	1710-2690(Y3)		
	1710-2170	2300-2500	2500-2690
Gain (dBi):	18.6±0.9	19.6±0.8	19.6±0.8
Horizontal 3dB Beamwidth (°):	27±4	22±2	19±2
Horizontal 10dB Beamwidth (°):	50±8.8	38±5	35±3
Horizontal Beam Pointing (°):	-38±5	-30±5	-27±5
Vertical 3dB Beamwidth (°):	7.6±1.2	6.2±0.7	5.7±0.7
1 st Upper Sidelobe Suppression (dB):	15	15	15
Front to Back Ratio (dB):	>25	>25	>25
CPR at Boresight (dB):	15	15	15

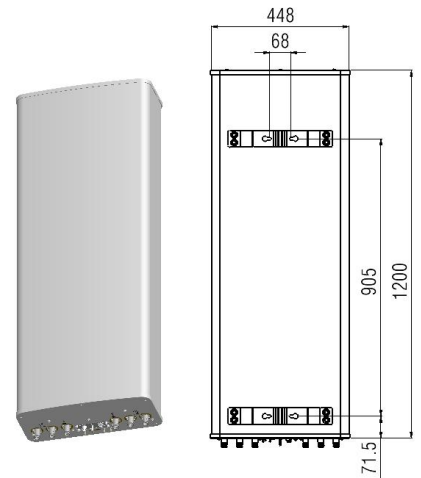
Frequency Range (MHz):	All Beams (Port 1 to 6)		
	1710-2690(Y1,Y2,Y3)		
	1710-2170	2300-2500	2500-2690
Return Loss (dB):	>14 (VSWR<1.5)		
Polarization:	±45°		
Electrical Downtilt (°):	2-12		
Isolation Between Polarizations (dB):	>25		
Isolation Between Beams (dB):	>16		
Max. Power Per Port (W):	200		
Total Power for the Antenna (W):	1000		

3LPX0510P-V1-2C

Intermodulation IM3 (dBc):	<-150 (2×43dBm)
Impedance (ohm):	50
Lightning Protection:	DC Grounded
Connector Type:	6×4.3-10 Female

Mechanical Data

Antenna Dimensions (mm):	1200×448×200
Packing Dimensions (mm):	1460×535×290
Antenna Net Weight/Bracket (kg):	19.5/5.9
Antenna Gross Weight (kg):	29.5
Radome Material:	Fiberglass
Pipe OD (mm):	50-115
Mounting Kits (Included):	BA.K.04.00069151, Adjustable Downtilt 0-20°



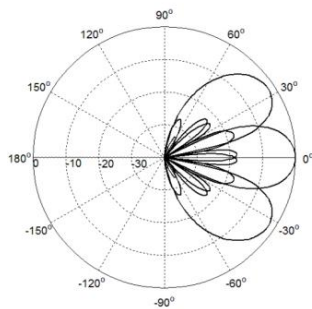
Environmental Ratings

Humidity:	95%RH@+30°C
Temperature (°C):	-40~+70
Wind Load @150 km/h (N):	Frontal/Lateral/Rearside: 677/162/733
Max. Wind velocity (km/h):	200

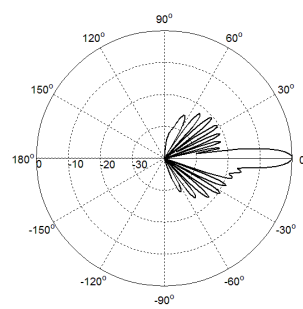
Internal RET Specifications

RET type:	Replaceable RET
RET protocol:	AISG 2.0 /3 GPP
Input voltage range(V):	10-30 DC
Power consumption(W):	< 5 (motor activated, single RET) < 1 (stand by, single RET), < 1.5 (stand by, 12V)
Adjustment time (full range) :(s):	< 120 (typically, depending on antenna type)
RET connector:	1 pair of AISG 5 pin male & female
Pin assignment according AISG:	8 pin circular connector conforming to IEC 60130-9 - Ed. 3.0
Lightning protection (kA):	5 (8/20 μs Differential mode), 8 (8/20 μs Common mode)

Typical Patterns



Azimuth



Elevation

3LPX0510P-V1-2C

Bottom View



Correlation Table

Frequency range	Array	Connector	RET S/N
1710–2690 MHz	Y1	1-2	BRxxx.....Y1
1710–2690 MHz	Y2	3-4	BRxxx.....Y2
1710–2690 MHz	Y3	5-6	BRxxx.....Y3

