

# 3L2PX0510P-2C



## 6X Pol Panel Triple Beam Antenna 2×3×1710-2690MHz 18° 21/22/21dBi 2°-12° Replaceable RET

### Electrical Specifications

Frequency Range (MHz):		Beam 1 (Y1, Port 1/2, Y4, Port 7/8, Left)		
		1710-2690(Y1,Y4)		
		1710-2170	2300-2500	2500-2690
Gain (dBi):	Bottom	18.5±0.9	19.6±0.8	19.7±0.8
	Top	18.3±0.9	19.3±0.8	19.3±0.8
Horizontal 3dB Beamwidth (°):		27±4	21±2	18±2
Horizontal 10dB Beamwidth (°):		50±8	36±3.5	33±3
Horizontal Beam Pointing (°):		38	30	27
Vertical 3dB Beamwidth (°):		8±1.2	6.5±0.8	6.1±0.9
1 <sup>st</sup> Upper Sidelobe Suppression (dB):		18	18	17
Horizontal Sidelobe Suppression(dB):		17	18	16
Front to Back Ratio (dB):		29	28	27
CPR at Boresight (dB):		20	16	16

Frequency Range (MHz):		Beam 2 (Y2, Port 3/4, Y5, Port 9/10, Middle)		
		1710-2690(Y2,Y5)		
		1710-2170	2300-2500	2500-2690
Gain (dBi):	Bottom	20.3±0.7	20.9±0.8	20.9±0.9
	Top	20.0±0.7	20.6±0.7	20.5±0.9
Horizontal 3dB beamwidth (°):		22±4	19±3	16±2
Horizontal 10dB Beamwidth (°):		39±6	32±5	29±4
Horizontal Beam Pointing (°):		0	0	0
Vertical 3dB beamwidth (°):		8±1.2	6.5±0.7	6.0±0.7
1 <sup>st</sup> Upper Sidelobe Suppression (dB):		16	17	16
Horizontal Sidelobe Suppression(dB):		16	17	19
Front to Back Ratio (dB):		31	31	30
CPR at Boresight (dB):		17	20	18

Frequency Range (MHz):		Beam 3 (Y3, Port 5/6, Y6, Port 11/12, Right)		
		1710-2690(Y3,Y6)		
		1710-2170	2300-2500	2500-2690
Gain (dBi):	Bottom	18.6±0.9	19.6±0.8	19.6±0.8
	Top	18.2±0.9	19.3±0.8	19.3±0.8
Horizontal 3dB Beamwidth (°):		27±4	21.5±3	18±3
Horizontal 10dB Beamwidth (°):		48±6	38±5	32±4
Horizontal Beam Pointing (°):		-38	-30	-27
Vertical 3dB Beamwidth (°):		8±1.1	6.5±0.7	6.1±0.7
1 <sup>st</sup> Upper Sidelobe Suppression (dB):		17	18	18
Horizontal Sidelobe Suppression(dB):		15	17	17
Front to Back Ratio (dB):		29	28	27
CPR at Boresight (dB):		22	16	16

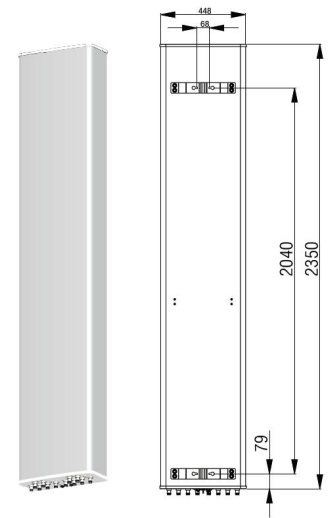
Frequency Range (MHz):	All Beams (Port 1 to 12)
------------------------	--------------------------



	1710-2690(Y1,Y2,Y3 ,Y4 ,Y5 ,Y6)		
	1710-2170	2300-2500	2500-2690
Return Loss (dB):	>14 (VSWR<1.5)		
Polarization:	±45°		
Electrical Downtilt (°):	2-12		
Isolation Between Polarizations (dB):	>25		
Isolation Between Beams (dB):	>16		
Max. Power Per Port (W):	200		
Total Power for the Antenna (W):	1000		
Intermodulation IM3 (dBc):	<-150 (2×43dBm)		
Impedance (ohm):	50		
Lightning Protection:	DC Grounded		
Connector Type:	12×4.3-10 Female		

**Mechanical Data**

Antenna Dimensions (mm):	2350×448×200
Packing Dimensions (mm):	2610×535×290
Antenna Net Weight/Bracket (kg):	41.5/5.9
Antenna Gross Weight (kg):	53.5
Radome Material:	Fiberglass
Pipe OD (mm):	50-115
Mounting Kits (Included):	BA.K.04.00069311, Adjustable Downtilt 0°-10°



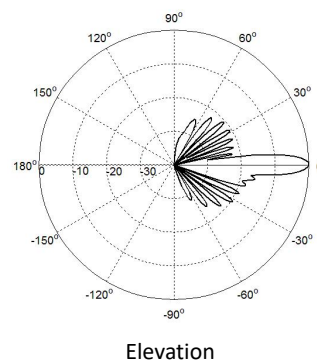
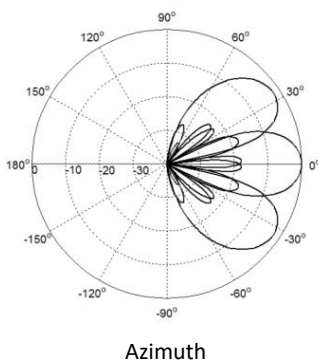
**Environmental Ratings**

Humidity:	95%RH@+30°C
Temperature (°C):	-40 ~ +70
Wind Load @150 km/h (N):	Frontal/Lateral/Rearside: 1394/339/1510
Max. Wind velocity (km/h):	200

**Internal RET Specifications**

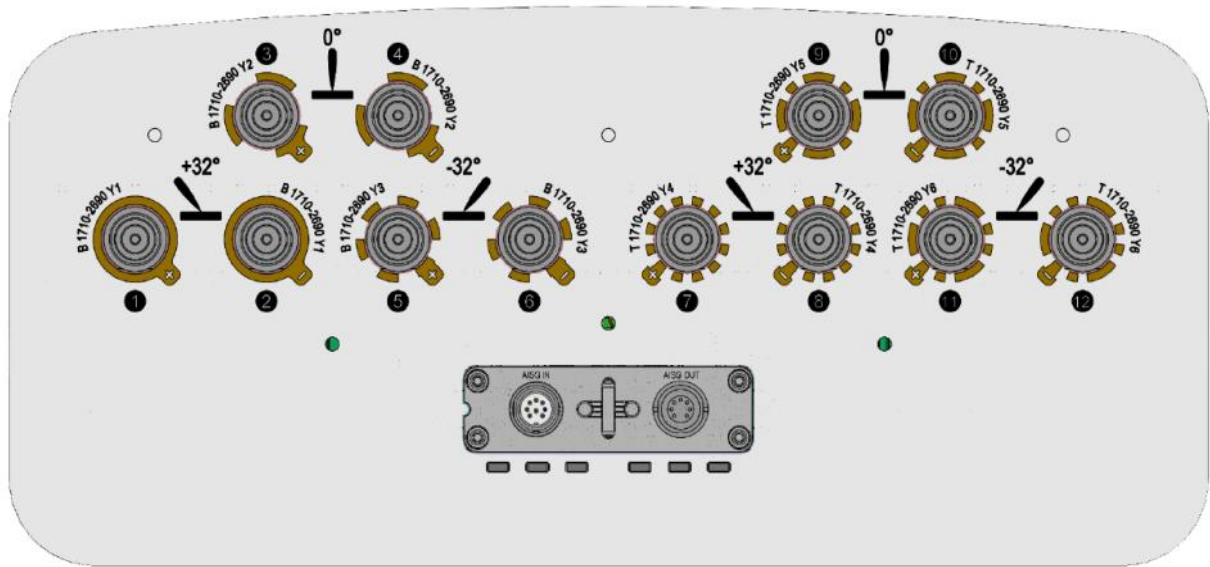
RET type:	Replaceable RET
RET protocol:	AISG 2.0 /3 GPP
Input voltage range(V):	10-30 DC
Power consumption(W):	< 5 (motor activated, single RET) < 1 (stand by, single RET), < 1.5 (stand by, 12V)
Adjustment time (full range) :(s):	< 120 (typically, depending on antenna type)
RET connector:	1 pair of AISG 5 pin male & female
Pin assignment according AISG:	8 pin circular connector conforming to IEC 60130-9 - Ed. 3.0
Lightning protection (kA):	5 (8/20 μs Differential mode), 8 (8/20 μs Common mode)

**Typical Patterns**



# 3L2PX0510P-2C

## Bottom View



### Correlation Table

Frequency range	Array	Connector
1710-2690MHz	Y1	1-2
1710-2690MHz	Y2	3-4
1710-2690MHz	Y3	5-6
1710-2690MHz	Y4	7-8
1710-2690MHz	Y5	9-10
1710-2690MHz	Y6	11-12

