

2LLPX0408P-E2-C

XXXX Pol Twin Beam Panel Antenna 2×1710-2690/2×1710-2690MHz 32°/32° 18.5/18.5dBi 2-10° /2-10° Replaceable RET

Electrical Specifications

Frequency Range (MHz):	2×1710-2690(Y1,Y2)			2×1710-2690(Y3,Y4)		
	1710-1880	1880-2170	2300-2690	1710-1880	1880-2170	2300-2690
Gain (dBi):	16.9±0.5	18.1±0.5	18.7±0.5	16.7±0.5	17.8±0.5	18.4±0.5
Return Loss (dB):	>14(VSWR<1.5)					
Polarization:	±45°					
Horizontal 3dB Beamwidth (°):	2×31	2×27	2×23	2×30	2×28	2×23
Horizontal Beam Pointing (°) :	-28, +28	-25, +25	-21, +21	-28, +28	-25, +25	-21, +21
Vertical 3dB Beamwidth (°):	9.1	8.1	6.4	9.2	8.0	6.3
Electrical Downtilt (°):	2-10 Independently Continuously Adjustable					
1 st Upper Sidelobe Suppression (dB):	16			16		
Horizontal Sidelobe Suppression(dB):	18	18	19	18	18	19
Polarizations Isolation(dB) :	>28			>28		
Intermodulation IM3 (dBC):	<-150 (2×43 dBm)					
Impedance (ohm):	50					
Max. Power Per Port (W):	200					
Lightning Protection:	DC Grounded					
Connector Type:	8×4.3-10 Female					

BASTA Electrical Specification

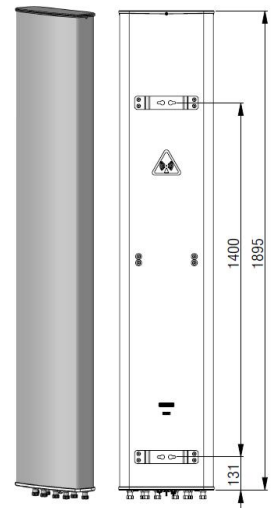
Frequency Range(MHz):	1710-2690(Y1,Y2)			1710-2690(Y3,Y4)		
	1710-1880	1880-2170	2300-2690	1710-1880	1880-2170	2300-2690
Average Gain by all Beam Tilts(dBi):	16.7	17.7	18.3	16.4	17.4	18.1
Gain by all Beam Tilts Tolerance(dB):	±1.3	±1.0	±1.2	±1.2	±0.9	±1.1
Average Gain by Beam Tilt (dBi):	2° 168	2° 180	2° 185	2° 166	2° 176	2° 183
	6° 167	6° 177	6° 183	6° 164	6° 174	6° 181
	10° 16.5	10° 175	10° 180	10° 16.1	10° 17.2	10° 17.9
3dBHorizontal Beamwidth Tolerance(°):	±3.4	±3.2	±2.7	±4.2	±2.6	±2.5
3dBVertical Beamwidth Tolerance(°):	±1.9	±1.8	±1.5	±1.9	±1.9	±1.7
Upper Side Lobe Suppression, Peak to 20°(dB):	15	16	15	15	16	15
Front to back Total Power at 180° ± 30°(dB):	25	28	29	24	27	28
CPR at Boresight(dB):	15	14	13	12	15	14

Mechanical Data

Antenna Dimensions (mm):	1895×370×124
Packing Dimensions (mm):	2263×436×170
Antenna Net Weight/Bracket (kg):	24/5.7
Antenna Gross Weight (kg):	35.1
Radome Material:	Fiberglass
Pipe OD (mm):	70-114
Mounting Kits (Included):	BA.K.04.00011, Adjustable Downtilt 0-12°

Environmental Ratings

Humidity:	95%RH@+30°C
Temperature (°C):	-40~+70
Wind Load @150 km/h (N):	Frontal/ Lateral/ Rearside: 972/232/686
Max.Wind velocity(km/h):	200

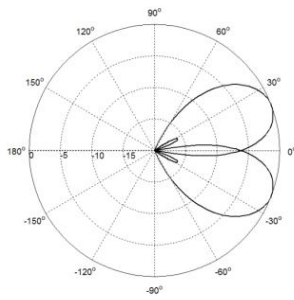


2LLPX0408P-E2-C

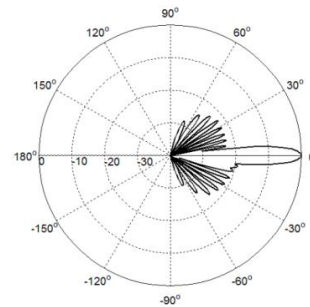
Internal RET Specifications

RET type:	RET Replaceable RET
RET protocol:	AISG2.0 /3GPP
Input voltage range(V):	10-30 DC
Power consumption(W):	< 5 (motor activated , single RET) < 1 (stand by, single RET), < 1.5 (stand by, 12V)
Adjustment time (full range) (s):	< 120 (typically, depending on antenna type)
RET connector:	1 pair of AISG 5 pin male & female
Pin assignment according AISG:	5-pin circular connector conforming to IEC 60130-9 - Ed. 3.0
Lightning protection (kA):	5 (8/20 μ s Differential mode), 8 (8/20 μ s Common mode)

Typical Patterns

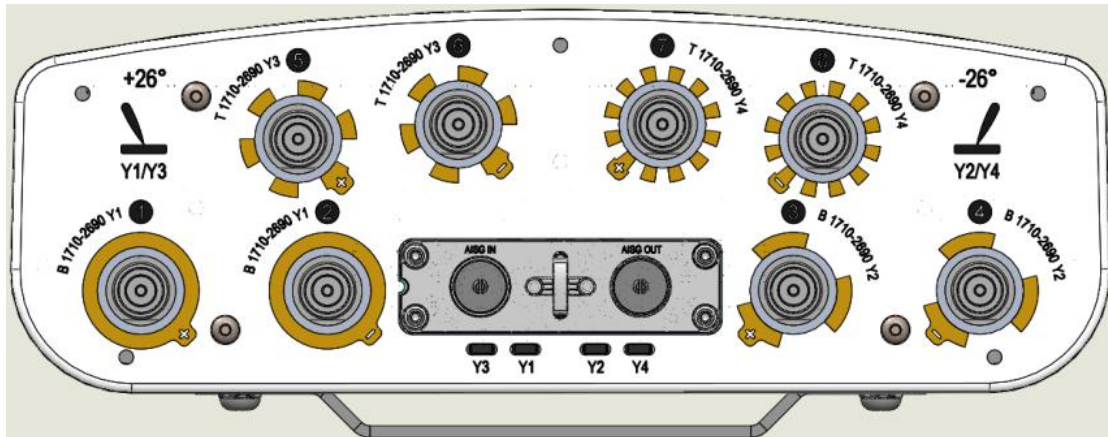


Azimuth



Elevation

Bottom View



Correlation Table

Frequency range	Array	Connector
1710–2690 MHz	Y1	1-2
1710–2690 MHz	Y2	3-4
1710–2690 MHz	Y3	5-6
1710–2690 MHz	Y4	7-8

