

PONCELL

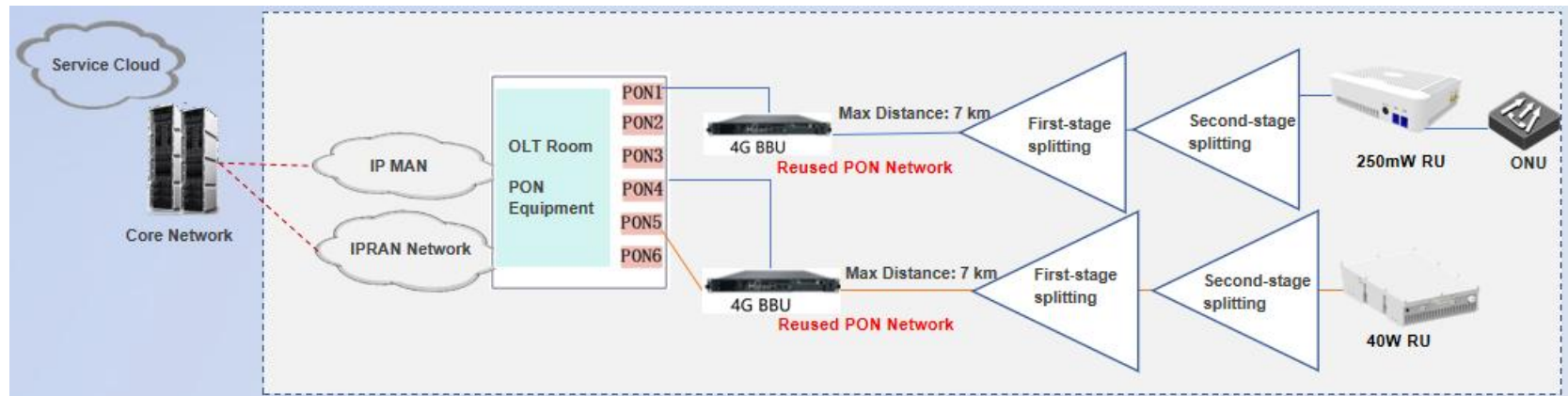
Integrated Coverage Solution

Overview

The PONCELL base station solution reuses the PON network without affecting broadband services, and achieves LTE/NR coverage by leveraging time-division fronthaul technology.

Networking Architecture

The PONCELL base station adopts a two-level distributed architecture, consisting of BBU and RU. The BBU handles digital signal processing, while the RU is responsible for RF signal transmission and reception.



Features

Time-division fronthaul technology

- ✓ Reuse PON network for fixed-mobile convergence; "PON network coverage = cellular wireless coverage"

Flexible deployment

- ✓ BBU centralized in equipment room; RU plug-and-play; 4/5G coverage via PON network quickly

Low construction investment

- ✓ Two-level architecture saves expansion units; PON network reuse cuts fiber costs

Easy maintenance

- ✓ All devices support network management; BBU centralized deployment eases maintenance

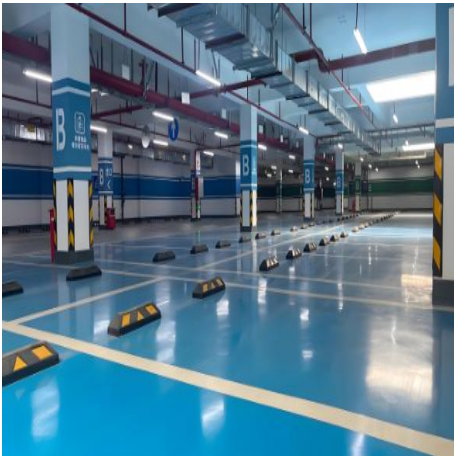
Application Scenarios



commercial residential buildings



urban villages

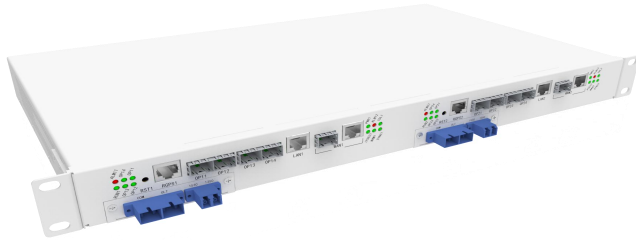


underground parking lots



remote large villages

Product Introduction



4G BBU



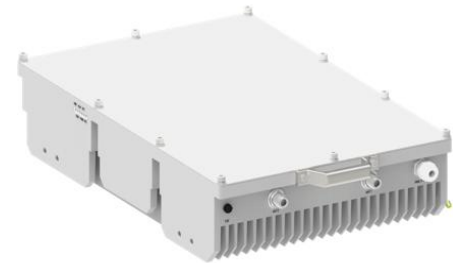
5G BBU



250mW RU



5W RU



40W RU