

Digital Fiber Optic Repeater Wide Coverage Solution

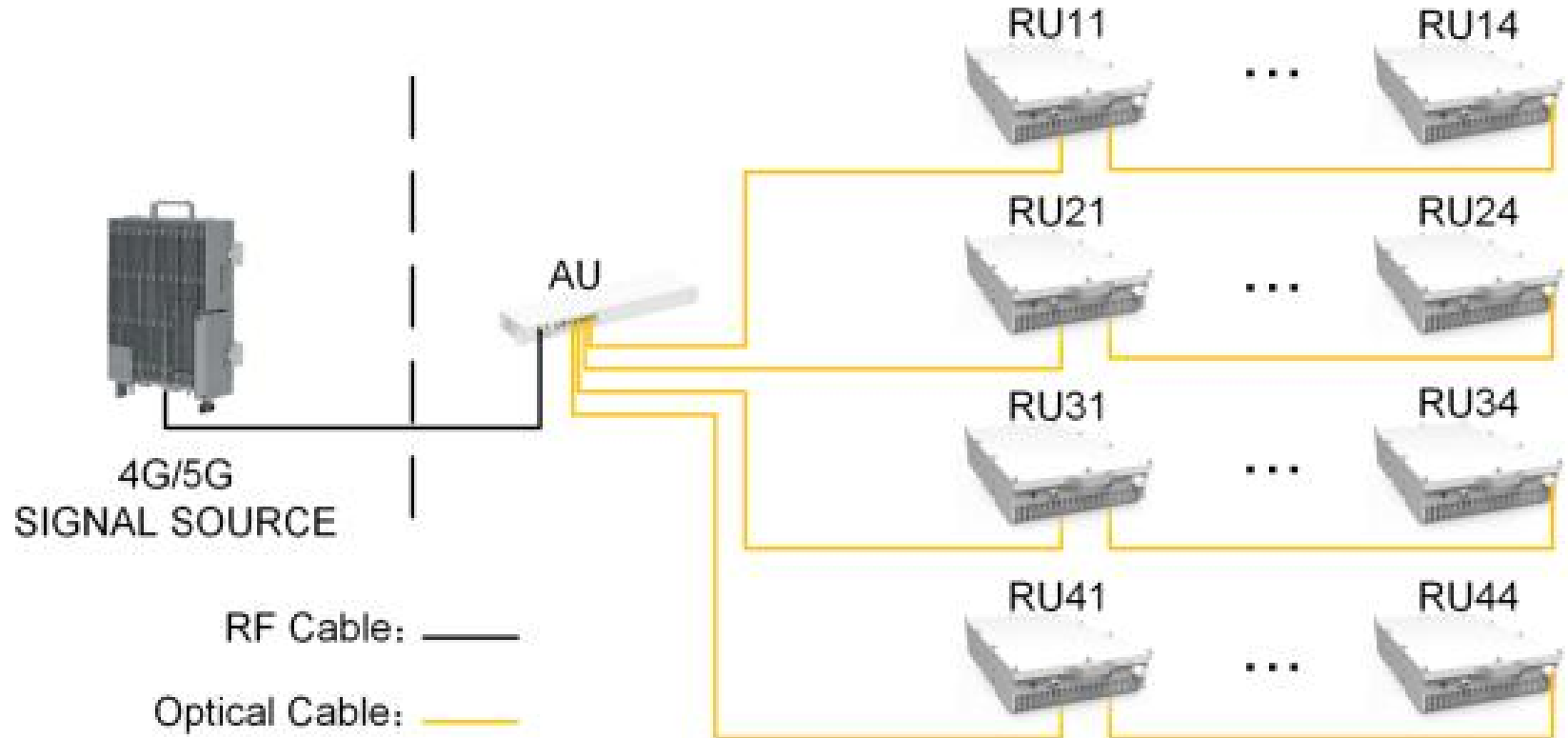
Overview

Digital Optical Fiber Repeater Wide-Area Coverage Solution leverages the flexibility of digital fiber-optic networking as well as features of the remote radio unit such as high output power and group delay auto-compensation to effectively resolve signal coverage challenges in diverse indoor and outdoor scenarios.

It is suitable for a wide range of complex environments, including rural areas, along highways and high-speed rail lines, and tunnels.

Networking Architecture

The digital fiber optic repeater is mainly composed of two parts: AU and RU. It is a form of digital fiber optic repeater that can be flexibly installed in a distributed manner.



Features

Flexible coverage:

- ✓ Remote units deployed dispersedly for irregular scenarios; group delay compensation enables ultra-long coverage

High signal quality:

- ✓ Digital tech reduces distortion, ensuring clear voice and stable data

Strong compatibility:

- ✓ Supports 4G/5G multi-standard, meeting diverse communication needs

Easy O&M:

- ✓ Remote monitoring + modular design for fast fault location and low maintenance cost

Cost advantage:

- ✓ Lower deployment cost than macro base stations; cycle shortened to 1-2 weeks

Application Scenarios

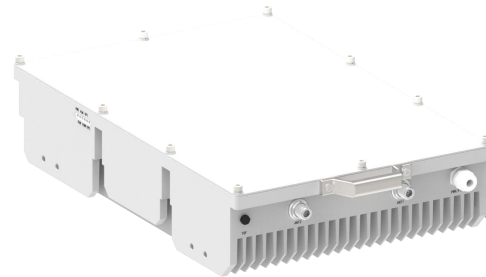


- ✓ Wide-area coverage in remote villages
- ✓ Long-distance coverage along highways and railways
- ✓ Outdoor wide-area coverage in large parks

Product Introduction



Digital Access Unit (DAU)



Digital Radio Remote Unit (DRU)