

LTE/NR Distributed Base Station Capacity & Coverage Solution

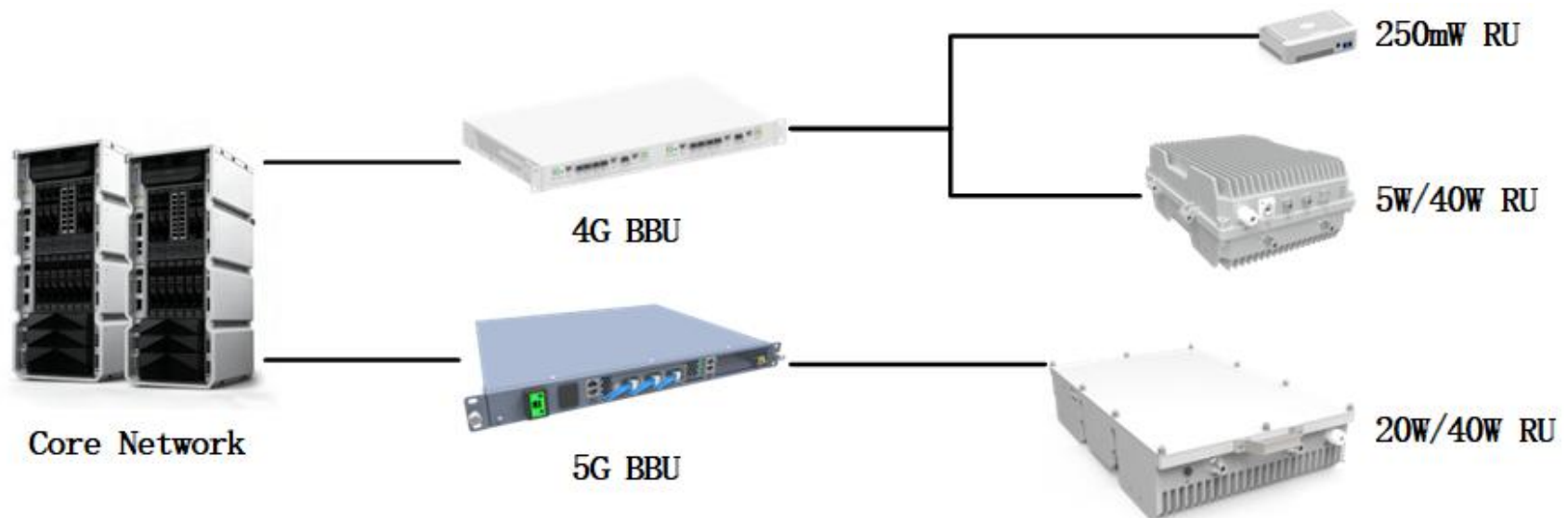
Overview

The 4G/5G distributed base station, through the separated deployment and coordinated operation of BBU and RRU, balances cost, efficiency, and flexibility to achieve precise coverage.

This provides critical support for operators in addressing complex scenarios and technological evolution.

Networking Architecture

The distributed base station features a two-tier network architecture, with the BBU and RRU deployed separately. The BBU is responsible for digital baseband processing, and the RRU for RF transmission and reception.



Features

1. Flexible Deployment & Rapid Rollout

- ✓ Strong adaptability to various deployment scenarios
- ✓ Significantly shortened project timeline

2. Coverage Optimization & Capacity Enhancement

- ✓ Improved signal quality
- ✓ Dynamic resource allocation

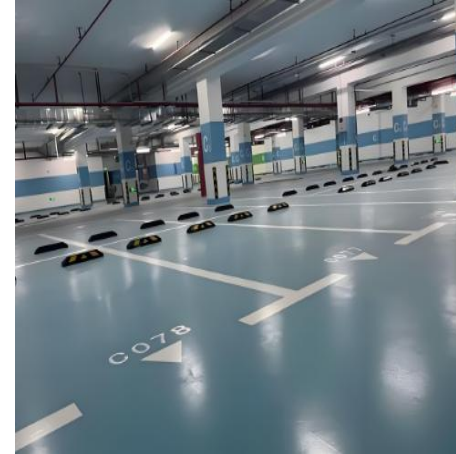
3. Cost Efficiency & Simplified O&M

- ✓ Multi-standard support
- ✓ Enhanced maintenance efficiency

Application Scenarios



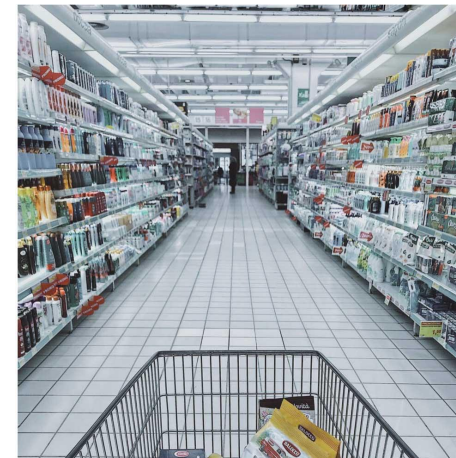
High-Rise Residential Buildings



Underground Parking Lots



Elevators



Street-Level Shops

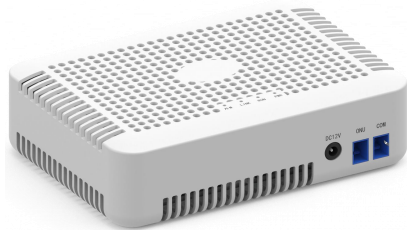
Product Photos



4G BBU



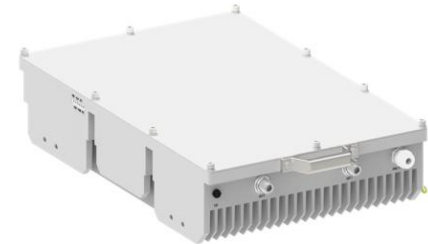
5G BBU



250mW RU



5W RU



40W RU