



**SHENZHEN BELOONG OPTO-
ELECTRONIC TECHNOLOGY CO., LTD**

C O M P A N Y P R O F I L E

Beloong Opto-Electronic Technology Co, Ltd has been in terminal display equipment since 2005. We research and manufacture LCD video wall, advertising player, LCD Monitor, Interactive touch all in one pc, Conference tablet and so on .In the past 15 years, Beloong has served more than 5000 companies.In the past 15 years, Belong continued to grow and became the source enterprise of the terminal display industry with a market share of 37%.

In the future, Beloong will continue to develop and make progress with a more focused spirit. Improve the program and service with more professional technology .

In the future, Beloong will become the leader in the terminal display industry and lead the development of the industry.



ENTERPRISE Honor



CLASSIC CASE

Our company adheres to the business philosophy of customer first and service first, with excellent service quality, professional technical service strength, and a skilled customer service team.

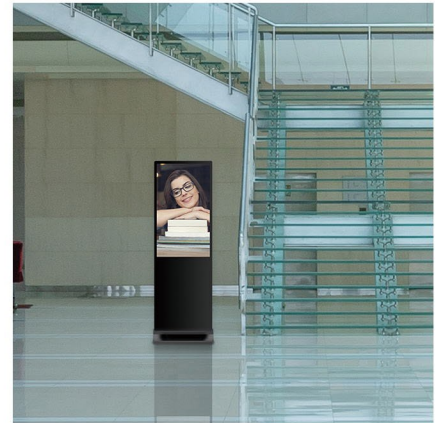
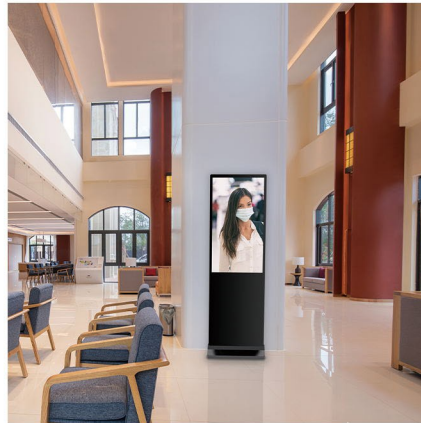


Advertising Display

The concept of the vertical advertising machine has literally described his shape. The so-called vertical is the form of standing on the ground. The industry understands the concept of floor-standing advertising machine, vertical advertising machine, etc., which can have horizontal screens. Vertical and vertical screen vertical design appearance, etc.



Application



PRODUCT FEATURES

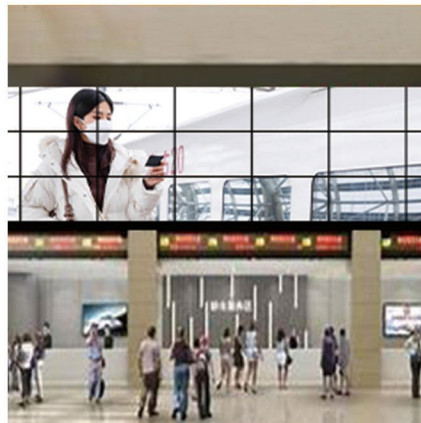
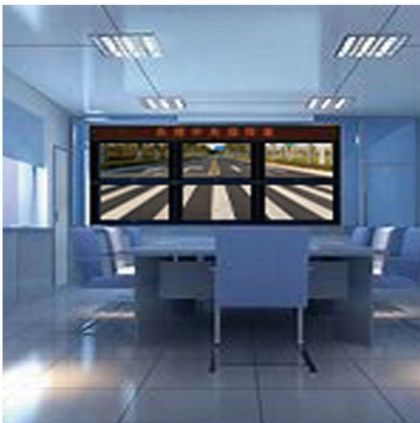
- ◆ Aluminum alloy frame: matt all-aluminum wire drawing, metal punching back panel, round corner design, tempered glass, acrylic, safe and reliable, sturdy and durable
- ◆ Beautiful and fashionable: the model structure is professionally designed, made of high-grade materials and specially opened molds
- ◆ Appearance color: black/silver/gold/white/red, etc.
- ◆ Optional solutions: stand-alone version, Android network solution, X86 network solution, touch control solution
- ◆ Product size: 21.5 inches to 110 inches
- ◆ Customizable appearance

LCD Video Wall

The LCD splicing large-screen display system is widely used in various industry terminal display projects, professional-level customized software, using an embedded processing system to flexibly manage the information processing and power supply of each unit screen, and realize the communication between each unit display through the serial port ; Adopting signal parallel processing technology, effectively increasing the amount of input signals, greatly improving the speed of the system, effectively realizing multi-signal input, far surpassing ordinary industrial computer equipment, and being more intelligent, humanized and customized to meet the special needs of customers.



Application



PRODUCT FEATURES

- ◆High brightness, high color gamut, high contrast, high resolution to ensure perfect display effect
- ◆Using the new ultra-wide viewing angle extension technology to ensure that the image is not deformed and the color is not distorted within the horizontal and vertical viewing angles of 178°
- ◆Ultra-narrow stitching, almost seamless display effect
- ◆Abundant built-in signal interfaces to meet various needs
- ◆Simple modular design, special back cover design, easy installation and maintenance

Conference Plate

The conference panel integrates many conference room office equipment such as projectors, electronic whiteboards, screens, speakers, TVs, computers, etc., making the conference room environment more concise and comfortable, and its high-definition, high-brightness, high-contrast display. This feature solves the shortcomings and limitations of traditional projector equipment that rely too much on light in terms of display effects. In addition, the conference tablet can also realize the cross-space real-time transmission of on-site audio, video and screen writing content through the Internet, perfectly showing the charm of remote video conference application scenarios.



Application



PRODUCT FEATURES

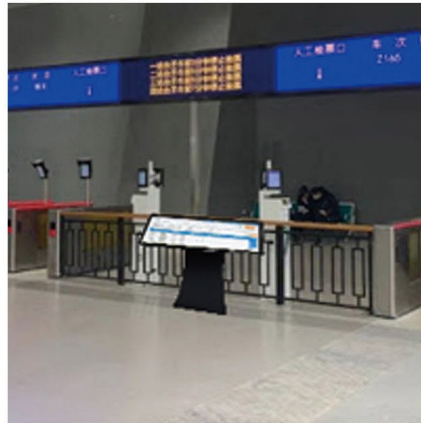
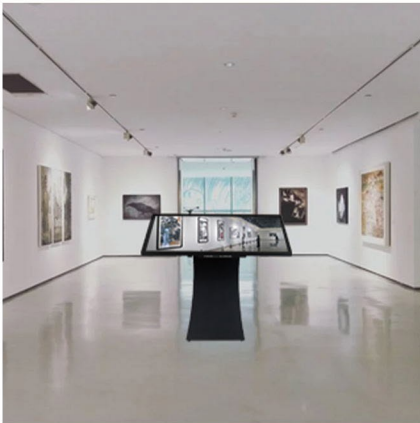
- ◆Eye-protection optical design: protect eyes from strong blue light, improve visual fatigue and sleep quality
- ◆Smooth writing, restore original handwriting of chalk and brush
- ◆4mm physical tempered vandal-proof high-transparent glass; enhance visual effects and enhance touch experience
- ◆High-speed 10-point touch writing experience, better roundness, faster writing speed
- ◆Using international standard OPS slot, integrated plug-in design, easy to upgrade and maintain, there is no visible connection line of computer module outside, and the body is beautiful
- ◆The front three-in-one TV computer switch button, integrated design, can not only focus the attention of students when the device is temporarily not used; it can also save energy, save energy and environmental protection, and also extend the life of the machine. This design is also convenient for users to use

Horizontal Advertising Machine

The new era must be the era of intelligence. Horizontal touch all-in-one machines have been used in all aspects of our daily life and work, such as political parties, financial securities, public utilities, window industries, office buildings, various venues, hotels, entertainment, commercial chains, and buildings. Many industries and places such as residential quarters have broad market prospects.



Application



PRODUCT FEATURES

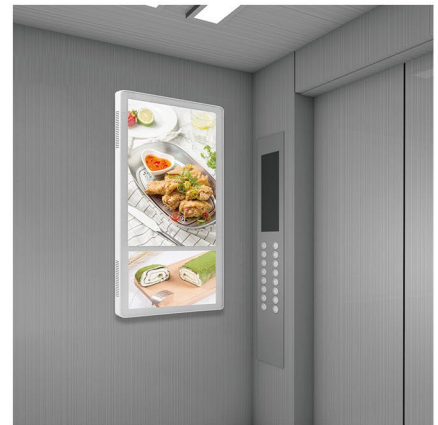
- ◆ Full metal shell, arc design, safe and reliable, sturdy and durable
- ◆ Beautiful and fashionable: the model structure is professionally designed, made of high-grade materials and specially opened molds
- ◆ Appearance color: black/silver/gold/white/red, etc.
- ◆ Optional solutions: Android, 1037, i3, i5, i7
- ◆ Product size: 19 inches to 70 inches
- ◆ Touch mode: infrared, capacitance, nanometer
- ◆ Customizable appearance

Elevator Advertising Machine

The wall-mounted advertising player is a brand-new media concept, which refers to the multimedia that publishes business, financial and entertainment information through large-screen terminal display devices in large shopping malls, supermarkets, hotel lobbies, restaurants, cinemas and other public places where people flow together. Professional audio-visual system.



Application



PRODUCT FEATURES

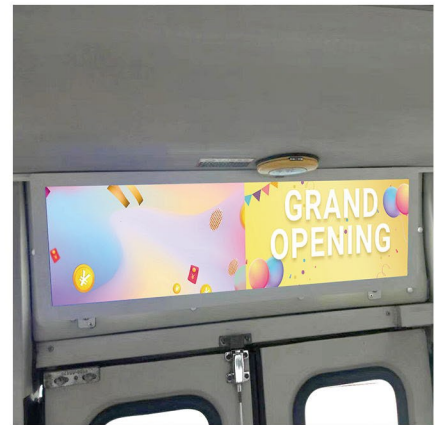
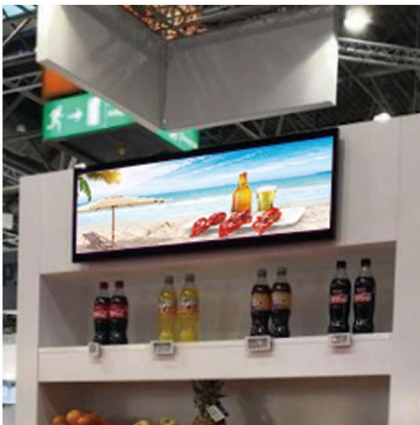
- ◆ Aluminum alloy frame: matt all-aluminum wire drawing, metal punching back panel, round corner design, tempered glass, acrylic, safe and reliable, sturdy and durable
- ◆ Beautiful and fashionable: the model structure is professionally designed, made of high-grade materials and specially opened molds
- ◆ Appearance color: black/silver/gold/white/red, etc.
- ◆ Optional solutions: stand-alone version, Android network solution, X86 network solution, touch control solution
- ◆ Product size: 10.1 inch to 110 inch
- ◆ Customizable appearance

LCD Stretched Bar Screen

It is widely used in building door plates, government, bank and other public institutions signs, elevator advertising displays, house signs, equipment and instrument displays, elevator/government/commercial sign boards, taxi top screens, advertising display screens, public transportation/ Metro vehicle station announcement system, government affairs/commercial signage.



Application



PRODUCT FEATURES

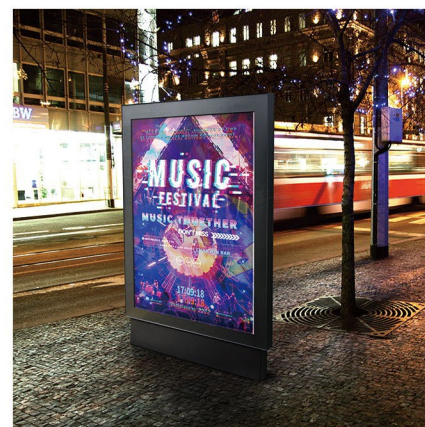
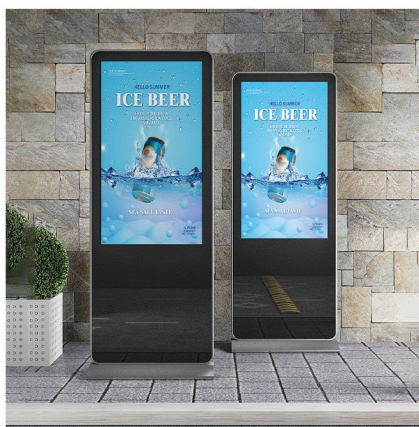
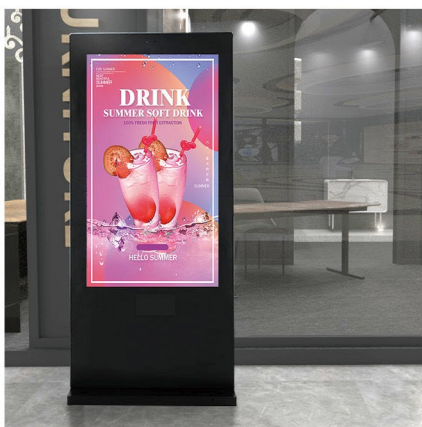
- ◆HD decoding, full HD picture quality display, smooth color changes like a visual feast
- ◆Multiple split screen modes, can create programs with click function, play videos and pictures at the same time, fluctuating subtitles, more template support
- ◆Intelligent switching between horizontal and vertical screens, which can adapt to installation requirements in different scenarios
- ◆7*24 hours stable work, support timing switch machine, low power consumption and display unlimited wonderful content in a limited space at the same time

Outdoor Digital Signage

The outdoor advertising machine can display your information outdoors, bringing good visual and auditory enjoyment to outdoor information dissemination. It is widely used in outdoor advertising broadcasting, outdoor public information release, outdoor media communication, touch interactive inquiry and other fields. Outdoor advertising machines have unparalleled advantages in transmitting information and expanding influence. A giant advertisement set up in a prime area of the city is a must for any company that wants to build a lasting brand image. Its directness and simplicity are enough to fascinate the world. The big advertisers even often become a city's landmark building.



Application



PRODUCT FEATURES

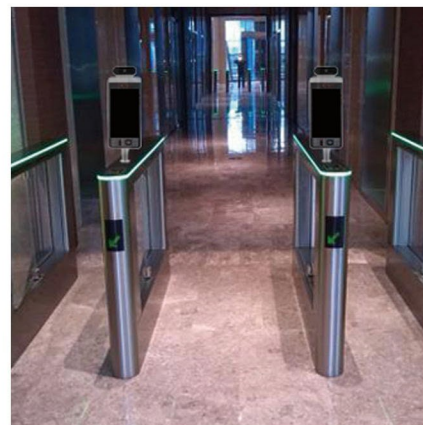
- ◆High-brightness LCD screen, brightness reaches 1500-2500cd/m
- ◆Using LED backlight, life span of more than 50,000 hours, environmental protection and energy saving, high dynamic contrast, clearer display
- ◆The overall outdoor structure reaches IP65 waterproof and dustproof
- ◆The design adopts a variety of installation methods, floor installation or customized installation
- ◆Using high light-transmitting glass to improve the visibility of the display, AR anti-glare can get clearer picture quality in the sun
- ◆Using the metal shell of galvanized steel plate, and with outdoor anti-rust powder, outdoor anti-corrosion can reach 7 years

Face Recognition Temperature

Face recognition panel machine plus temperature measurement module solution, based on artificial intelligence algorithm and deep learning framework combined with infrared temperature measurement technology, provides solutions for low- and medium-density crowd scenarios, which can effectively alleviate the temperature measurement due to the lack of face exposure during the epidemic. The system supports integrated deployment, the face detection rate reaches 90%, the temperature measurement is accurate to $\pm 0.5^{\circ}\text{C}$, and the pedestrians are accurately matched to the temperature.



Application



PRODUCT FEATURES

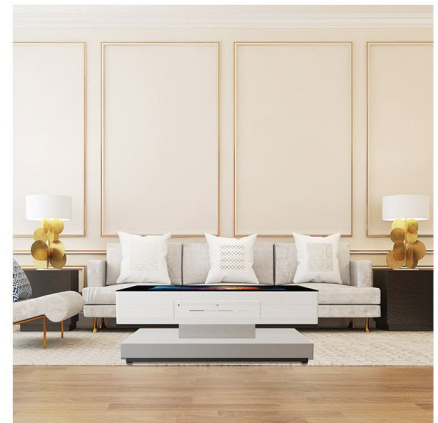
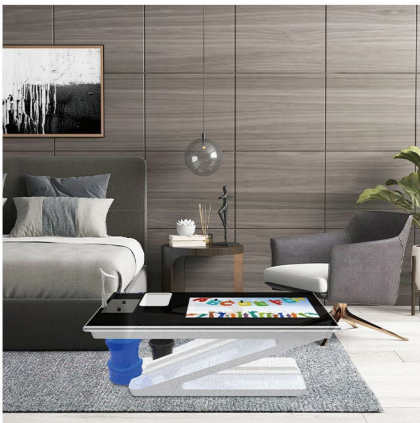
- ◆ Complete temperature measurement through non-contact face brushing, avoid cross-infection, quickly complete temperature measurement, avoid waiting for the accumulation of temperature measurement, and reduce risk.
- ◆ It adopts the method of timed active attendance and body temperature verification, and has the ability of face recognition and comparison under the mask model, and the temperature data is located on the person and reported regularly.
- ◆ Support temperature measurement/person identification + temperature measurement and other modes, can bind face and ID information, real-time data recording, single-machine export, network analysis, convenient for backtracking, and get rid of the trouble of manual recording.
- ◆ Intelligent anthropomorphic voice reminder module, once the device monitors and finds an abnormal body temperature, it will immediately issue a voice alarm to improve the efficiency of epidemic detection.

Digital Table

The LCD splicing large-screen display system is widely used in various industry terminal display projects, professional-level customized software, using an embedded processing system to flexibly manage the information processing and power supply of each unit screen, and realize the communication between each unit display through the serial port ; Adopting signal parallel processing technology, effectively increasing the amount of input signals, greatly improving the speed of the system, effectively realizing multi-signal input, far surpassing ordinary industrial computer equipment, and being more intelligent, humanized and customized to meet the special needs of customers.



Application



PRODUCT FEATURES

- ◆ Full metal shell, arc design, safe and reliable, sturdy and durable
- ◆ Beautiful and fashionable: the model structure is professionally designed, made of high-grade materials and specially opened molds
- ◆ Appearance color: black/silver/gold/white/red, etc.
- ◆ Optional solutions: Android, 1037, i3, i5, i7
- ◆ Product size: 21.5 inches to 84 inches
- ◆ Touch mode: infrared, capacitance, nanometer
- ◆ Customizable appearance

Advertising Player With Hand Sanitizer

The multimedia information release system is a high-definition multimedia display technology that uses the display screen to display corporate publicity and real-time notifications in all directions. The system combines audio and video, TV pictures, pictures, animations, texts, documents, web pages, streaming media, database data, etc. into a section of wonderful programs, and pushes the produced programs to media distributed in various places through the network in real time. The display terminal can perfectly display the wonderful pictures and real-time information in various designated places in front of the people who need it.

Application



PRODUCT FEATURES

- ◆ Rockchip RK3288, quad-core ARM Cortex-A17, clocked at 1.8GHz, ARM Mali-T764, embedded high-performance 2D acceleration hardware
- ◆ 1080P multiple format video decoding (H.265, H.264, VC-1, MPEG-1/2/4, VP8), support all mainstream media formats
- ◆ 1 LVDS video output, 4 USB HOST, 1 USB OTG, 2 TTL serial ports, 1 TF card slot for storage expansion. Support function expansion, standard 5-channel GPIO interface (SPI mode, I2S mode can be configured according to requirements)
- ◆ Support wired, WiFi, 3G/4G network access (requires external USB expansion module), which can realize multi-network hybrid group