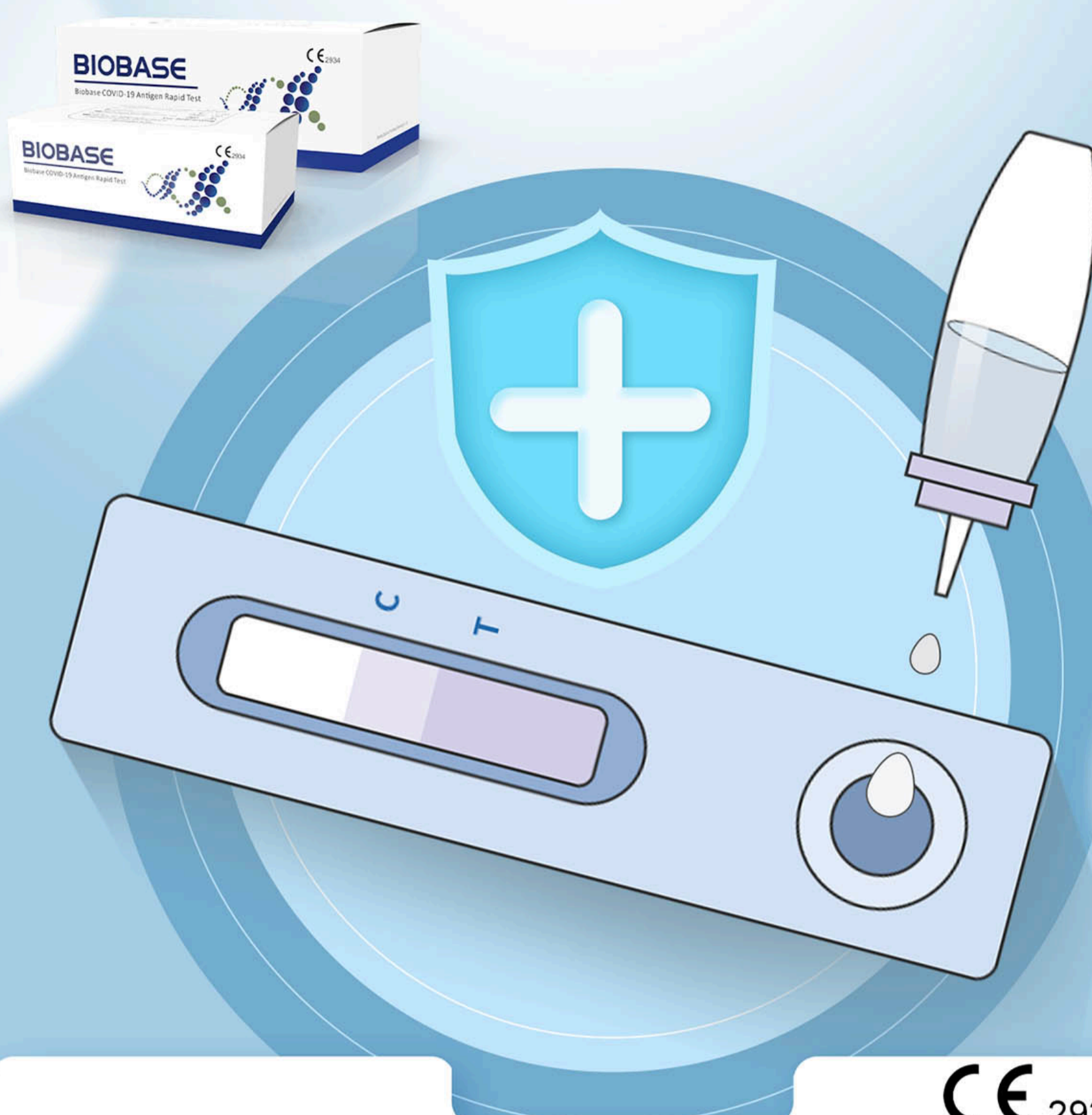


# BIOBASE COVID-19 Antigen Rapid Test Self-Testing



CE 2934





## COVID-19 Antigen Rapid Test Introduction



### Feature

- \* Sterile swabs.
- \* Rapid detection :15 minutes out of the results.
- \* Sensitivity:92.73%
- \* Specificity:98.44%
- \* Quick in-home testing takes away the worry of developing symptoms.

### Technical Parameters

KIT CONTENTS					
		COVID-19 Test Card in Pouch	1 Sample extraction buffer tube	1 Swab	Instructions
Specification/Qty	1 Tests/kit	1	1	1	Included
	10 Tests/kit	10	10	10	
	20 Tests/kit	20	20	20	
	25 Tests/kit	25	25	25	

## Steps for Usage

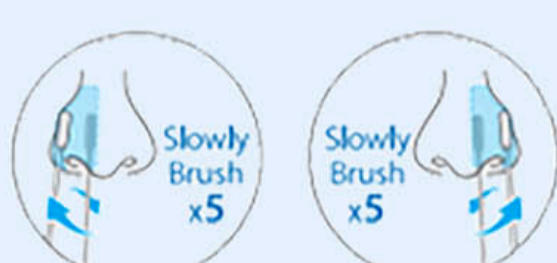
### Preparation



Wash your hands.



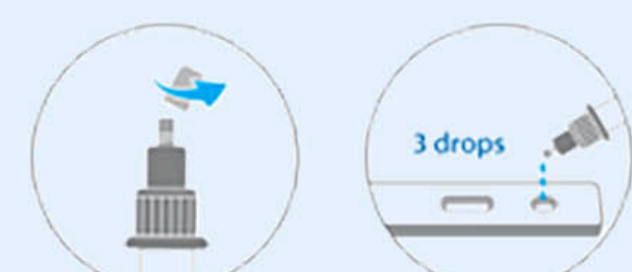
Take them out.



Sampling using nasal swabs.



Mix well.



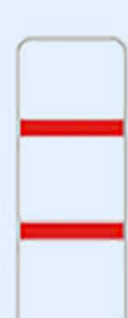
Drip onto the test card.



Wait 15 minutes.

#### Results of Judgment:

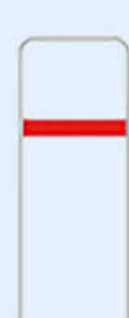
- Positive: T-line and C-line present within 15-20 minutes after sample addition.
- Negative: Only C-line, no T-line, occurs within 15-20 minutes after dropping the sample.
- Invalid: As long as there is no line C, this test card is invalid. Please use another test card to retest.



Positive



Positive



Negative



Invalid



Invalid

C  
T