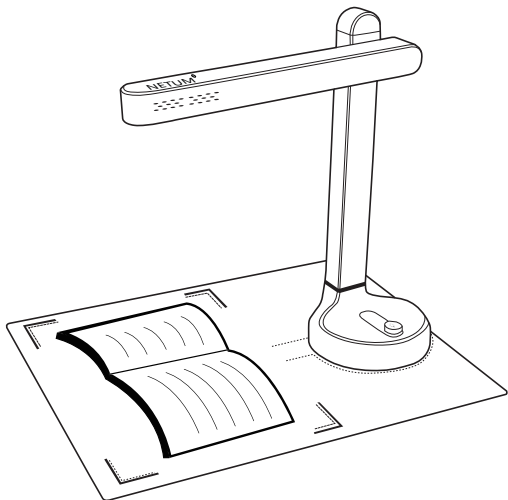


# **SD-3000NC**

## **Document Camera**



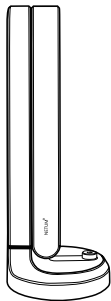
### **Quick Guide**

<https://www.netum.net/>

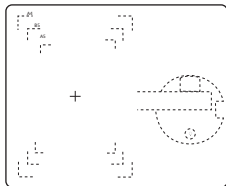
## Overview

Before use, make sure the following items are included in the package. If anything is missing, contact the retailer where you purchased the SD-3000NC product.

1



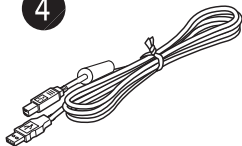
2



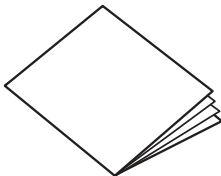
3



4

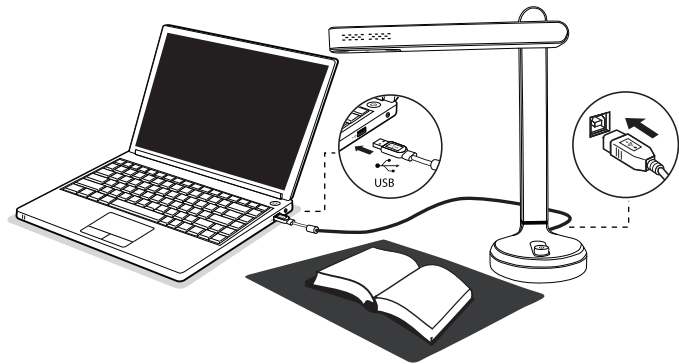


5



## Hardware Installation

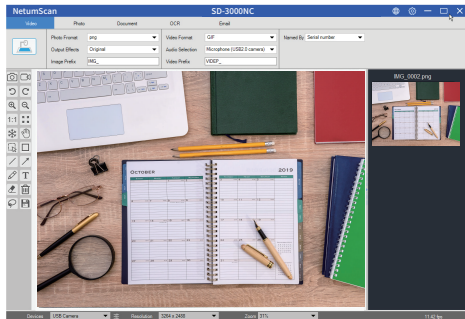
1. Plug the supplied USB cable to the back of the SD-3000NC and connect other end into an available USB port on your computer.



2 . SD-3000NC will connect automatically to your computer. ( SD-3000NC is a driverless device used with Windows 10 , 8 . 7 , Vista or XP operating systems. Your computer will recognize the device under the Cameras in the Windows Device Manager menu.)

## Getting Started

1. Scan QR code or use below link to download the NetumScan Pro Software.  
<https://www.netum.net/pages/netumscan-document-camera-setup-guide>
2. To start the program, please double click on the NetumScan Pro Software icon on the desktop or click Start Menu Windows icon then [ All apps ] to select NetumScan Pro Software.
3. Place a document on the position pad and align to position mark.
4. Select one of the function to scan your material from the main menu. You can make changes for your preferences in the settings menu and then click [ Scan ] button for scan a document .

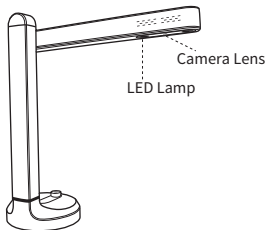
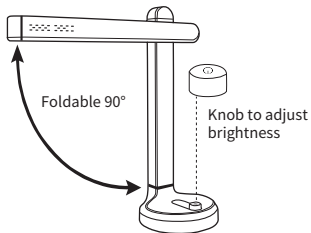




## Software Functions

Function Modes	Descriptions
<b>Video</b>	The Video mode is using for record video clip and save to different video formats with Motion JPEG compression You can even use the video mode as a Visualizer
<b>Photo</b>	The Photocopy mode is using for scan documents and print them to a printer. ( NOTE: Need to work with a separate printer )
<b>Document</b>	The Document mode is using for scan documents , name cards, ID cards or any paper sheets to JPEG or PDF files.
<b>OCRE</b>	The OCR mode can convert the scanned files into editable Word/Text/Excel formats
<b>Mail</b>	The E-mail mode is using for scan and save result Into PDF or JPEG files, and then send these files through E-mail

## Parts Descriptions



**Note:**

Please do not hesitate to contact us if you need any other configurations.

**Contact Information**

Tel.: +0086 20-3222-8813

EU Email: [service@netum.net](mailto:service@netum.net)

US/JP Email: [support@netum.net](mailto:support@netum.net)

Addr.: Room 301, 6th Floor and full 3rd Floor, Building 1, No. 51  
Xiangshan Avenue, Ningxi Street, Zengcheng District, Guangzhou,  
Guangdong, China/ 511356

Website: <https://www.netum.net/>

Made in China

Name: APEX CE SPECIALISTS LIMITED

Add: UNIT 3D NORTH POINT HOUSE, NORTH POINT BUSINESS  
PARK, NEW MALLOW  
ROAD, CORK, T23 AT2P, IRELAND