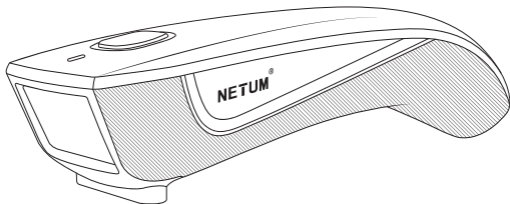


NETUM[®]

NFC & RFID Reader/Writer

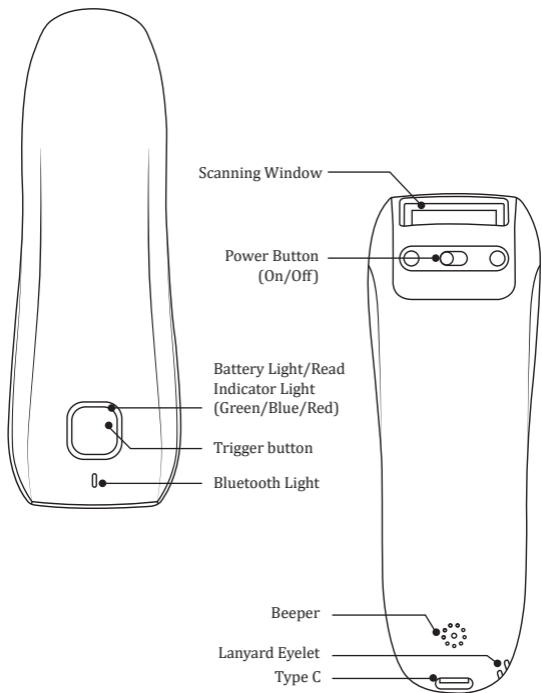


Package Included:

- 1PC X Reader;
- 1PC X USB Cable;
- 1PC X Quick Setup Guide

Note: This is a general manual. If you need a full manual please download it from our official website: www.netum.net

1.Product Information



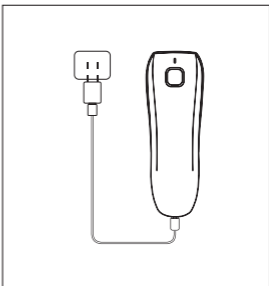
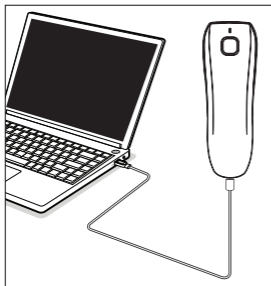
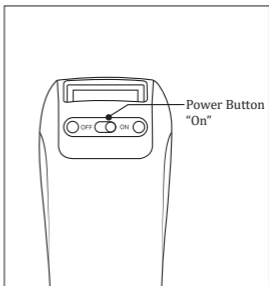
2. Charge the battery

- 1). Turn it On
- 2). Connect reader with your computer via USB cable (provided by Netum) or take a DC plug and charge it on an electrical wall outlet.

Red Light On: Charging

Red Light Off: Fully charged

▲ DC Plug: V:5V; A>500mA



3.Factory Reset

By following below steps will reset the reader.

Disconnect the USB cable→ switch power button to Off → press and hold the button meanwhile switch it to ON →Hold on it for at least 15 seconds, release it after you heard 1 beep

For more configurations please download the software from below address:

<https://www.netum.net/pages/netum-rfid-para-setting-software>

▲Please program the reader in windows device. Currently it's only compatible with windows.

4.Reading Tags

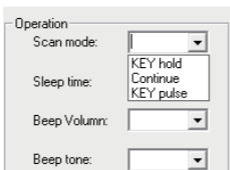
1) Connet the reader with your device via USB cable or bluetooth (refer to Connection Way section).

2) Hold the reader on the card, tag or smart device to be read.

3) For best results, card, tag, or smart device should be parallel to the reader.

4) Press the trigger button momentarily; blue led light will be on with a short beep to indicate a successful scan.

► If you want to change it to continuous scan mode, please download the software and refer to scan mode in the Para Setting page.



Operation

Scan mode:

Sleep time:
Continue
KEY pulse

Beep Volume:

Beep tone:

Important Notes:

1)Key Delay Mode was set by default, press the button, green led light will be on and off in 3s if it hasn't read any cards .

2) If the reader fails to connect to your device via USB cable or bluetooth, scanned characters will be stored in the reader. Once it's connected with your device, pressing the button for 5 seconds, scanned characters will be uploaded and then been cleared.

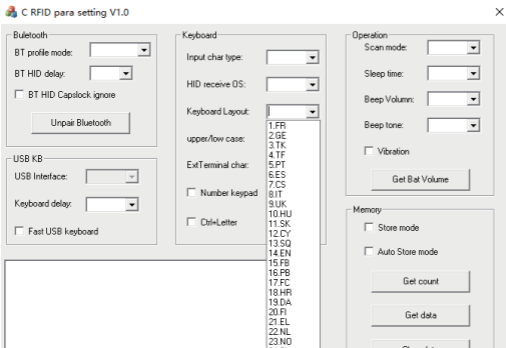
5.Connection Way

The reader can be connected to your device via bluetooth, or USB cable. Choose either way to get started.

1)USB Cable Connection

Get Started: Connect reader with your device via USB cable. If you use US keyboard, it's plug and play. If you use other type of keyboard, please configure the keyboard language in below software before using it.

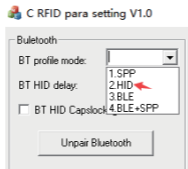
► Open the software →C RFID Para Setting→ Keyboard layout



2)BLUETOOTH CONNECTION

- **Bluetooth HID Mode:**

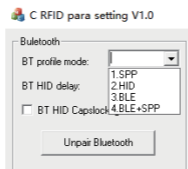
► Open the software →Para Setting page→ BT Profile Mode →HID



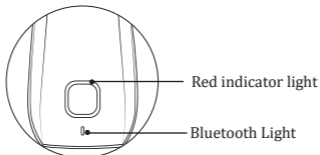
- **Serial Port Profile (SPP) / Apple Specific Serial Profile (BLE) Mode:**

If you have an application that supports SPP or BLE this is the mode recommended.

► Open the software →Para Setting page→ BT Profile Mode



6.LED Activity/Prompt Tone /Indication under different Connections :



Indication	Bluetooth LED Light Status	Indicator LED light Status			Beep Pattern	Working Mode
		Red	Green	Blue		
Bluetooth Unpaired	Blue Led flashing slow					Bluetooth HID Mode
Bluetooth Unpaired	Blue Led flashing quickly					Bluetooth SPP/ BLE Mode
Bluetooth Pairing	Blue Led flashing quickly and off in 30s if a connection haven't been made					
Bluetooth paired	Blue Led on and in solid blue					
RFID searching for cards			ON			
Charging power/ Full charged		ON/OFF				
Low power warning, power volume less than 20%		Red led flashing slowly				
Low power warning, power volume less than 10%		Red led flashing quickly				
Power On/Bluetooth Paired/ data uploaded				Blue LED on and then off (in 0.3s)	1 long beep in 3 tones	
Successful Scan				Blue LED on and then off (in 0.1s)	1 short beep	
Bluetooth unpaired/ successful scan in low power		Red Led flash twice			2 beeps	
Data transmit failed		Red Led flashing three times			3 beeps	
Fail to turn the reader on		Red Led flashing five times			5 beeps	

Note:

Please do not hesitate to contact us if you have any inquiries.

Contact Information

Tel.: +0086 20-3222-8813

Whatsapp: +86 188 2626 1132

Email: service@netum.net

Addr.: Room 301, 6th Floor and full 3rd Floor, Building 1, No. 51 Xiangshan Avenue,

Ningxi Street, Zengcheng District, Guangzhou City, Guangdong Province, China

Name: APEX CE SPECIALISTS LIMITED

Add: UNIT 3D NORTH POINT HOUSE, NORTH POINT BUSINESS PARK, NEW MALLOW

ROAD, CORK, T23 AT2P, IRELAND

Contact: Wells

Tel: +353212066339

E-Mail: Info@apex-ce.com

Made in China