



SpolarPV

Tel: +(86) 25 58351206 Fax: +(86) 25 58351206

Email: info@spolarpv.com sales@spolarpv.com

www.spolarpv.com



Global Sales and Marketing Centre:

Greenland Building 505, Jiangnan Road 2, Yuhuatai District, Nanjing City, Jiangsu Province, China.

Global T&D Center:

Industriestrasse 3, CH-4805 Brittnau.

Tel: (00) 41 41 500 5151

Production Base:

Maoshan Road 39, Gaochun Economic Development Zone, Nanjing City, Jiangsu Province, China.

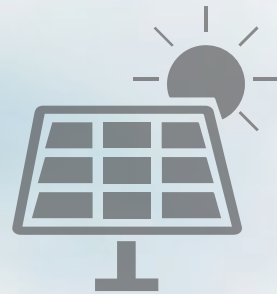


SpolarPV

Easy Invest, More Returns



SpolarPV
Technology Co.,Ltd



SUPERIOR PRODUCTS
PREMIUM SERVICES

OUR PHILOSOPHY

Sincerity

Sincerity is the basement of a company. We always have the faith that sincerity will finally take us to customers' heart.

Innovation

Innovation is the life of a company. SpolarPV has built a professional International R&D team consisting of 50 solar experts from multiple countries. The new Technical&Development Center in Switzerland was founded in 2020, focusing on providing innovative products and service to all customers globally.

Responsibility

Responsibility is the soul of a company. The responsibility to customers, the responsibility to employees, the responsibility to society, all of these make a company respectable and live long.

COMPANY PROFILE

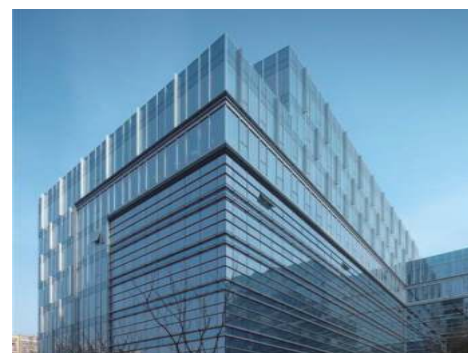
“ SpolarPV Co., Ltd, located in Nanjing-China, was established in 2010. The company's current annual capacity is 500MW of solar modules and 100MW of solar cells, and planing to expand to 1GW and 500MW respectively in 2020.

As a High&New Technology Enterprise, SpolarPV has established a provincial-level Photovoltaic Research Lab in cooperation with Nanjing University. Meanwhile, the company has obtained a series of professional certifications, including TUV, VDE, CE, CQC, ISO9001, ISO14001, etc.

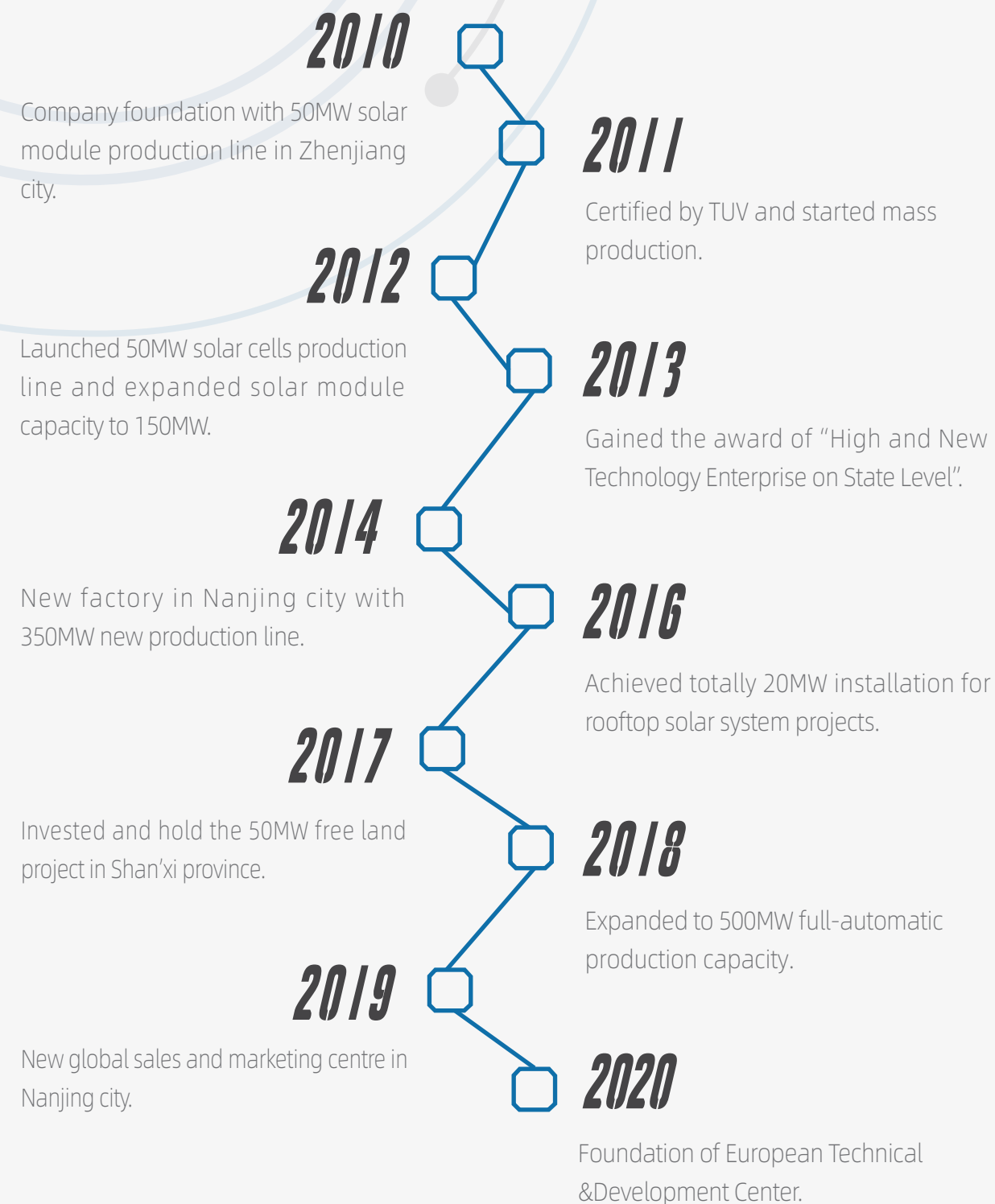
SpolarPV is always committed to providing all customers with the highest-quality and most cost-effective products in a timely manner.

The new Technical&Development Center in Switzerland was founded in 2020. It focuses on providing innovative products and service to all customers globally, and has made a great breakthrough on the implementation of new type of BIPV solar modules in Switzerland.

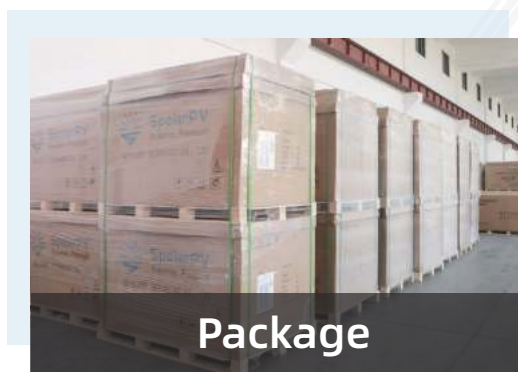
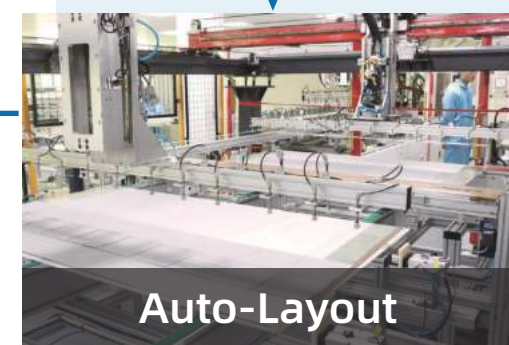
”



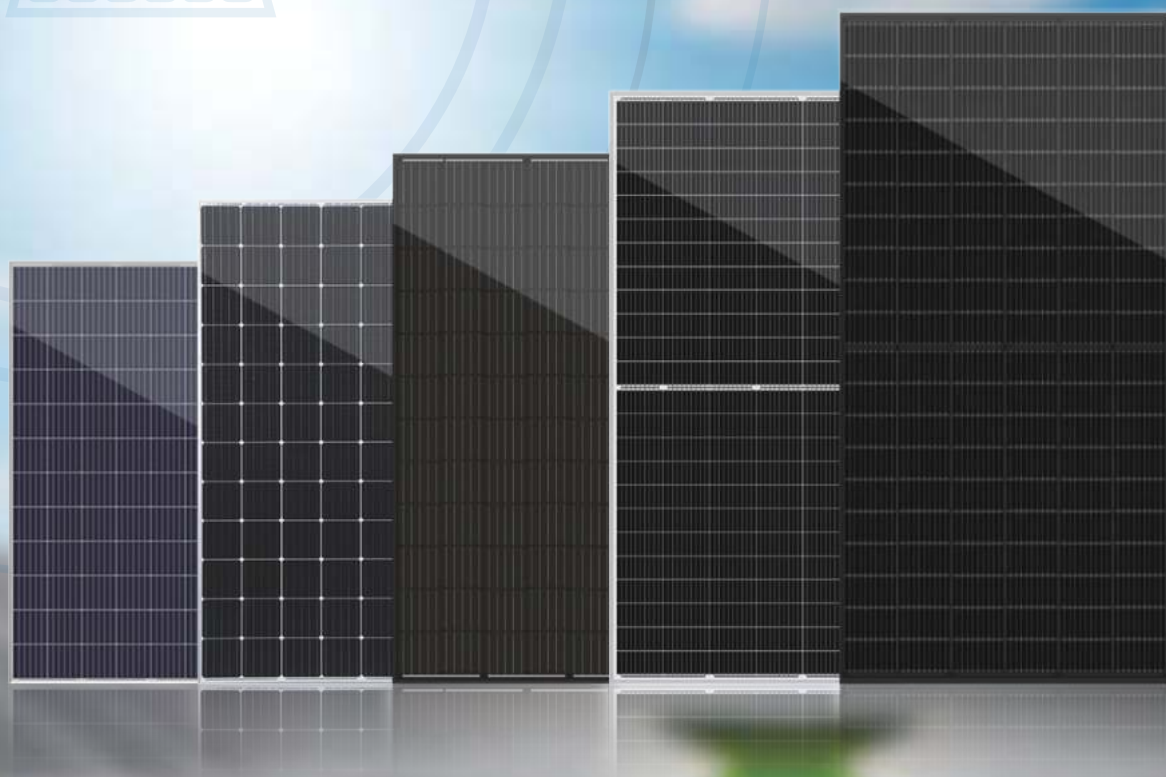
DEVELOPMENT HISTORY



WORKSHOP VIEW



PRODUCT TECHNOLOGY



High Efficiency

Higher module conversion efficiency benefit from Passivated Emitter Rear Contact (PERC) technology.



PID Resistant

Excellent Anti-PID performance guarantee limited power degradation for mass production.



Low-light Performance

Advanced glass and cell surface texture design ensure excellent performance in low light environment.



Severe Weather Resilience

Certified to withstand: wind load (2400 Pascal) and snow load (5400 Pascal).



Durability against extreme environmental conditions

High salt mist and ammonia resistance.

FULL/ULTRO BLACK MODULE

Single Glass/Double Glass



MONO CRYSTALLINE HALF CELL MODULE

340 / 415 / 455 Watt



MONO CRYSTALLINE MODULE

335 / 400 Watt



POLY CRYSTALLINE MODULE

290 / 345 Watt



PROJECT REFERENCE

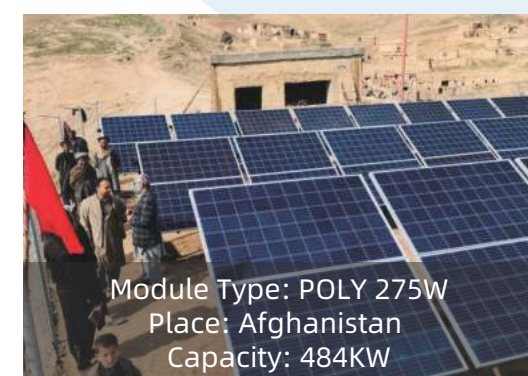
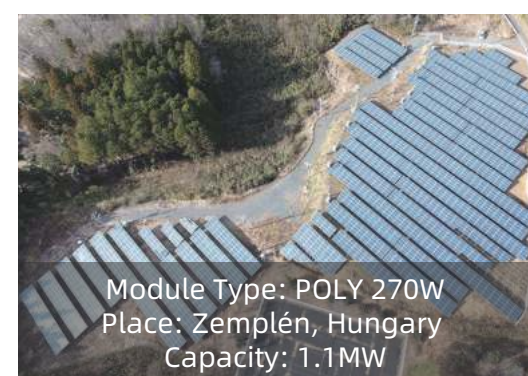
Residential



Industrial & Commercial



Ground-mounted



Contact us

Tel: +(86) 25 58351206
Email: info@spolarpv.com
www.spolarpv.com

Fax: +(86) 25 58351206
sales@spolarpv.com

Global Sales and Marketing Centre:
Greenland Building 505, Jiangnan Road 2, Yuhuatai District, Nanjing City, Jiangsu Province, China.

Global T&D Center:
Industriestrasse 3, CH-4805 Brittnau. Tel: (00) 41 41 500 5151

Production Base:
Maoshan Road 39, Gaochun Economic Development Zone, Nanjing City, Jiangsu Province, China.