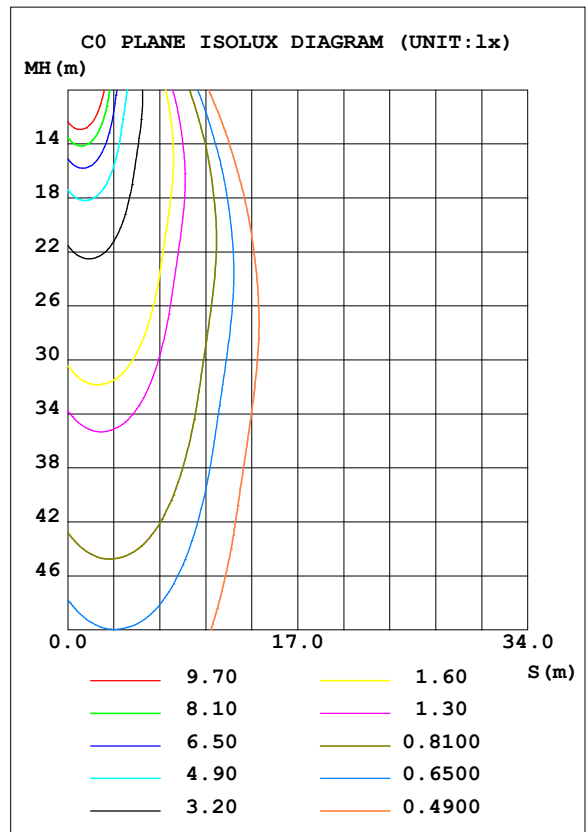
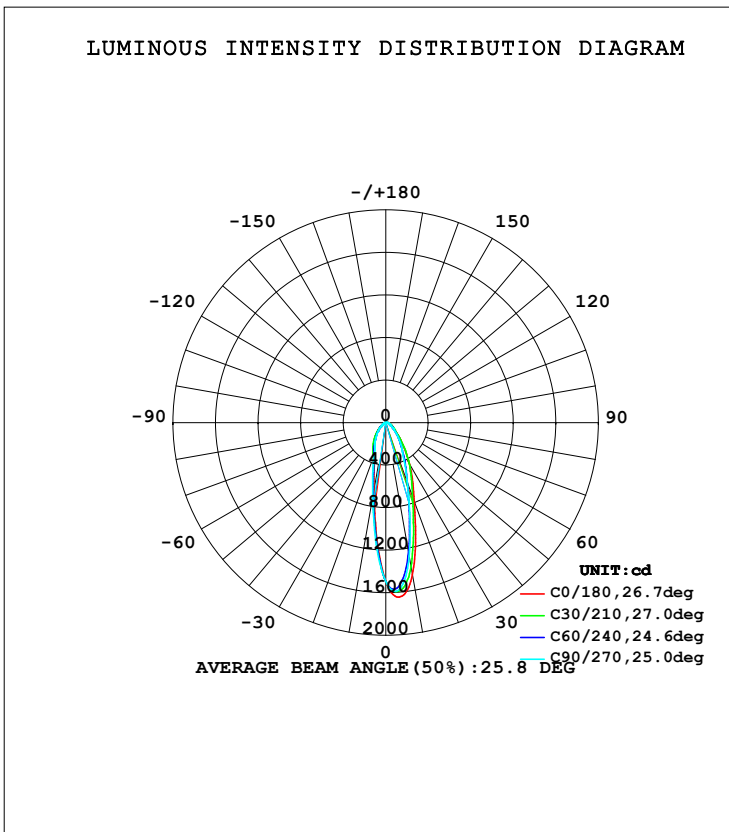


LUMINAIRE PHOTOMETRIC TEST REPORT

NAME: 折叠灯10W-4000K-2835	TYPE:	WEIGHT:
SPEC.:	DIM.:	SERIAL No.:
MFR.: EVERFINE	SUR.:	PROTECTION ANGLE:

DATA OF LAMP		PHOTOMETRIC DATA Eff: 80.03 lm/W			
MODEL		I _{max} (cd)	1645	S/MH (C0/180)	0.66
NOMINAL POWER (W)	10	LOR (%)	83.0	S/MH (C90/270)	0.56
RATED VOLTAGE (V)	220	TOTAL FLUX (lm)	830.47	<input type="checkbox"/> UP, DN (C0-180)	0.8, 47.8
NOMINAL FLUX (lm)	750	CIE CLASS	DIRECT	<input type="checkbox"/> UP, DN (C180-360)	0.6, 33.9
LAMPS INSIDE	1	<input type="checkbox"/> up (%)	1.4	CIBSE SHR NOM	0.50
TEST VOLTAGE (V)	220.8	<input type="checkbox"/> down (%)	81.7	CIBSE SHR MAX	0.50



C Range: 0 - 360DEG
 C Interval: 30.0DEG
 Test Speed: HIGH
 Temperature: 25.3DEG
 Operators: DAMIN
 Test Date: 2021-08-06

Range: 0 - 180DEG
 Interval: 0.5DEG
 Test System: EVERFINE GO-2000B_V1 SYSTEM V2.0.281
 Humidity: 65.0%
 Test Distance: 8.000m [K=1.0000]
 Remarks:

ZONAL FLUX DIAGRAM

ZONAL FLUX DIAGRAM:

mm	C0	C45	C90	C135	C180	C225	C270	C315	mm	zone	total	%lum,lamp
5	1642	1556	1565	1273	1043	1077	1106	1365	0- 5	33.58	33.58	4.04,3.36
10	1449	1303	1275	865.6	643.3	679.3	715.2	1020	5- 10	81.57	115.2	13.9,11.5
15	1088	932.7	876.1	554.2	429.7	450.7	474.1	695.3	10- 15	96.26	211.4	25.5,21.1
20	785.3	664.9	592.9	383.0	328.5	338.1	317.8	498.8	15- 20	93.32	304.7	36.7,30.5
25	597.2	504.7	423.2	296.1	272.1	274.7	245.8	361.4	20- 25	87.78	392.5	47.3,39.3
30	446.4	381.1	315.7	238.5	224.2	219.6	201.5	270.6	25- 30	81.55	474.1	57.1,47.4
35	321.6	283.9	249.7	190.0	180.6	174.4	155.9	202.0	30- 35	73.11	547.2	65.9,54.7
40	226.4	205.9	187.3	150.5	139.6	135.8	120.4	147.5	35- 40	62.80	610.0	73.4,61
45	159.8	150.7	138.4	113.4	103.6	102.5	92.43	104.7	40- 45	51.81	661.8	79.7,66.2
50	113.0	106.3	99.82	82.02	74.12	74.57	68.25	75.21	45- 50	41.01	702.8	84.6,70.3
55	80.43	77.67	75.94	59.58	52.53	52.91	48.46	54.42	50- 55	31.82	734.6	88.5,73.5
60	59.72	54.15	55.04	42.46	38.63	38.82	35.77	39.56	55- 60	24.35	759.0	91.4,75.9
65	44.85	41.07	40.39	31.02	28.64	29.45	23.45	29.97	60- 65	18.81	777.8	93.7,77.8
70	36.04	32.22	27.84	22.70	20.64	20.73	17.31	21.92	65- 70	14.62	792.4	95.4,79.2
75	28.21	23.31	19.23	15.23	13.52	15.27	11.29	16.39	70- 75	10.95	803.3	96.7,80.3
80	20.78	17.73	13.74	9.755	6.229	7.813	4.180	9.507	75- 80	7.803	811.1	97.7,81.1
85	11.72	8.986	6.437	4.255	1.437	2.510	1.092	2.730	80- 85	4.228	815.4	98.2,81.5
90	2.059	2.785	2.066	1.615	0.9654	1.982	1.039	0.9893	85- 90	1.617	817.0	98.4,81.7
95	1.790	2.422	1.788	1.622	0.8789	1.667	0.9575	0.9549	90- 95	0.8818	817.9	98.5,81.8
100	1.767	2.352	1.787	1.644	0.8624	1.436	0.9044	0.8991	95-100	0.8240	818.7	98.6,81.9
105	1.765	2.308	1.801	1.683	0.9148	1.315	0.9107	0.8712	100-105	0.7923	819.5	98.7,81.9
110	1.780	2.252	1.420	1.761	1.049	1.282	0.9939	0.8840	105-110	0.7572	820.2	98.8,82
115	1.841	2.222	1.831	1.893	1.262	1.338	1.161	0.9662	110-115	0.7700	821.0	98.9,82.1
120	1.963	2.352	1.964	2.081	1.499	1.487	1.364	1.108	115-120	0.7995	821.8	99,82.2
125	2.156	2.543	1.943	2.329	1.787	1.715	1.601	1.275	120-125	0.8462	822.6	99.1,82.3
130	2.408	2.762	2.378	2.602	2.137	2.012	1.918	1.489	125-130	0.8881	823.5	99.2,82.4
135	2.696	2.949	2.848	2.855	2.551	2.374	2.317	1.768	130-135	0.9565	824.5	99.3,82.4
140	2.972	3.142	3.113	3.057	3.029	2.804	2.769	2.119	135-140	0.9900	825.5	99.4,82.5
145	3.208	3.338	3.329	3.204	3.494	3.249	3.222	2.541	140-145	1.000	826.5	99.5,82.6
150	3.413	3.499	3.488	3.310	3.832	3.580	3.605	2.999	145-150	0.9676	827.4	99.6,82.7
155	3.575	3.636	3.622	3.390	3.905	3.726	3.793	3.350	150-155	0.8886	828.3	99.7,82.8
160	3.709	3.742	3.712	3.449	3.843	3.705	3.805	3.521	155-160	0.7604	829.1	99.8,82.9
165	3.796	3.820	3.751	3.469	3.761	3.631	3.720	3.545	160-165	0.6033	829.7	99.9,83
170	3.844	3.854	3.740	3.459	3.690	3.563	3.610	3.485	165-170	0.4329	830.1	100,83
175	3.836	3.807	3.691	3.413	3.698	3.574	3.615	3.421	170-175	0.2586	830.4	100,83
180	3.757	3.717	3.699	3.406	3.784	3.645	3.699	3.421	175-180	0.0861	830.5	100,83
DEG	LUMINOUS INTENSITY:cd								UNIT:lm			

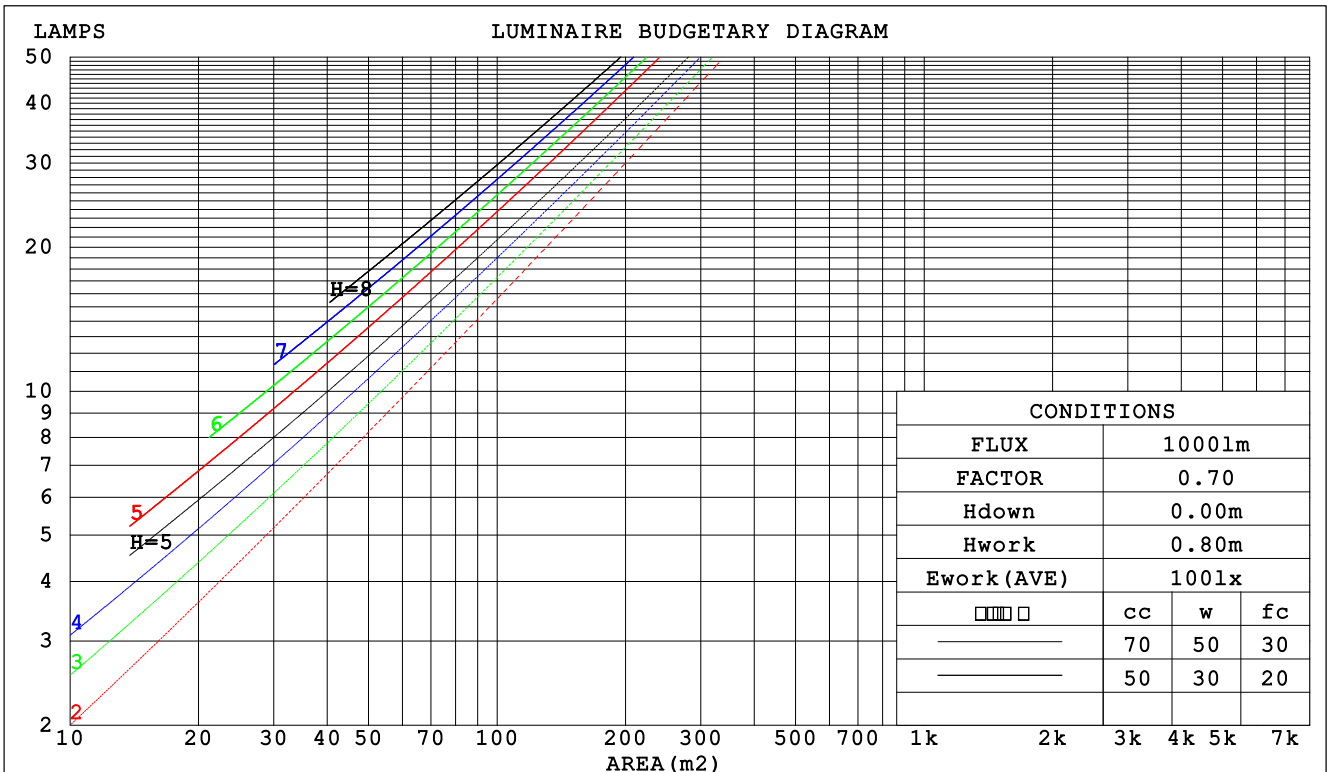
C Range: 0 - 360DEG
 C Interval: 30.0DEG
 Test Speed: HIGH
 Temperature:25.3DEG
 Operators:DAMIN
 Test Date:2021-08-06

□ Range: 0 - 180DEG
 □ Interval: 0.5DEG
 Test System:EVERFINE GO-2000B_V1 SYSTEM V2.0.281
 Humidity:65.0%
 Test Distance:8.000m [K=1.0000]
 Remarks:

CU AND LUMINAIRE BUDGETARY ESTIMATE DIAGRAM

NAME: 折叠灯10W-4000K-2835	TYPE:	WEIGHT:
SPEC.:	DIM.:	SERIAL No.:
MFR.: EVERFINE	SUR.:	PROTECTION ANGLE:

□cc	80%			70%			50%			30%			10%			0
□w	50%	30%	10%	50%	30%	10%	50%	30%	10%	50%	30%	10%	50%	30%	10%	0
□fc	20%			20%			20%			20%			20%			0
RCR	RCR:Room Cavity Ratio						Coefficients of Utilization(CU)									
0.0	.99	.99	.99	.96	.96	.96	.92	.92	.92	.87	.87	.87	.84	.84	.84	.82
1.0	.90	.87	.85	.88	.86	.84	.84	.83	.81	.81	.80	.78	.78	.77	.76	.74
2.0	.82	.78	.75	.81	.77	.74	.78	.75	.72	.75	.72	.70	.72	.70	.69	.67
3.0	.76	.71	.67	.74	.70	.66	.72	.68	.65	.70	.66	.64	.67	.65	.63	.61
4.0	.70	.64	.60	.69	.64	.60	.67	.62	.59	.65	.61	.58	.63	.60	.57	.56
5.0	.65	.59	.55	.64	.59	.55	.62	.58	.54	.61	.57	.54	.59	.56	.53	.52
6.0	.60	.55	.51	.60	.54	.51	.58	.54	.50	.57	.53	.50	.56	.52	.49	.48
7.0	.57	.51	.47	.56	.51	.47	.55	.50	.47	.54	.49	.46	.53	.49	.46	.45
8.0	.53	.48	.44	.53	.48	.44	.52	.47	.44	.51	.46	.43	.50	.46	.43	.42
9.0	.50	.45	.41	.50	.45	.41	.49	.44	.41	.48	.44	.41	.47	.43	.41	.39
10.0	.48	.42	.39	.47	.42	.39	.46	.42	.39	.46	.41	.39	.45	.41	.38	.37



C Range: 0 - 360DEG
 C Interval: 30.0DEG
 Test Speed: HIGH
 Temperature: 25.3DEG
 Operators: DAMIN
 Test Date: 2021-08-06

□ Range: 0 - 180DEG
 □ Interval: 0.5DEG
 Test System: EVERFINE GO-2000B_V1 SYSTEM V2.0.281
 Humidity: 65.0%
 Test Distance: 8.000m [K=1.0000]
 Remarks:

WEC AND CCEC

NAME: 折叠灯10W-4000K-2835	TYPE:	WEIGHT:
SPEC.:	DIM.:	SERIAL No.:
MFR.: EVERFINE	SUR.:	PROTECTION ANGLE:

<input type="checkbox"/> cc	80%	70%	50%	30%	10%	0
<input type="checkbox"/> w	50% 30% 10%	50% 30% 10%	50% 30% 10%	50% 30% 10%	50% 30% 10%	0
<input type="checkbox"/> fc	20%	20%	20%	20%	20%	0
RCR	RCR:Room Cavity Ratio		Wall Exitance Coefficients (WEC)			
0.0						
1.0	.180 .102 .032	.174 .099 .032	.163 .093 .030	.152 .088 .028	.143 .083 .027	
2.0	.171 .094 .029	.166 .091 .028	.156 .087 .027	.147 .082 .026	.138 .078 .025	
3.0	.160 .085 .026	.156 .083 .025	.147 .080 .024	.139 .076 .023	.132 .073 .023	
4.0	.150 .078 .023	.146 .077 .023	.139 .074 .022	.132 .071 .021	.126 .068 .021	
5.0	.141 .072 .021	.138 .071 .021	.131 .068 .020	.125 .066 .020	.119 .064 .019	
6.0	.133 .067 .019	.130 .065 .019	.124 .063 .018	.118 .062 .018	.113 .060 .018	
7.0	.125 .062 .018	.122 .061 .017	.117 .059 .017	.112 .058 .017	.108 .056 .016	
8.0	.118 .058 .016	.116 .057 .016	.111 .056 .016	.107 .054 .016	.103 .053 .015	
9.0	.112 .054 .015	.110 .054 .015	.106 .052 .015	.102 .051 .015	.098 .050 .014	
10.0	.107 .051 .014	.105 .051 .014	.101 .049 .014	.097 .048 .014	.094 .047 .014	

<input type="checkbox"/> cc	80%	70%	50%	30%	10%	0
<input type="checkbox"/> w	50% 30% 10%	50% 30% 10%	50% 30% 10%	50% 30% 10%	50% 30% 10%	0
<input type="checkbox"/> fc	20%	20%	20%	20%	20%	0
RCR	RCR:Room Cavity Ratio		Ceiling Cavity Exitance Coefficients (CCEC)			
0.0	.168 .168 .168	.144 .144 .144	.098 .098 .098	.056 .056 .056	.018 .018 .018	
1.0	.155 .141 .128	.132 .121 .110	.091 .083 .076	.052 .048 .044	.017 .015 .014	
2.0	.144 .120 .100	.123 .104 .087	.084 .072 .061	.049 .042 .036	.016 .013 .012	
3.0	.135 .105 .081	.116 .091 .070	.079 .063 .049	.046 .037 .029	.015 .012 .010	
4.0	.127 .093 .067	.109 .080 .059	.075 .056 .041	.043 .033 .024	.014 .011 .008	
5.0	.120 .084 .057	.103 .073 .050	.071 .051 .035	.041 .030 .021	.013 .010 .007	
6.0	.114 .076 .050	.098 .066 .043	.067 .046 .031	.039 .027 .018	.013 .009 .006	
7.0	.108 .070 .044	.093 .061 .038	.064 .043 .027	.037 .025 .016	.012 .008 .005	
8.0	.103 .065 .039	.089 .056 .034	.061 .040 .024	.036 .023 .014	.012 .008 .005	
9.0	.098 .061 .035	.085 .053 .031	.059 .037 .022	.034 .022 .013	.011 .007 .004	
10.0	.094 .057 .032	.081 .050 .028	.056 .035 .020	.033 .021 .012	.011 .007 .004	

C Range: 0 - 360DEG
 C Interval: 30.0DEG
 Test Speed: HIGH
 Temperature:25.3DEG
 Operators:DAMIN
 Test Date:2021-08-06

Range: 0 - 180DEG
 Interval: 0.5DEG
 Test System:EVERFINE GO-2000B_V1 SYSTEM V2.0.281
 Humidity:65.0%
 Test Distance:8.000m [K=1.0000]
 Remarks:

Uncorrected UGR Table

NAME: 折叠灯10W-4000K-2835		TYPE:					WEIGHT:				
SPEC.:		DIM.:					SERIAL No.:				
MFR.: EVERFINE		SUR.:					PROTECTION ANGLE:				
ceiling/cavity	0.7	0.7	0.5	0.5	0.3	0.7	0.7	0.5	0.5	0.3	
walls	0.5	0.3	0.5	0.3	0.3	0.5	0.3	0.5	0.3	0.3	
working plane	0.2	0.2	0.2	0.2	0.2	0.2	0.2	0.2	0.2	0.2	
Room dimensions	Viewed crosswise					Viewed endwise					
x = 2H y = 2H	13.0	14.1	13.2	14.3	14.5	11.9	13.0	12.1	13.2	13.4	
3H	13.7	14.7	14.0	15.0	15.2	12.6	13.6	12.9	13.8	14.0	
4H	14.2	15.1	14.5	15.4	15.7	12.8	13.8	13.2	14.0	14.3	
6H	14.7	15.6	15.0	15.8	16.1	13.2	14.0	13.5	14.3	14.6	
8H	14.9	15.8	15.2	16.0	16.4	13.3	14.1	13.6	14.4	14.7	
12H	15.1	15.9	15.4	16.2	16.5	13.3	14.2	13.7	14.5	14.8	
4H 2H	13.1	14.1	13.4	14.3	14.6	12.2	13.1	12.5	13.4	13.6	
3H	14.1	15.0	14.5	15.3	15.6	13.0	13.9	13.4	14.2	14.5	
4H	14.7	15.5	15.1	15.8	16.2	13.4	14.2	13.8	14.5	14.9	
6H	15.4	16.1	15.8	16.4	16.8	13.9	14.6	14.3	14.9	15.3	
8H	15.7	16.3	16.2	16.7	17.1	14.1	14.7	14.5	15.1	15.5	
12H	16.0	16.6	16.4	17.0	17.4	14.2	14.8	14.7	15.2	15.6	
8H 4H	14.9	15.5	15.3	15.9	16.3	13.7	14.3	14.1	14.7	15.1	
6H	15.7	16.3	16.2	16.7	17.1	14.3	14.8	14.8	15.3	15.7	
8H	16.2	16.6	16.7	17.1	17.6	14.6	15.1	15.1	15.5	16.0	
12H	16.6	16.9	17.1	17.4	17.9	14.8	15.2	15.3	15.7	16.2	
12H 4H	14.9	15.4	15.3	15.8	16.3	13.7	14.3	14.2	14.7	15.1	
6H	15.8	16.2	16.3	16.7	17.2	14.4	14.9	14.9	15.3	15.8	
8H	16.3	16.6	16.8	17.1	17.6	14.8	15.1	15.3	15.6	16.1	
Variations with the observer position at spacings:											
S = 1.0H	+ 0.4 / - 0.6					+ 0.5 / - 0.6					
1.5H	+ 0.6 / - 0.3					+ 0.4 / - 0.4					
2.0H	+ 0.9 / - 0.5					+ 1.0 / - 0.7					

CIE Pub.117 Corrected 1000 lm Total Lamp Luminous Flux. (8log(F/F0) = 0.0)

C Range: 0 - 360DEG
 C Interval: 30.0DEG
 Test Speed: HIGH
 Temperature: 25.3DEG
 Operators: DAMIN
 Test Date: 2021-08-06

Range: 0 - 180DEG
 Interval: 0.5DEG
 Test System: EVERFINE GO-2000B_V1 SYSTEM V2.0.281
 Humidity: 65.0%
 Test Distance: 8.000m [K=1.0000]
 Remarks:

UTILIZATION FACTORS TABLE

NAME: 折叠灯10W-4000K-2835	TYPE:	WEIGHT:
SPEC.:	DIM.:	SERIAL No.:
MFR.: EVERFINE	SUR.:	PROTECTION ANGLE:

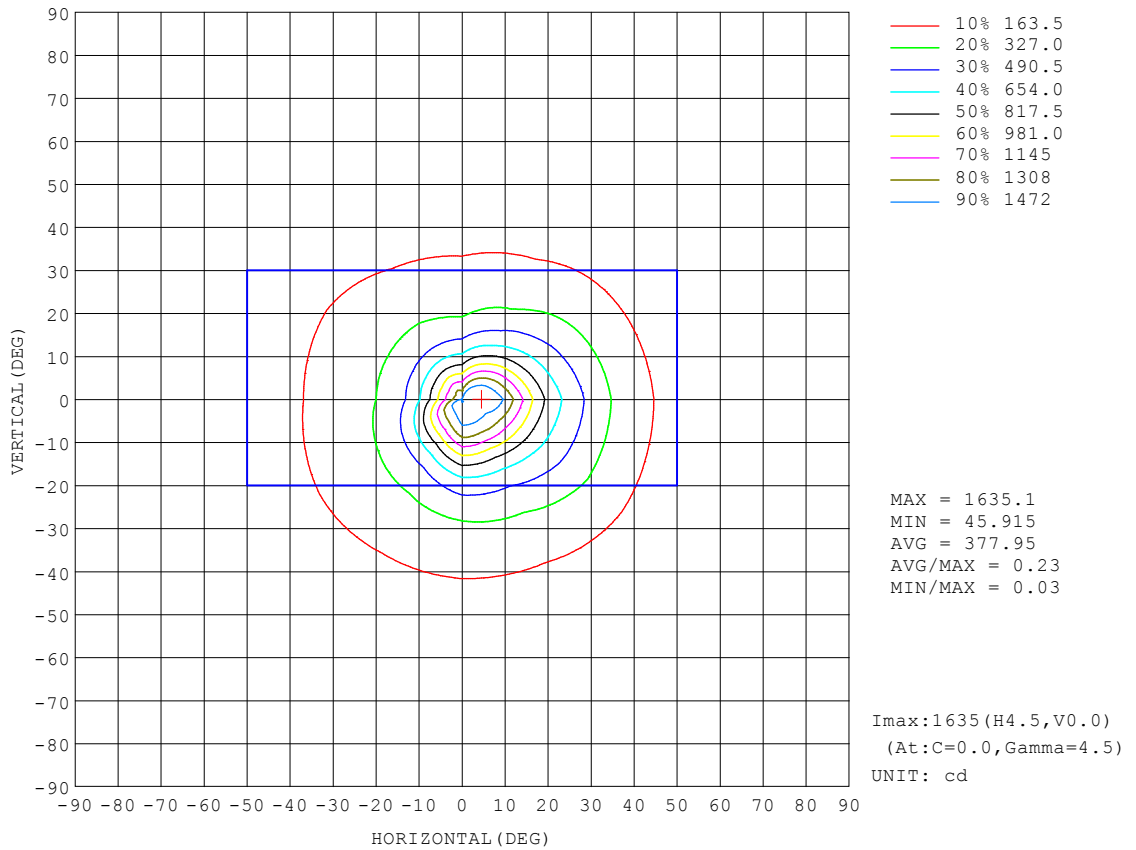
REFLECTANCE										
Ceiling	0.8	0.8	0.8	0.7	0.7	0.7	0.5	0.5	0.5	0
Walls	0.7	0.5	0.3	0.7	0.5	0.3	0.7	0.5	0.3	0
Working plane	0.2	0.2	0.2	0.2	0.2	0.2	0.2	0.2	0.2	0
ROOM INDEX	UTILIZATION FACTORS (PERCENT) $k(RI) \times RCR = 5$									
k = 0.60	62	55	51	62	55	51	61	55	51	47
0.80	69	63	58	69	62	58	67	62	58	54
1.00	75	68	64	74	68	64	72	68	63	59
1.25	79	73	69	78	72	69	76	71	68	63
1.50	82	76	73	81	76	72	79	74	71	66
2.00	86	81	77	84	80	76	82	78	75	70
2.50	88	83	80	86	82	79	83	80	77	71
3.00	90	86	82	88	84	81	85	82	79	73
4.00	92	89	86	90	87	85	86	84	82	75
5.00	93	90	88	91	89	87	87	86	84	77
ROOM INDEX	UF(total)									Direct
According to DIN EN 13032-2 2004			Suspended				SHRNOM = 1.25			

C Range: 0 - 360DEG
 C Interval: 30.0DEG
 Test Speed: HIGH
 Temperature: 25.3DEG
 Operators: DAMIN
 Test Date: 2021-08-06

Range: 0 - 180DEG
 Interval: 0.5DEG
 Test System: EVERFINE GO-2000B_V1 SYSTEM V2.0.281
 Humidity: 65.0%
 Test Distance: 8.000m [K=1.0000]
 Remarks:

ISOCANDELA DIAGRAM

NAME: 折叠灯10W-4000K-2835	TYPE:	WEIGHT:
SPEC.:	DIM.:	SERIAL No.:
MFR.: EVERFINE	SUR.:	PROTECTION ANGLE:

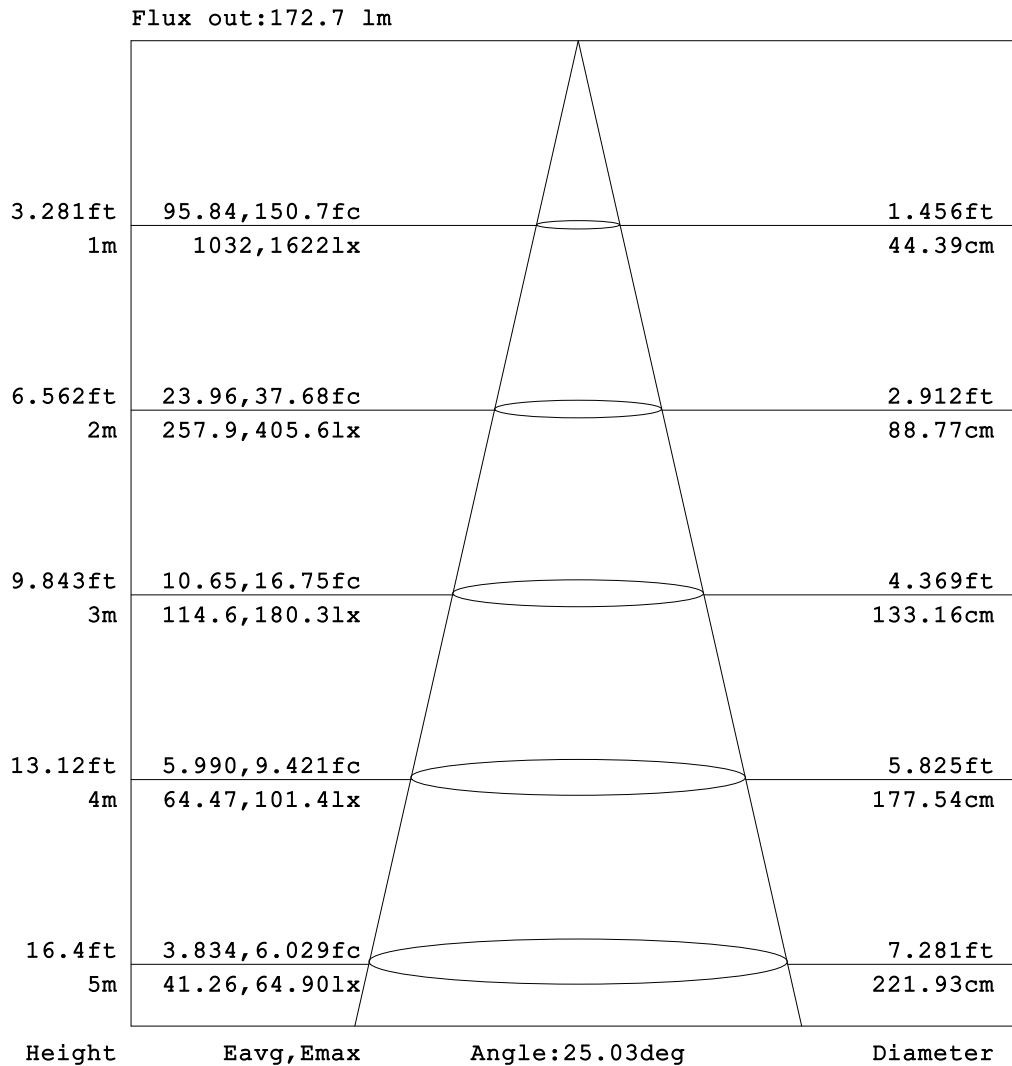


C Range: 0 - 360DEG
 C Interval: 30.0DEG
 Test Speed: HIGH
 Temperature:25.3DEG
 Operators:DAMIN
 Test Date:2021-08-06

Range: 0 - 180DEG
 Interval: 0.5DEG
 Test System:EVERFINE GO-2000B_V1 SYSTEM V2.0.281
 Humidity:65.0%
 Test Distance:8.000m [K=1.0000]
 Remarks:

AAI Figure

NAME: 折叠灯10W-4000K-2835	TYPE:	WEIGHT:
SPEC.:	DIM.:	SERIAL No.:
MFR.: EVERFINE	SUR.:	PROTECTION ANGLE:



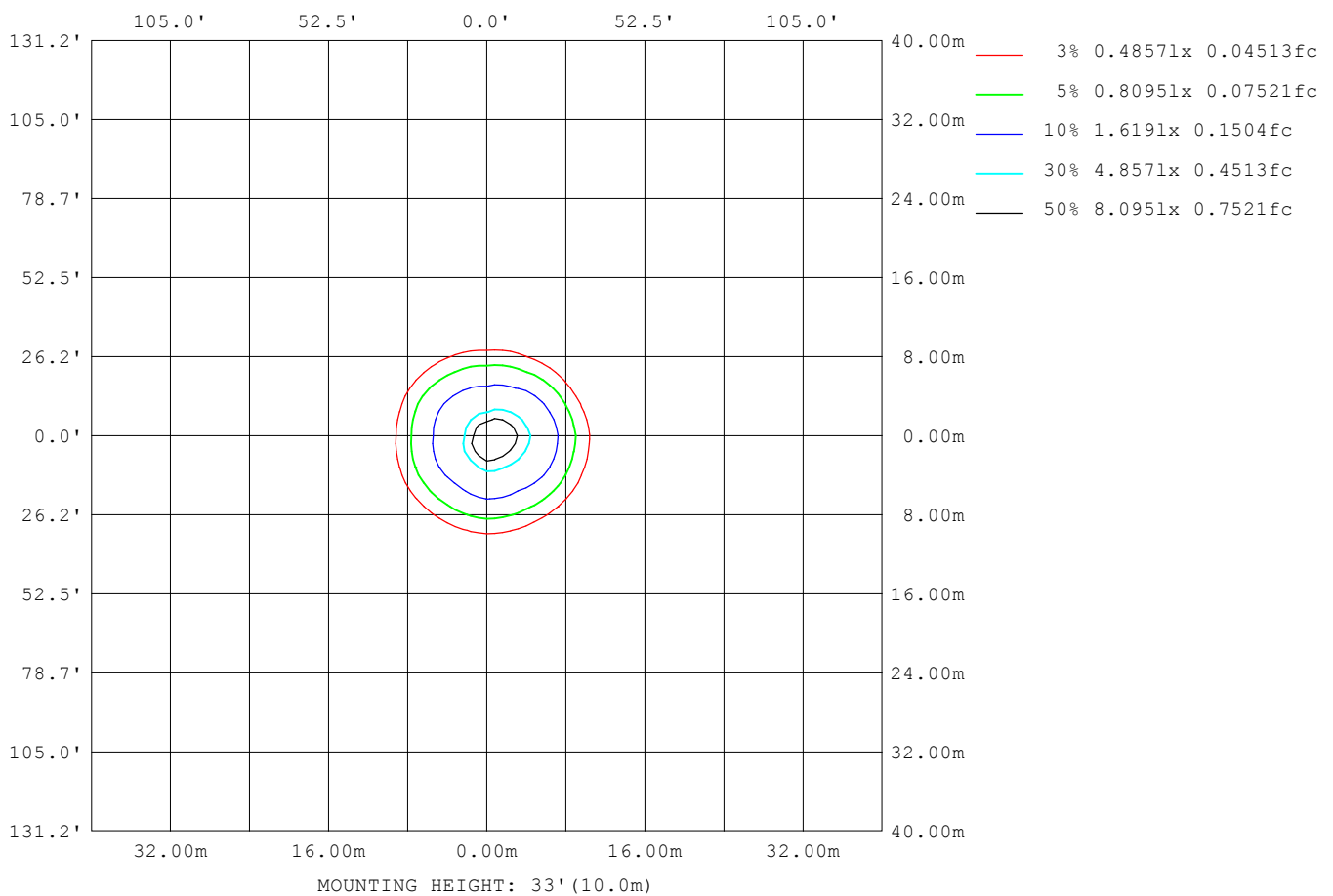
Note: The Curves indicate the illuminated area and the average illumination when the luminaire is at different distance.

C Range: 0 - 360DEG
 C Interval: 30.0DEG
 Test Speed: HIGH
 Temperature: 25.3DEG
 Operators: DAMIN
 Test Date: 2021-08-06

Range: 0 - 180DEG
 Interval: 0.5DEG
 Test System: EVERFINE GO-2000B_V1 SYSTEM V2.0.281
 Humidity: 65.0%
 Test Distance: 8.000m [K=1.0000]
 Remarks:

ISOLUX DIAGRAM

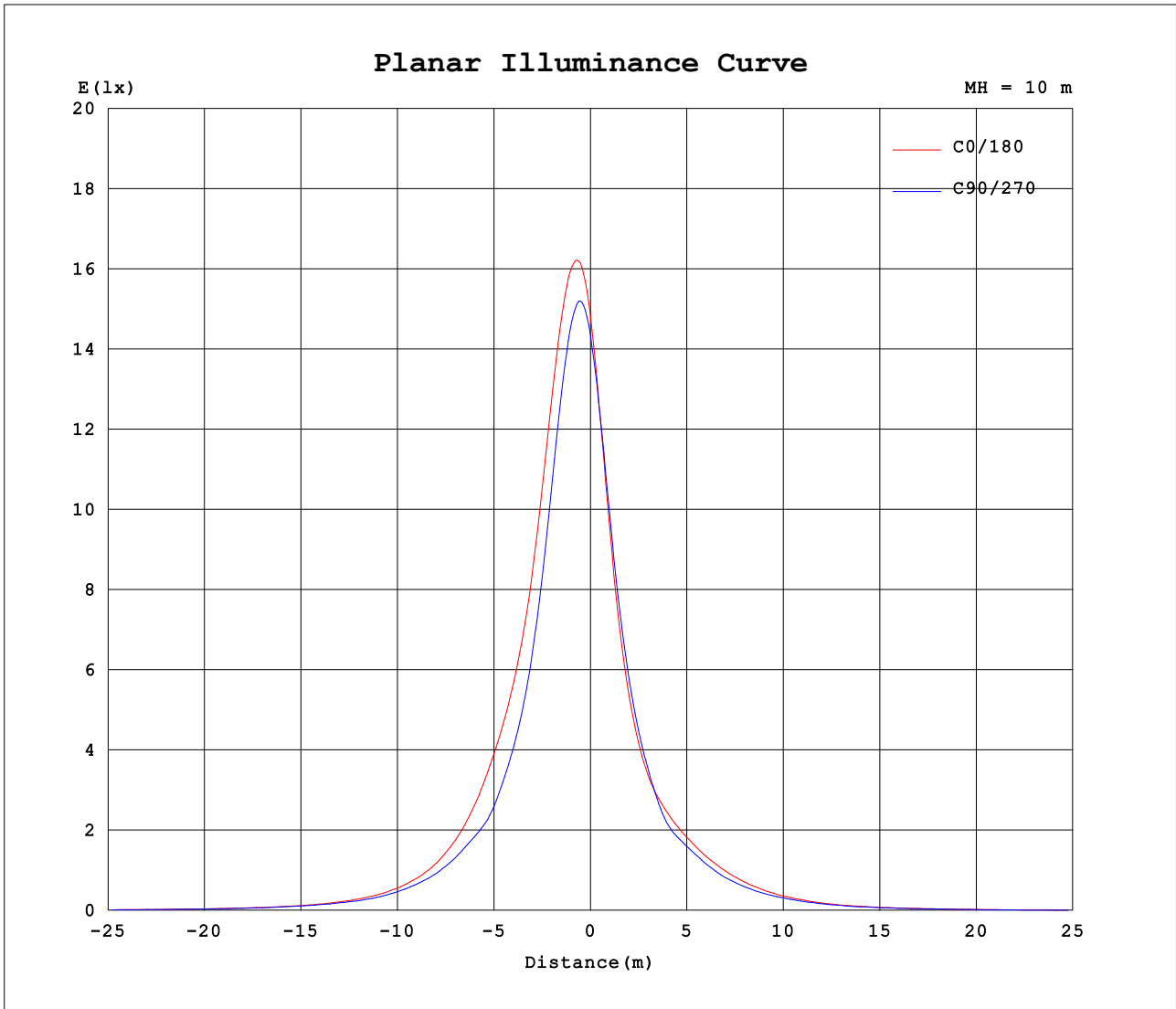
NAME: 折叠灯10W-4000K-2835	TYPE:	WEIGHT:
SPEC.:	DIM.:	SERIAL No.:
MFR.: EVERFINE	SUR.:	PROTECTION ANGLE:



C Range: 0 - 360DEG
 C Interval: 30.0DEG
 Test Speed: HIGH
 Temperature: 25.3DEG
 Operators: DAMIN
 Test Date: 2021-08-06

Range: 0 - 180DEG
 Interval: 0.5DEG
 Test System: EVERFINE GO-2000B_V1 SYSTEM V2.0.281
 Humidity: 65.0%
 Test Distance: 8.000m [K=1.0000]
 Remarks:

Planar Illuminance Curve



C Range: 0 - 360DEG
 C Interval: 30.0DEG
 Test Speed: HIGH
 Temperature: 25.3DEG
 Operators: DAMIN
 Test Date: 2021-08-06

Range: 0 - 180DEG
 Interval: 0.5DEG
 Test System: EVERFINE GO-2000B_V1 SYSTEM V2.0.281
 Humidity: 65.0%
 Test Distance: 8.000m [K=1.0000]
 Remarks:

LUMINOUS DISTRIBUTION INTENSITY DATA

NAME: 折叠灯10W-4000K-2835	TYPE:	WEIGHT:
SPEC.:	DIM.:	SERIAL No.:
MFR.: EVERFINE	SUR.:	PROTECTION ANGLE:

Table--1

UNIT: cd

C (DEG) \ □ (DEG)	0	30	60	90	120	150	180	210	240	270	300	330							
0	1492	1492	1492	1492	1492	1492	1492	1492	1492	1492	1492	1492							
5	1642	1584	1529	1565	1339	1209	1043	1074	1081	1106	1290	1437							
10	1449	1373	1236	1275	946	788	643	678	681	715	908	1127							
15	1088	1012	857	876	610	500	430	453	449	474	600	787							
20	785	738	595	593	418	350	329	343	333	318	424	571							
25	597	571	441	423	316	277	272	287	262	246	291	429							
30	446	441	324	316	246	232	224	237	203	202	222	317							
35	322	326	243	250	194	186	181	191	158	156	171	231							
40	226	227	186	187	156	145	140	147	125	120	128	166							
45	160	165	137	138	118	109	104	109	96.4	92.4	94.1	115							
50	113	117	96.3	99.8	84.5	79.7	74.1	76.3	72.9	68.2	70.3	79.9							
55	80.4	85.1	70.5	75.9	62.1	57.1	52.5	52.0	53.8	48.5	52.7	56.1							
60	59.7	61.7	47.0	55.0	45.0	40.0	38.6	37.5	40.0	35.8	38.1	41.0							
65	44.8	46.5	35.8	40.4	33.0	29.1	28.6	28.8	30.1	23.4	29.3	30.6							
70	36.0	35.9	28.7	27.8	24.0	21.4	20.6	21.9	19.6	17.3	20.0	23.8							
75	28.2	27.0	19.8	19.2	14.4	16.0	13.5	16.1	14.5	11.3	14.3	18.4							
80	20.8	20.9	14.7	13.7	10.7	8.89	6.23	8.53	7.13	4.18	8.01	11.0							
85	11.7	10.5	7.56	6.44	4.46	4.06	1.44	2.65	2.38	1.09	1.85	3.58							
90	2.06	3.16	2.43	2.07	1.66	1.57	0.97	2.00	1.97	1.04	0.997	0.9809							
95	1.79	2.62	2.24	1.79	1.66	1.58	0.88	1.61	1.72	0.96	0.94	0.9683							
100	1.77	2.54	2.17	1.79	1.67	1.61	0.86	1.34	1.52	0.90	0.88	0.92							
105	1.77	2.50	2.12	1.80	1.70	1.66	0.91	1.15	1.48	0.91	0.87	0.88							
110	1.78	2.41	2.10	1.42	1.76	1.76	1.05	1.17	1.39	0.99	0.90	0.87							
115	1.84	2.32	2.13	1.83	1.88	1.91	1.26	1.31	1.36	1.16	1.01	0.92							
120	1.96	2.48	2.22	1.96	2.05	2.11	1.50	1.50	1.47	1.36	1.17	1.04							
125	2.16	2.69	2.40	1.94	2.28	2.37	1.79	1.76	1.67	1.60	1.35	1.20							
130	2.41	2.88	2.65	2.38	2.56	2.65	2.14	2.10	1.93	1.92	1.59	1.39							
135	2.70	2.98	2.92	2.85	2.82	2.89	2.55	2.50	2.26	2.32	1.90	1.64							
140	2.97	3.10	3.18	3.11	3.04	3.07	3.03	2.96	2.66	2.77	2.27	1.97							
145	3.21	3.40	3.28	3.33	3.21	3.20	3.49	3.41	3.10	3.22	2.71	2.38							
150	3.41	3.54	3.46	3.49	3.32	3.30	3.83	3.71	3.45	3.61	3.16	2.84							
155	3.58	3.63	3.64	3.62	3.40	3.38	3.91	3.84	3.61	3.79	3.47	3.24							
160	3.71	3.74	3.74	3.71	3.48	3.42	3.84	3.83	3.58	3.81	3.57	3.47							
165	3.80	3.85	3.79	3.75	3.50	3.44	3.76	3.75	3.51	3.72	3.55	3.54							
170	3.84	3.91	3.80	3.74	3.50	3.42	3.69	3.68	3.45	3.61	3.46	3.51							
175	3.84	3.89	3.73	3.69	3.44	3.39	3.70	3.68	3.47	3.61	3.41	3.43							
180	3.76	3.84	3.60	3.70	3.44	3.38	3.78	3.75	3.54	3.70	3.42	3.42							

C Range: 0 - 360DEG
 C Interval: 30.0DEG
 Test Speed: HIGH
 Temperature:25.3DEG
 Operators:DAMIN
 Test Date:2021-08-06

□ Range: 0 - 180DEG
 □ Interval: 0.5DEG
 Test System:EVERFINE GO-2000B_V1 SYSTEM V2.0.281
 Humidity:65.0%
 Test Distance:8.000m [K=1.0000]
 Remarks: