

# Engine-direct drive type

## Truck Series



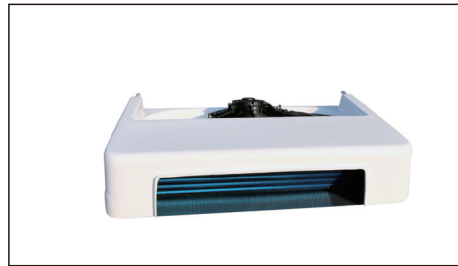
C150F / C300F Condenser



C350F Condenser



C300F / C350F Evaporator



C150F Evaporator

Model No.		C150F	C300F	C350F
Temperature		- 5°C ~ +25°C	- 5°C ~ +25°C	- 5°C ~ +25°C
Voltage		DC12V/DC24V	DC12V/DC24V	DC12V/DC24V
Cooling capacity	- 5°C / 23°F	1480W	2780W	3180W
	- 18°C / -0.4 °F	No	No	No
Refrigeration		R134A	R134A	R134A
Compressor		TM16/QP16/SD5S14		TM16/QP16/SD7L15
Defrost		Optional	Optional	Optional
Condenser	Fan QTY	1	1	2
	Dimension	925*450*260mm	925*450*260mm	925*450*260mm
	Weight	20Kg	22Kg	24Kg
Evaporator	Fan QTY	1	2	2
	Dimension	766*520*130mm	766*520*130mm	955*534*160mm
	Weight	12Kg	14Kg	17Kg
Application	+ 5°C / 41°F	6~7m <sup>3</sup>	8~9m <sup>3</sup>	10~12m <sup>3</sup>
	- 5°C / 23°F	3~5m <sup>3</sup>	6~7m <sup>3</sup>	8~9m <sup>3</sup>
	- 18°C / -0.4 °F	No	No	No
	- 25°C / -13°F	No	No	No
Optional		Defroster, Electric standby.		

Notes: 1. All data are based on ambient temperature 45°C degree, it will change according different ambient temperature. 2. Standard insulation thickness 80mm. 3. All data will change without priority notice.