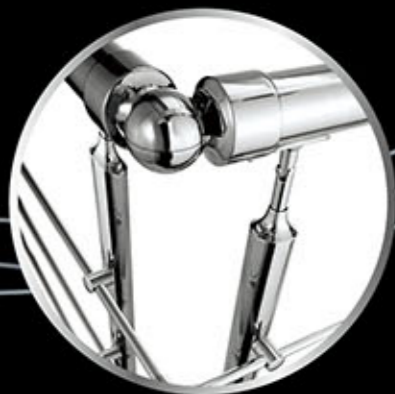


工业设计 | 品牌 VI 设计  
天津设计 | TEL: 138 2347 3047



**HUIDEXING**  
Stainless steel pipe

**HUIDEXING STAINLESS STEEL PRODUCTS LTD (HOLAR )**

No.52, West Road Tri-circle, Xiaotang, Shishan Town, Nanhai District, Foshan City

管厂 Factory : 0757-23815891 / 23815892

Fax: 757-23815890

管门市 Pipe outlets : 0757-83819530 / 83871721 / 82001907

Fax: 757-83822349

配件门市 Accessories outlets: 0757-83312683 / 83315433 / 83315981

Fax: 757-83310989

出口部 Export company: 0757-83070870 / 83070872

Fax: 757-83070871

Mp: 0086-13923113771

Mail: admin@huidexing.com

Web: www.huidexing.com



**HUIDEXING STAINLESS STEEL PRODUCTS LTD (HOLAR )**



## COMPANY INTRODUCTION

---

HUIDEXING Stainless Steel Products Ltd (Holar Stainless Steel Products Ltd) is a Large enterprise specializing in manufacture of stainless steel profile established in year 1997, major in stainless steel tube and accessories, we have over 10000 square meters workshop and more than 200 workers, have 100 production line, one month produce 3000tons stainless steel tube.

We have a very professional sales team, each year attend two times Canton Fair, and at least one time Foreign Trade Show. Since the establishment of the company, we have been introducing in world-advanced stainless steel production lines, using international standard stainless steel materials, adopting advanced production techniques and technologies, to guarantee our products quality. The company has successively passed ISO9001: 2000 international quality management system certification, etc.

Our products are in complete specs, diversified varieties, excellent quality, affordable prices, good services, best loved by users. Different product series are selling well in all major cities of the country, and some are sold to Southeast Asia, Middle East, South America, and so on. We have 60% goods sales to oversea, market in Southeast Asia, Middle East, South America, all over the world. Annual sales volume over 100, 000, 000\$.





PROOF OF THE STRENGTH OF THE  
实力规模 用实力证明

## SCALE WITH STRENGTH

高性能的生产设备，源于先进的生产动力。为了产品的质量完美，我们引用具有国际先进水平的焊管成套及冷轧设备，并在生产的每一环节，都执行了严格的生产程序，务求每一条钢管都是最优质的产品，确保产品符合标准和满足客户的严格要求。

High-performance production equipment, advanced production from power. In order to the perfect quality of the product, we refer to sets of pipe and cold equipment with international advanced level, and in every aspect of production, perform a rigorous production process, each pipe is to ensure the highest quality products to ensure that products meet standards and meet strict requirements.





THCHNOLOGY  
STRIVE  
FOR PERFECTION

工艺·精益求精





品质是企业的第一生命力，我们提供的品质是多年来技术磨练的结晶，每一件商品都让您感受到制作人所要表达的心意。

Quality is the first vitality of a company. We ensure to provide you convincing quality as they are the result of technical training for many years. Each item is to let you feel the same way as its producer does.





## PROJECT CASES

### 工程案例

在客户成本控制和专业的完美表现中获得适当平衡,发挥不同项目的独特个性,并以高质量的设计服务作为核心,利用团队的力量,打造国际级的设计作品。

To obtain proper balance between customer cost control and perfect professional performance, and play the unique personality for different cases, we will take high quality as the core of design service and create a world-class design works by the power of our teamwork.





**HOLAR** 

每一个工程，都是一件独一无二的作品  
每一个项目，都抒写着汇德兴的壮志情怀  
每一个细节，都体现着汇德兴的创新精神

Every project, is a unique works  
Every project, express the remit of HUIDEXING ambition feelings  
Every detail, embodies the HUIDEXING spirit of innovation





# SERVICE PROCESSES

## 1 TAILORED 服务流程 量身定制

安排专人上门沟通，了解每一位客户的需要，具体安放场所，以及所需定制不锈钢管的长度，由内部人员商量、研究、给出一套完整的定制方案，从细节到外观都为您考虑周到，以专业为您解答所有的问题，以及您的实际用途，为您提供适合您完美方案，过程中有专业人员解答您的问题。

Arrange on-site communication, understanding each customer's needs, the specific placement sites, as well as custom stainless steel tube length required by the internal staff to discuss, research, given a complete set of customized solutions, both from the details for you to consider the appearance thoughtful.

## 2 CONTRACT 签署合同

签署合同，为您提供产品保修等一系列安全保障，确保令每一位客户无后顾之忧，放心定制。

Signed a contract to provide you with product warranty and a series of safeguards to ensure that every customer peace of mind, rest assured customization.



## 3 MATERIAL 材质核定

利用先进的工艺，打造具有前瞻性的创新产品以满足市场不断变化的需求。

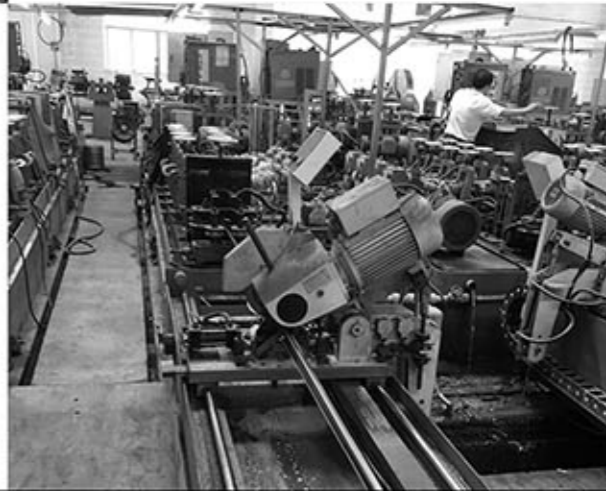
The use of advanced technology to create innovative products to meet with prospective changing market demands.



## 4 PRODUCTION 专业生产

先进的生产设备，选用优质的原材料，所有产品经过严格检测，每一个环节都井然有序。

Advanced production equipment, high quality raw materials, all products undergo rigorous testing, each link in order.







## NEW PRODUCT

新产品

---



## NEW DESIGN

新设计

---



## NEW MATERIAL

新材质

---



STAINLESS STEEL

不锈钢管广泛的应用领域

## WIDE APPLICATION FIELDS

---

### 室内工程（家用、办公室） INDOOR ENGINEERING (HOME, OFFICE)

汇德兴集多年生产不锈钢管经验，专注研发，应用于家庭、办公室等不锈钢应用解决方案，满足客户对家居和办公生活安全性、美观性、耐用性的需求。汇德兴生产的 304 不锈钢管不易生锈，质优，大大提升居生活品质。

Department of HUIDEXING set many years experience in the production of steel endlessly, focused research and development used in homes, offices and other stainless steel application solutions to meet customers' home and office life safety, Aesthetics; durability requirements. Department of Dexing produced 304 stainless steel pipe rust, high quality, greatly enhance the living quality of life.

### 楼宇工程 BUILDING ENGINEERING

写字楼等建筑整体设计原则上，加上在楼梯立柱，防盗窗的应用上，可达到统一的整体感，在美观、大方的基础上加强安全性、可靠性。并根据用户实际需求，定制不同需求的自动门解决方案。

The overall design principles, such as office buildings, plus columns on the stairs, security windows applications, the overall sense of unity can be achieved, to strengthen security in the beautiful, generous, based on Reliability. And according to the actual needs of the different needs of the automatic door customized solutions.

### 市政工程（火车站、机场、码头、地铁、河道护栏） MUNICIPAL ENGINEERING (TRAIN STATION, AIRPORT, DOCK, SUBWAY, RIVER FENCE)

汇德兴的市政解决方案广泛适用于车站、机场、码头、地铁站、河道护栏等公共场合。坚固、美观、方便适用、安全、可靠性强。

Department of HUIDEXING municipal solutions widely used in railway stations, airports, terminals, subway stations, river fence and other public occasions. Strong, beautiful, easy to apply, safe and strong reliability.



创新，无处不在。

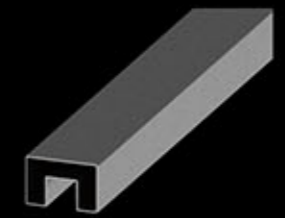
## INNOVATION IS HERE AND THERE

---





**H-001**  
Materials:304# / 316#  
Finish:SSS / PSS / TI



**H-002**  
Materials:304# / 316#  
Finish:SSS / PSS / TI



**H-003**  
Materials:304# / 316#  
Finish:SSS / PSS / TI



**H-004**  
Materials:304# / 316#  
Finish:BLACK



**H-005**  
Materials:304# / 316#  
Finish:BLACK



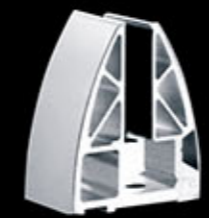
**H-006**  
Materials:304# / 316#  
Finish:SSS / PSS / TI



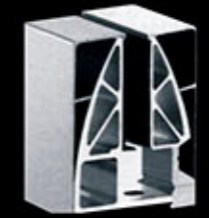
**H-007**  
Materials:304# / 316#  
Finish:SSS / PSS / TI



**H-008**  
Materials:304# / 316#  
Finish:SSS / PSS / TI



**H-009**  
Materials:304# / 316#  
Finish:SSS / PSS / TI



**H-010**  
Materials:304# / 316#  
Finish:SSS / PSS / TI





**H-011**  
Materials:304# / 316#  
Finish:SSS / PSS / TI



**H-012**  
Materials:304# / 316#  
Finish:SSS / PSS / TI



**H-013**  
Materials:304# / 316#  
Finish:SSS / PSS / TI



**H-014**  
Materials:304# / 316#  
Finish:SSS / PSS / TI



**H-015**  
Materials:304# / 316#  
Finish:SSS / PSS / TI



**H-016**  
Materials:304# / 316#  
Finish:SSS / PSS / TI



**H-017**  
Materials:304# / 316#  
Finish:SSS / PSS / TI



**H-018**  
Materials:304# / 316#  
Finish:SSS / PSS / TI



**H-019**  
Materials:304# / 316#  
Finish:SSS / PSS / TI



**H-020**  
Materials:304# / 316#  
Finish:SSS / PSS / TI



**H-021**  
Materials:304# / 316#  
Finish:SSS / PSS / TI



**H-022**  
Materials:304# / 316#  
Finish:SSS / PSS / TI









**H-023**

Materials:304# / 316#  
Finish:SSS / PSS / TI  
SIZE:Φ51



**H-024**

Materials:304# / 316#  
Finish:SSS / PSS / TI  
SIZE:Φ51



**H-025**

Materials:304# / 316#  
Finish:SSS / PSS / TI  
SIZE:Φ51



**H-026**

Materials:304# / 316#  
Finish:SSS / PSS / TI  
SIZE:Φ51



**H-027**

Materials:304# / 316#  
Finish:SSS / PSS / TI  
SIZE:Φ51



**H-028**

Materials:304# / 316#  
Finish:SSS / PSS / TI



**H-029**

Materials:304# / 316#  
Finish:SSS / PSS / TI



**H-030**

Materials:304# / 316#  
Finish:SSS / PSS / TI



**H-031**

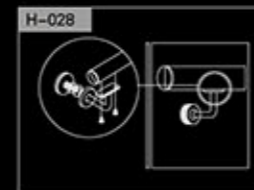
Materials:304# / 316#  
Finish:SSS / PSS / TI



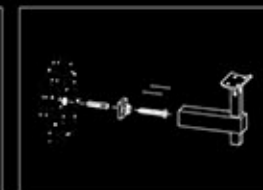
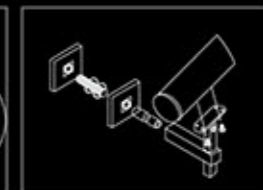
**H-032**

Materials:304# / 316#  
Finish:SSS / PSS / TI

STAIR RAIL SERIES  
Installation Diagram



STAIR RAIL SERIES  
Installation Diagram







**H-033**

Materials:304# / 316#  
Finish:SSS / PSS / TI



**H-034**

Materials:304# / 316#  
Finish:SSS / PSS / TI



**H-035**

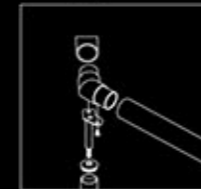
Materials:304# / 316#  
Finish:SSS / PSS / TI



**H-036**

Materials:304# / 316#  
Finish:SSS / PSS / TI

STAIR RAIL SERIES  
Installation Diagram



**H-037**

Materials:304# / 316#  
Finish:SSS / PSS / TI  
SIZE:Φ38 Φ51



**H-038**

Materials:304# / 316#  
Finish:SSS / PSS / TI  
SIZE:Φ38 Φ51



**H-039**

Materials:304# / 316#  
Finish:SSS / PSS / TI  
SIZE:Φ38 Φ51



**H-040**

Materials:304# / 316#  
Finish:SSS / PSS / TI  
SIZE:Φ38 Φ51



**H-041**

Materials:304# / 316#  
Finish:SSS / PSS / TI  
SIZE:Φ38 Φ51



**H-042**

Materials:304# / 316#  
Finish:SSS / PSS / TI  
SIZE:Φ38 Φ51



**H-043**

Materials:304# / 316#  
Finish:SSS / PSS / TI  
SIZE:Φ38 Φ51



**H-044**

Materials:304# / 316#  
Finish:SSS / PSS / TI  
SIZE:Φ38 Φ51





**H-045**

Materials:304# / 316#  
Finish:SSS / PSS / TI  
SIZE:Φ38 Φ51



**H-046**

Materials:304# / 316#  
Finish:SSS / PSS / TI  
SIZE:Φ38 Φ51



**H-047**

Materials:304# / 316#  
Finish:SSS / PSS / TI  
SIZE:Φ38 Φ51



**H-054**

Materials:304# / 316#  
Finish:SSS / PSS / TI  
SIZE:Φ38 Φ51



**H-055**

Materials:304# / 316#  
Finish:SSS / PSS / TI  
SIZE:Φ38 Φ51



**H-048**

Materials:304# / 316#  
Finish:SSS / PSS / TI  
SIZE:Φ38 Φ51



**H-049**

Materials:304# / 316#  
Finish:SSS / PSS / TI  
SIZE:Φ38 Φ51



**H-050**

Materials:304# / 316#  
Finish:SSS / PSS / TI  
SIZE:Φ38 Φ51



**H-056**

Materials:304# / 316#  
Finish:SSS / PSS / TI  
SIZE:Φ38 Φ51



**H-057**

Materials:304# / 316#  
Finish:SSS / PSS / TI  
SIZE:Φ38 Φ51



**H-051**

Materials:304# / 316#  
Finish:SSS / PSS / TI  
SIZE:Φ51



**H-052**

Materials:304# / 316#  
Finish:SSS / PSS / TI  
SIZE:Φ38 Φ51



**H-053**

Materials:304# / 316#  
Finish:SSS / PSS / TI  
SIZE: Φ51



**H-058**

Materials:304# / 316#  
Finish:SSS / PSS / TI  
SIZE:Φ38 Φ51



**H-059**

Materials:304# / 316#  
Finish:SSS / PSS / TI  
SIZE:Φ38 Φ51







**H-060**

Materials:304# / 316#  
Finish:SSS / PSS / TI  
SIZE:Φ38 Φ51



**H-061**

Materials:304# / 316#  
Finish:SSS / PSS / TI  
SIZE:Φ38 Φ42 Φ51



**H-062**

Materials:304# / 316#  
Finish:SSS / PSS / TI  
SIZE:Φ38 Φ51



**H-063**

Materials:304# / 316#  
Finish:SSS / PSS / TI  
SIZE:Φ38 Φ51



**H-064**

Materials:304# / 316#  
Finish:SSS / PSS / TI  
SIZE:Φ51



**H-065**

Materials:304# / 316#  
Finish:SSS / PSS / TI  
SIZE:Φ38 Φ51



**H-066**

Materials:304# / 316#  
Finish:SSS / PSS / TI  
SIZE:Φ38 Φ42 Φ51



**H-067**

Materials:304# / 316#  
Finish:SSS / PSS / TI  
SIZE:Φ38 Φ51



**H-068**

Materials:304# / 316#  
Finish:SSS / PSS / TI  
SIZE:Φ38 Φ51



**H-069**

Materials:304# / 316#  
Finish:SSS / PSS / TI  
SIZE:Φ51



**H-070**

Materials:304# / 316#  
Finish:SSS / PSS / TI  
SIZE:Φ38 Φ51



**H-071**

Materials:304# / 316#  
Finish:SSS / PSS / TI  
SIZE:Φ38 Φ51





**H-072**

Materials:304# / 316#  
Finish:SSS / PSS / TI  
SIZE:Φ38 Φ51



**H-073**

Materials:304# / 316#  
Finish:SSS / PSS / TI  
SIZE:Φ38 Φ51



**H-074**

Materials:304# / 316#  
Finish:SSS / PSS / TI  
SIZE:Φ38 Φ51



**H-075**

Materials:304# / 316#  
Finish:SSS / PSS / TI  
SIZE:Φ38 Φ51



**H-076**

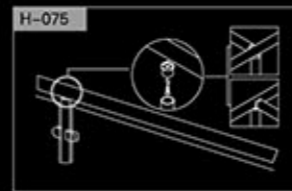
Materials:304# / 316#  
Finish:SSS / PSS / TI  
SIZE:Φ38 Φ51



**H-077**

Materials:304# / 316#  
Finish:SSS / PSS / TI  
SIZE:Φ38 Φ51

STAIR RAIL SERIES  
Installation Diagram



**H-078**

Materials:304# / 316#  
Finish:SSS / PSS / TI  
SIZE:Φ38 Φ51



**H-079**

Materials:304# / 316#  
Finish:SSS / PSS / TI  
SIZE:Φ38 Φ51



**H-080**

Materials:304# / 316#  
Finish:SSS / PSS / TI  
SIZE:Φ38 Φ51



**H-081**

Materials:304# / 316#  
Finish:SSS / PSS / TI  
SIZE:Φ38 Φ51



**H-082**

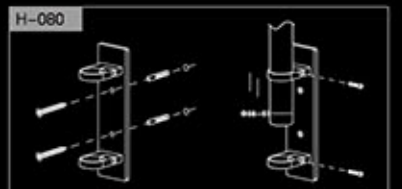
Materials:304# / 316#  
Finish:SSS / PSS / TI  
SIZE:40x40 50x50



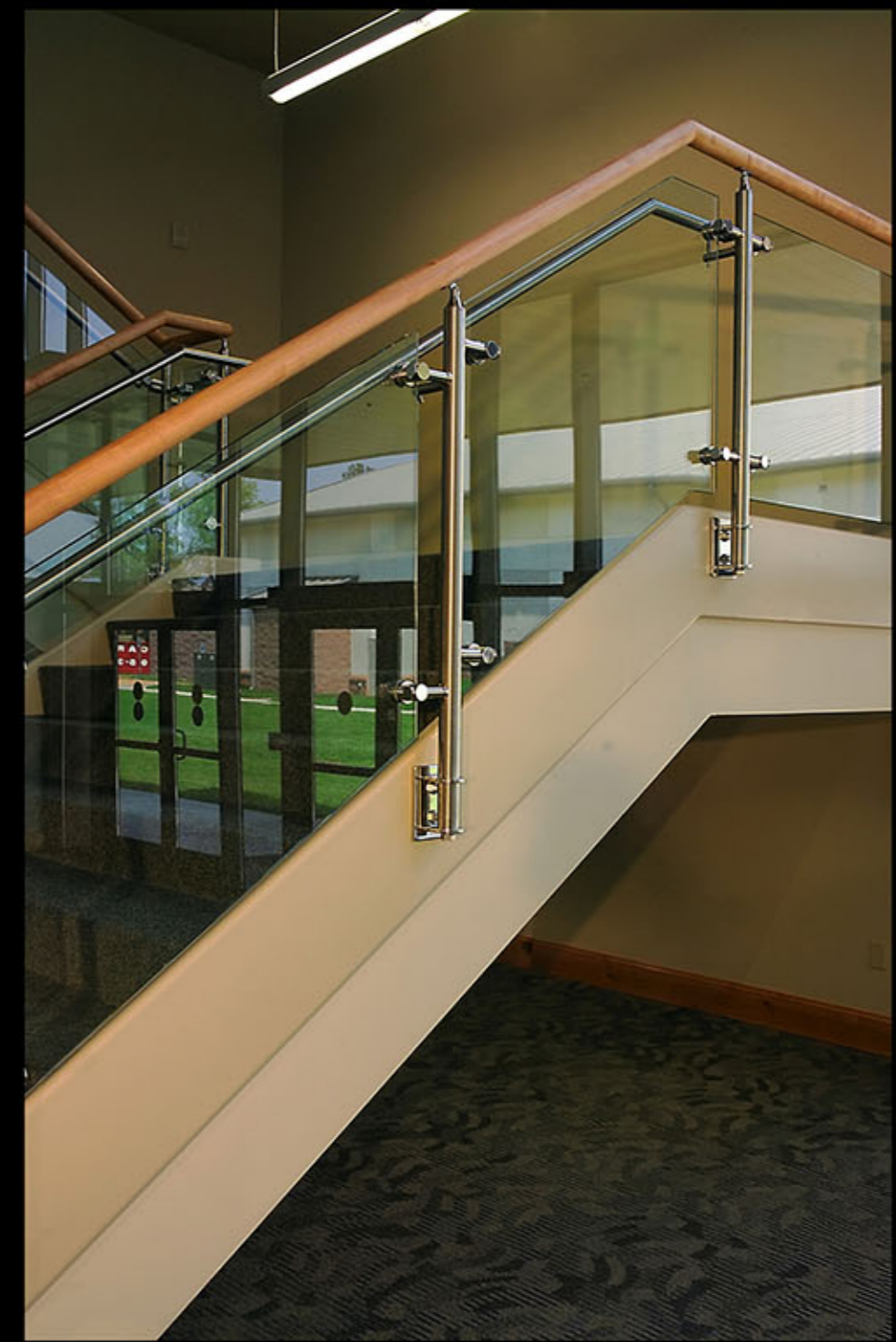
**H-083**

Materials:304# / 316#  
Finish:SSS / PSS / TI  
SIZE:Φ38 Φ51

STAIR RAIL SERIES  
Installation Diagram











**H-084**

Materials:304# / 316#  
Finish:SSS / PSS / TI  
SIZE:40x40 50x50



**H-085**

Materials:304# / 316#  
Finish:SSS / PSS / TI  
SIZE:40x40 50x50



**H-086**

Materials:304# / 316#  
Finish:SSS / PSS / TI  
SIZE:40x40 50x50



**H-087**

Materials:304# / 316#  
Finish:SSS / PSS / TI  
SIZE:40x40 50x50



**H-088**

Materials:304# / 316#  
Finish:SSS / PSS / TI  
SIZE:40x40 50x50



**H-089**

Materials:304# / 316#  
Finish:SSS / PSS / TI  
SIZE:40x40 50x50



**H-090**

Materials:304# / 316#  
Finish:SSS / PSS / TI  
SIZE:40x40 50x50



**H-091**

Materials:304# / 316#  
Finish:SSS / PSS / TI  
SIZE:40x40 50x50



**H-092**

Materials:304# / 316#  
Finish:SSS / PSS / TI  
SIZE:40x40 50x50



**H-093**

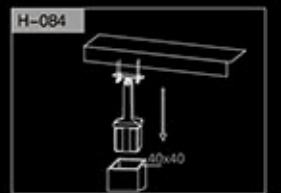
Materials:304# / 316#  
Finish:SSS / PSS / TI  
SIZE:40x40 50x50



**H-094**

Materials:304# / 316#  
Finish:SSS / PSS / TI  
SIZE:40x40 50x50

STAIR RAIL SERIES  
Installation Diagram







**H-095**

Materials:304# / 316#  
Finish:SSS / PSS / TI  
SIZE:Φ38 Φ51



**H-096**

Materials:304# / 316#  
Finish:SSS / PSS / TI  
SIZE:Φ38 Φ51



**H-097**

Materials:304# / 316#  
Finish:SSS / PSS / TI  
SIZE:Φ38 Φ51



**H-098**

Materials:304# / 316#  
Finish:SSS / PSS / TI  
SIZE:Φ38 Φ51 Φ63



**H-099**

Materials:304# / 316#  
Finish:SSS / PSS / TI  
SIZE:Φ38 Φ42 Φ51 Φ63



**H-100**

Materials:304# / 316#  
Finish:SSS / PSS / TI  
SIZE:Φ38 Φ51



**H-101**

Materials:304# / 316#  
Finish:SSS / PSS / TI  
SIZE:Φ13 Φ16 Φ19



**H-102**

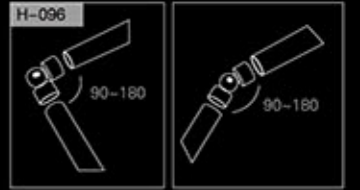
Materials:304# / 316#  
Finish:SSS / PSS / TI  
SIZE:Φ13 Φ16 Φ19



**H-103**

Materials:304# / 316#  
Finish:SSS / PSS / TI  
SIZE:Φ13 Φ16 Φ19

STAIR RAIL SERIES  
Installation Diagram







### H-104

Materials:304# / 316#  
Finish:SSS / PSS / TI  
SIZE:25x13



### H-105

Materials:304# / 316#  
Finish:SSS / PSS / TI  
SIZE:40x40 50x50



### H-106

Materials:304# / 316#  
Finish:SSS / PSS / TI  
SIZE:40x40 50x50



### H-113

Materials:304# / 316#  
Finish:SSS / PSS / TI  
SIZE:Φ38 Φ51



### H-114

Materials:304# / 316#  
Finish:SSS / PSS / TI  
SIZE:Φ38 Φ51



### H-115

Materials:304# / 316#  
Finish:SSS / PSS / TI  
SIZE:Φ38 Φ51



### H-107

Materials:304# / 316#  
Finish:SSS / PSS / TI  
SIZE:Φ13 Φ16 Φ19



### H-108

Materials:304# / 316#  
Finish:SSS / PSS / TI  
SIZE:Φ38 Φ51



### H-109

Materials:304# / 316#  
Finish:SSS / PSS / TI  
SIZE:Φ42 Φ48



### H-116

Materials:304# / 316#  
Finish:SSS / PSS / TI  
SIZE:Φ38 Φ51



### H-117

Materials:304# / 316#  
Finish:SSS / PSS / TI  
SIZE:Φ38 Φ51



### H-118

Materials:304# / 316#  
Finish:SSS / PSS / TI  
SIZE:Φ38 Φ51



### H-110

Materials:304# / 316#  
Finish:SSS / PSS / TI  
SIZE:Φ51



### H-111

Materials:304# / 316#  
Finish:SSS / PSS / TI  
SIZE:Φ38 Φ42 Φ51 Φ63



### H-111A

Materials:304# / 316#  
Finish:SSS / PSS / TI  
SIZE:Φ38 Φ51



### H-119

Materials:304# / 316#  
Finish:SSS / PSS / TI  
SIZE:Φ38 Φ51



### H-120

Materials:304# / 316#  
Finish:SSS / PSS / TI  
SIZE:Φ42 Φ48



### H-121

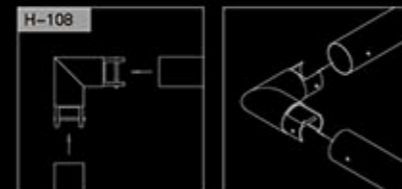
Materials:304# / 316#  
Finish:SSS / PSS / TI  
SIZE:Φ42 Φ48



### H-112

Materials:304# / 316#  
Finish:SSS / PSS / TI  
SIZE:Φ38 Φ42 Φ51 Φ63

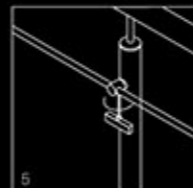
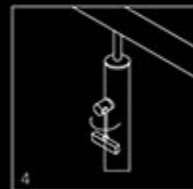
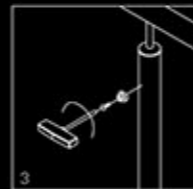
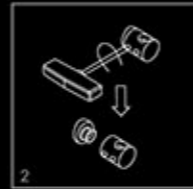
STAIR RAIL SERIES  
Installation Diagram







STAIR RAIL SERIES  
Installation Diagram



### H-122

Materials:304# / 316#  
Finish:SSS / PSS / TI  
SIZE:Φ13 Φ16 Φ19



### H-123

Materials:304# / 316#  
Finish:SSS / PSS / TI  
SIZE:Φ38 Φ51



### H-124

Materials:304# / 316#  
Finish:SSS / PSS / TI  
SIZE:Φ38 Φ51



### H-125

Materials:304# / 316#  
Finish:SSS / PSS / TI  
SIZE:Φ38 Φ51



### H-126

Materials:304# / 316#  
Finish:SSS / PSS / TI  
SIZE:Φ13 Φ16 Φ19



### H-127

Materials:304# / 316#  
Finish:SSS / PSS / TI  
SIZE:Φ13 Φ16 Φ19



### H-128

Materials:304# / 316#  
Finish:SSS / PSS / TI  
SIZE:Φ13 Φ16 Φ19



### H-129

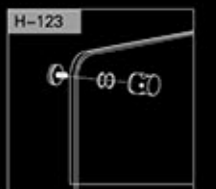
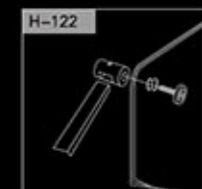
Materials:304# / 316#  
Finish:SSS / PSS / TI  
SIZE:Φ13 Φ16 Φ19



### H-130

Materials:304# / 316#  
Finish:SSS / PSS / TI  
SIZE:Φ13 Φ16 Φ19

STAIR RAIL SERIES  
Installation Diagram







**H-131**

Materials:304# / 316#  
Finish:SSS / PSS / TI  
SIZE:Φ38 Φ51



**H-132**

Materials:304# / 316#  
Finish:SSS / PSS / TI  
SIZE:Φ38 Φ51



**H-133**

Materials:304# / 316#  
Finish:SSS / PSS / TI  
SIZE:Φ38 Φ51



**H-134**

Materials:304# / 316#  
Finish:SSS / PSS / TI  
SIZE:Φ38 Φ51



**H-135**

Materials:304# / 316#  
Finish:SSS / PSS / TI  
SIZE:Φ13 Φ16 Φ19



**H-136**

Materials:304# / 316#  
Finish:SSS / PSS / TI  
SIZE:Φ38 Φ51



**H-137**

Materials:304# / 316#  
Finish:SSS / PSS / TI  
SIZE:Φ38 Φ51



**H-138**

Materials:304# / 316#  
Finish:SSS / PSS / TI  
SIZE:Φ38 Φ51



**H-139**

Materials:304# / 316#  
Finish:SSS / PSS / TI  
SIZE:Φ38 Φ51



**H-140**

Materials:304# / 316#  
Finish:SSS / PSS / TI  
SIZE:Φ38 Φ51



**H-141**

Materials:304# / 316#  
Finish:SSS / PSS / TI  
SIZE:Φ38 Φ51



**H-142**

Materials:304# / 316#  
Finish:SSS / PSS / TI  
SIZE:25x13





**H-146**  
Materials:304# / 316#  
Finish:SSS / PSS / TI  
SIZE:40x40 50x50



**H-147**  
Materials:304# / 316#  
Finish:SSS / PSS / TI  
SIZE:40x40 50x50



**H-148**  
Materials:304# / 316#  
Finish:SSS / PSS / TI  
SIZE:Φ38 Φ51

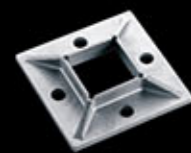
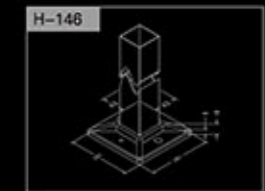


**H-149**  
Materials:304# / 316#  
Finish:SSS / PSS / TI  
SIZE:Φ38 Φ42 Φ51



**H-150**  
Materials:304# / 316#  
Finish:SSS / PSS / TI  
SIZE:Φ38 Φ42 Φ51

STAIR RAIL SERIES  
Installation Diagram



**H-143**  
Materials:304# / 316#  
Finish:SSS / PSS / TI  
SIZE:40x40



**H-144**  
Materials:304# / 316#  
Finish:SSS / PSS / TI  
SIZE:40x40 50x50



**H-145**  
Materials:304# / 316#  
Finish:SSS / PSS / TI  
SIZE:Φ38 Φ51







### H-151

Materials:304# / 316#  
Finish:SSS / PSS / TI  
SIZE:Φ38 Φ42 Φ51



### H-152

Materials:304# / 316#  
Finish:SSS / PSS / TI  
SIZE:Φ38 Φ42 Φ51



### H-153

Materials:304# / 316#  
Finish:SSS / PSS / TI  
SIZE:Φ38 Φ42 Φ51



### H-154

Materials:304# / 316#  
Finish:SSS / PSS / TI  
SIZE:Φ38 Φ42 Φ51



### H-155

Materials:304# / 316#  
Finish:SSS / PSS / TI  
SIZE:Φ38 Φ42 Φ51



### H-156

Materials:304# / 316#  
Finish:SSS / PSS / TI  
SIZE:Φ38 Φ42 Φ51



### H-157

Materials:304# / 316#  
Finish:SSS / PSS / TI  
SIZE:Φ38 Φ42 Φ51



### H-158

Materials:304# / 316#  
Finish:SSS / PSS / TI  
SIZE:Φ38 Φ42 Φ51



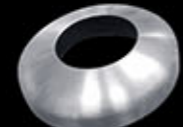
### H-159

Materials:304# / 316#  
Finish:SSS / PSS / TI  
SIZE:Φ38 Φ42 Φ51



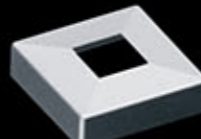
### H-160

Materials:304# / 316#  
Finish:SSS / PSS / TI  
SIZE:Φ12.7 Φ16 Φ25 Φ38 Φ51



### H-161

Materials:304# / 316#  
Finish:SSS / PSS / TI  
SIZE:Φ38 Φ42 Φ51



### H-162

Materials:304# / 316#  
Finish:SSS / PSS / TI  
SIZE:40x40 50x50



### H-163

Materials:304# / 316#  
Finish:SSS / PSS / TI



### H-164

Materials:304# / 316#  
Finish:SSS / PSS / TI



### H-165

Materials:304# / 316#  
Finish:SSS / PSS / TI  
SIZE:Φ50.8



### H-166

Materials:304# / 316#  
Finish:SSS / PSS / TI  
SIZE:40x40 50x50



### H-167

Materials:304# / 316#  
Finish:SSS / PSS / TI  
SIZE:40x40 50x50



### H-168

Materials:304# / 316#  
Finish:SSS / PSS / TI  
SIZE:40x40 50x50



### H-169

Materials:304# / 316#  
Finish:SSS / PSS / TI  
SIZE:Φ50.8



### H-170

Materials:304# / 316#  
Finish:SSS / PSS / TI  
SIZE:Φ50.8



### H-171

Materials:304# / 316#  
Finish:SSS / PSS / TI  
SIZE:Φ50.8





**H-172**

Materials:304# / 316#  
Finish:SSS / PSS / TI  
SIZE:50x40



**H-173**

Materials:304# / 316#  
Finish:SSS / PSS / TI  
SIZE:50x40 63x45 60x45



**H-174**

Materials:304# / 316#  
Finish:SSS / PSS / TI



**H-175**

Materials:304# / 316#  
Finish:SSS / PSS / TI  
SIZE:45x45 55x55



**H-176**

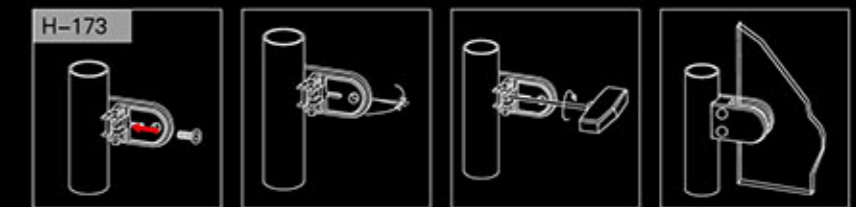
Materials:304# / 316#  
Finish:SSS / PSS / TI  
SIZE:45x45



**H-177**

Materials:304# / 316#  
Finish:SSS / PSS / TI

STAIR RAIL SERIES  
Installation Diagram







**H-178**

Materials:304# / 316#  
Finish:SSS / PSS / TI



**H-179**

Materials:304# / 316#  
Finish:SSS / PSS / TI  
SIZE:100x45



**H-180**

Materials:304# / 316#  
Finish:SSS / PSS / TI



**H-181**

Materials:304# / 316#  
Finish:SSS / PSS / TI  
SIZE:Φ60



**H-182**

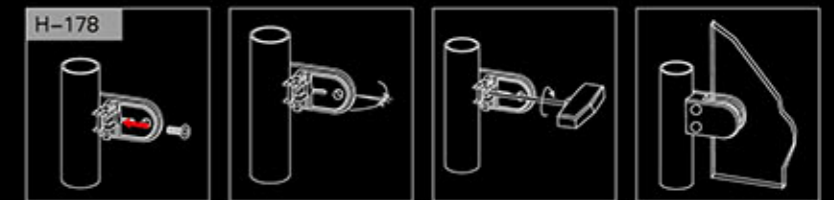
Materials:304# / 316#  
Finish:SSS / PSS / TI  
SIZE:Φ30



**H-183**

Materials:304# / 316#  
Finish:SSS / PSS / TI

STAIR RAIL SERIES  
Installation Diagram







**H-184**

Materials:304# / 316#  
Finish:SSS / PSS / TI  
SIZE:Φ38 Φ42 Φ51



**H-185**

Materials:304# / 316#  
Finish:SSS / PSS / TI  
SIZE:Φ38 Φ42 Φ51



**H-186**

Materials:304# / 316#  
Finish:SSS / PSS / TI  
SIZE:Φ38 Φ42 Φ51



**H-192**

Materials:304# / 316#  
Finish:SSS / PSS / TI  
SIZE:Φ38 Φ42 Φ51



**H-193**

Materials:304# / 316#  
Finish:SSS / PSS / TI  
SIZE:Φ16 Φ25 Φ32 Φ38 Φ51



**H-194**

Materials:304# / 316#  
Finish:SSS / PSS / TI  
SIZE:Φ38 Φ42 Φ51



**H-187**

Materials:304# / 316#  
Finish:SSS / PSS / TI  
SIZE:Φ38 Φ51 Φ63 Φ76 Φ89



**H-187A**

Materials:304# / 316#  
Finish:SSS / PSS / TI  
SIZE:Φ38 Φ51 Φ63 Φ76 Φ89



**H-188A**

Materials:304# / 316#  
Finish:SSS / PSS / TI  
SIZE:Φ38 Φ51



**H-195**

Materials:304# / 316#  
Finish:SSS / PSS / TI  
SIZE:Φ16 Φ25 Φ32 Φ38 Φ51



**H-196**

Materials:304# / 316#  
Finish:SSS / PSS / TI  
SIZE:Φ16 Φ25 Φ32 Φ38 Φ51



**H-197**

Materials:304# / 316#  
Finish:SSS / PSS / TI  
SIZE:Φ25



**H-188**

Materials:304# / 316#  
Finish:SSS / PSS / TI  
SIZE:40x40 50x50



**H-189**

Materials:304# / 316#  
Finish:SSS / PSS / TI  
SIZE:40x40 50x50



**H-189A**

Materials:304# / 316#  
Finish:SSS / PSS / TI  
SIZE:Φ38 Φ51



**H-198**

Materials:304# / 316#  
Finish:SSS / PSS / TI  
SIZE:Φ16 Φ25 Φ32 Φ38 Φ51



**H-199**

Materials:304# / 316#  
Finish:SSS / PSS / TI  
SIZE:Φ16 Φ25 Φ32 Φ38 Φ51



**H-190**

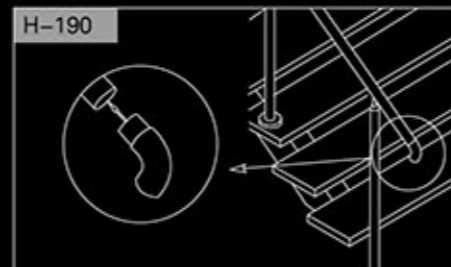
Materials:304# / 316#  
Finish:SSS / PSS / TI  
SIZE:Φ38 Φ42 Φ51 Φ63



**H-191**

Materials:304# / 316#  
Finish:SSS / PSS / TI  
SIZE:Φ38 Φ42 Φ51

STAIR RAIL SERIES  
Installation Diagram



**H-200**

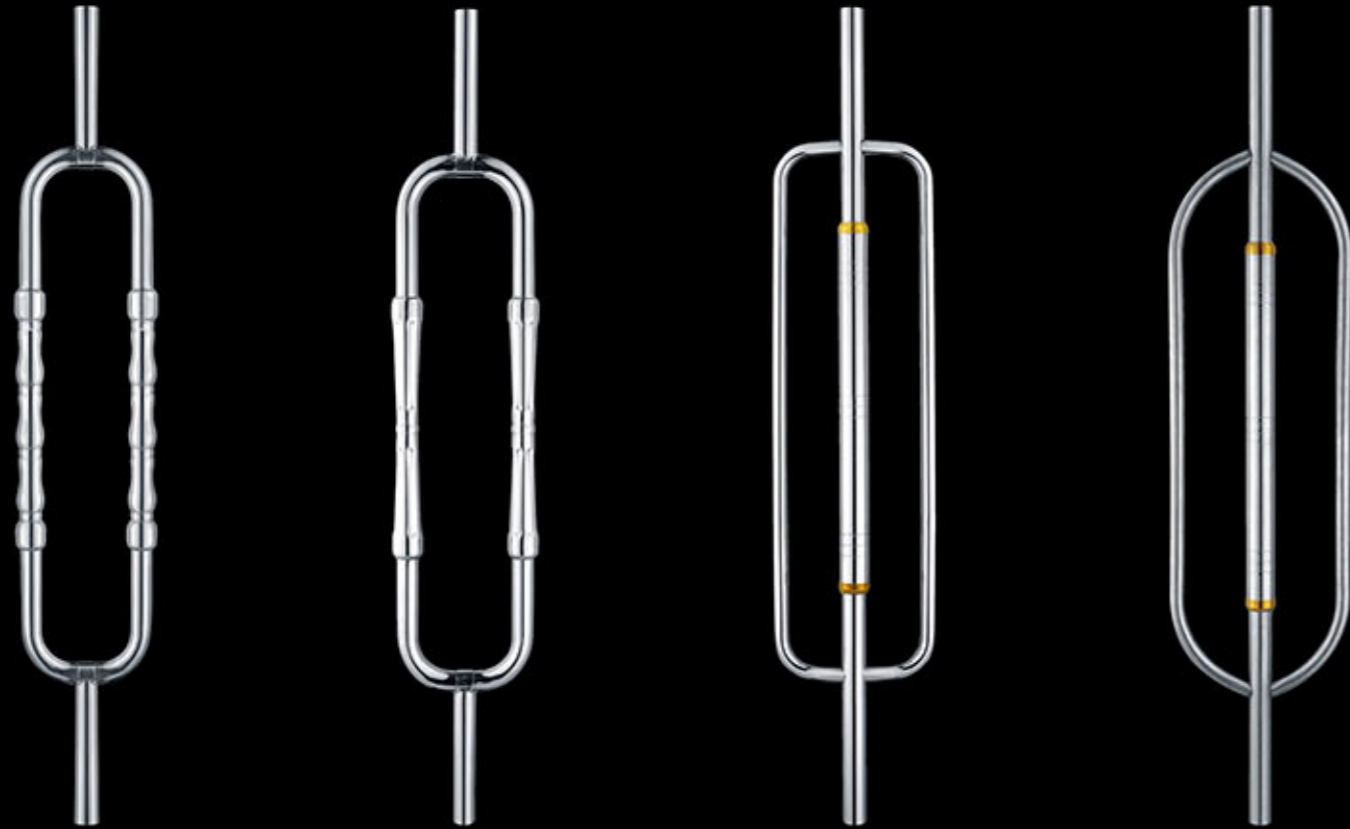
Materials:304# / 316#  
Finish:SSS / PSS / TI



**H-201**

Materials:304# / 316#  
Finish:SSS / PSS / PVD





**H-202**

Materials:304# / 316#  
Finish:SSS / PSS / TI  
SIZE:850mm 900mm 1000mm

**H-203**

Materials:304# / 316#  
Finish:SSS / PSS / TI  
SIZE:850mm 900mm 1000mm

**H-204**

Materials:304# / 316#  
Finish:SSS / PSS / TI  
SIZE:850mm 900mm 1000mm

**H-205**

Materials:304# / 316#  
Finish:SSS / PSS / TI  
SIZE:850mm 900mm 1000mm



**H-206**

Materials:304# / 316#  
Finish:SSS / PSS / TI



**H-207**

Materials:304# / 316#  
Finish:SSS / PSS / TI



**H-208A**

Materials:304# / 316#  
Finish:SSS / PSS / TI



**H-208**

Materials:304# / 316#  
Finish:SSS / PSS / TI



**H-209**

Materials:304# / 316#  
Finish:SSS / PSS / TI





**H-210**  
Materials:304# / 316#  
Finish:SSS / PSS / TI



**H-211**  
Materials:304# / 316#  
Finish:SSS / PSS / TI



**H-212**  
Materials:304# / 316#  
Finish:SSS / PSS / TI



**H-213**  
Materials:304# / 316#  
Finish:SSS / PSS / TI



**H-214**  
Materials:304# / 316#  
Finish:SSS / PSS / TI



**H-215**  
Materials:304# / 316#  
Finish:SSS / PSS / TI



**H-216**  
Materials:304# / 316#  
Finish:SSS / PSS / TI



**H-217**  
Materials:304# / 316#  
Finish:SSS / PSS / TI



**H-218**  
Materials:304# / 316#  
Finish:SSS / PSS / TI



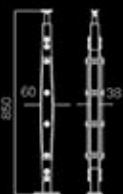






### H-219

Materials:304# / 316#  
Finish:SSS / PSS / TI  
Function: Railing



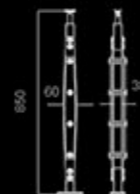
### H-220

Materials:304# / 316#  
Finish:SSS / PSS / TI  
Function: Railing



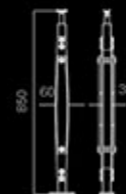
### H-221

Materials:304# / 316#  
Finish:SSS / PSS / TI  
Function: Railing



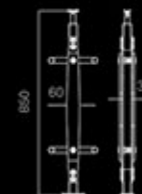
### H-222

Materials:304# / 316#  
Finish:SSS / PSS / TI  
Function: Railing



### H-223

Materials:304# / 316#  
Finish:SSS / PSS / TI  
Function: Railing



### H-224

Materials:304# / 316#  
Finish:SSS / PSS / TI  
Function: Railing

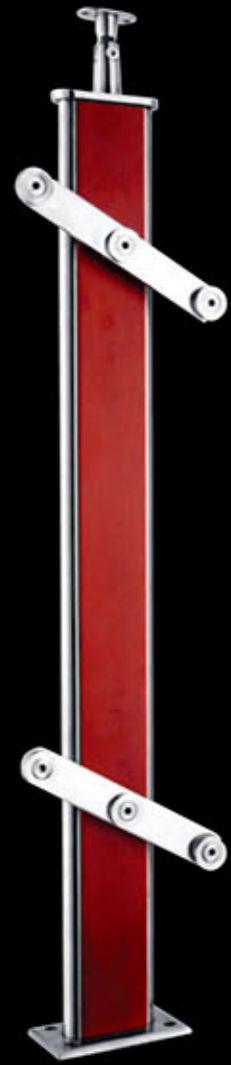






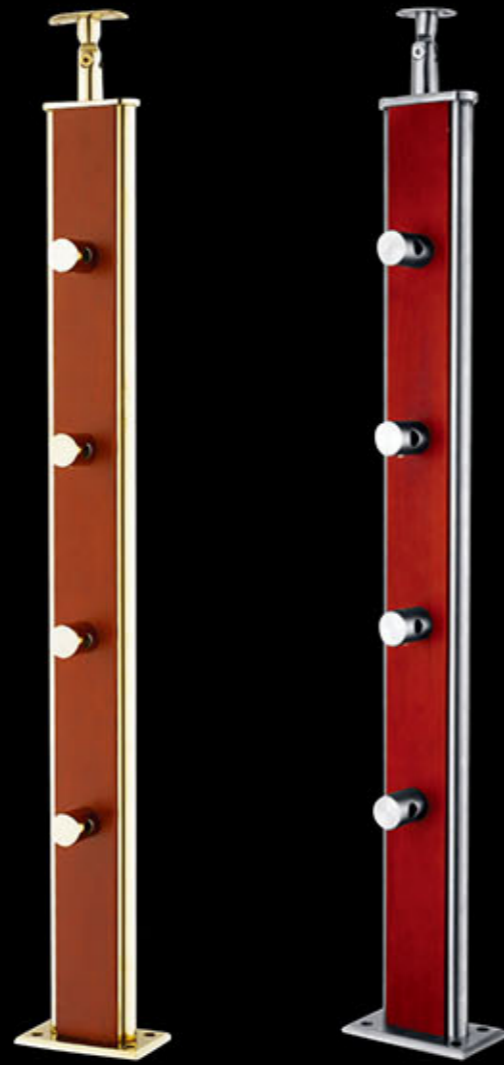
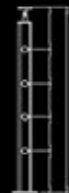
**H-225**

Materials:304# / 316#  
Finish:SSS / PSS / TI  
Function: Railing



**H-226**

Materials:304# / 316#  
Finish:SSS / PSS / TI  
Function: Railing



**H-227**

Materials:304# / 316#  
Finish:SSS / PSS / TI  
Function: Railing



**H-228**

Materials:304# / 316#  
Finish:SSS / PSS / TI  
Function: Railing

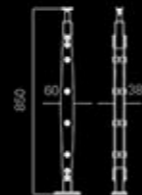






### H-229

Materials: 304# / 316#  
Finish: SSS / PSS / TI  
Function: Railing



### H-230

Materials: 304# / 316#  
Finish: SSS / PSS / TI  
Function: Railing



### H-231

Materials: 304# / 316#  
Finish: SSS / PSS / TI  
Function: Railing

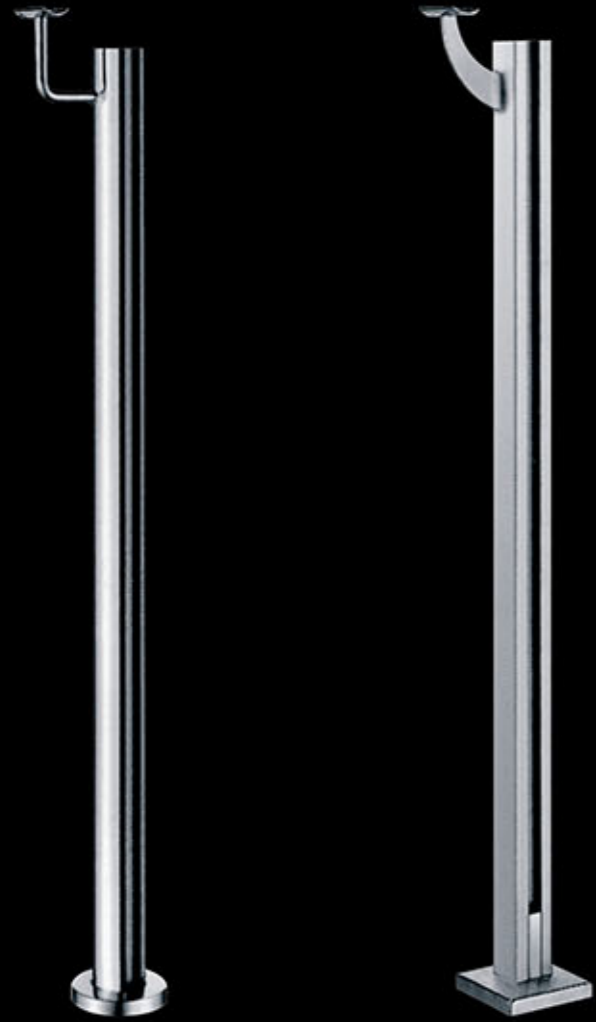


### H-232

Materials: 304# / 316#  
Finish: SSS / PSS / TI  
Function: Railing







STAIR RAIL SERIES  
Installation Diagram  
**H-233**



STAIR RAIL SERIES  
Installation Diagram  
**H-234**



**H-233**

Materials:304# / 316#  
Finish:SSS / PSS / TI  
Function: Railing



**H-234**

Materials:304# / 316#  
Finish:SSS / PSS / TI  
Function: Railing



**H-235**

Materials:304# / 316#  
Finish:SSS / PSS / TI  
Function: Railing



**H-236**

Materials:304# / 316#  
Finish:SSS / PSS / TI  
Function: Railing

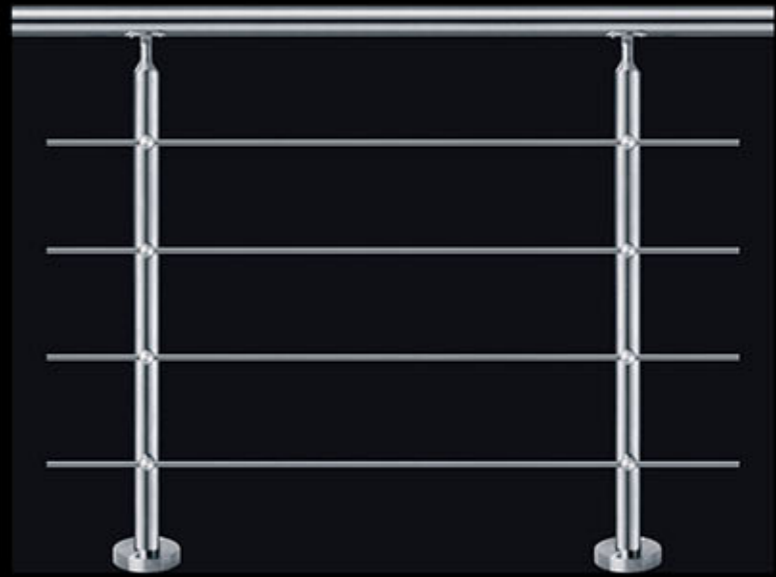


**H-237**

Materials:304# / 316#  
Finish:SSS / PSS / TI  
Function: Railing

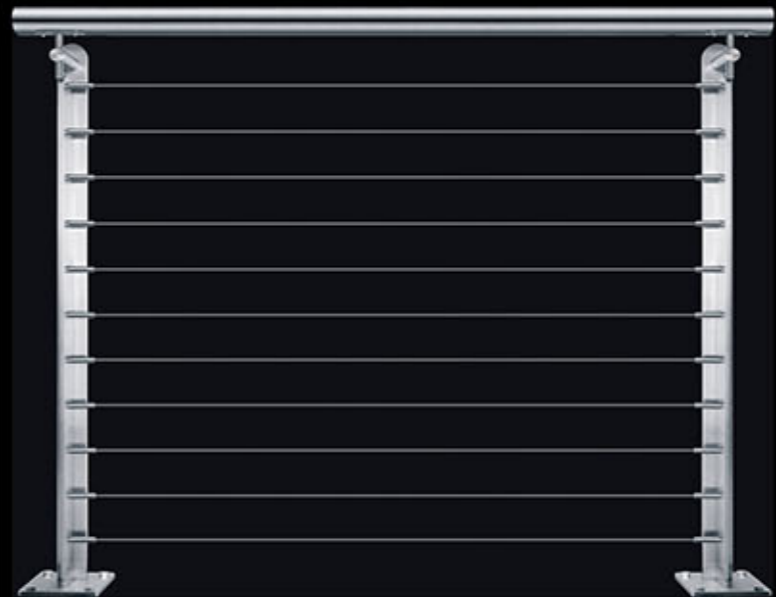






STAIR RAIL SERIES  
Installation Diagram

H-238



STAIR RAIL SERIES  
Installation Diagram

H-239



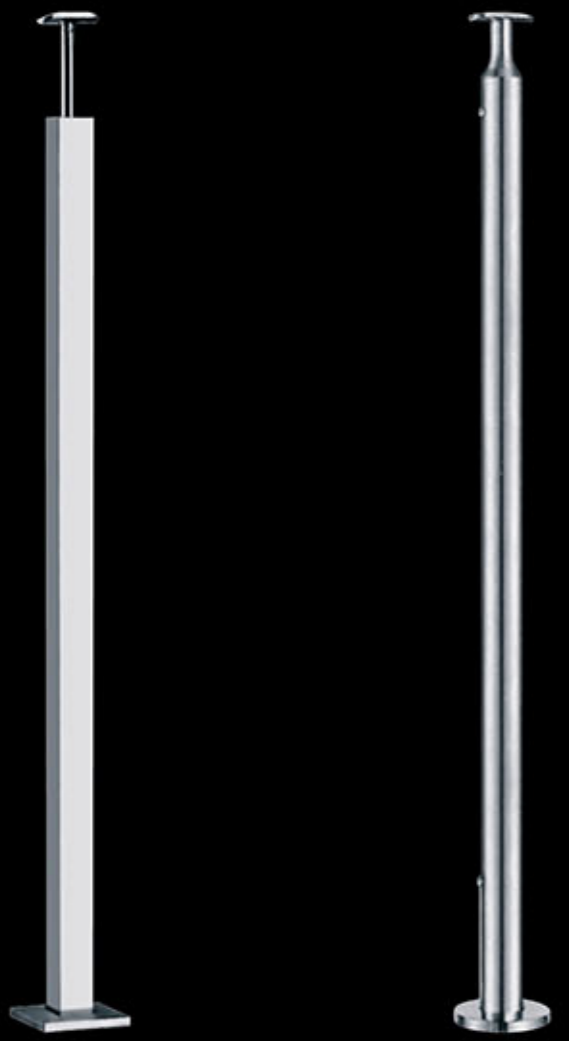
STAIR RAIL SERIES  
Installation Diagram

H-240

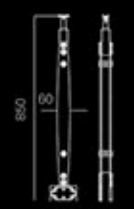


STAIR RAIL SERIES  
Installation Diagram

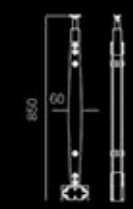
H-241



**H-240**  
Materials: 304# / 316#  
Finish: SSS / PSS / TI  
Function: Railing



**H-241**  
Materials: 304# / 316#  
Finish: SSS / PSS / TI  
Function: Railing

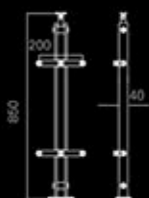






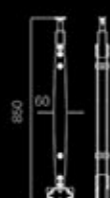
### H-242

Materials:304# / 316#  
Finish:SSS / PSS / TI  
Function: Railing



### H-243

Materials:304# / 316#  
Finish:SSS / PSS / TI  
Function: Railing



### H-244

Materials:304# / 316#  
Finish:SSS / PSS / TI  
Function: Railing



### H-245

Materials:304# / 316#  
Finish:SSS / PSS / TI  
Function: Railing



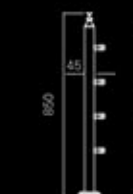
### H-246

Materials:304# / 316#  
Finish:SSS / PSS / TI  
Function: Railing



### H-247

Materials:304# / 316#  
Finish:SSS / PSS / TI  
Function: Railing







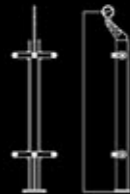
**H-248**

Materials:304# / 316#  
Finish:SSS / PSS / TI  
Function: Railing



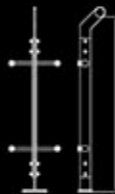
**H-249**

Materials:304# / 316#  
Finish:SSS / PSS / TI  
Function: Railing



**H-250**

Materials:304# / 316#  
Finish:SSS / PSS / TI  
Function: Railing



**H-251**

Materials:304# / 316#  
Finish:SSS / PSS / TI  
Function: Railing



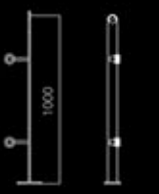
**H-252**

Materials:304# / 316#  
Finish:SSS / PSS / TI  
Function: Railing

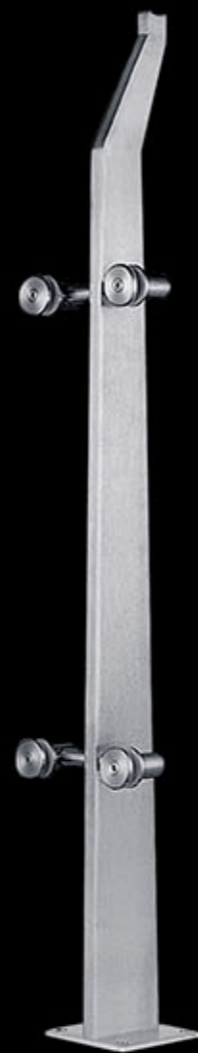


**H-253**

Materials:304# / 316#  
Finish:SSS / PSS / TI  
Function: Railing







**H-254**

Materials:304# / 316#  
Finish:SSS / PSS / TI  
Function: Railing



**H-255**

Materials:304# / 316#  
Finish:SSS / PSS / TI  
Function: Railing

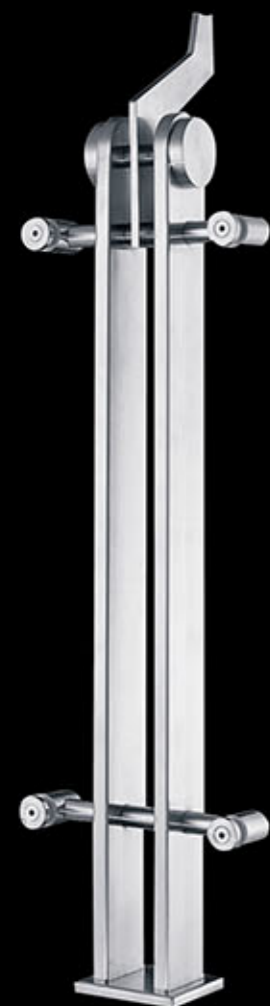


**H-256**

Materials:304# / 316#  
Finish:SSS / PSS / TI  
Function: Railing







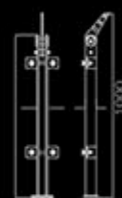
### H-257

Materials:304# / 316#  
Finish:SSS / PSS / TI  
Function: Railing



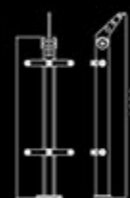
### H-258

Materials:304# / 316#  
Finish:SSS / PSS / TI  
Function: Railing



### H-259

Materials:304# / 316#  
Finish:SSS / PSS / TI  
Function: Railing



### H-260

Materials:304# / 316#  
Finish:SSS / PSS / TI  
SIZE:Φ38 Φ51



### H-261

Materials:304# / 316#  
Finish:SSS / PSS / TI  
SIZE:Φ38 Φ51



### H-262

Materials:304# / 316#  
Finish:SSS / PSS / TI



### H-263

Materials:304# / 316#  
Finish:SSS / PSS / TI



### H-264

Materials:304# / 316#  
Finish:SSS / PSS / TI



### H-265

Materials:304# / 316#  
Finish:SSS / PSS / TI



### H-266

Materials:304# / 316#  
Finish:SSS / PSS / TI  
SIZE:Φ38 Φ51



### H-267

Materials:304# / 316#  
Finish:SSS / PSS / TI  
SIZE:Φ38 Φ51



### H-268

Materials:304# / 316#  
Finish:SSS / PSS / TI  
SIZE:Φ38 Φ51





H-269



H-270



H-271



H-272



H-273



H-274





H-275



H-276



H-277



H-284



H-285



H-286



H-278



H-279



H-280



H-287



H-288



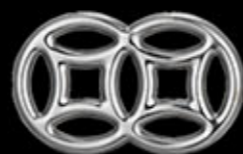
H-289



H-281



H-282



H-283



H-290



H-291



H-292





H-293



H-294



H-295



H-300



H-301



H-302



H-296



H-297



H-303



H-304



H-305



H-298



H-299



H-306



H-307



H-308





H-309



H-310



H-311



H-318



H-319



H-320



H-312



H-313



H-314



H-321



H-322



H-323



H-315



H-316



H-317



H-324



H-325





H-326



H-327



H-328



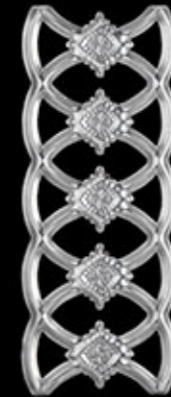
H-329



H-338



H-339



H-340



H-341



H-330



H-331



H-332



H-333



H-342



H-343



H-344



H-345



H-334



H-335



H-336



H-337





H-346



H-347



H-348



H-349



H-350



H-351



H-352





H-353



H-354



H-355



H-362



H-363



H-364



H-365



H-356



H-357



H-358



H-366



H-367



H-368



H-359



H-360



H-361



H-369



H-370



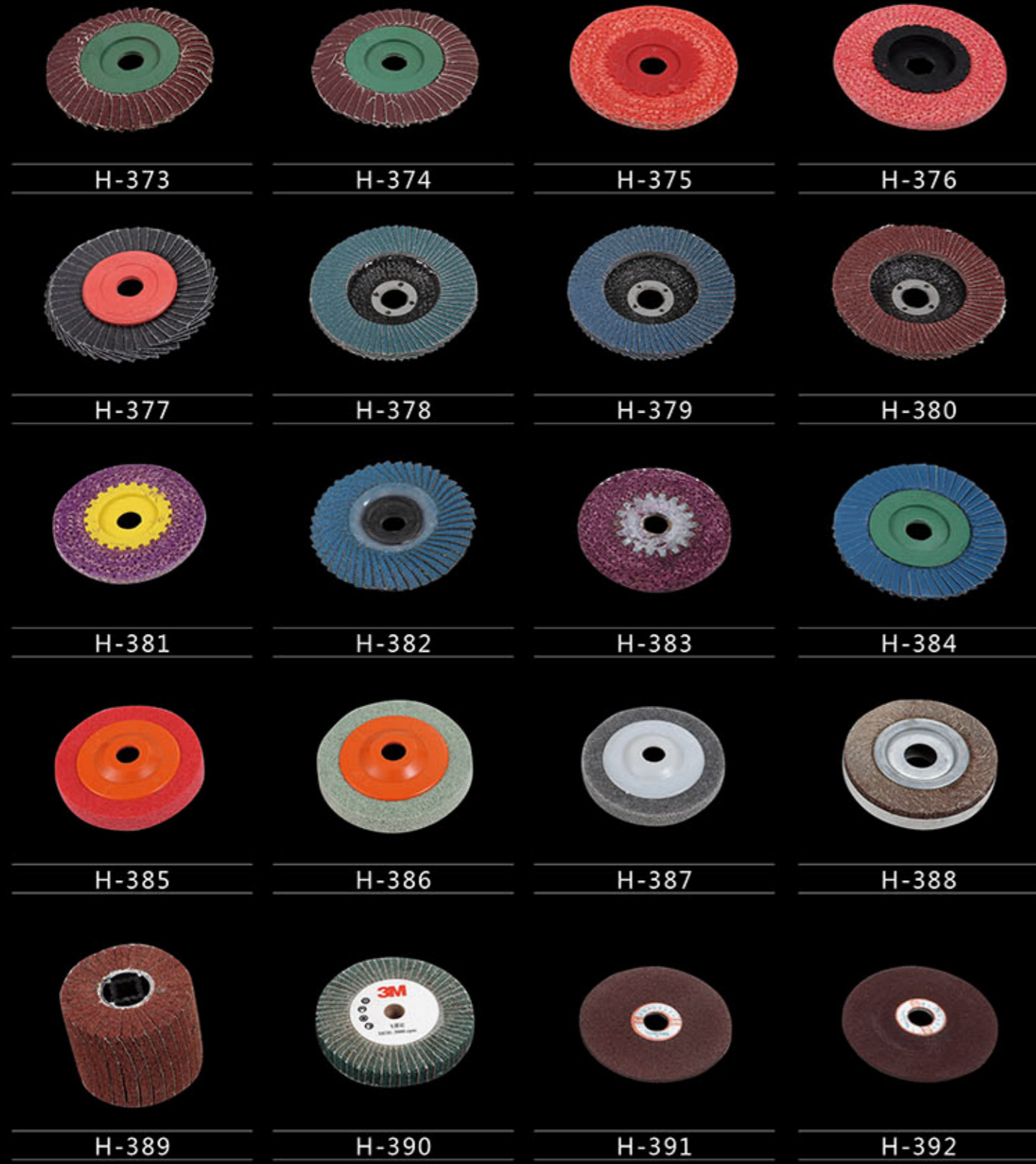
H-371



H-372

### 佛山市南海区汇德兴不锈钢管重量表

牌号：汇德兴 304 材质：304 表面光洁度：SB400# 长度：6米 单位：KG/支



厚度 直径	0.28 (0.5)	0.33 (0.6)	0.42 (0.7)	0.51 (0.8)	0.61 (0.9)	0.71 (1.00)	0.81 (1.10)	0.91 (1.20)	1.10 (1.50)	1.5 (2.0)	0.25 (0.5)	0.3 实厚	0.38 实厚
Φ9.5	0.38	0.46	0.56	0.70	0.83	0.96	1.08	1.2	1.4	1.9			0.52
Φ12.7	0.52	0.60	0.76	0.94	1.12	1.30	1.47	1.6	2.0	2.6			
Φ16	0.66	0.74	0.96	1.19	1.42	1.65	1.87	2.1	2.5	3.4			
Φ19	0.79	0.92	1.15	1.42	1.69	1.97	2.23	2.5	3.0	4.0	0.7	0.84	1.06
Φ22	0.91	1.07	1.33	1.65	1.97	2.29	2.60	2.9	3.5	4.7	0.8	0.98	1.23
Φ25	1.04	1.22	1.51	1.88	2.24	2.61	2.96	3.3	4.0	5.4	0.9	1.11	1.40
Φ31.8	1.32	1.56	1.93	2.40	2.86	3.33	3.78	4.2	5.1	6.9		1.42	1.79
Φ38		1.86	2.31	2.87	3.43	3.99	4.53	5.1	6.1	8.3			2.14
Φ50.8			3.09	3.84	4.59	5.34	6.08	6.8	8.2	11.2			
Φ63			3.84	4.77	5.70	6.64	7.56	8.5	10.2	13.9			
Φ76					6.89	8.02	9.13	10.2	12.4	16.8			
Φ89					8.07	9.40	10.70	12.0	14.5	19.7			
Φ102		5.02	6.23	7.75	9.26	10.78	12.28	13.8	16.6	22.6			
□ 20X10	0.61	0.91	1.13	1.41	1.68	1.96	2.24	2.5	3.0	4.1		0.83	1.05
□ 19X19	0.99	1.16	1.44	1.80	2.15	2.50	2.85	3.2	3.9	5.3	0.9	1.06	1.34
□ 22X22	1.15	1.35	1.68	2.09	2.50	2.91	3.31	3.7	4.5	6.1		1.23	1.55
□ 25X25	1.31	1.54	1.91	2.38	2.84	3.31	3.78	4.2	5.1	7.0		1.40	1.77
□ 30X30		1.85	2.30	2.86	3.42	3.99	4.55	5.1	6.2	8.4			2.13
□ 38X38			2.93	3.64	4.35	5.07	5.78	6.5	7.9	10.7			2.71
□ 50X50			3.86	4.80	5.75	6.69	7.63	8.6	10.4	14.1			
□ 20X10	0.77	0.91	1.13	1.41	1.68	1.96	2.24	2.5	3.0	4.1			
□ 25X13	0.99	1.16	1.44	1.80	2.15	2.50	2.85	3.2	3.9	5.3			1.34
□ 30X15	1.17	1.38	1.72	2.14	2.55	2.97	3.39	3.8	4.6	6.3			1.59
□ 38X25			2.42	3.01	3.60	4.19	4.78	5.4	6.5	8.8			
□ 50X25					4.30	5.00	5.70	6.4	7.7	10.6			
□ 75X45					6.91	8.04	9.17	10.3	12.5	17.0			
□ 95X45					8.07	9.39	10.71	12.0	14.5	19.8			
Φ17	0.70	0.83	1.02	1.27	1.51	1.76	1.99	2.2	2.7	3.6	0.6	0.75	0.95
Φ18	0.74	0.87	1.09	1.35	1.60	1.86	2.11	2.4	2.8	3.8	0.7	0.80	1.01
Φ20.2	0.84	0.98	1.22	1.51	1.80	2.10	2.38	2.7	3.2	4.3	0.7	0.90	1.13
Φ23	0.95	1.12	1.39	1.73	2.06	2.40	2.72	3.0	3.7	4.9			1.29
Φ28	1.16	1.37	1.70	2.11	2.51	2.93	3.32	3.7	4.5	6.0			
Φ36	1.5	1.76	2.19	2.72	3.24	3.77	4.29	4.8	5.8	7.8			
Φ48		2.35	2.92	3.63	4.34	5.05	5.74	6.4	7.8	10.5			
Φ60		2.95	3.66	4.55	5.43	6.32	7.19	8.1	9.7	13.2			
□ 23X23	1.2	1.41	1.76	2.18	2.61	3.04	3.47	3.9	4.7	6.4			1.63
□ 24X24		1.48	1.83	2.28	2.73	3.18	3.62	4.1	4.9	6.7			
□ 28X28		1.73	2.15	2.67	3.19	3.72	4.24	4.8	5.8	7.9			
□ 36X36		2.23	2.77	3.45	4.12	4.80	5.47	6.1	7.4	10.1			
□ 23X11	0.88	1.04	1.29	1.60	1.92	2.23	2.54	2.9	3.5	4.7			
□ 24X12		1.10	1.37	1.70	2.03	2.36	2.70	3.0	3.7	5.0			
□ 28X12			1.52	1.89	2.26	2.63	3.01	3.4	4.1	5.6			
□ 36X23			2.26	2.81	3.37	3.92	4.47	5.0	6.1	8.3			
□ 60X30					5.17	6.01	6.86	7.7	9.3	12.7			
□ 60X40					5.75	6.69	7.63	8.6	10.4	14.1			