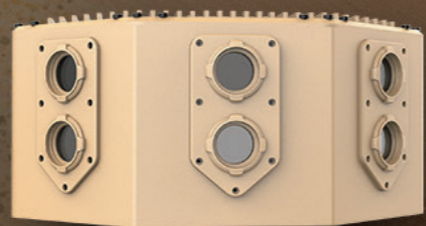


# ZX-NV-6H Series Vision-enhanced Night Vision Device



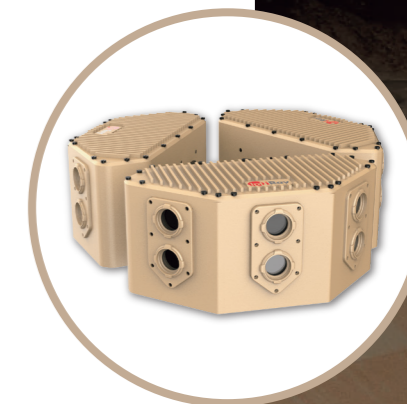
## ZX-NV-6H Series Vision-enhanced Night Vision Device

SPIKE-J Panoramic Stitching Vision-enhanced Night Vision Device is equipped with multiple infrared and visible light sensors to provide multi-spectral wide FOV through seamless image mosaic technology. It can integrate AI platform to detect and classify targets to realize accurate target detection and recognition, thus greatly improving the situational awareness capability. SPIKE-J can be widely used in such fields as driving assistance, reconnaissance, surveillance, force protection, and urban patrol.

### Specifications

		ZX-NV-6H (Default Version)	ZX-NVS-6H (Smart Version)	
Infrared	Type	Uncooled	Uncooled	
	Pixel pitch	12μm	12μm	
	Resolution	640×512	640×512	
	FOV	130°×40°	130°×40°	
Visible light	Pixel pitch	2.9μm	2.9μm	
	Resolution	1920×1080	1920×1080	
	FOV	130°×29°	130°×29°	
Interface	Video interface	SDI	SDI/H.264 encoded	
	FPS	25	25	
	Power supply	18-36VDC	18-36VDC	
	Communication	CAN	CAN	
Target recognition	---	Unavailable	Available	
Operating distance	Recognition distance	Person	200m(infrared), 300m(visible light)	200m(infrared), 300m(visible light)
		Vehicle	260m(infrared), 400m(visible light)	260m(infrared), 400m(visible light)
Appearance	Dimension	260×130×120mm	260×130×120mm	
	Weight	<3.5kg	<4kg	
Environment	Operating temperature	-40°C~+60°C	-40°C~+60°C	
	Shock	40g	40g	
	Waterproof grade	IP67	IP67	

Note: Human target 1.7 m×0.5 m; vehicle target 2.3 m×2.3 m.



### Features

- Seamless image
- Intelligent sensing
- All-weather operation
- "Infrared + visible light" dual-spectral fusion
- Ultra-wide FOV (support 360°)



### Operating distance

