

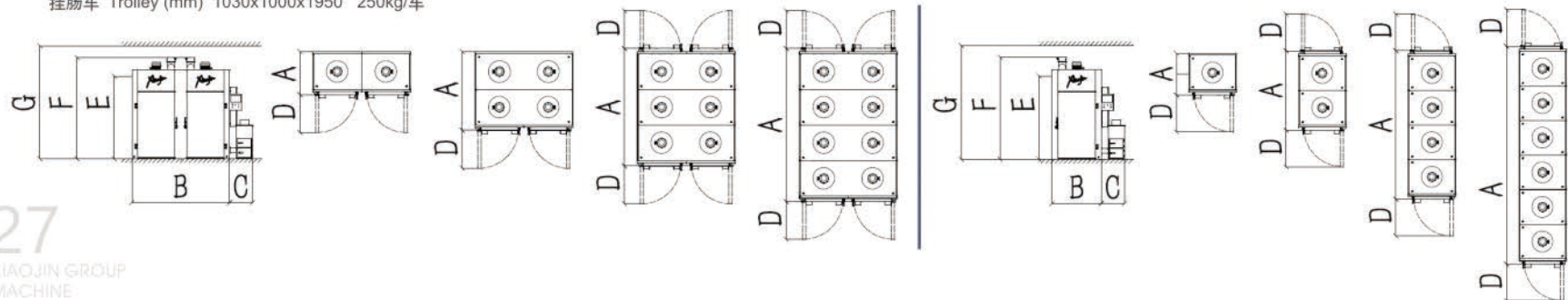
标准型号蒸汽加热烟熏炉 Standard Steam Smokehouse	单排 Single Channel					双排 Double Channel			
型号 Model	YXQ1/1	YXQ1/2	YXQ2/2	YXQ1/4	YXQ2/4	YXQ2/2T	YXQ2/4T	YXQ4/4T	YXQ2/6T
挂车数量 Trolley	1	2	2	4	4	2	4	4	6
总功率 Motor (kw)	5.5	9.5	9.5	17.5	17.5	9.5	17.5	17.5	25.5
蒸汽 steam supply $\leq 0.6\text{Mpa}$ kg/h	70	140	140	280	280	140	280	280	420
水 water supply $\leq 0.4\text{Mpa}$ L/h	15	15	15	15	15	15	15	15	15
压缩空气 compressed air supply Mpa	0.6	0.6	0.6	0.6	0.6	0.6	0.6	0.6	0.6
A(mm) 炉长 Length	1335	2450	2540	4660	4750	1335	2450	2540	3650
B(mm) 炉宽 Width	1520	1520	1520	1520	1520	3050	3050	3050	3050
C(mm) 发烟器宽度 Width of Smoke Generator	500	500	500	500	500	500	500	500	500
D(mm) 开门长度 Length After Opening the door	1180	1180	1180	1180	1180	1180	1180	1180	1180
E(mm) 炉净高 Net height	2660	2660	2660	2660	2660	2660	2660	2660	2660
F(mm) 炉最高尺寸 Total height	3140	3140	3140	3140	3140	3140	3140	3140	3140
G(mm) 房间最低高度 Height of the room	3500	3500	3500	3500	3500	3500	3500	3500	3500
重量 (KG) Weight	1350	2000	2100	3700	3800	1800	3500	4000	5000

标准型号电加热烟熏炉 Standard Electrical Smokehouse	单排 Single Channel					双排 Double Channel		
型号 Model	YXD1/1	YXD1/2	YXD2/2	YXD1/4	YXD2/4	YXD2/2T	YXD2/4T	YXD4/4T
挂车数量 Trolley	1	2	2	4	4	2	4	4
总功率 Motor (kw)	29	57.5	57.5	105.5	105.5	57.5	105.5	105.5
水 Water supply $\leq 0.4\text{Mpa}$ L/h	20	20	20	20	20	20	20	20
压缩空气 compressed air supply Mpa	0.6	0.6	0.6	0.6	0.6	0.6	0.6	0.6
A(mm) 炉长 Length	1335	2450	2540	4660	4750	1335	2450	2540
B(mm) 炉宽 Width	1520	1520	1520	1520	1520	3050	3050	3050
C(mm) 发烟器宽度 Width of Smoke Generator	500	500	500	500	500	500	500	500
D(mm) 开门长度 Length After Opening the door	1180	1180	1180	1180	1180	1180	1180	1180
E(mm) 炉净高 Net height	2660	2660	2660	2660	2660	2660	2660	2660
F(mm) 炉最高尺寸 Total height	3140	3140	3140	3140	3140	3140	3140	3140
G(mm) 房间最低高度 Height of the room	3500	3500	3500	3500	3500	3500	3500	3500
重量 (KG) Weight	1350	2000	2100	3700	3800	1800	3500	4000

蒸箱	单排 Single Channel					双排 Double Channel			
型号 Model	YXQ1/1x	YXD1/1x	YXQ2/2	YXQ2/4	YXQ2/4	YXQ2/2T	YXQ2/4T	YXQ4/4T	YXQ2/6T
挂车数量 Trolley	1	2	2	4	4	2	4	4	6
总功率 Motor (kw)	5.5	9.5	9.5	17.5	17.5	9.5	17.5	17.5	25.5
蒸汽 Steam supply $\leq 0.6\text{Mpa}$ kg/h	55	110	110	220	220	110	220	220	330
水 water supply $\leq 0.4\text{Mpa}$ L/h	15	15	15	15	15	15	15	15	15
压缩空气 compressed air supply Mpa	0.6	0.6	0.6	0.6	0.6	0.6	0.6	0.6	0.6
A(mm) 炉长 Length	1335	2450	2540	4660	4750	1335	2450	2540	3650
B(mm) 炉宽 Width	1520	1520	1520	1520	1520	3050	3050	3050	3050
C(mm) 发烟器宽度 Width of Smoke Generator	0	0	0	0	0	0	0	0	0
D(mm) 开门长度 Length After Opening the door	1180	1180	1180	1180	1180	1180	1180	1180	1180
E(mm) 炉净高 Net height	2660	2660	2660	2660	2660	2660	2660	2660	2660
F(mm) 炉最高尺寸 Total height	3140	3140	3140	3140	3140	3140	3140	3140	3140
G(mm) 房间最低高度 Height of the room	3500	3500	3500	3500	3500	3500	3500	3500	3500
重量 (KG) Weight	1150	1800	1900	3500	3600	1600	3300	3800	5100

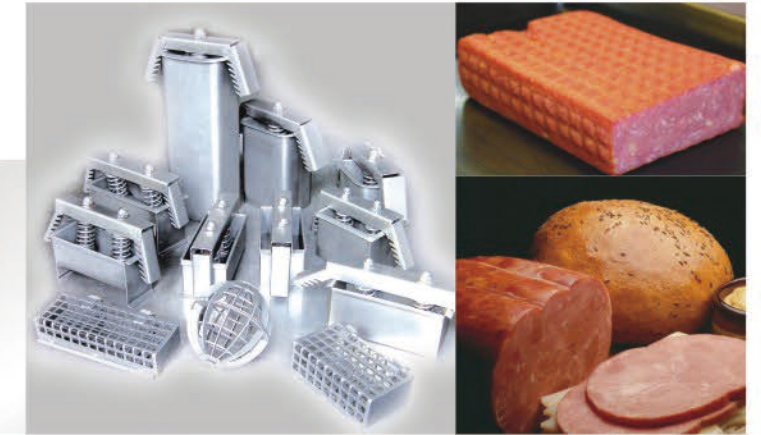
其他非标型号烟熏炉 Non-Standard Ovens	小型烟熏炉 Small Capacity Smokehouse	燃气烟熏炉 Gas Smokehouse	水平气流烟熏炉 Horizontal Air Low Smokehouse	强冷炉 Intensify Colding Oven	旋转烤炉 Rotation Oven	烘干除湿房 Drying Room	糖熏炉 Sugar Smokehouse						
型号 Model	YXQ1/1	YXD1/1	YXR2/2	YXR2/4	YXQS2/2	YXDS2/2	YXC2/2	YXC2/4	YXDX	YXB1/2	YXB2/2	YXB2/4	YXDT1/1
挂车数量 Trolley	1 非标	1 非标	2	4	2	2	2	4	1	2	2	4	1
总功率 Motor (kw)	2	10	9.5	17.5	9.5	57.5	13	21	26	6	6	12	25
蒸汽 steam supply $\leq 0.6\text{Mpa}$ kg/h	50	/	/	/	140	/	/	/	/	/	/	/	/
水 water supply $\leq 0.4\text{Mpa}$ L/h	5	5	5	5	5	5	5	5	/	/	/	/	/
压缩空气 compressed air supply Mpa	0.6	0.6	0.6	0.6	0.6	0.6	0.6	0.6	0.6	/	/	/	0.6
炉净尺寸 长度 mm Net Dimension Length	1100	1100	2440	4610	2540	2540	2540	4800	2400	2410	2410	4800	1310
炉净尺寸 宽度 mm Net Dimension Width	1500	1500	1520	1520	1700	1700	1600	1600	1850	1520	1520	1520	1520
炉净尺寸 高度 mm Net Dimension Height	2100	2100	2660	2660	2660	2660	2660	2660	2660	2660	2660	2660	2660
重量 (KG) Weight	850	850	3000	4200	3200	3100	2100	3800	1800	2300	2400	3500	1342

挂肠车 Trolley (mm) 1030x1000x1950 250kg/车



ZG

Cook Pan ZG煮锅



- 采用SUS304不锈钢材质。全不锈钢防腐材质的蒸煮筐，侧开盖式。
- 蒸煮锅系列有电加热、高/低压蒸汽加热、导热油加热几种形式，有单层和夹层结构。
- 温控系统有全自动控制和半自动控制两种方式。蒸煮锅特殊设计以保证锅内水温均匀的部件。
- 夹层保温处理结构，夹层钢性好，夹层内胆采用矿物棉保温材料，热损少，能耗少，保温效果好，厚度50mm，温度可达90℃。
- 采用热水浸浴加热方式，用于加工西式蒸煮肠、火腿、中式酱卤肉制品，也可作为包装产品巴士杀菌使用。是肉制品加工的首选蒸煮设备。
- Adopt SUS304 Stainless steel. All stainless steel cooking basket, flank cover.
- ZG Cooking pots series have steam-heating, electrical heating or electric transmit to heat the oil type, monolayer and double layer structure.
- Temperature control system has automatic and semi-auto control.
- The cooking pot have a special part for making even water temperature.
- Polyurethane froth preservation material, saving heat and enegy, good effect for heat preservation. Temperature can reach 90℃.
- Adopted bathing in hot water pattern, used for western steaming sausage, ham, chinese stewed meat also used for pasteurization first option choice for meat processing.

各种规格可根据要求定制 we can special-make any specification as clients' request.

