

白色家电通用型电源滤波器 YHDQ-GT-XX

Universal EMI Filter in White Household Appliances

特点与用途

- ◆ 低泄漏电流, 结构小巧紧凑, 便于安装;
- ◆ 150K~30MHz卓越的EMI滤波性能;
- ◆ 广泛应用于冰箱、洗衣机、冷柜、空调、洗碗机等家电系列产品。

Features & Applications

- ◆ Low leakage current, compact instructure and easy for installing.
- ◆ Excellent performance of EMI filter (150K~30MHz).
- ◆ Widely applied in household appliances, such as refrigerator, Washing machine, freezer, air-conditioning, dish washer, etc.



认证 Certification

	中国 China	CQC 19001221487		欧盟 European Union	R50437711
--	-------------	-----------------	--	----------------------	-----------

技术参数 Technical Parameter

额定电流 Rated current	1A~16A@40℃	绝缘电阻 Insulation resistance	线-地(L-G) 500VDC≥100MΩ
额定电压 Rated voltage	0~250Vac	高压测试 High-voltage test	线-线(L-L) 1075 VDC 1min 线-地(L-G) 2000 VAC 1min
泄漏电流 Leakage current	120VAC 50Hz:0.75mA Max 250VAC 50Hz:1.50mA Max	工作频率 Operating frequency	50/60Hz

电路原理图 Schematic

YHDQ-GT系列产品的编码定义。
Code Definition of YHDQ-GT series

YHDQ-GT-XX

说明: YHDQ-GT: 裕华电器产品系列编号。
Remark: YHDQ-GT: YUHUA Product code

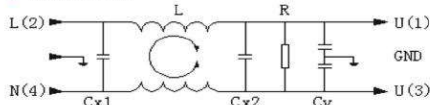
第1个X: 表示电路图 (可使用数字0~9表示)

The first X: electrical schematic (0-9)

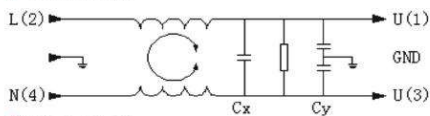
第2个X: 表示客户识别号 (可使英文字母A~Z或数字0~9或空格表示)

The second X: customer's identify number (A-Z or 0-9 or blank space)

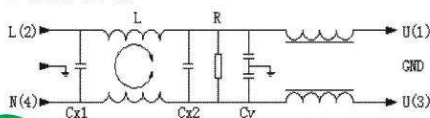
YHDQ-GT-0X



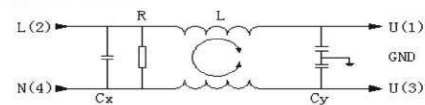
YHDQ-GT-2X



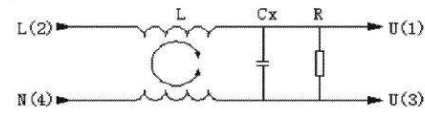
YHDQ-GT-4X



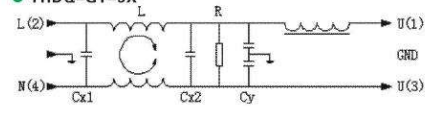
YHDQ-GT-1X



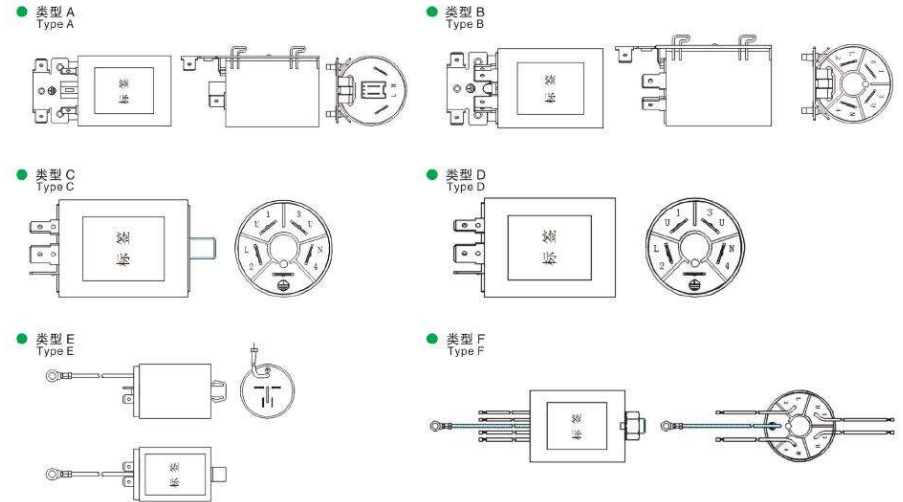
YHDQ-GT-3X



YHDQ-GT-5X



外形图 Outline Drawing



常用规格 Specification

常用型号 Common Type	L1 mH	Cx1 μF	Cx2 μF	CY μF	R kΩ	适用外形 Suitable Shape	额定电流 (A) Rated Current
YHDQ-GT-0X	0.5~10mH	0.1~1μF	0.1~1μF	0~27nF	0~2200kΩ	A,B,C,D,E,F	1, 3, 6, 8 10, 12, 16
YHDQ-GT-1X	0.5~10mH	0.1~1μF	/	0~27nF	0~2200kΩ	A,B,C,D,E,F	1, 3, 6, 8 10, 12, 16
YHDQ-GT-2X	0.5~10mH	/	0.1~1μF	0~27nF	0~2200kΩ	A,B,C,D,E,F	1, 3, 6, 8 10, 12, 16
YHDQ-GT-3X	0.5~10mH	/	0.1~1μF	/	0~2200kΩ	A,B,C,D,E,F	1, 3, 6, 8 10, 12, 16
YHDQ-GT-4X	0.5~10mH	0.1~1μF	0.1~1μF	0~27nF	0~2200kΩ	F	1, 3, 6, 8, 10
YHDQ-GT-5X	0.5~10mH	0.1~1μF	0.1~1μF	0~27nF	0~2200kΩ	E,F	1, 3, 6, 8, 10

备注:

- 1、表中所列尺寸为公司常用规格尺寸, 其他规格尺寸均可按照客户要求生产;
- 2、表中数据若有更改恕不另行通知;
- 3、可提供整机EMC整改测试方案和技术支持。

REMARKS

1. The dimension on the above chart is our common specifications, we can produce as customer's requests.
2. The datas are subject to change without notice.
3. We can recommend the selection and provide the EMC rectification test solution and technical support.