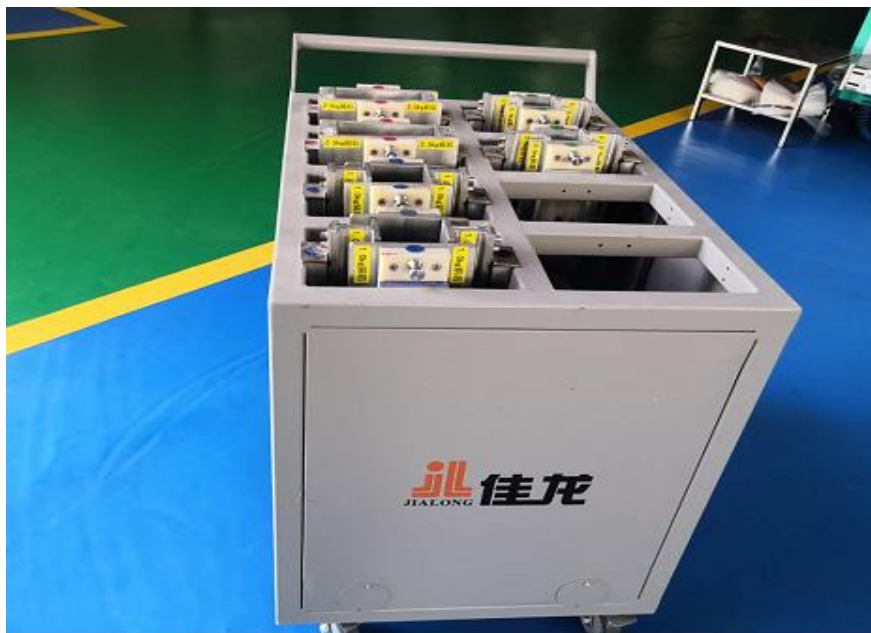




i. Machine and spare parts

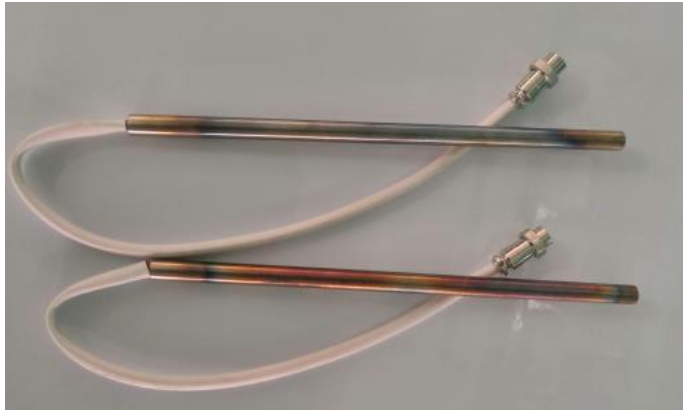
The complete set of machine includes:

- 1) The machine body and conveyor**
- 2) One sets of moulds tool car: 3 sets of our standard size mould (0.5kg, 1kg and 2.5kg)**

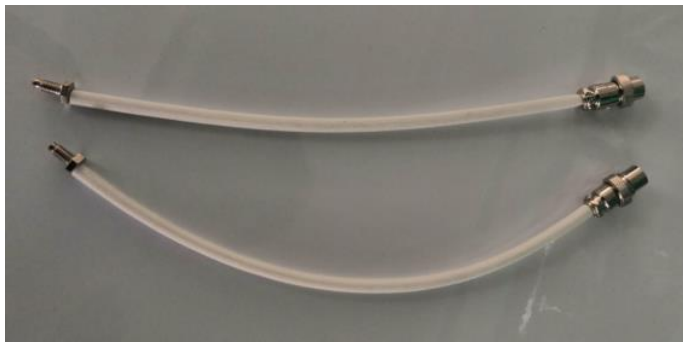


3) Spare parts :

2 pcs of heating stick



2 pcs of thermocouple



4 pcs of anti plug;





2 pcs of T shape silicone



1.6 meter of sliver



6 pcs of magnet



2 pcs of springs



One bottle of turbine oil



One tool box



One bag first aid kit;



ii. Technical parameters :

Model	LZB-700-R7
Weighing extent (kg)	0.35~2.5
Speed(bags/h)	660~800
Precession grade	X(0.5)
Power	4N-AC 380V 50Hz、 3.5KW
Air , air consumption	0.4~0.6MPa 7m ³ /h
Height (mm)	2400 (silo not included)

iii. Basic configure :

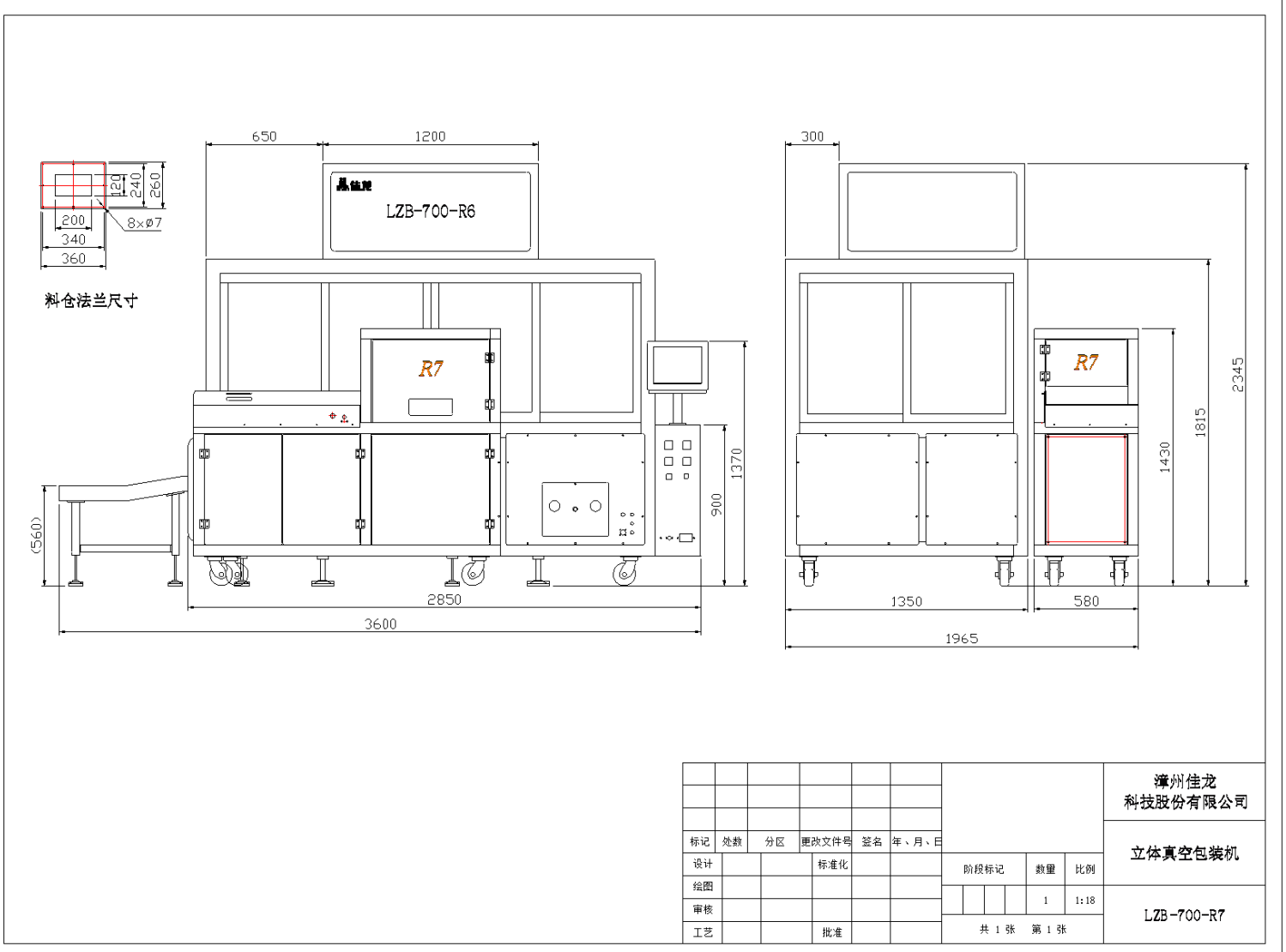
No.	Name	Supplier
1	Touch screen 10 "	Japan / Omron
2	Weighing controller	Canada/General
3	PLC	Japan / Omron
4	Switching Power Supply	Japan / Omron
5	Solid state relay	Japan / Omron
6	Intermediate relay	Japan / Omron
7	Load cell	USA、 Celtron
8	Phase sequence protection relay	France / Schneider
10	Vacuum pump	Germany/ (BECKER)
11	Cylinder	Japan /SMC
12	Solenoid valve	Japan /SMC
13	Linear Slides	Taiwan/ABBA
14	Miniature geared motors	Taiwan / ruiyong

iv. Functions and Features

- Fully automatic
- New generation of high-speed weighing control mode parameter automatic correction, adaptive weighing process various materials;
- Omron touch screen, Omron PLC centralized control, intelligent control weighing, filling, six-sided plastic,
- Vacuum, heat sealing, unloading bags, the whole process of transportation, real-time tracking system working state, friendly interface, easy to operate;
- Japan SMC pneumatic components, high reliability and long service life;
- Germany becker vacuum pumps, stable and reliable;
- Different packaging specifications to replace the mold is simple, fast, without any tools;
- Device with fault self-test function, maintenance is simple and convenient;

- Intelligent control information presentation system;
- Automatic Bag interface reserved.

V. Diagram of machine



Vi. Machine material:

Main frame : carbon steel



The parts which touches material is made of stainless steel 304.



vii. Packing Details:

Packing By Standard Export Wooden box

Total 4 box per set machine

Packing list:

Box No.1: 3.16*1.60*2.13m 1440kg
Box No.2: 1.80*1.23*1.24m 267kg
Box No.3: 1.84*1.22*1.23m 267kg
Box No.3: 1.05*0.73*1.14m 150kg
Total: 17.06 m³ 2124kg

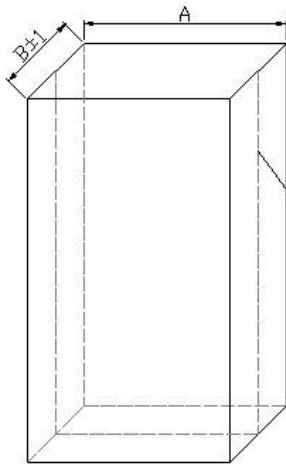
Picture reference:



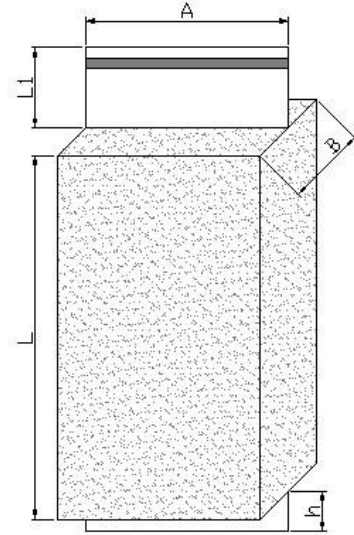
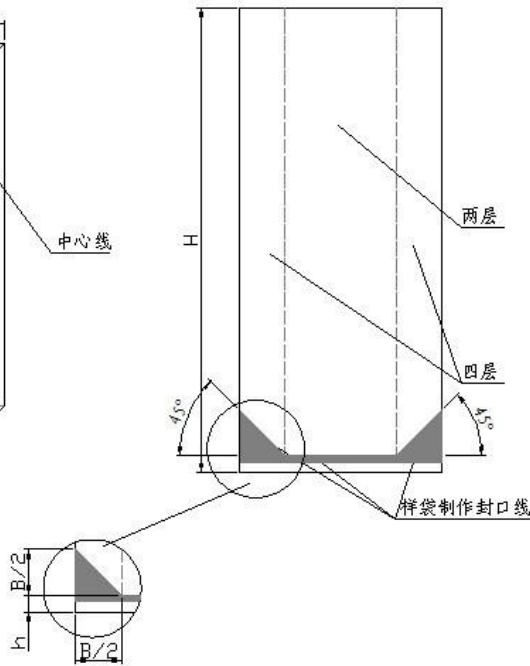


viii. Packing sample and bag details:

品名	规格	材质
2.5kg空白风琴袋	390×180+60	B0PA15/PE110
1.0kg空白风琴袋	320×100+60	B0PA15/PE95
0.5kg空白风琴袋	290×80+40	BPAl5/PE90



样袋展开图


技术要求

- 1、风琴袋厚度 $\delta=0.10\sim0.14\text{mm}$
- 2、气密性与热封性能良好
- 3、保证中心线位置，不允许错位

包装规格	A × B (mm)	H (mm)	h (mm)	δ (μm)	R3/R6/R7 成型高度L (mm)
2.5kg	180 × 60	390	不大于15	125	240
1.0kg	100 × 60	320	不大于15	110	175
0.5kg	80 × 40	290	不大于15	105	165

风琴包装袋制作参考尺寸明细表

 漳州佳龙科技股
 份有限公司

 风琴包装袋
 尺寸规格
