

RZCUT6-2516EF
瑞洲数控皮革切割机

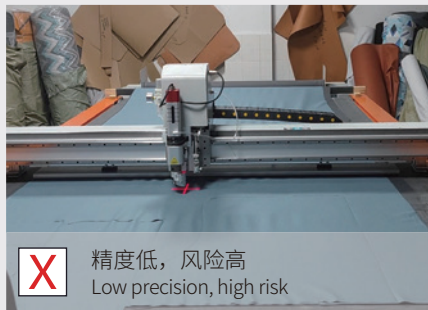
CNC LEATHER AUTO CUTTING MACHINE

优劣对比

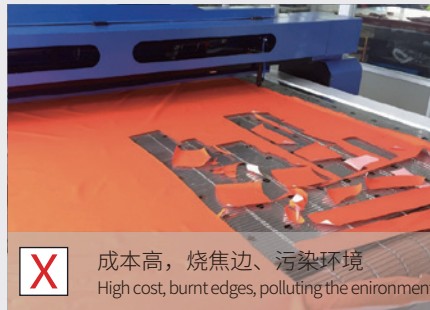
COMPARISON OF ADVANTAGES AND DISADVANTAGES



X 手工裁、效率低
Hand-cutting, low efficiency.



X 精度低，风险高
Low precision, high risk



X 成本高，烧焦边、污染环境
High cost, burnt edges, polluting the enironment

传统模式

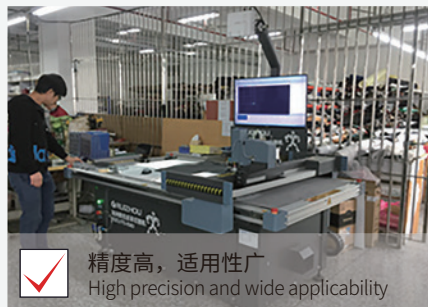
TRADITIONAL MODE

瑞洲智能数控切割机

RUIZHOU INTELLIGENT CNC CUTTING MACHINE



✓ 机器裁、效率高
CNC cutting in high efficiency.



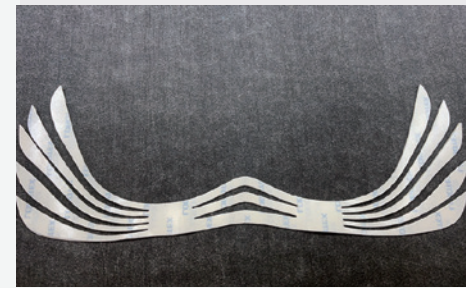
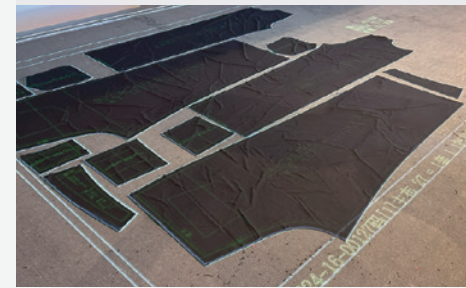
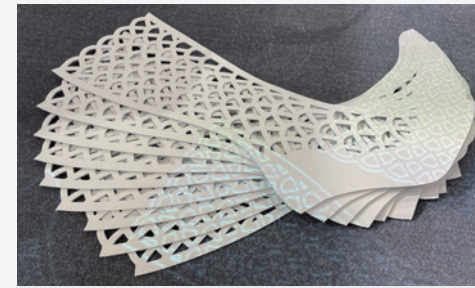
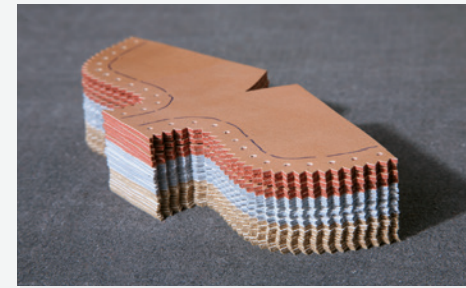
✓ 精度高，适用性广
High precision and wide applicability



✓ 成本低，省材料
Low cost, save material

切割效果

CUTTING EFFECT



产品参数

PRODUCT PARAMETERS

切割尺寸 Effective working area	2500mm*1600mm
机器尺寸 Machine dimension	3530mm*2210mm
机器重量 Machine weight	≈1250KG
切割厚度 Cutting thickness	0.1- 6 mm
主机工作电压/频率 Machine working voltage /Frequency	AC220V±22 / 50±1Hz
气泵工作电压/频率 Vacuum pump working voltage/Frequency	AC380V±38V / 50±1Hz
气泵功率 Vacuum pump power	9kW

刀头模块

TOOL HEAD MODULE



双联冲

冲孔工具，2个直径的冲孔，自动切换冲孔，快速、精准。适合真皮、PU、超纤、布料等材料的单层或多层冲孔。

DOUBLE PUNCH:

Punching tool, 2 diameter punching, automatic switching punching, fast and accurate. Suitable for single or multi-layer punching of leather, PU, microfiber, fabric and other materials.

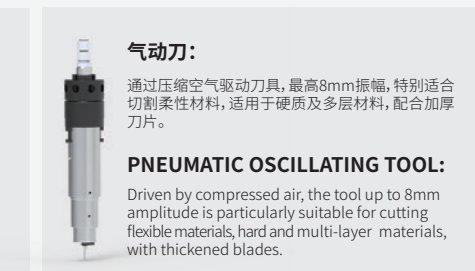


电动震动刀:

适合切割中等密度的材料。搭配种类繁多的刀片，适用于不同材料的加工，纸类、布类、皮类和各种柔性复合材料。

ELECTRIC OSCILLATING TOOL:

Suitable for cutting medium density materials. With a wide range of blades, it is suitable for processing paper, cloth, leather and various flexible composite materials.



气动刀:

通过压缩空气驱动刀具，最高8mm振幅，特别适合切割柔性材料，适用于硬质及多层材料，配合加厚刀片。

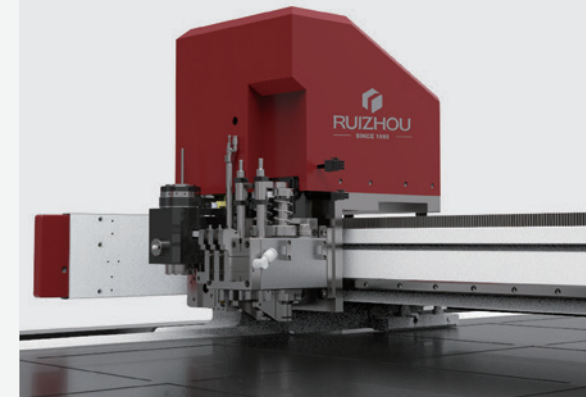
PNEUMATIC OSCILLATING TOOL:

Driven by compressed air, the tool up to 8mm amplitude is particularly suitable for cutting flexible materials, hard and multi-layer materials, with thickened blades.

产品特点

PRODUCT CHARACTERISTICS

多元化组合机头可满足各种行业多种柔性材料切割
Diversified combination cutting tool can be used to cut flexible materials in a variety of industries



广东瑞洲科技有限公司

GUANGDONG RUIZHOU TECHNOLOGY CO., LTD

售后热线: 400-8833-986

WWW.RUIZHOU.COM.CN

WWW.RUIZHOUTECH.COM

公司总部: 中国广东省佛山市南海区桂城街道聚元南路20号瑞洲科技大厦16楼

制造中心: 中国广东省佛山市南海区里水镇兴瑞路1号

HQ Add: 16th Floor, Ruizhou Technology Building, No. 20 Juyuan South Road, Guicheng Street,

Nanhai District, Foshan City, Guangdong Province, China

Manufacturing Center: No.1 Xingrui Road, Lishui Town, Nanhai District,

Foshan City, Guangdong Province, China.