

HIGOLD®

The Emperor sink who competes for the peak

The more you use, the newer it is,
superior to all other quartz sink

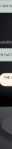
10 Years Warranty



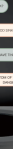
Born for classic inheritance

Satisfy any imagination of quartz sink.

HIGOLD®



Good-looking
The more you use,
the newer it is



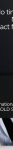
No fading
High temperature resistance
and anti-scratch



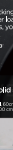
No air holes
High strength
and impact resistance



Food grade
FDA agency
approval



Fast draining
High
firmness

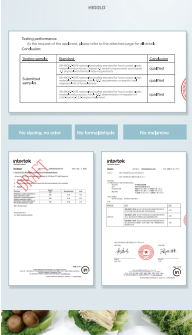


Easy cleaning
One wipe, oily stains
are all gone

The more you use, the newer it is, stable quality makes your kitchen enduringly beautiful

Returning to the beauty essence of quartz sink
Giving the beauty of the kitchen without fading.

HIGOLD®



Tiny air hole, big breakthrough

Questions are welcome
to identify the truth

HIGOLD®

← HOW TO IDENTIFY HIGH QUALITY QUARTZ SINK? →

Q: HOW IS THERE ANY AIR HOLE IN YOUR QUARTZ SINK?

A: NO, A GOOD SINK DOESN'T HAVE ANY TINY AIR HOLE

Q: BUT WHEN OTHER FACTORS SAY IT'S NORMAL TO HAVE TINY AIR HOLE?

A: THE AIR HOLE ONLY AT THE BOTTOM OF THE SINK WILL BECOME A HIDDEN DANGER TO THE CRACKING OF THE SINK

No tiny air hole
Big industrial
breakthrough

High strength
Stronger and
more durable



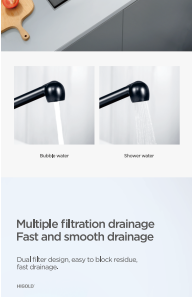
Defective products
If the manufacturer will
it's normal to have tiny air hole,
suggest you to give a full
consideration on it

High Hardness, Impact Resistance

HIGOLD production standard,
higher than international
standard

No tiny air holes, no cracking hidden danger.
No matter full water loaded or the
impact from pots and pans, you can rest assured.

HIGOLD®



Impact test of solid steel ball
International Standard 250g steel ball 60cm high impact, no damage
HIGOLD Standard 500g steel ball 1.5m high impact, no damage

HIGOLD Quartz Sink
Impact resistant,
from outside

Defective products
No impact resistance,
potential risk of damage

Food grade materials without odor

Agency approval by both
FDA & National Standard

The production of quartz sink
requires a certain amount of plastic to bond
quartz stone together.
Please refuse non-food grade materials,
which will bring great hidden danger to health.

HIGOLD®



Testing performance
On the request of the applicant, please refer to the attached page for details

Conclusion

Substantiated samples

Qualified

Qualified

Qualified

Qualified

Qualified

Qualified

Qualified

Qualified

Qualified

Qualified

Qualified

Qualified

Qualified

Qualified

Qualified

Qualified

Qualified

Qualified

Qualified

Qualified

Qualified

Qualified

Qualified

Qualified

Qualified

Qualified

Qualified

Qualified

Qualified

Qualified

Qualified

Qualified

Qualified

Qualified

Qualified

Qualified

Qualified

Qualified

Qualified

Qualified

Qualified

Qualified

Qualified

Qualified

Qualified

Qualified

Qualified

Qualified

Qualified

Qualified

Qualified

Qualified

Qualified

Qualified

Qualified

Qualified

Qualified

Qualified

Qualified

Qualified

Qualified

Qualified

Qualified

Qualified

Qualified

Qualified

Qualified

Qualified

Qualified

Qualified

Qualified

Qualified

Qualified

Qualified

Qualified

Qualified

Qualified

Qualified

Qualified

Qualified

Qualified

Qualified

Qualified

Qualified

Qualified

Qualified

Qualified

Qualified

Qualified

Qualified

Qualified

Qualified

Qualified

Qualified

Qualified

Qualified

Qualified

Qualified

Qualified

Qualified

Qualified

Qualified

Qualified

Qualified

Qualified

Qualified

Qualified

Qualified

Qualified

Qualified

Qualified

Qualified

Qualified

Qualified

Qualified

Qualified

Qualified

Qualified

Qualified

Qualified

Qualified

Qualified

Qualified

Qualified

Qualified

Qualified

Qualified

Qualified

Qualified

Qualified

Qualified

Qualified

Qualified

Qualified

Qualified

Qualified

Qualified

Qualified

Qualified

Qualified

Qualified

Qualified

Qualified

Qualified

Qualified

Qualified

Qualified

Qualified

Qualified

Qualified

Qualified

Qualified

Qualified

Qualified

Qualified

Qualified

Qualified

Qualified

Qualified

Qualified

Qualified

Qualified

Qualified

Qualified

Qualified

Qualified

Qualified

Qualified

Qualified

Qualified

Qualified

Qualified

Qualified

Qualified

Qualified

Qualified

Qualified

Qualified

Qualified

Qualified

Qualified

Qualified

Qualified

Qualified

Qualified

Qualified

Qualified

Qualified

Qualified

Qualified

Qualified

Qualified

Qualified

Qualified

Qualified

Qualified

Qualified

Qualified

Qualified

Qualified

Qualified

Qualified

Qualified

Qualified

Qualified

Qualified

Qualified

Qualified

Qualified

Qualified

Qualified

Qualified

Qualified

Qualified

Qualified

Qualified

Qualified

Qualified

Qualified

Qualified

Qualified

Qualified

Qualified

Qualified

Qualified

Qualified

Qualified

Qualified

Qualified

Qualified

Qualified

Qualified

Qualified

Qualified

Qualified

Qualified

Qualified

Qualified

Qualified

Qualified

Qualified

Qualified