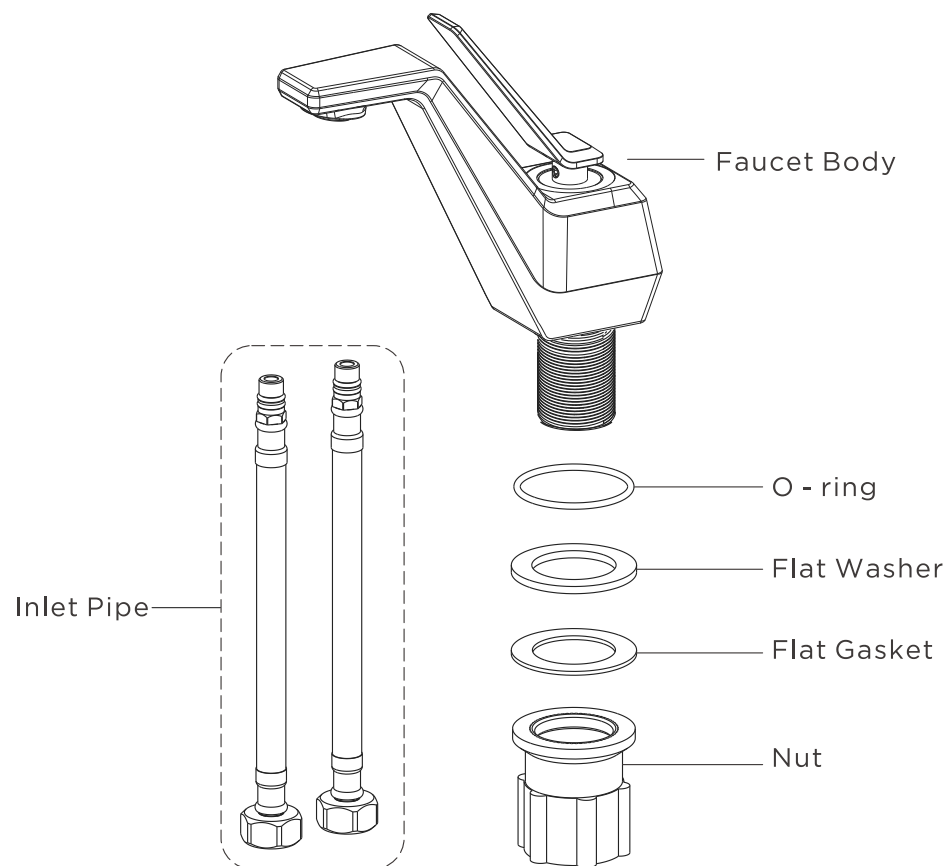
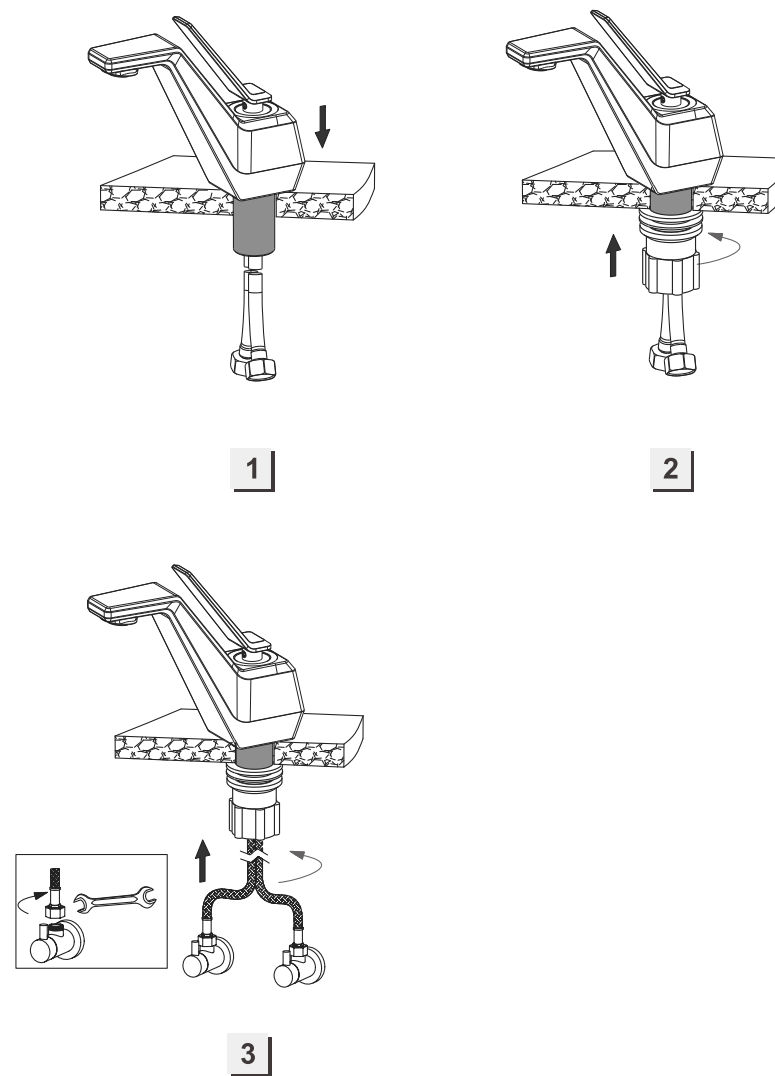


1. Product Configuration Reference Diagram



2. Installation Steps Reference Diagram



3. Installation Steps

1. Before installation, please confirm that the basin has a 33 - 35mm through - hole. Remove the fixing components at the bottom of the faucet body, then install the assembled faucet body into the basin hole. A base sealing ring must be placed at the bottom of the body.
2. Screw the fixing components from below the basin onto the faucet spigot in the reverse - removed order, and then use an installation tool to strengthen the fixation.
3. Connect the two inlet hoses of the faucet body to the hot and cold water angle valves respectively. The red inlet hose is for hot water, and the blue one is for cold water. If connected incorrectly, it will be opposite to the red - blue identification on the handle.
4. Turn the handle and test - run the water to check if there are any leaks at each connection. Thus, the installation is complete.

4. Usage Methods

1. Pull the handle upwards to open. The larger the angle, the greater the flow rate; conversely, the smaller the angle, the smaller the flow rate until it is closed.
2. When the handle is opened upwards, adjust to the left to increase the hot water supply; adjust to the right to increase the cold water supply.

5. Usage Conditions

1. Pull the handle upwards to open. The larger the angle, the greater the flow rate; conversely, the smaller the angle, the smaller the flow rate until it is closed.
2. When the handle is opened upwards, adjust to the left to increase the hot water supply; adjust to the right to increase the cold water supply.

6. Precautions

1. After opening the product packaging, please check the accessories against those listed in the Product Configuration Reference Diagram. If any parts are missing or damaged, please contact the local distributor immediately.
2. The installation dimensions of the purchased faucet should match those of the pre - embedded water inlet pipes.
3. The core part of the faucet body has been inspected and adjusted by the factory. Do not disassemble it yourself.
4. Before installing the faucet, please be sure to remove impurities and sludge in the pre - embedded water pipes to avoid blockage and affecting the water - outlet function.
5. After installation, please turn on the water source and then check whether all connections are tight to ensure there is no leakage.

7. Maintenance

1. After opening the product packaging, please check the accessories against those listed in the Product Configuration Reference Diagram. If any parts are missing or damaged, please contact the local distributor immediately.
2. The installation dimensions of the purchased faucet should match those of the pre - embedded water inlet pipes.
3. The core part of the faucet body has been inspected and adjusted by the factory. Do not disassemble it yourself.
4. Before installing the faucet, please be sure to remove impurities and sludge in the pre - embedded water pipes to avoid blockage and affecting the water - outlet function.
5. After installation, please turn on the water source and then check whether all connections are tight to ensure there is no leakage.