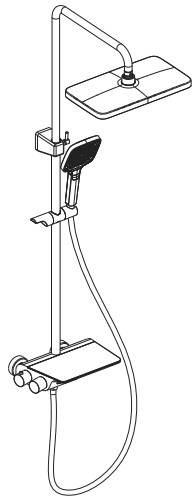


HIGOLD®



BS2 THREE FUNCTION THERMOSTATIC SHOWER SET

Instruction Manual

Please read this Instruction manual carefully before using the product and keep it properly

HIGOLD®

Product installation picture

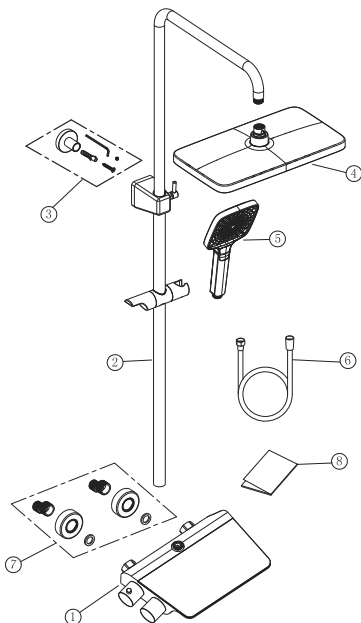
Warning: Before installation and use, be sure to read all the contents of this installation and use manual carefully!  
After opening the product package, please check the accessories carefully according to the above table and the picture above. If there is a shortage, please contact your local distributor or our company immediately.  
Tools required for installation: adjustable screwdriver, hex wrench, Phillips screwdriver, hammer drill, pants, protective pin, raw material belt, horizontal gauge.

List of standard parts

Number	Name	Quantity
1	Faucet main body	1
2	Shower tube set	1
3	Fixed seat kit	1
4	Top spray shower	1
5	Hand shower head	1
6	Shower hose	1
7	Foot flex kit	1
8	Specification	1

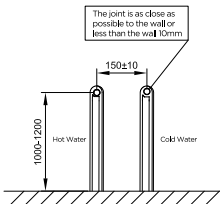
Installation aid

 Hammer	 Spirit level	 Adjustable wrench
 Screwdriver	 Percussion drill	 Hex wrench

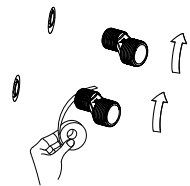


HIGOLD®

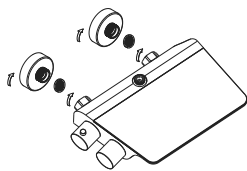
Installation procedure



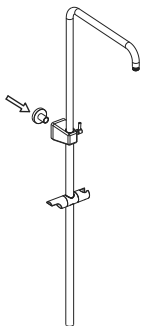
1.Before installation, ensure that the two water outlets are on the same horizontal line, and ensure that the deviation of the distance between the two water outlets is within the allowable range, and connect the cold and hot water sources by the method of left and right.



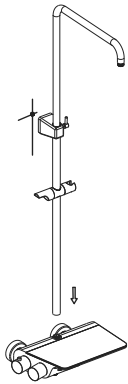
2.Wrap the curved foot with the raw material belt and connect it to the buried outlet pipe connector.



3.Screw into the decorative cup, and then rotate the hexagon nut on the main body to fix the main body on the water inlet connector.



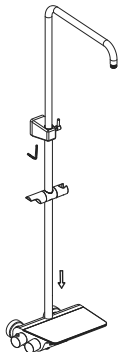
4.Put a fixing seat on the shower tube assembly.



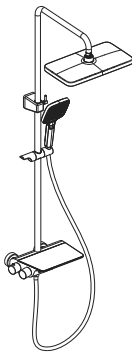
5.Put a rubber pad on the nut of the shower tube assembly, and then rotate the nut to fix it on the main body, and then mark the position of the fixed seat.



6.After removing the shower tube assembly, fix the fixing seat on the wall in the marked position.



7.Rotate the shower tube assembly to the main body, and then use a hex wrench to fix the telescopic tube to the fixing base.



8.Complete the installation of shower hose, hand shower, and top spray shower.

Installation precautions

- 1. This product is delivered to consumers after strict quality testing, please do not disassemble!
  - 2. Before installing the faucet, please be sure to rinse the waterway thoroughly first, so as not to block the waterway impurities and affect the production of the faucet product normal use.
  - 3. Please install according to the product installation dimensions to ensure correct installation; Do not force the installation to avoid damage bad faucets and spare parts.
  - 4. The connection between the faucet and the hot and cold water supply pipe must be correct. Facing the faucet, the left side is connected with hot water, and the right side is connected with cold water.
  - 5. After the faucet is installed, open the water source to check whether the connection is leaking.
  - 6. Faucet applicable temperature range: hot water supply temperature 55-85°C, cold water supply temperature 4-29°C.
- It is recommended that the hot water inflow temperature be 55°C-65°C.  
Faucet water pressure range :0.05-0.75Mpa, 0.1-0.5Mpa recommended.

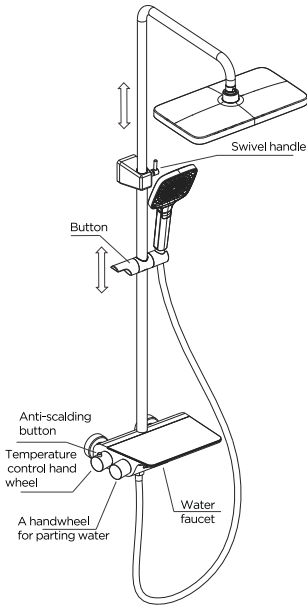
Product Care and maintenance To keep the faucet bright and clean, please follow the following care methods:

- 1.Under normal circumstances, only rinse with water and wipe clean with a soft cotton cloth.
- 2.If the water can not be washed off, use a mild detergent to clean, clean, please flush with water wash the faucet and wipe dry with a soft cotton cloth.
- 3.Do not use any abrasive cleaning equipment to clean the faucet, such as metal brush, cleaning cloth, etc.
- 4.Do not use any acidic, alkaline and abrasive cleaning agent to clean the faucet, such as detergent powder.
- 5.During unoccupied periods, please close the water inlet main valve in your home to avoid changes in pipeline pressure on the product into damage.
- 6.When the temperature, especially near the faucet, is below 0 ° C, the main water valve should be turned off and the water pipe and water pipe should be emptied faucet internal water, so as not to cause internal water icing and crack faucet and water pipe.

If you encounter any questions during installation or use, please contact your local distributor

Instructions for use

- 1.the use of water distribution handwheel: the initial state of the water distribution handwheel is closed; Counterclockwise rotation of the handwheel corresponding to the outlet sequence: off → top spray shower → hand shower → outlet nozzle.
- 2.The use of temperature control handwheel: turn the left temperature control handwheel to adjust the water temperature, clockwise rotation for low temperature, counterclockwise rotation for high temperature.
- 3.The use of wine seat: press the button to adjust the rise and fall of wine seat.
- 4.Use of rotating handle: Turn counterclockwise to loosen the rotating handle and adjust the height of the head shower.
- 5.The use of precautions: turn the hand wheel to adjust the temperature can not be used too hard, the torque should not exceed 4NM, so as not to damage the faucet. In use, when the faucet discharge water flow is significantly reduced, please clean the shower head filter and shower water colloid holes, so as not to affect the shower water or blockage and burst.



Schematic diagram of the handwheel

