

1. Nail - free Installation Instructions

Note: Please check whether the wall surface is suitable for installation before installation!

Suitable wall materials: concrete, ceramic tile, glass, natural stone, metal, wood, plastic; Unsuitable wall materials: paint, gypsum, wallpaper.

- ① Wipe the wall surface clean and mark the installation position;
- ② Apply nail - free glue to the back of the hanging piece, with a thickness greater than 1mm.
- ③ Stick the auxiliary sticker on the edge of the product, then evenly press the bathroom accessory with the glue, and seamlessly fit it to the installation wall surface.
- ④ After standing for 48 hours, it can be used normally. In case of low temperature, the time needs to be extended to 72 hours. After the glue solidifies, it will be more firmly used.

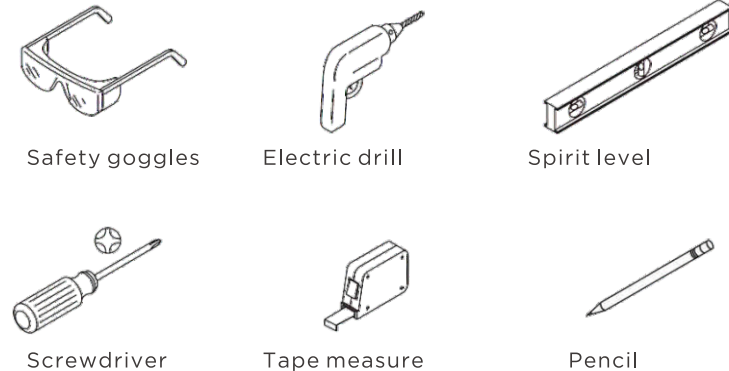
2. Drilling Installation Instructions

Warning: When drilling any holes in the wall, please ensure that there are no hidden pipes and cables where you are going to drill!

- ① Place the product on the wall surface and mark the position for installing the screw.
- ② Use an impact drill to make holes at the marked positions.
- ③ Insert the rubber plug into the installation hole on the wall.
- ④ As shown in the figure, align the bathroom accessory with the hole position, fix it on the wall with a screw, and then it can be used normally.

3. Installation Tools

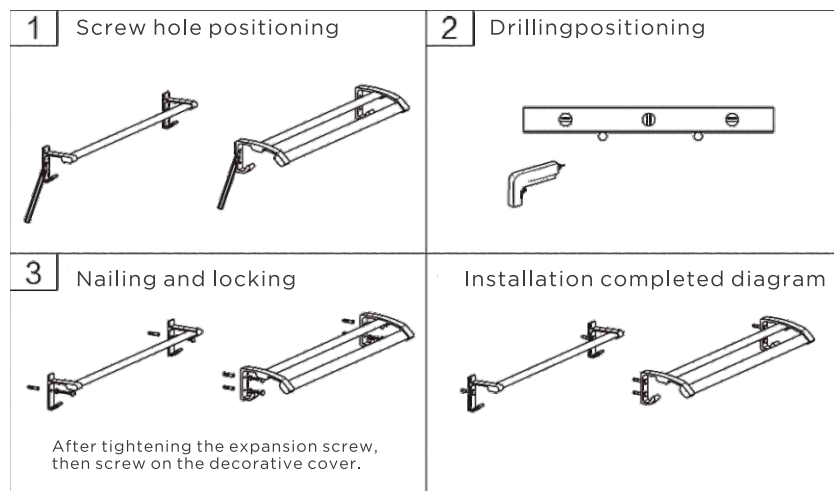
When installing, it is recommended to prepare the following tools:



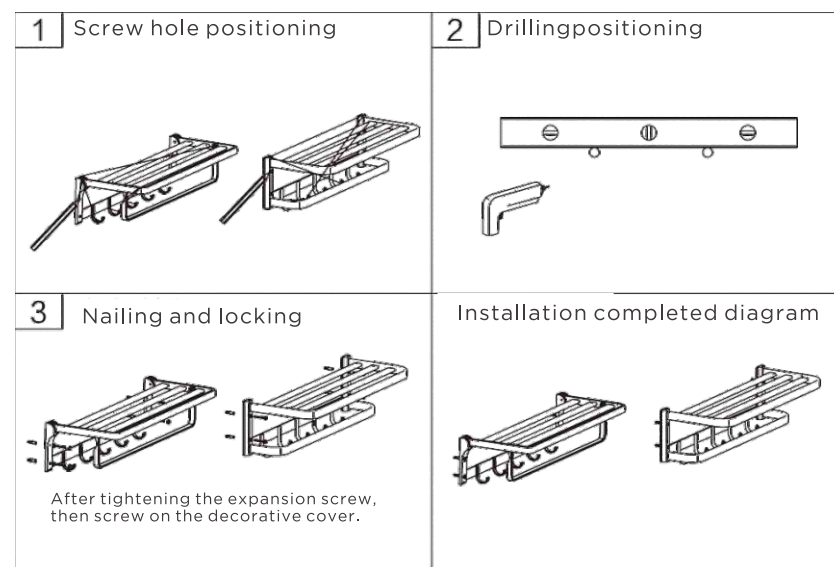
4. Tissue Box Installation

- | | |
|--|---|
| 1 Screw hole positioning
 | 2 Drilling
 |
| 3 Nailing and locking
<p>After tightening the expansion screw, then screw on the decorative cover.</p> | Installation completed diagram
 |

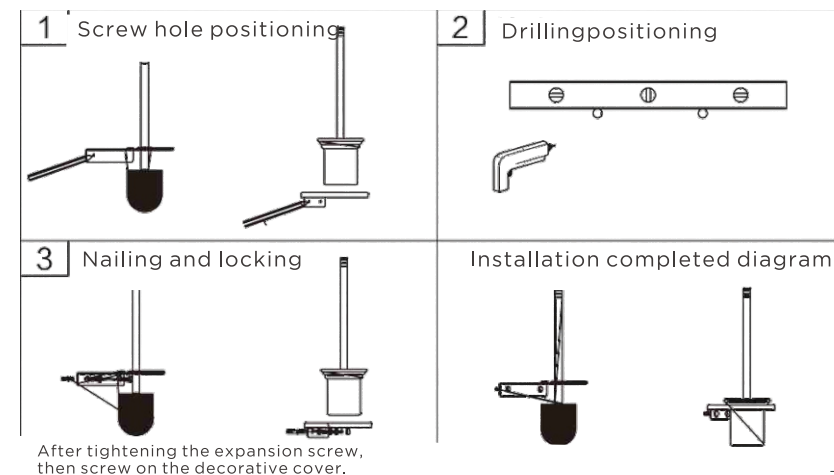
5. Single/Double Rod Towel Rack Installation



6. Bath Towel Rack Installation



7. Toilet Brush Installation



十、角篮安装

