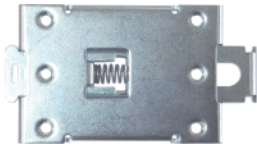
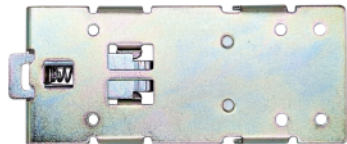


Product Description

- ◆ Material: Steel
- ◆ Surface treatment: Colored zinc plated
- ◆ Suitable for heatsink KHS-B70 and KHS-B90
- ◆ Suitable for Standard 35mm DIN Rail

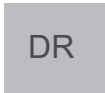


DR-1



DR-3

Ordering Information



DR Series

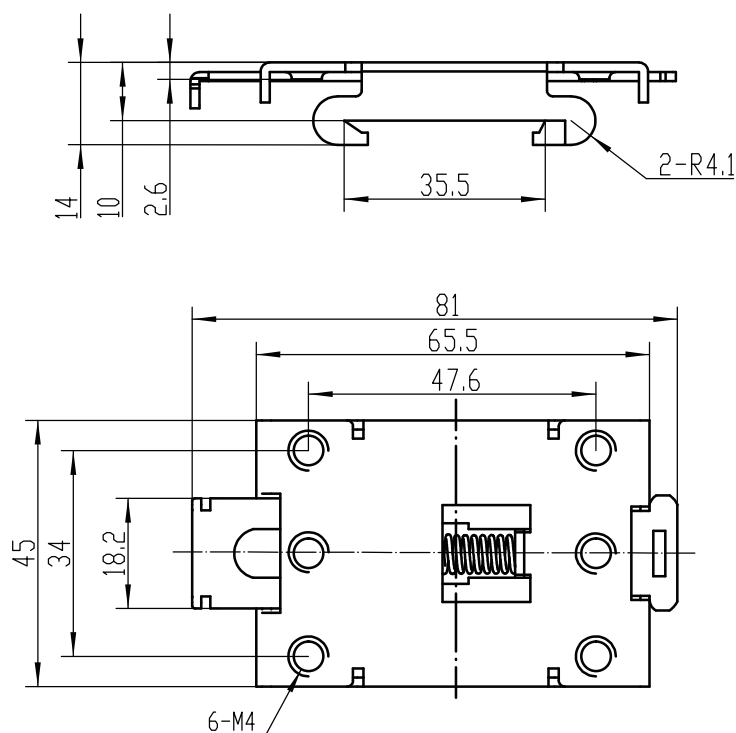


- 1: suitable for heatsink KHS-B70
- 3: suitable for heatsink KHS-B90

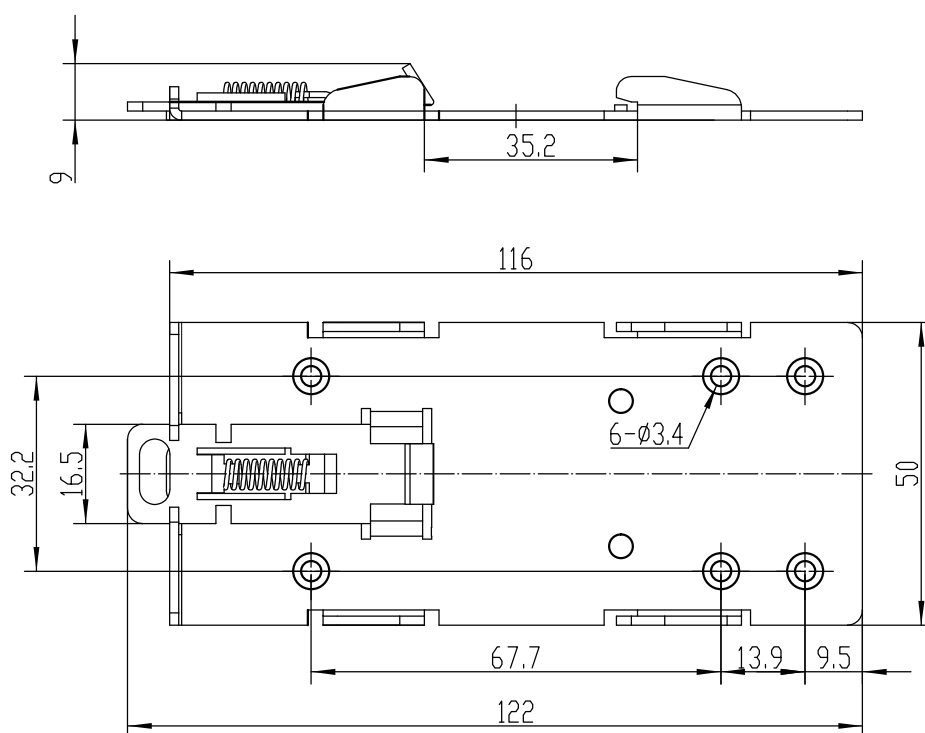
General Specifications

Series	DR Series	
Part Number	DR-1	DR-3
Photo		
Material	Steel	Steel
Net Weight(Typical)	58g	76g
Outer Dimension	81mm×45mm×14mm	122mm×50mm×9mm
Suitable Heat Sink	KHS-B70	KHS-B90

Outline Dimensions



DR-1



DR-3