

Product Description

- ◆ MOSFET Output
- ◆ Low Impedance
- ◆ Control Voltage: 12VDC or 24VDC
- ◆ Panel Mounted
- ◆ LED Indicator
- ◆ RoHS Compliant



Ordering Information

KSJD	30	D	10	-24
KSJD Series	Load Voltage 30:30VDC	DC Control	Load Current 10:10Amp	Control Voltage 12:12VDC 24:24VDC

General Specifications

Input Specifications (Ta=25°C)		
Control Voltage Range	12VDC	12VDC
	24VDC	24VDC
Must Turn-on Voltage	12VDC	9.6VDC
	24VDC	19.2VDC
Must Turn-off Voltage		2VDC
Maximum Input Current		15mA
Maximum Reverse Voltage	12VDC	-12VDC
	24VDC	-24VDC

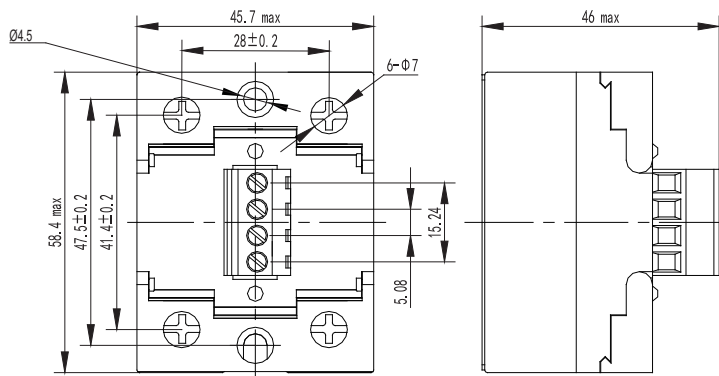
Output Specifications (Ta=25°C)		
Load Voltage Range		8 ~28.8VDC
Maximum Transient Voltage		30VDC
Load Current Range		0.002 - 10A
Maximum Surge Current[@10ms]		30A
Maximum Turn-on Time		500µs
Maximum Turn-off Time		500µs
Maximum Off-State Leakage Current@Rated Load Voltage (mA)		0.1mA
Maximum On Resistance		14mΩ max. (@TA=25°C)

General Specifications (Ta=25°C)		
Dielectric Strength[50/60Hz]	Input & Output / Base	2000Vrms
Operating Temperature Range		-30°C ~ +80°C
Storage Temperature Range		-30°C ~ +100°C
Weight[Typical]		150g

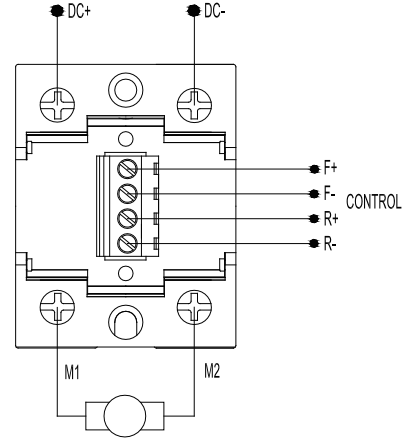
Application

DC motor control

Outline Dimensions/Wiring Diagram

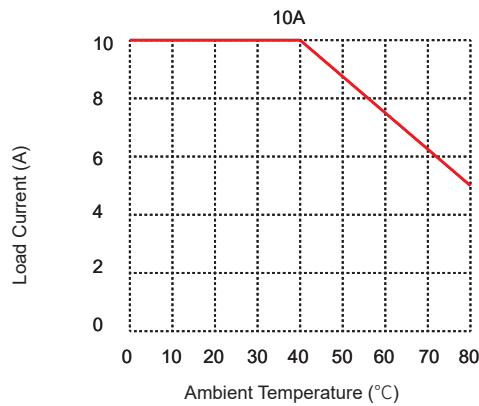


Outline Dimensions



Wiring Diagram

Temperature Curve



General Notes

1. Relay must be mounted to proper sized heat sink based on thermal curves. Thermal grease or a thermal pad must be used between relay.
2. When connecting wiring to SSR please ensure screws are torqued down properly. Recommended torque for input screw is 4.43/0.5 in-lb/N·m, output screw is (18-20)/(2.0-2.2) in-lb/N·m.
3. When the operation temperature is above 25 °C, please consider the derating as per the Thermal Derating Curve.
4. Please ensure reliable grounding when using the SSR.
5. Control polarity must be observed. Otherwise, it may cause damage to the relay.

Warnings

1. The product's side panels may be hot, allow the product to cool before touching.
2. Disconnect all power before installing or working with this equipment.
3. Verify all connections and replace all covers before turning on power.