



**FEITING PIPE ENGINEERING CO., LTD**  
**( International Projects & Trade )**

Add: 11F, Opark, No. 18 Zhihui Road, Huishan District,  
Wuxi Jiangsu, P.R. China  
Tel: +86 510 8359 0332  
Fax: +86 510 8359 4500  
Http: //www. feitingpipe.com

**FEITING HI-TECH PIPING ZHEJIANG CO.,LTD**

Add: Feiyun New Zone, Ruian Economic Development  
Zone, Zhejiang, P.R. China  
Tel: +86-577-58818591  
Fax: +86-577-58818590

**SHANGHAI FEITING PIPE MANUFACTURE CO.,LTD**

Add: NO.85 Shande Road Jinshan District  
Shanghai China  
Tel: +86-21-57247801  
Fax: +86-21-57247766

**SUNWEN PIPING SOLUTIONS CO.,LTD**

**( Piping Stock company )**

Add: No. 18 Jinhua Rd Xishan District, Wuxi city, China

# FEITING PIPE

## BROCHURE

# ENTERPRISE BRIEF

Feiting Pipe Manufacturing Co., Ltd is established in 1996, with production plants located in Shanghai and Zhejiang separately. Provide fittings and piping products including Stainless, Duplex, Nickel alloy, P Series Alloy, Carbon Steel, optimized designing pressure piping and prefabricated pipe spools

**The Group Members Includes:**

**Shanghai Feiting Pipe Manufacturing Co., Ltd**

Production activities:

Prefabrication, pipe spools, clad fittings

Seamless Fittings: O.D 1/2"- 36" (Carbon/Alloy/Stainless)

Welded fittings: O.D 16" – 134" (Carbon/Alloy/Stainless)

**Feiting Hi-tech Piping Zhejiang Co., Ltd**

Production activities:

Seamless fittings: O.D1/2" - 32"

(Stainless/Duplex/Nickel Alloy/Supper alloy)

Welded Fittings: 6"-32"

(Stainless/Duplex /Nickel Alloy/Supper alloy)

Flanges, Forged fittings.

**Feiting Pipe Engineering Co., Ltd**

International Projects, Engineering & Enlistments.

**Our Advantage:**

**1. Service range:** Full range of fittings and piping manufacturer with Dimension up to 134" (3.4Meters) together

with Professional design, R&D in high class fitting products and Pre-fabricated pipe spools.

**2. Quality control system:** We maintain years of traceability, advanced equipment to manufacture stainless steel, corrosion resistant alloy, low and high temperature alloy pipe flanges and factory prefabrication. Passed international certification of ISO9001 / ISO14001, OHSAS18001, M650, API, ABS, DNV, PED97/23/CE etc.

**3. Our Strength:** We are approved by CH2M-HILL, Petroleum Development Oman LLC (PDO).Kuwait Oil Company (KOC) FLUOR, L&T, PAPCO, PARCO, and Petro Brazil and well recognized by Global EPC, various project records in Chemical Fertilizer, Petrochemical, Power station, offshore oil Platform and Ship building industry.

FEITING PIPE ENGINEERING CO., LTD is an international division of Feiting group which focuses on clients globally especially for pipe fittings and prefabrication pipe spool projects and enlistments. The team is fully fledged with a group of well qualified and experienced professionals with in depth knowledge of engineering standards and supply chain management.

Living by quality and existing by trustworthiness, the company adheres to the management policy "Quality first, credit supreme, striving perfectly and management strictly", assures the first-class service and supreme products.

## FEITING GROUP

Shanghai Feiting Pipe Manufacturing Co.,Ltd

Feiting Hi-tech Piping Zhejiang Co.,Ltd

Feiting Pipe Engineering Co.,Ltd

Prefabrication&Manufacture of fittings in material of Carbon/Alloy/Stainless steel  
Seamless Fittings:O.D 1/2"-36"  
Welded Fittings:O.D 16"-134"

Manufacture of fittings flanges in material of Stainless/Duplex/ NickelAlloy/Supper alloy  
Flanges,Forged fittings.  
Seamless Fittings:O.D 1/2"-32"  
Welded Fittings:6"-32"

International projects, engineering, trade  
Pipe stock & distribution  
EPC, financing



SHANGHAI FEITING PIPE MANUFACTURE CO.,LTD.



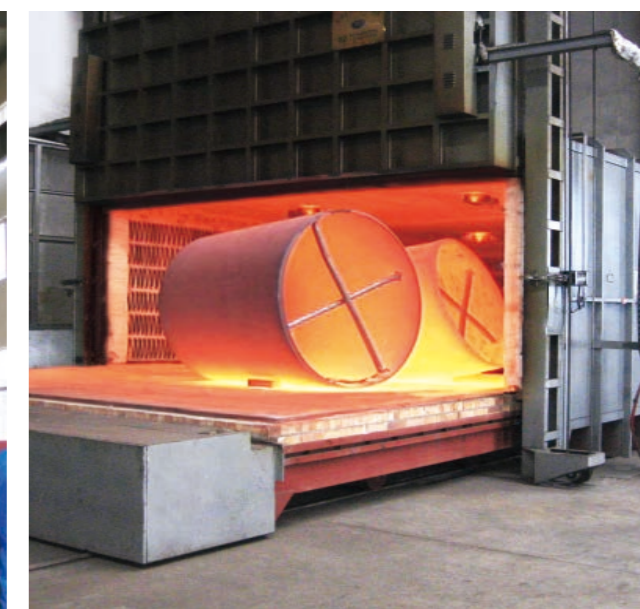
FEITING HI-TECH PIPING ZHEJIANG CO.,LTD

## Manufacturing process



## Producing equipment for fittings &amp; flanges

- Forming Equipment of Large Diameter Welded Fittings ,
- Four column hydraulic press of 4000T ( attached a efficiency desk3.5×5m ) 1set
- Tee cold extruder forming machines of 1200T×3,500T×3,315T×3 6sets
- Tee hot extruder seamless forming machine for 800 tons(medium frequency)5sets
- Elbow and elbow bend heating pushing machines for -----
- 300tons(mediumfrequency) 6sets
- Stainless steel special-purpose elbow cold shaping machines 5sets
- Four column hydraulic press of 800T,500T,300T for reducer, cap, stubend 5sets
- Elbow double-end beveling machines 10sets
- Tee double-end chamfering machines 4sets
- Hot forging grinding pressure machines of 400tons and 160tons 2sets
- Hot forging air hammers(flange) of 1000kg, 500kg 6sets
- Shot blasting machines(trunk,hookup carbon steel special-purpose,hookup -stainless steel special-purpose)6sets
- Heating treatment boiler(auto data) 5sets
- Heating treatment furnace for large diameter welded fittings 1set
- Various machining set-ups (numerical-controlled lathe, lathe, drill press and so on)47sets
- Rolling machine(width3000mm×thickness40mm,25mm)2sets
- Weld machines(includes automatic)25sets



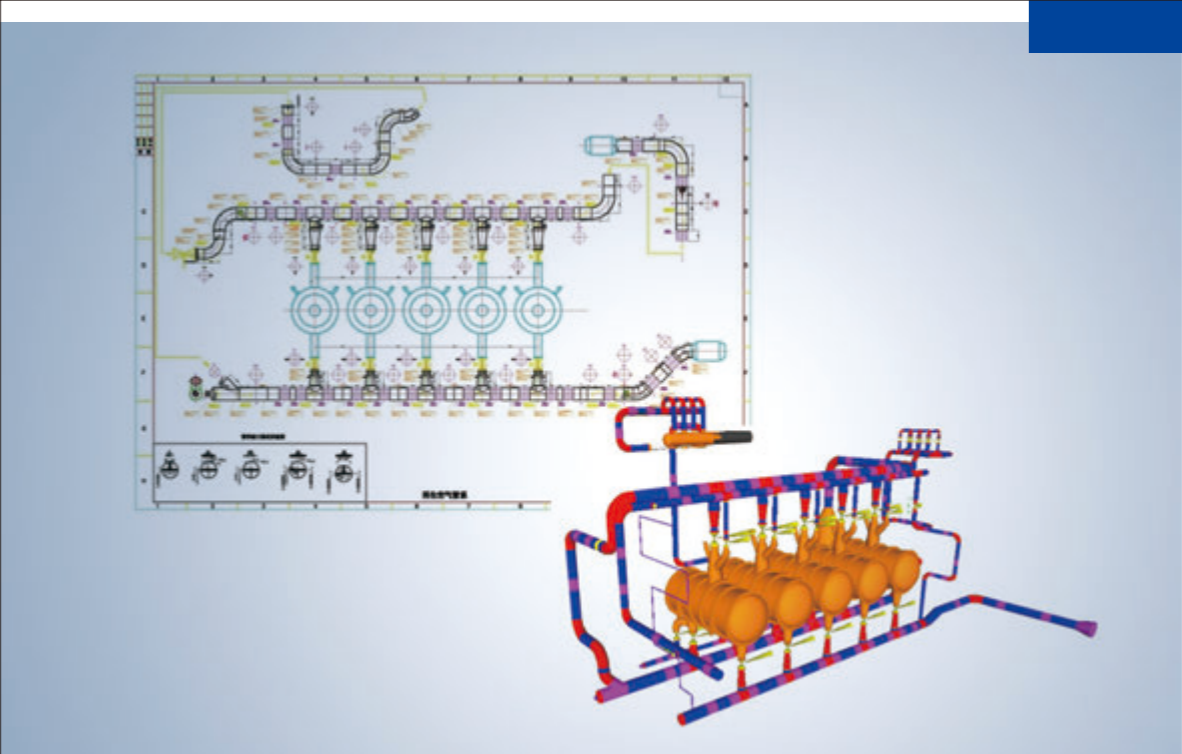


# Pipe-prefabrication

For the high technological requirements of pipeline system , optimized design & skid-mounted by us, organizing the materials such as steel pipes, pipe fittings, flanges, welding materials, fasteners, seals, etc., according to drawings .

**MATERIALS :**  
**Nickel Alloy :** UNS N08020, N04400, N06600, N06625, N08800, N08810, N08825, N10276, N10665, N10675  
**Super Stainless Steel :** 904L (N08904) , 317L, 316Lmod, 254SMO(UNS S31254)  
**Stainless Steel :** 304, 304L, 304/304L, 304H, 316, 316L, 316/316L, 321, 321H, 347, 347H  
**Duplex Steel :** UNS S31803, S32205, S32750 (2507) , S32760  
**Alloy Steel :** P11, P12, P22, P5, P9, P91

**DIMENSION :**  
**Seamless :** 1/2"--24"  
**Welded :** 18"--48"  
**Wall thickness :** SCH10S--SCH160



# Pipe-prefabrication instruction

- Modularization & skid-mounted Piping Superiority Design
- Modularization & skid-mounted pipe-prefabrication for big sizes
- Modularization & skid-mounted pipe-prefabrication
- service such as pipes, fit tins, flanges, welding metal, fastener and seals etc.





## BUTT WELDING STEEL FITTINGS

**STANDARD :**  
ASME/ANSI B16.9, JIS B2311/2220, DIN2605/2616/2615, EN10253, MSS SP-43/SP-95

**TYPE :**  
**Elbow :** 45°, 90°, 180° (1D, 1.5D, 2.5D)  
**Tee :** CON & ECC  
Cap & Stub End  
**Special Fittings :** According to the drawing Picture

**MATERIALS :**  
**Nickel Alloy :** ASTM/ASME S/B366 UNS N08020, N04400, N06600, N06625, N08800, N08810, N08825, N10276, N10665, N1067  
**Super Stainless Steel :** 904L (N08904), A403 WP317L, 316Lmod, 254SMO (UNS S31254)  
**Stainless steel :** ASTM/ASME S/A403 WP304, WP304L, WP304/304L, WP304H, WP316, WP316L, WP316/316L, WP321, WP321H, WP347, WP347H  
**Duplex Steel :** ASTM/ASME S/A815-S31803, S32205, S32750 (2507), S32760  
**Alloy Steel :** ASTM/ASME S/A234/ A 234M WP5, WP9, WP11, WP12, WP22, WP91...  
**Carbon Steel :** ASTM/ASME S/A234/ A 234M WPB, WPC  
ASTM/ASME S/A420/ A 420M WPL6, WPL3 ASTM/ASMES/A860/A860M, WPHY42, WPHY52, WPHY56, WPHY60, WPHY65, WPHY70

**DIMENSION :**  
**Seamless :** 1/2"--24"  
**Welded :** 18"--136"  
**Wall Thickness :** SCH10S--SCH160



## High-pressure Special fittings :

### MATERIALS :

**Nickel Alloy :** ASTM/ASME S/ B366 UNS N08020, N04400, N06600, N06625, N08800, N08810, N08825, N10276, N10665, N10675

**Super Stainless Steel :** ASTM/ASME S/B366 904L (N08904), A403 WP317L, 316Lmod, 254SMO (UNS S31254)

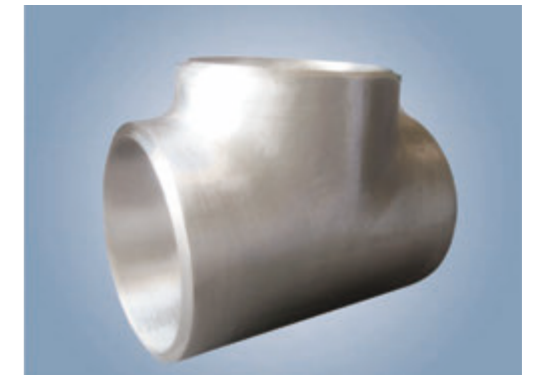
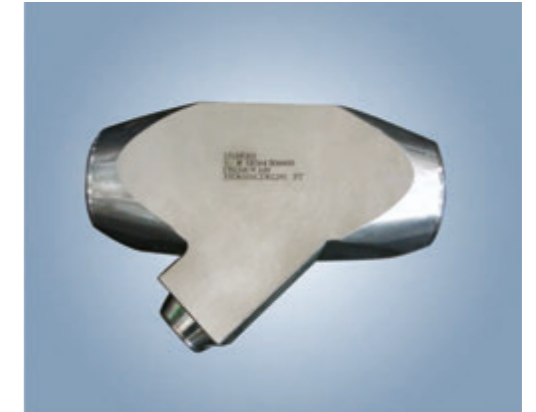
**Stainless steel :** ASTM/ASME S/A403 WP304, WP304L, WP304/304L, WP304H, WP316, WP316L, WP316/316L, WP321, WP321H, WP347, WP347H

**Duplex Steel :** ASTM/ASME S/A815-S31803, S32205, S32750 (2507), S32760

**Alloy Steel :** ASTM/ASME S/A234/ A 234M WP5, WP9, WP11, WP12, WP22, WP91...

**Carbon Steel :** ASTM/ASME S/A234/ A 234M WPB, WPC  
ASTM/ASME S/A420/ A 420M WPL6, WPL3  
ASTM/ASME S/A860/A860M, WPHY42, WPHY52, WPHY56, WPHY60, WPHY65, WPHY70

**DIMENSION :**  
**Seamless :** 1/2"--24"  
**Welded :** 18"--136"



## Forged Fittings

### TYPE :

Thread& Socket  
Elbow(45°,90°).Cap,Tee( Equal& Reducing ),  
Reducer(Con&Ecc),Coupling,Union,Nipple,Olet  
(Weldolet ,Nipplet,Latrolet and elbolet)

### STANDARD :

ASME/ANSI 16.11,JIS,B2316,DIN

### RESSURE CLASS & DIMENSION:

3000#,6000#

From DN15 to Dn100

### MATERIALS :

**Nickel Alloy** : ASTM/ASME S/B564 UNS  
N08020, N04400, N06600, N06625, N08800,  
N08810, N08825, N10276,N10665, N10675

**Stainless Steel** : ASTM/ASME S/A182 F304、  
F304L, F304H,F316,F316L,F321,F321H,F347H

**Super Stainless Steel** : ASTM/ASME S/A182  
F44,F904L,F317L

**Duplex Steel** : ASTM A182 F51,F53,F55.

**Alloy Steel** :ASTM/ASME S/ A182 F11,F12,F22,  
F5,F9,F91

**Carbon Steel** :ASTM/ASME S/A105

ASTM/ASME S/A350 LF2

ASTM/ASME S/A694/A694M, F42, F52, F56,  
F60, F65, F70. . . .

ASTM/ASME S/A350 LF2

ASTM/ASME S/A694/A694M, F42, F52, F56,  
F60, F65, F70. . . .



## Flanges

### TYPE :

WN Flange,So Flange,LJ Flange,LWN Flange, SW Flange,Orifice  
Flange,Reducing Flange,figure 8 blind(blank&Spacer)

### STANDARD :

ASME/ANSI B16.5/16.36/16.47A/16.47B,MSS S44, ISO70051, JISB2220,  
BS1560-3.1, API7S-15, API7S-43, API605, EN1092

### MATERIALS :

**Nickel Alloy** : ASTM/ASME S/B564 UNS N08020, N04400, N06600, N06625,  
N08800, N08810, N08825, N10276,N10665, N10675

**Stainless Steel** : ASTM/ASME S/A182

F304, F304L, F304H, F316, F316L, F321,F321H,F347H

**Super Stainless Steel** : ASTM/ASME S / A182 F44, F904L, F317L

**Duplex Steel** : ASTM/ASME S/A182 F51, F53, F55.

**Alloy Steel** :ASTM/ASME S/A182 F11,F12,F22, F5,F9,F91

**Carbon Steel** :ASTM/ASME S/A105

ASTM/ASME S/A350 LF2

ASTM/ASME S/A694/A694M, F42, F52, F56, F60, F65, F70. . . .

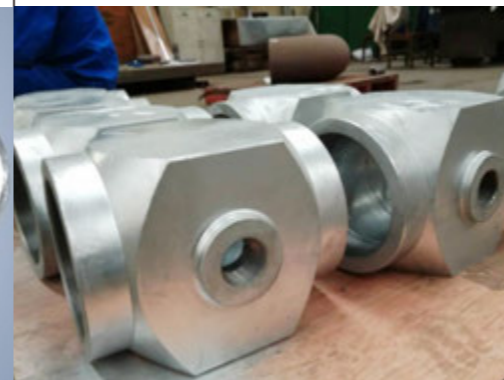
### PRESSURE CLASS & DIMENSION

(150#, 300#, 600#) : DN15-DN1500

900# :DN15-DN1000

1500#:DN15-DN600

2500#:DN15-DN300





## Bend/Clad fittings

### TYPE :

Bend from 20° to 90° (3D--10D)

**Dimension :** 8"--48"

**Wall thickness :** 6mm--40mm

### MATERIALS :

**Nickel Alloy :** N08020, N04400, N06600, N06625, N08800, N08810, N08825, N10276, N10665, N10675

**Super Stainless Steel :** 904L (N08904), A312TP317L, 316mod, 254SMO (UNS S31254)

**Stainless Steel :** A403 TP304, TP304L, TP304/304L, TP304H, TP316, TP316L, TP316/316L, TP321, TP321H, TP347, TP347H

**Duplex Steel :** A815 S31803, S32205, S32750 (2507), S32760

**Alloy Steel :** A 234 WP5, WP9, WP11, WP12, WP22, WP91... and more



## Pipe

Based on our large scale of steel pipe stock for production material & Trading, we provide our customer with one package piping solutions including following grade and materials:

**Alloy steel:** A335 - P91, P9, P5, P22, P11, 13Cr, 28Cr.

**Carbon steel:** API 5L/A106 B, X42, X52-X70. A333 Gr.6, API 5CT K55 N80, P110, API 2B.

**Stainless steel:** A312/ A358, TP316, TP304, Tp347. Other Material requires special production including Duplex steel S31803/S32205, N04400, N08800, with size range 1/2"-36", W.T 0.5-100mm.

In types of Seamless, LSAW, and EFW. Range: 1/2"-110" with Wall Thickness 100mm available.



Material Composition Analysis(PMI)



X-ray Flaw Detection tester(RT)

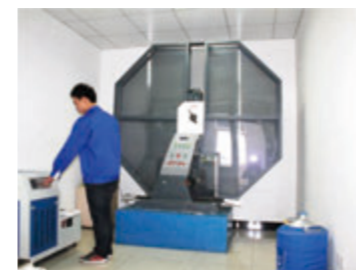


Thickness Tester

## TESTING & INSPECTING EQUIPMENT FACILITY

### The Main Testing Equipment

- Spectrometer Quantron Advanced Analytical Systems
- Machine Performance Test
- Impact Testing for Low Temperature & Normal Temperature
- Metallurgical Microscope
- Analytic Instrument of C&S
- Ultrasonic Thickness Gauge
- Hardness Tester
- X-ray Flaw Detection
- Ultrasonic Flaw Detector
- UT
- PT
- Ferrite Instrument



Impact Testing For Low Temperature&amp;normal Temperature



Machine Performance Test



Metallurgical Microscope (1000x)



Hardness Tester



penetrant Detection Testing(PT)



Ferrite Testing



Ultrasonic Flaw Detection Testing(UT)



Intercrystalline Corrosion Apparatus

## Global Market



## Certificates :

- 1.ISO9001 international quality system certification
- 2.CE (PED 97/23 / CE) certification
- 3.Special equipment (pressure pipe components) manufacturing license certification
- 4.ISO14001-2004
- 5.OHSA18001-2007
- 6.API
- 7.Kuwait Oil Company(KOC)
- 8.PDO
- 9.FLOUR
- 10.ABS
- 11.NORSOK M-650
- 12.PETROBRAS



## Zhejiang Certificates :



## Shanghai Certificates :



## Main Customers



Service Area



Petrochemical Industry

Gas Oil

Marine

Food&medicine

Electricity

Chemical Fertilizer Industry

Oil Field In Ocean

Environmental Engineering

MAIN REFERENCES

PETROCHEMICAL

| CUSTOMER/PROJECT  | MATERIAL  |
|---|---|
| KAZAKHSTAN, AROMATIC PROJECT REFINERY CO., LTD.<br>Aromatic hydrocarbon project | STAINLESS STEEL,NICKEL<br>ALLOY FITTINGS              |
| PAKISTAN ANGLO CADIPPE STATION PEOJECT  | STAINLESS STEEL FITTINGS                              |
| CNPC ethylene project   | STAINLESS STEEL,NICKEL<br>ALLOY FITTINGS              |
| SINOPEC ethylene project  | STAINLESS STEEL,NICKEL<br>ALLOY FITTINGS              |
| CNOOC ethylene project  | STAINLESS STEEL FITTINGS                              |
| SEDIN ENGINEERING CO.,LTD   | STAINLESS STEEL,DUPLEX<br>STEEL,NICKEL ALLOY FITTINGS |

OIL & GAS

| CUSTOMER/PROJECT  | MATERIAL  |
|---|---|
| PETROLEUM DEVELOPMENT OMAN LLC  | CARBON STEEL FITTINGS,  |
| IRAQ MAJNOON EXPORT PIPELINE PROJECT  | STAINLESS STEEL,NICKEL<br>ALLOY FITTINGS,                         |
| IRAQ EPC OIL EXPORT PIPELINE BADRA - GHARRAF (PHASE I) AT<br>BADRA OILFIELD ( PROCESS PIPE FITTINGS ) | STAINLESS STEEL,SPECIAL<br>ALLOY FITTINGS                         |
| DALEEL PETROLEUM L.L.C.OMAN   | CARBON STEEL FITTINGS   |
| SINOPEC REFINING OIL PROJECT  | STAINLESS STEEL,NICKEL<br>ALLOY FITTINGS                          |
| CNOOC REFINING OIL PROJECT  | STAINLESS STEEL FITTINGS  |
| PAK ARAB REFINERY LTD (PARCO)PARCO REVAMP   | CARBON & SS BW FITTINGS,<br>FORGED FITTINGS & FLANGES             |
| KOC GC 3,4,7,&21 IN SK AREA   | DUPLEX, SS & CARBON BW FITTINGS,<br>BARRED TEES & FORGED FITTINGS |
| KOC CONSTRUCTION FOR FLOWLINES AND ASSOCIATED<br>WORKS AT BURGAN AND MAGWA AREAS                      | CARBON BW FITTINGS & FORGED<br>FITTINGS                           |
| FLUOR AMURSKY GAS PROCESSING PLANT PROJECT NON LICENSED UNITS   | CARBON STEEL BW FITTINGS  |
| ENGRO CORPORATION PAKISTAN ENGRO DSQ PIPELINE PROJECT   | 347H BW FITTINGS, FLANGES & BENDS                                 |
| PAK-ARAB PIPELINE COMPANY LIMITED WHITE OIL<br>PIPELINE MOGAS PROJECT                                 | BENDS, ANCHOR FLANGE,<br>BW FITTINGS                              |

CHEMICAL & FERTILIZER

| CUSTOMER/PROJECT                       | MATERIAL  |
|--|---|
| SHENHUA GROUP                          | STAINLESS STEEL,DUPLEX STEEL,<br>NICKEL ALLOY FITTINGS                                    |
| LORDEGAN UREA FERTILIZER PROJECT       | ALLOY,CARBON,STAINLESS AND<br>FORGED FITTINGS   |
| HAIWEI GROUP                           | MODULARIZATION IN SKID-MOUNTED<br>PACKAGE OF STAINLESS PIPES                              |
| SINOCHEM GROUP                         | DUPLEX STEEL FITTINGS & FLANGES   |
| BASF                                   | STAINLESS STEEL FITTINGS  |
| Bayer                                  | STAINLESS STEEL FITTINGS,<br>MODULARIZATION IN SKID-MOUNTED<br>PACKAGE OF STAINLESS PIPES |
| BP                                     | STAINLESS STEEL,NICKEL<br>ALLOY FITTINGS  |
| CHINA TIANCHEN ENGINEERING CORPORATION | STAINLESS STEEL FITTINGS  |
| MAISON WORLEY PARSONS                  | STAINLESS STEEL,<br>ALLOY FITTINGS  |

ELECTRIC POWER

| CUSTOMER/PROJECT                         | MATERIAL                                       |
|--|--|
| CPECC                                    | SPECIAL ALLOY FITTINGS                         |
| CHINA POWER ENGINEERING CONSULTING GROUP | SPECIAL ALLOY FITTINGS                         |
| WAAD AL-SHAMAL PROJECT-SAUDI ELECTRIC    | CARBON,STAINLESS, FORGED<br>FITTINGS & FLANGES |

SEAWATER DESALINATION & OCEAN PLATFORM

| CUSTOMER/PROJECT                  | MATERIAL   |
|-----------------------------------|--|
| SEAWATER DESALINATION IN INDIA    | STAINLESS STEEL,DUPLEX STEEL<br>FITTINGS & FLANGES |
| SEAWATER DESALINATION IN HONGKONG | DUPLEX STEEL FITTINGS                              |
| PETROBRAS P75,P77                 | STAINLESS STEEL,DUPLEX STEEL<br>FITTINGS & FLANGES |
| PTT RA6                           | FLANGE, ELBOW, TEE,<br>REDUCER, OLETS              |