



GUANGDONG GANI(GROUP) CERAMICS CO.,LTD

Address: 2nd-5th Floor, T10, Smart City, No.28, Jihua 1st Road,Chancheng District, Foshan, Guangdong, China

Tel: 400 105 3288

Fax: 0757-8236 3900

Email: gani@gani.com.cn

<http://www.gani.com.cn/>

2021

GANI ACCESSORY BROCHURE

简一®大理石瓷砖
GANI MARBLE TILES



01

INTRODUCTION OF ACCESSORY CENTER



DESIGN

Ensure new material output twice a year and show in local showrooms to display space effect, benefit consumers and help store design services.



PROMOTION

Using the independently developed materials, we will launch the wall and floor full case paving design, and output the processing products in a complete set to ensure that the service of the supporting center is connected with the store immediately.



TECHNOLOGY

Make use of the super-high flatness and accurate size of GANI marble tile to produce mosaic and medallion with joint controlled within 0.5mm



INSTALLATION

Based on the high quality of tiles and processed products, output tools and accessories standard and finished products, provide paving drawings and techniques, and solve any technical problems that may occur in the construction process in time.



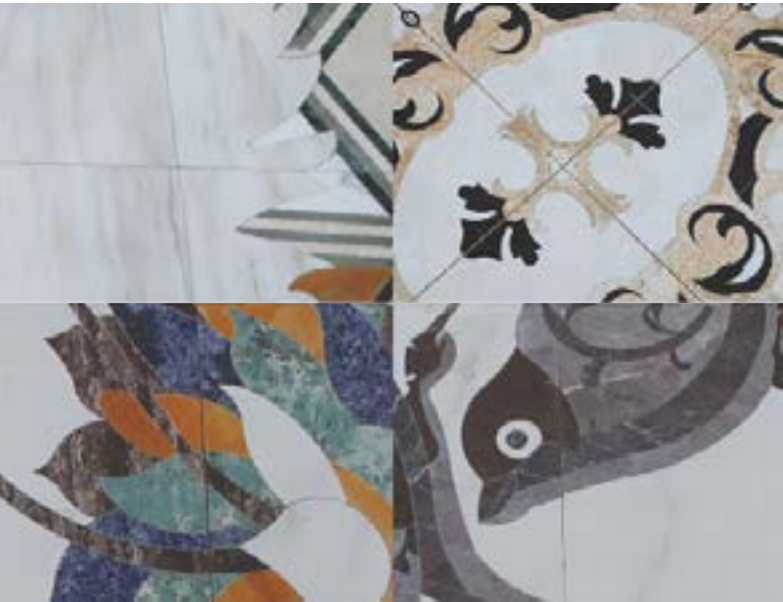
VENUE&EQUIPMENT

The supporting center has a land area of 53333 sqm, of which 20 thousand sqm invested in two years. It has 20 sets of over pressure five axis water cutters, multiple intelligent automatic cutting lines, multiple cutting lines and pure manual cutting lines, creating basic conditions for production.

02

SEAMLESS JOINT WATER-JET MEDALLION

The normal joint of medallion is 1.5-2mm. This processing seam will bond the surface with glue. But glue will be aging over time and cracks will become black or even deteriorated and fall off. Dirt will be stuck in the seam as well. It will not only affects the aesthetic effect, but also causes serious problems in medallion cleaning and durability.



NORMAL PAVING EFFECT

Considering the user experience of GANI exclusive seamless joint paving technology which has been launched globally in 2018, the accessory center accurately applied this technology and service and launched the seamless joint medallion products. Through the ultra-high pressure five-axis water jet equipment and the industry's top producing technology, the splicing gap is controlled within 0.5mm. GANI seamless joint medallion is exquisite and beautiful while can be tightly combined, durable and easy to clean.



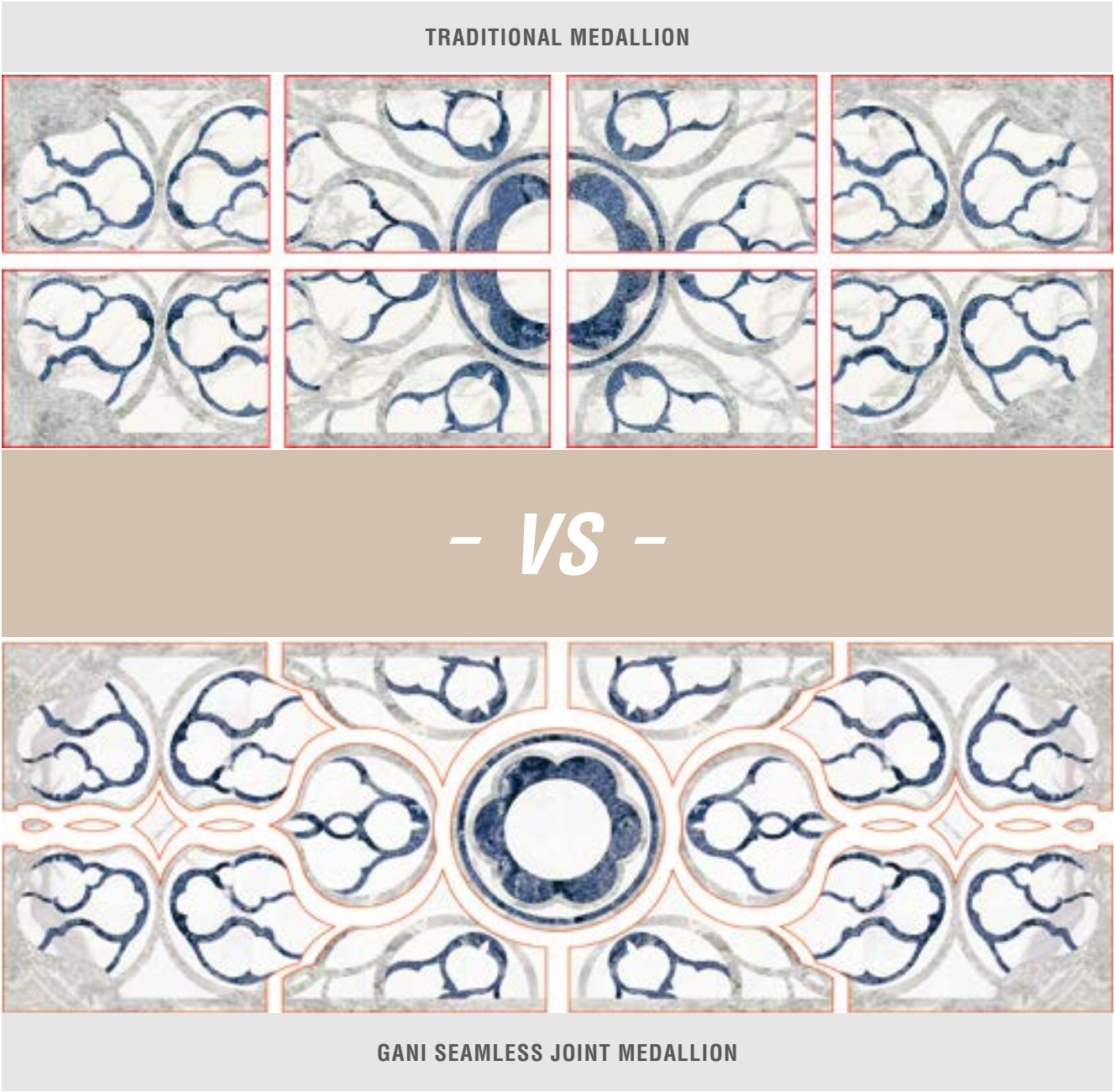
SEAMLESS JOINT PAVING EFFECT

03

SEAMLESS JOINT WATER-JET JET MEDALLION

The normal water-jet medallion products are divided by tiles specification. And thus, the water-jet design will be distributed on different tiles, no matter it is simple or complicated when paved according to the tile specification by workers on site. A complete pattern will be broken by the partition lines of tiles, which lack of aesthetics feeling and coordination.

The advantages of GANI seamless joint medallion: The design retains the integrity of the pattern and hides the cut-off line in the unobvious position. And the product gap will be controlled to be unobvious, nor is it limited by the size of tile. The aesthetic feeling can be restored and presented more perfectly.





SIMPLE EUROPEAN STYLE

FONTAINBLEAU

Elements: Acanthus - auspicious, peaceful and noble atmosphere;

The dome curve of European architecture evolved from the vines of Acanthus plants into simple and delicate staggered patterns, with leaves as ornaments, a small number of colorful flower buds interspersed, with distinct rhythm, the surrounding edge combined with the simplified shape of European dome, making the picture add a sense of hierarchy, meaning positive, sunshine and full of vitality.

The color is mainly gray and white, and the details are decorated with elegant gold and noble blue.

The combination of hardness and softness adds a sense of fashion to the delicate design.



① WJP2002-3
SIZE: 3600×2400mm



② WJP2002-6
SIZE: 3600×2400mm



③ WJP2002-4
SIZE: 1200×3600mm

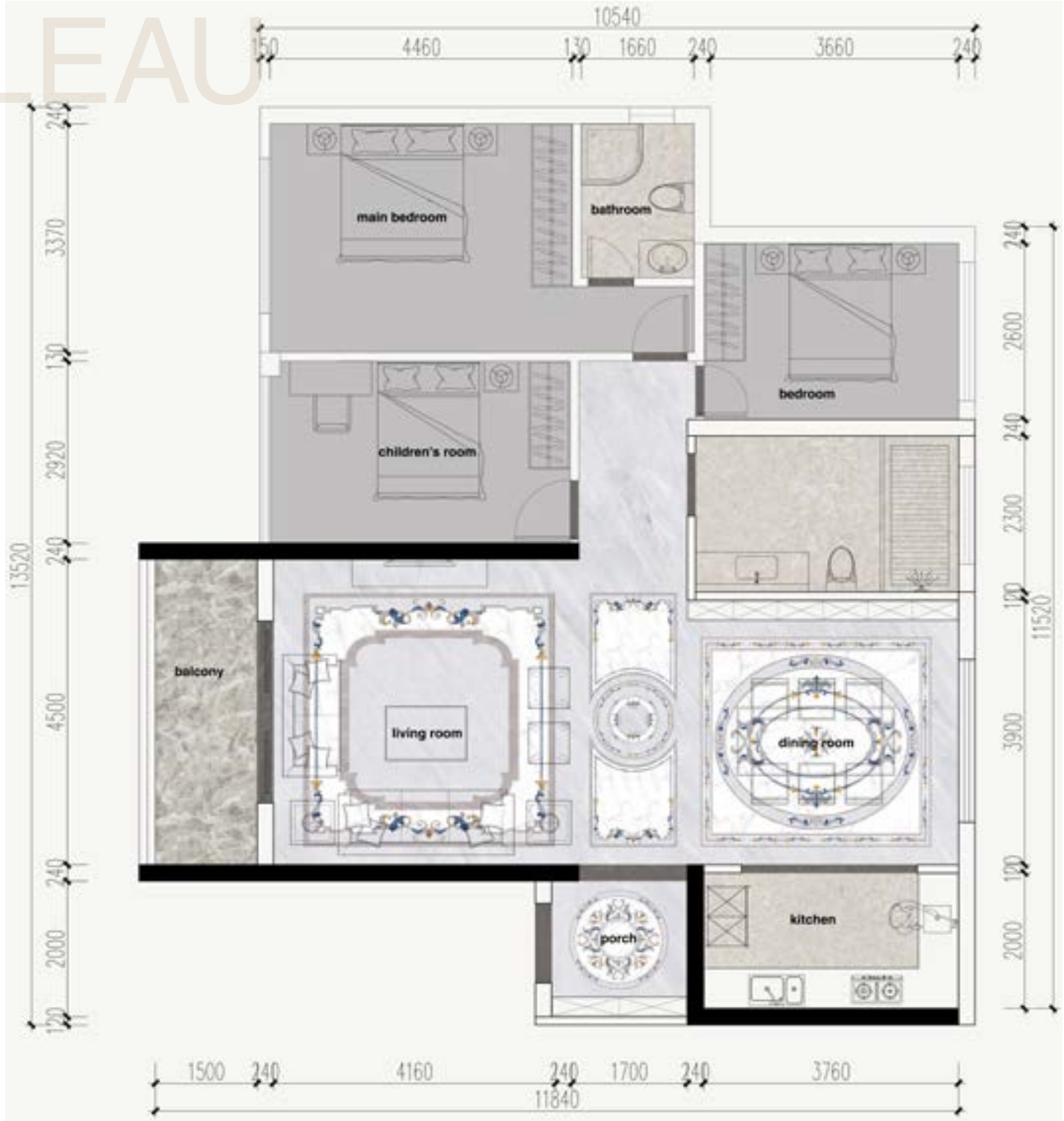


④ WJP2002-2
SIZE: 1800×1800mm



⑤ WJP2002-1
SIZE: 1200×1200mm

FONTAINBLEAU





SIMPLE EUROPEAN STYLE

LIVING ROOM

① WJP2002-3
SIZE: 3600×2400mm



SIMPLE EUROPEAN STYLE

DINING ROOM

② WJP2002-6
SIZE: 3600×2400mm





SIMPLE EUROPEAN STYLE

HALLWAY

③ WJP2002-4
SIZE: 1200×3600mm



SIMPLE EUROPEAN STYLE

FOYER

④ WJP2002-2
SIZE: 1800×1800mm



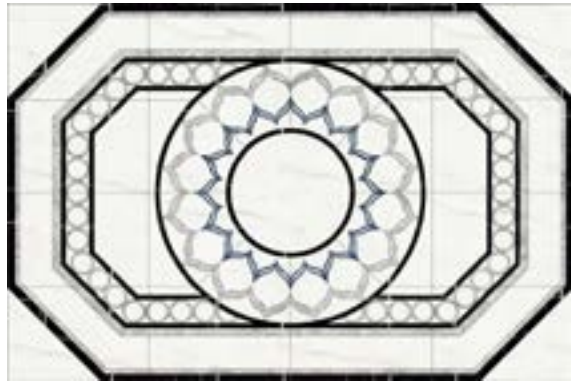
EUROPEAN
STYLE

SUMMER FLOWERS

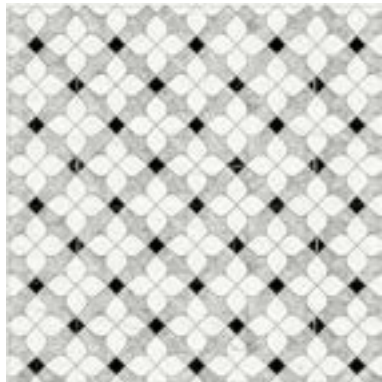
Element: Purple Dahlia - courage, perseverance, romance.

Inspired by Dahlia, the silhouette is transformed into a full and dignified circular pattern, combined with smooth lines and geometric figures, highlighting the visual changes brought by the pattern. The wall pattern is simplified, reorganized and arranged repeatedly to show the romantic temperament of European style. It has a symbol of generosity and richness.

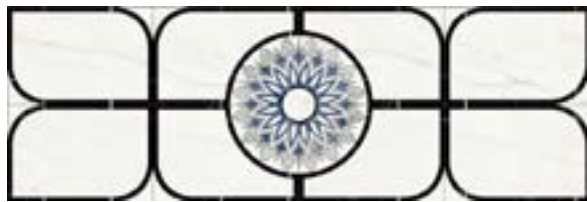
The colors are white and transparent (Statuario Calacatta), introverted grey (Fior di Pesco Carnico), mysterious and noble black (Laurent Black), and elegant GANI blue (Azul Bahia) ornament.



① WJP2003-1
SIZE: 3600×2400mm



② WJP2003-2
SIZE: 2400×2400mm



③ WJP2003-3
SIZE: 3600×1200mm

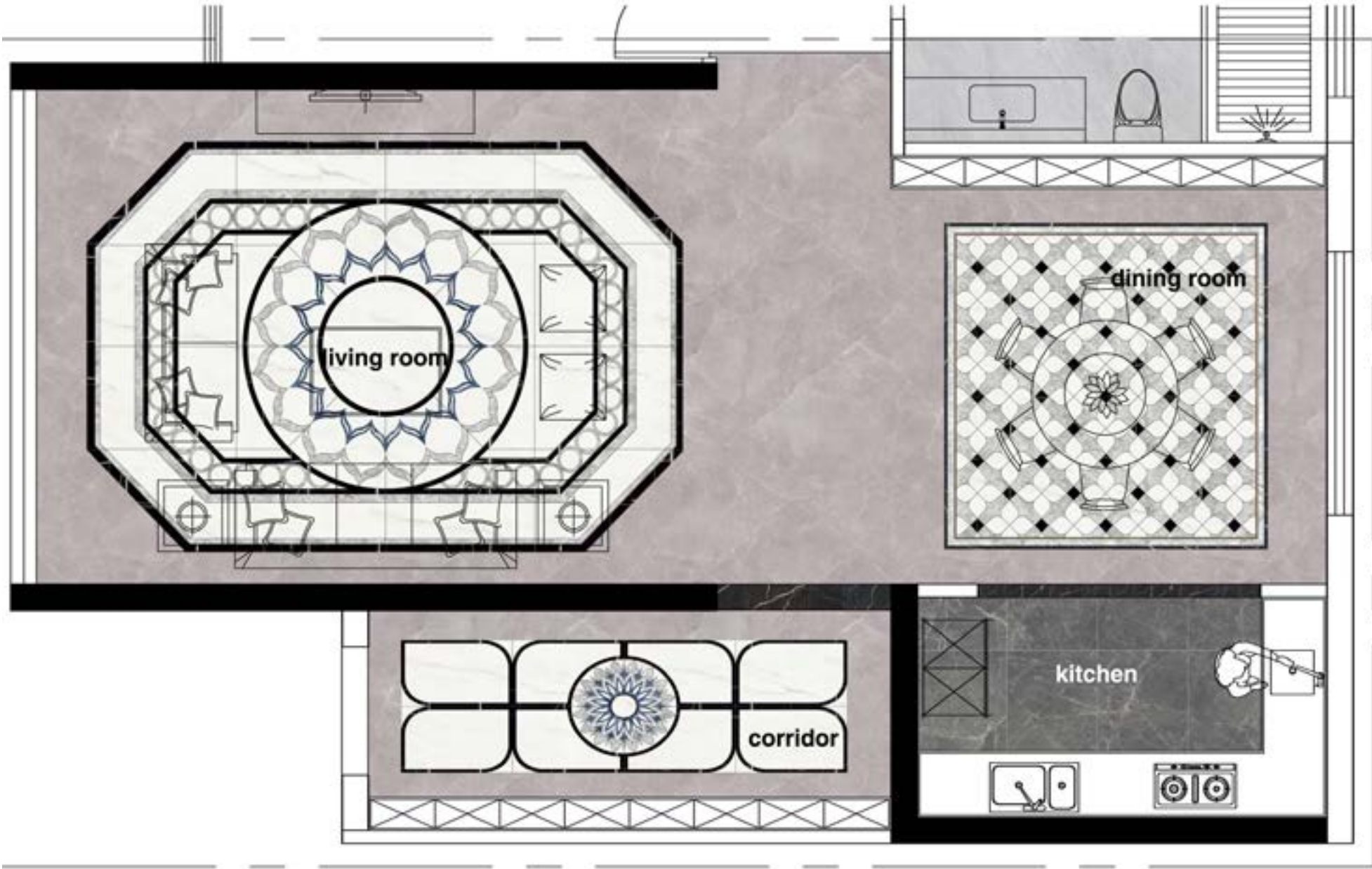


④ WJP2003-4
SIZE: 1800×1800mm



⑤ WJP2003-7
Customizable Sizes

SUMMER FLOWERS

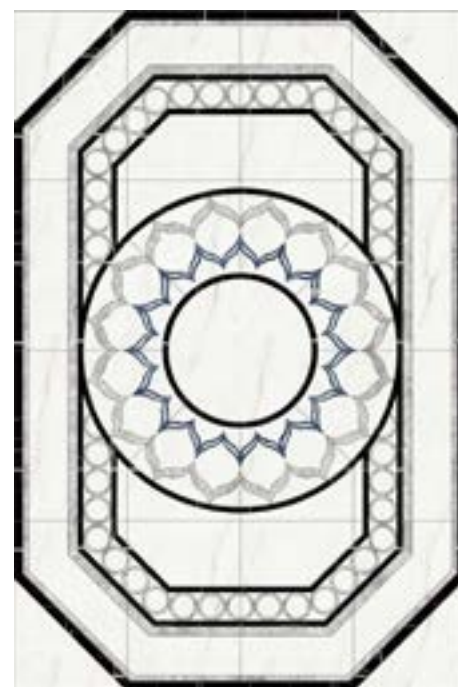




EUROPEAN STYLE

LIVING ROOM

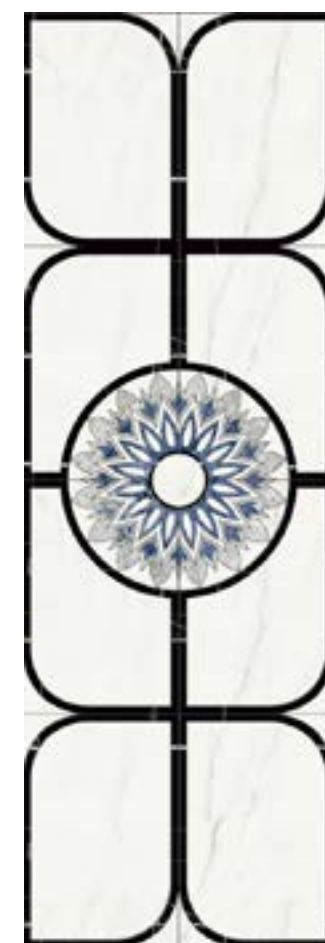
① WJP2003-1
SIZE: 3600×2400mm



EUROPEAN STYLE

HALLWAY

③ WJP2003-3
SIZE: 3600×1200mm



EUROPEAN STYLE

FULL OF LIFE

Element: Buttercup leaf: one of the theme elements of European style, symbolizing vigorous vitality, positive, wisdom and art.
Iris fragrans: European classic element symbolizes light.

The color of European style tends to be bright and beautiful. The main color of water jet is plain white and low-key and simple (Silver Grey) embellished with high-profile bright (Verde Alpi) makes the water jet look luxurious.

The combination of the classic European acanthus leaf and iris enhances the overall gorgeous feeling. It contains Italian life is full of vigor and vitality, with bright future and bright future.



① WJP2004-2
SIZE: 1800×1200mm



② WJP2004-1
SIZE: 1200×1200mm

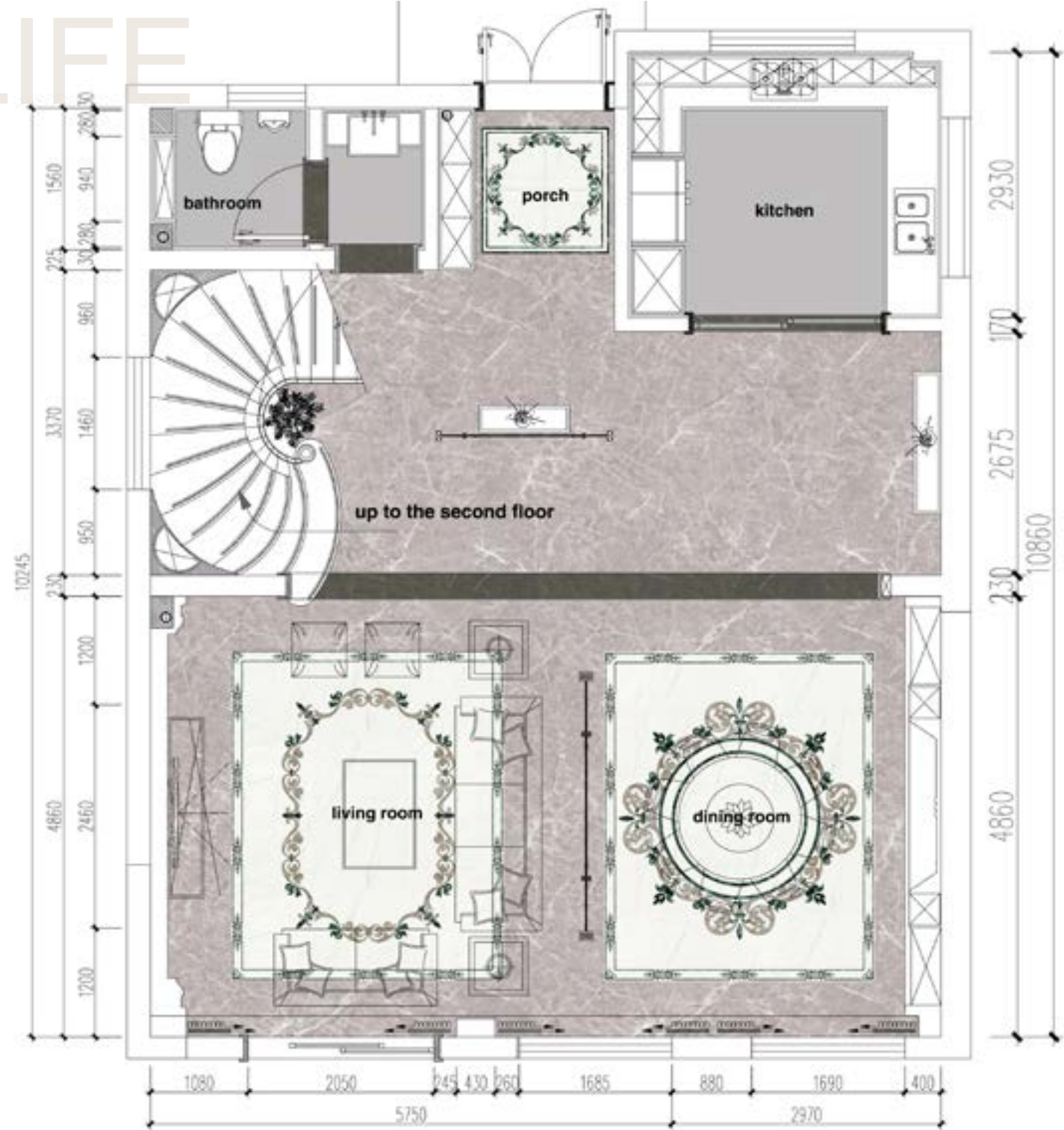


③ WJP2004-3
SIZE: 600×600mm



④ WJP2004-4
SIZE: 150×150mm/900×150mm

FULL OF LIFE





EUROPEAN STYLE

LIVING ROOM

① WJP2004-2
SIZE: 1800×1200mm



EUROPEAN STYLE

DINING ROOM

② WJP2004-1
SIZE: 1200×1200mm



EUROPEAN STYLE

CLASSIC CURVE

Elements: C-shaped, S-shaped and other curve elements

The use of mosaic to extract European classical curve elements. The light, thin and soft curve makes the whole design elegant and noble. The warm White Onyx, with the quiet and elegant Armani Grey, is decorated with the mysterious Diamond Blue, which makes it striking, gorgeous and noble as a whole, and gives people a sense of elegance like the vast galaxy.

It means a great career and success.



① WJP2005-1
SIZE: 2400×1800mm



② WJP2005-2
SIZE: 3600×2400mm

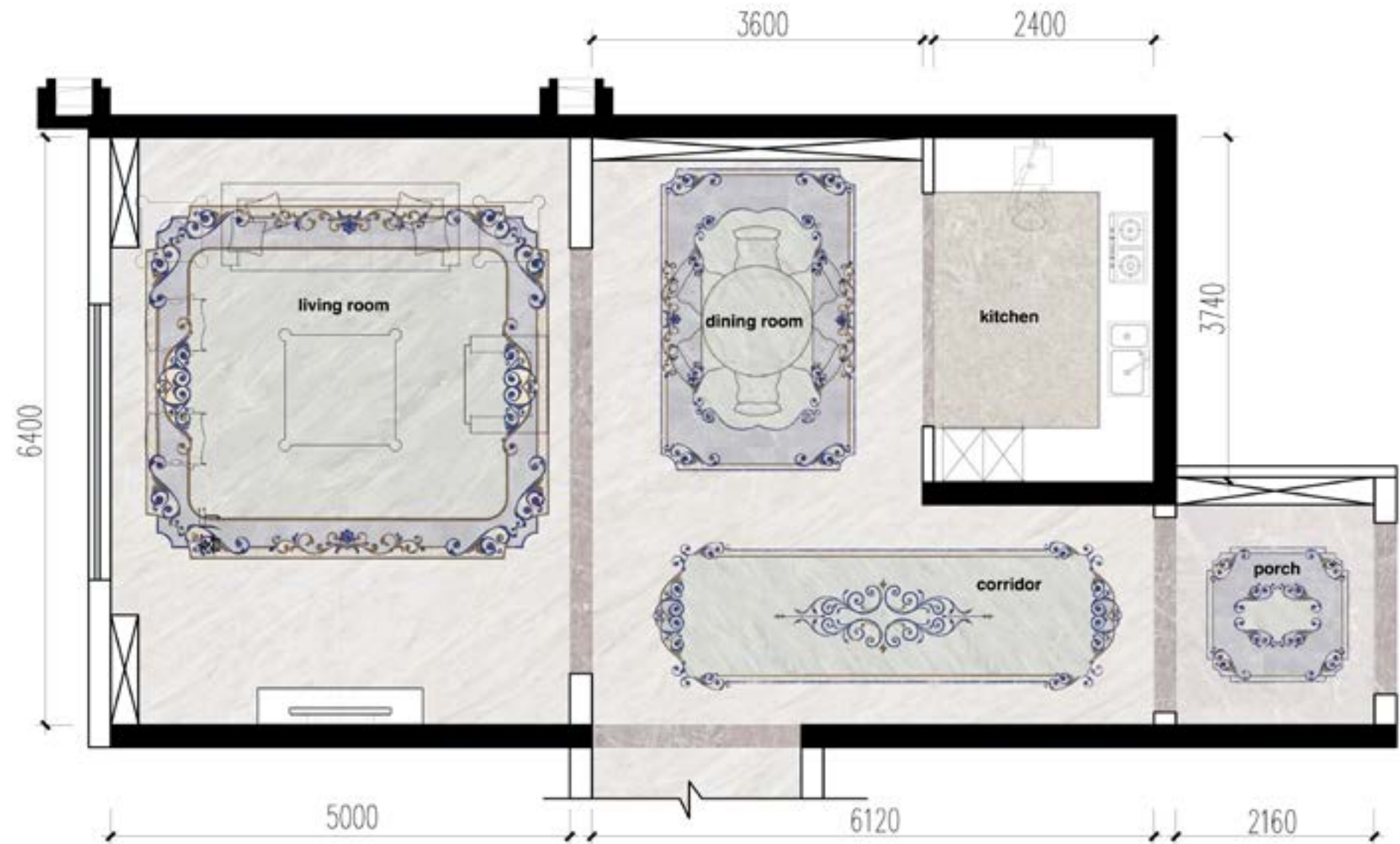


③ WJP2005-3
SIZE: 1200×1200mm



④ WJP2005-4
SIZE: 3600×1200mm

CLASSIC CURVE





EUROPEAN STYLE

LIVING ROOM

① WJP2005-1
SIZE: 2400x1800mm



EUROPEAN STYLE

DINING ROOM

② WJP2005-2
SIZE: 3600x2400mm





EUROPEAN STYLE

FOYER

③ WJP2005-3
SIZE: 1200×1200mm



EUROPEAN STYLE

HALLWAY

④ WJP2005-4
SIZE: 3600×1200mm



EUROPEAN STYLE

SHOW FRAGRANCE

Element: shell: many European countries are close to the sea, and shellfish resources are very rich. Since ancient times, shell has been an element of European creation. A symbol of romantic love.

Rose: European classical elements symbolize beauty and goodness.

Pteris: European classic plant element, represents tenacity, patience, vitality and health.In order to highlight the warm and gorgeous effect of European style atmosphere, the main color of the water jet is warm and elegant (Roman Jade), and the simple and elegant (Copper Dune) accentuates the color, making the water jet more prominent in the space. The water saber combines the classic shell, rose and pteris elements of European style. The smooth lines and the deep and shallow blocks set off the delicate sense of flowers and plants.It means family harmony and happiness.



① WJP2006-3
SIZE: 3600×2400mm



② WJP2006-6
SIZE: 3600×2400mm



③ WJP2006-4
SIZE: 3600×1200mm



④ WJP2006-2
SIZE: 1800×1800mm



⑤ WJP2006-1
SIZE: 1200×1200mm

SHOW FRAGRANCE





EUROPEAN STYLE

LIVING ROOM

① WJP2006-3
SIZE: 3600×2400mm



EUROPEAN STYLE

DINING ROOM

② WJP2006-6
SIZE: 3600×2400mm





EUROPEAN STYLE

HALLWAY

③ WJP2006-4
SIZE: 3600×1200mm



ITALIAN STYLE

DIAMOND

Element: Diamond - a symbol of love as firm as rock and everlasting

The design inspiration comes from the diamond - diamond, which has been finely carved. The elements have been broken up and recombined into simplified geometric patterns. The large and small random layout weakens the original square pattern of the space, making it interesting.

In the color matching, Statuario Calacatta is the main tile, combined with the eternal classic Diamond Blue, mysterious and noble Verde Alpi, low-key and elegant Claros Grey(light), Claros Grey(dark) and Armani Grey, showing a noble and elegant picture.



① WJP2007-1
SIZE: 3600×3600mm/4200×4800mm



② WJP2007-2
SIZE: 2400×3600mm/3600×4000mm



③ WJP2007-3
SIZE: 1200×3600mm/1200×4200mm



④ WJP2007-4
SIZE: 1200×1200mm/1800×1800mm



DIAMOND

ITALIAN
STYLE

LIVING ROOM

① WJP2007-1
SIZE: 3600×3600mm/4200×4800mm





ITALIAN STYLE

DINING ROOM

② WJP2007-2
SIZE: 2400×3600mm/3600×4000mm



CHINESE STYLE

RIDE A WAVE

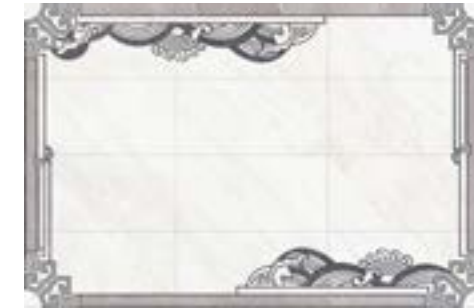
Element: Wave - it means kindness, love, sincerity, honesty and noble character
Convolution texture - meaning auspiciousness and wealth

Convolution texture - meaning auspiciousness and wealth
In this case, the mosaic element is extended by the wave design, combined with the Chinese classic element - the loop pattern. The artistic wave pattern is full of passion and strength, which means smooth sailing, marching forward bravely and continuous wealth.

Elegant and noble white (White Onyx) in color, combined with low-key luxury high-grade grey (Claros Grey(dark), Claros Grey(light)).



① WJP2008-1
SIZE: 3600×3600mm/4200×4800mm



② WJP2008-2
SIZE: 2400×3600mm/3600×4000mm



③ WJP2008-3
SIZE: 1200×3600mm/1200×4200mm



④ WJP2008-4
SIZE: 1200×1200mm/1800×1800mm

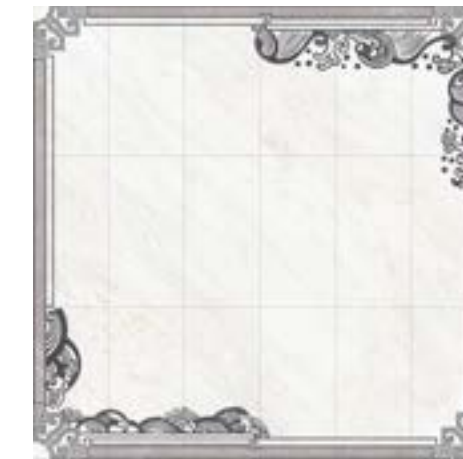
RIDE A WAVE



CHINESE STYLE

LIVING ROOM

① WJP2008-1
SIZE: 3600×3600mm/4200×4800mm





CHINESE STYLE

HALLWAY

③ WJP2008-3
SIZE: 1200×3600mm/1200×4200mm



HONG KONG STYLE

THE RISING SUN

Elements: the rising sun + Egyptian headdress pattern - a symbol of hope, optimistic and cheerful.

The elements are extracted from the early morning sun light and the patterns of Egyptian Pharaoh's headwear. They are artistically transformed into radial and smooth lines. They are combined into a mosaic by symmetrical means. The picture is full of layers and full of power. The combination of the two elements implies a bright future. It is thriving and has a bright future.

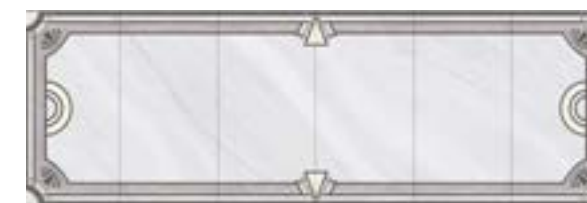
The colors are soft and elegant white (Bardiglio) as the main tile, low-key luxury gray (Claros Grey light) as the transition, mysterious gray (Pietra Grey) and Warm Beige (Crema Marfil) as the embellishment. It presents a sense of calm, elegant, leisure and modern.



① WJP2001-1
SIZE: 3600×3600mm/4200×4800mm



② WJP2001-2
SIZE: 2400×3600mm/3600×4000mm

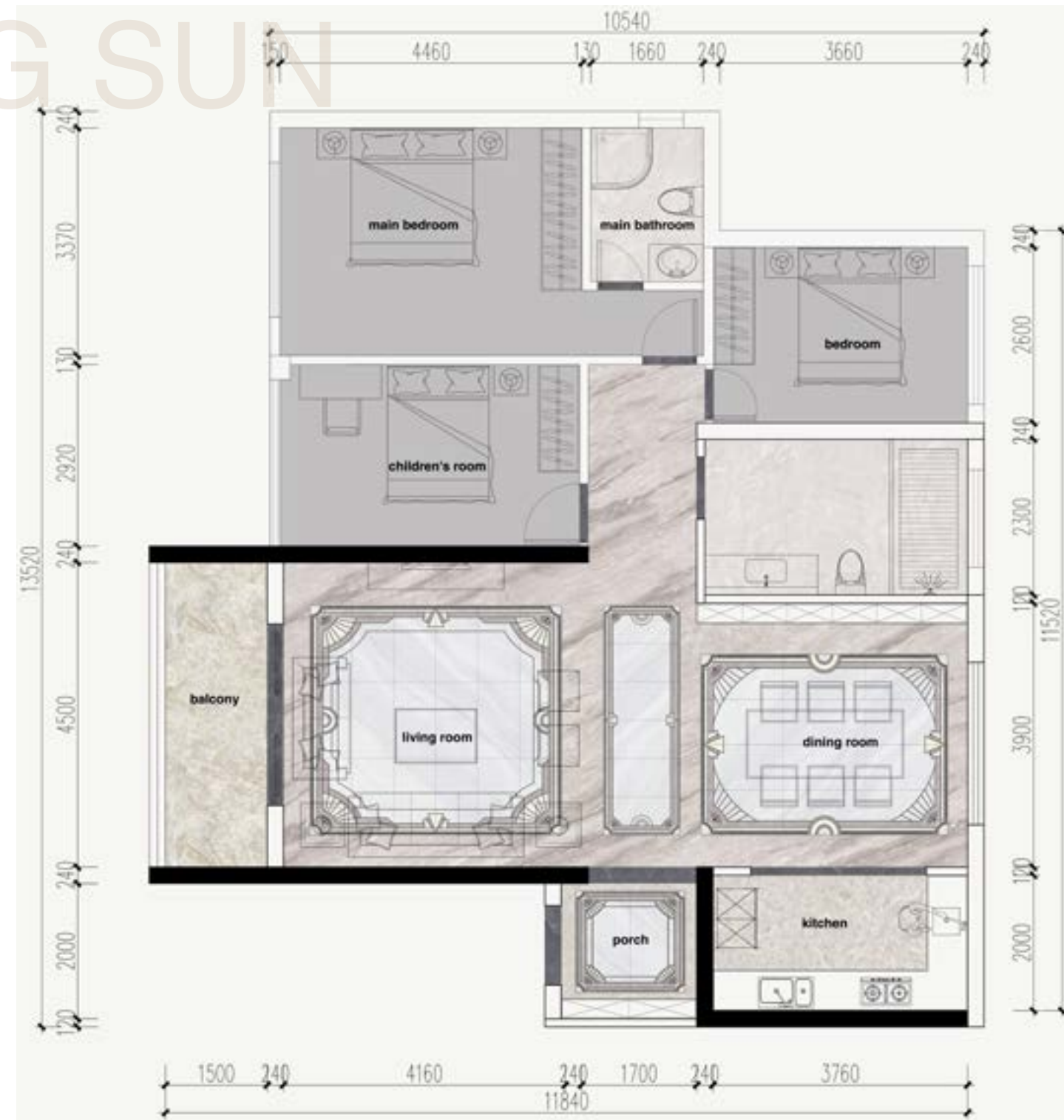


③ WJP2001-3
SIZE: 1200×3600mm/1200×4200mm



④ WJP2001-4
SIZE: 1200×1200mm/1800×1800mm

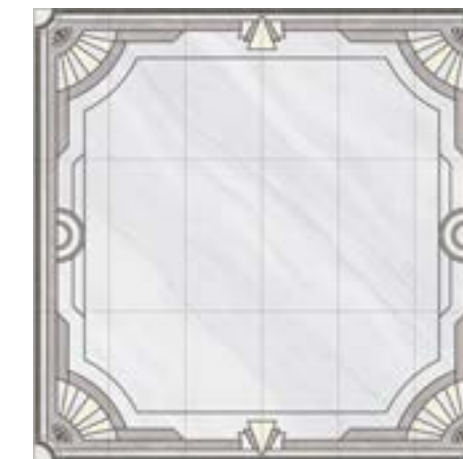
THE RISING SUN



HONG KONG STYLE

LIVING ROOM

① WJP2001-1
SIZE: 3600x3600mm/4200x4800mm

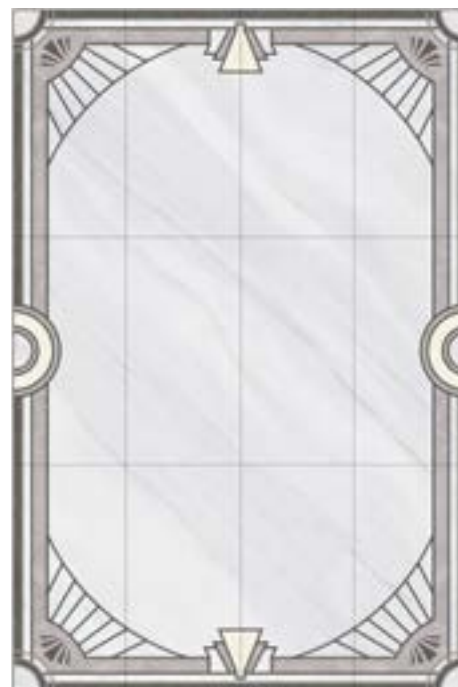




HONG KONG STYLE

DINING ROOM

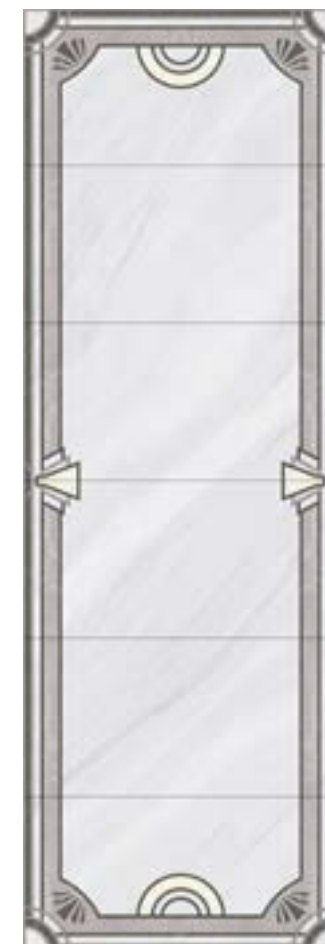
② WJP2001-2
SIZE: 2400×3600mm/3600×4000mm



HONG KONG STYLE

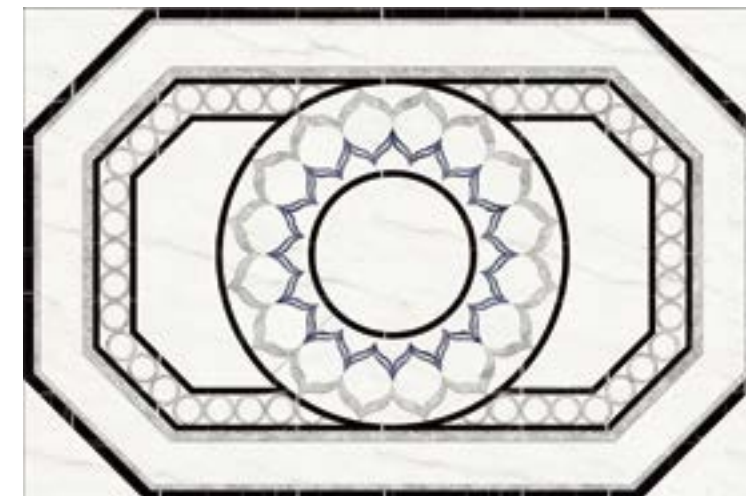
HALLWAY

③ WJP2001-3
SIZE: 1200×3600mm/1200×4200mm





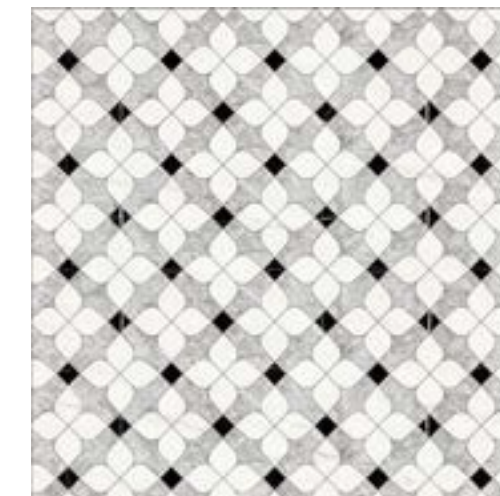
MEDALLION



PH224 3600x2400mm



PH225 1800x1800mm



PH226 2000x2000mm



PH227 3600x1200mm



PH228
1200x1200mm



PH229
1200x1200mm



PH230
1200x1200mm



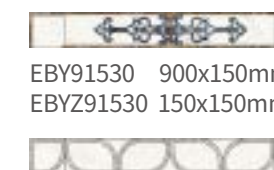
PH231 800x2400mm



PH232 600x900mm



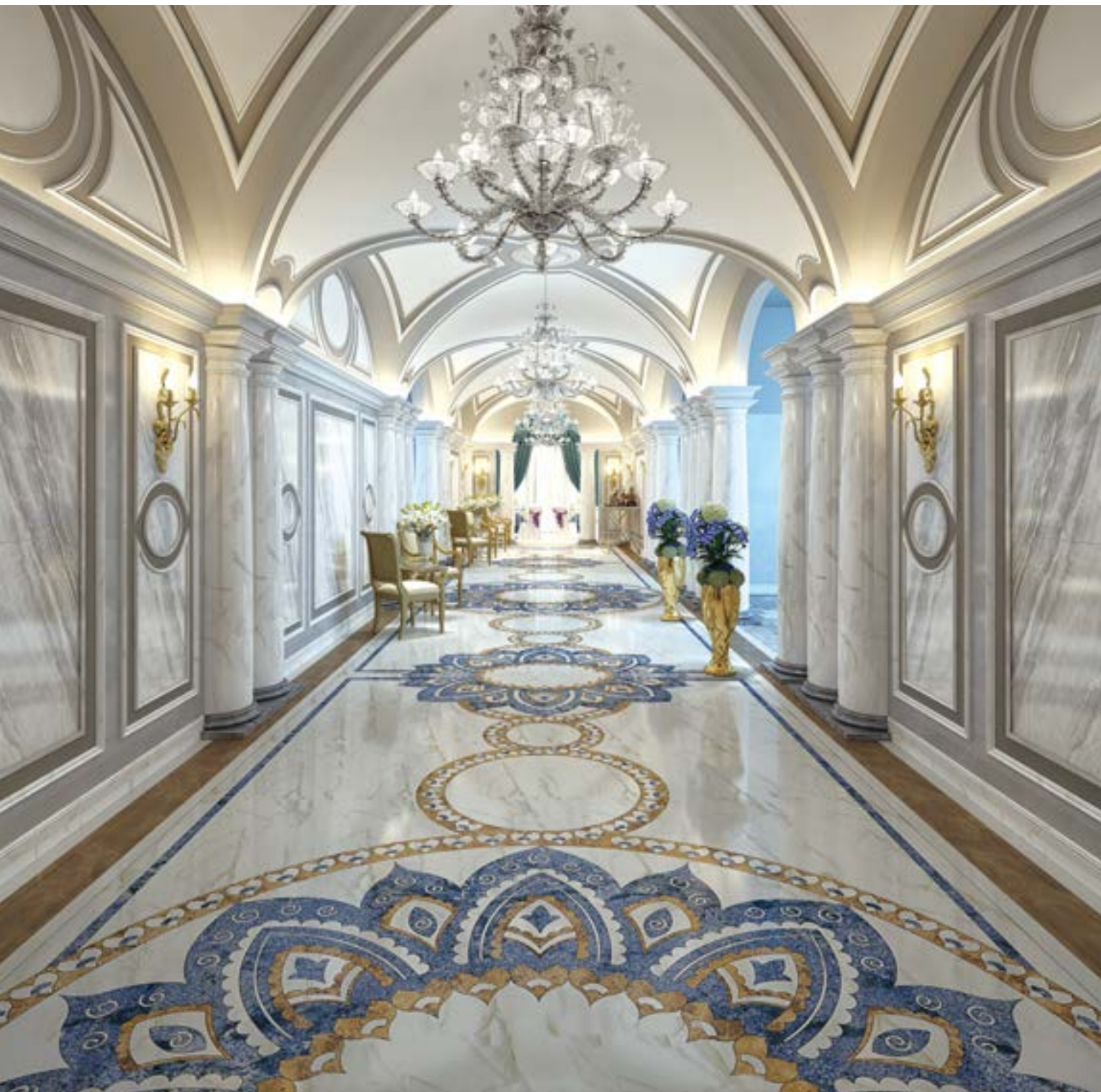
PH233
600x600mm



EBY91530 900x150mm
EBYZ91530 150x150mm



EBY91531 900x150mm
EBYZ91531 150x150mm



MEDALLION



PH234 7200x3600mm



PH097 3600x3600mm

MEDALLION



PH061 3600x3600mm



PH067 3600x3600mm



MEDALLION



PH062 3600x3600mm



PH014 3600x3600mm



PH046 3600x3600mm



PH001 3600x3600mm

MEDALLION



PH239 3600x3600mm



PH240 3600x3600mm



PH241 3600x3600mm



WJP242 1800x1800mm



PH235 3600x3600mm



PH236 3600x3600mm



PH237 3600x3600mm



PH238 3600x3600mm



PH243 2700x2700mm



PH244 1800x1800mm



PH245 1800x1800mm



PH246 1800x1800mm



Sacred Lotus

In China, lotus is synonymous with sacredness and nobleness. Since lotus and harmony are homonyms in Chinese pronunciation, the theme of Sacred Lotus is to show the harmonious family. Being inclusive in itself, lotus also reminds us to give more love and tolerance to our families.

It is suitable for installations in porch, living room and study room. This work is agile and life-like, presenting a unique home experience. Only family harmony can bring about prosperity, wealth and health, and that everything goes well.



PH247



PH248



PH249



PH250



Bamboo

Gani marble tiles is good at meticulous craftsmanship in details with inanimate materials, in which way the spiritual sublimity can be turned into eternal and infinite beauty.

Plum bloom in bitter cold with its strong fragrance, which signifies that plum is beautiful out of vulgarity and gritty even in the hostile environment.

Bamboo does not wither in winter. It has beauty in itself, for it is upright, modest and elegant. The Employment of natural jade combined with the rich texture of GANI marble tiles shows our inheritance of traditional culture.

Annunciation Birds humming in the flowers foretells us that happiness lasts forever and that we will live a long life.



PH251 (customization available)





Auspicious Nine Carps

Nine represents long-term happiness and well-being while Fish is a metaphor for all things going smoothly. Therefore, the nine carps not only imply good luck, but also bear meanings of getting things done smoothly, making a good fortune and getting promotion. The whole picture is warm and harmonious, expressing a long-term wish for good work and life, health and wealth, and happiness!



PH252 1800x900 (customization available)

Cranes Chirping out of the Highest of Heavens

The mountains are cascading layers after layers until they gets to the Highest of Heavens, surrounded by misty white clouds, upright pines and swirling cranes.



PH253 1800x900 (customization available)

Brave the Wind and the Billows

Nine represents long-term happiness and well-being while Fish is a metaphor for all things going smoothly. Therefore, the nine carps not only imply good luck, but also bear meanings of getting things done smoothly, making a good fortune and getting promotion. The whole picture is warm and harmonious, expressing a long-term wish for good work and life, health and wealth, and happiness!
The sail is designed with Fior Di Pesco Carnico Grey and Diamond Blue, a signature piece of blue which matches the white sky-like background that Statuario Calacatta White presents.



PH254 1800x900 (customization available)



SHOWER BOARD



LYY001
700X1000mm

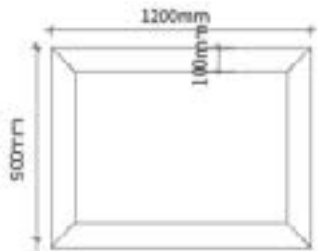


LYY002
700X1000mm



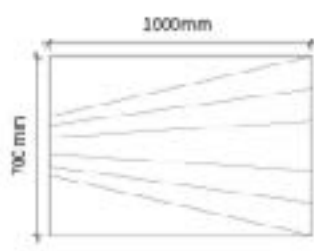
LYY003
700X1000mm

● board for blocking water



- ▲ 1. Available for any marble tiles.
- 2. 1200mm of length, installed and cut on-site according to measurement.
- 3. Usually used as blocking water.

● board for stepping



- ▲ 1. Available for any full body marble tiles
- 2. Available for V-shaped and U-shaped grooves.
- 3. Delivered in standard tiles with adjustment of measurement on site.

● board for leaking water



- ▲ 1. Available for any marble tiles.
- 2. 1200mm of length, installed and cut on-site according to measurement.
- 3. Installed lower than the board for stepping, with the consideration of leaking water.



SHOWER BOARD



LYK001 700X1000mm
LYD001 70X60X1200mm

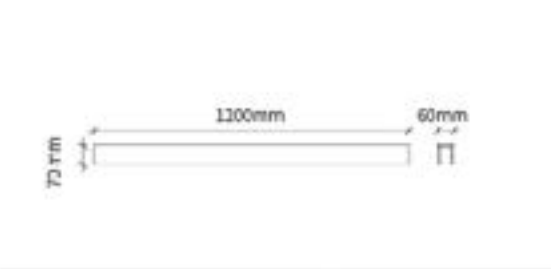


LYK002 700X1000mm
LYD001 70X60X1200mm



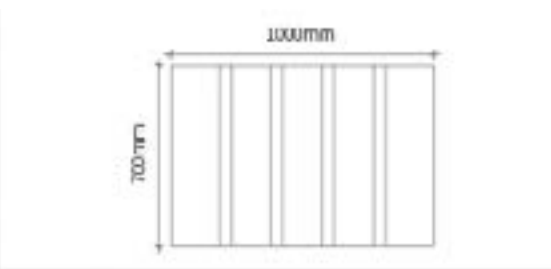
LYK003 700X1000mm
LYD001 70X60X1200mm

● board for blocking water



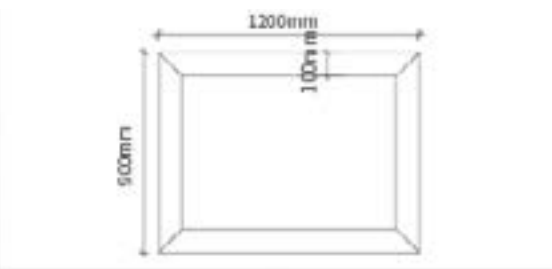
- ▲ 1. Available for any marble tiles.
- 2. 1200mm of length, installed and cut on-site according to measurement.
- 3. Usually used as blocking water.

● board for stepping



- ▲ 1. Available for any full body marble tiles
- 2. Available for V-shaped and U-shaped grooves.
- 3. Delivered in standard tiles with adjustment of measurement on site.

● board for leaking water



- ▲ 1. Available for any marble tiles.
- 2. 1200mm of length, installed and cut on-site according to measurement.
- 3. Installed lower than the board for stepping, with the consideration of leaking water.



TABLE PANEL



STAIRCASE



STAIRCASE

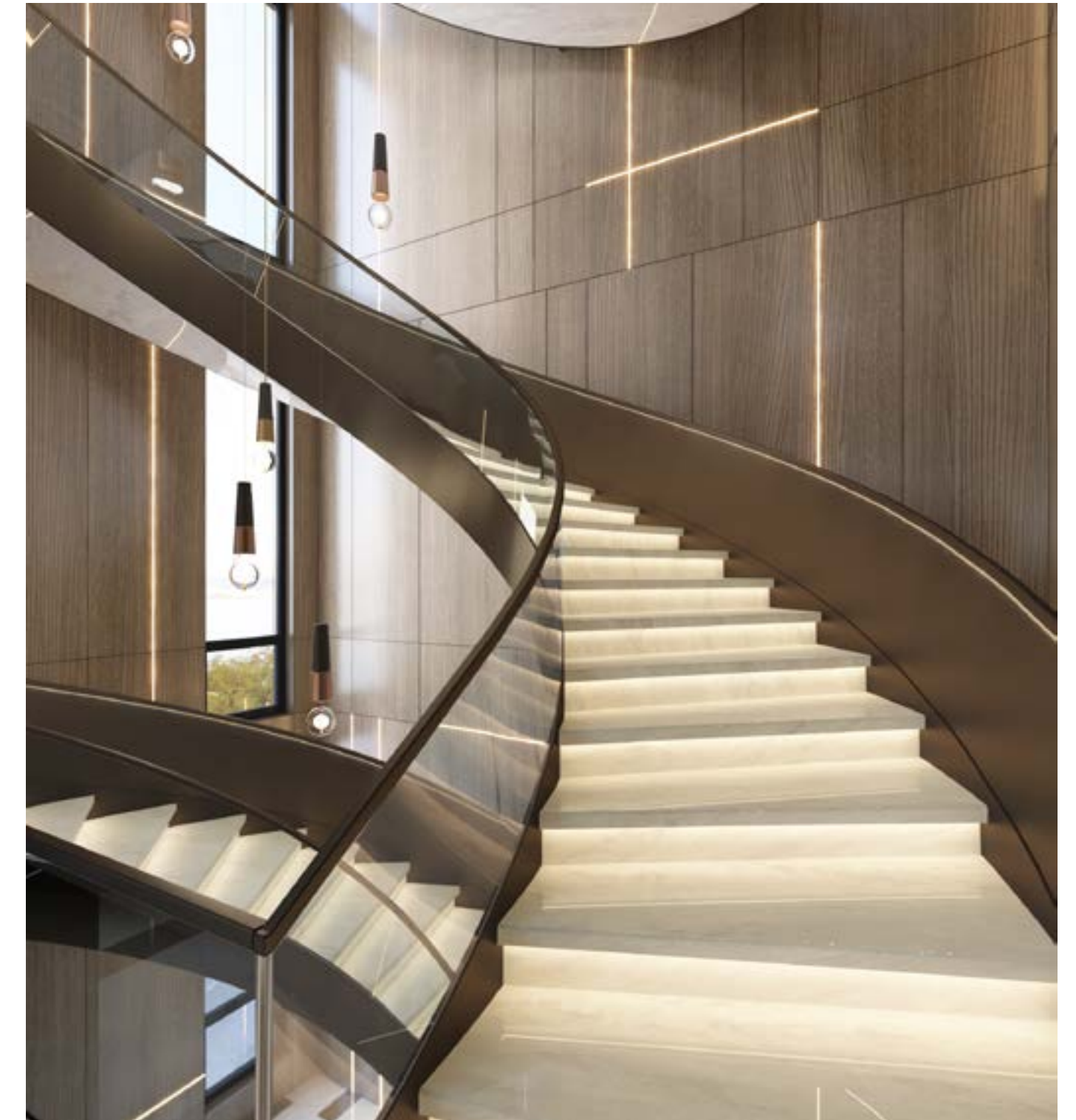


STAIRCASE

The luminous staircase is designed not only for satisfying daily needs of our clients, but also for adding functions for our smart life, such as light-transmitting, modular control and intelligent control. It gains improvement in safety and maintenance. The tiles of the steps can also be easily replaced according to your interior design.

Features:

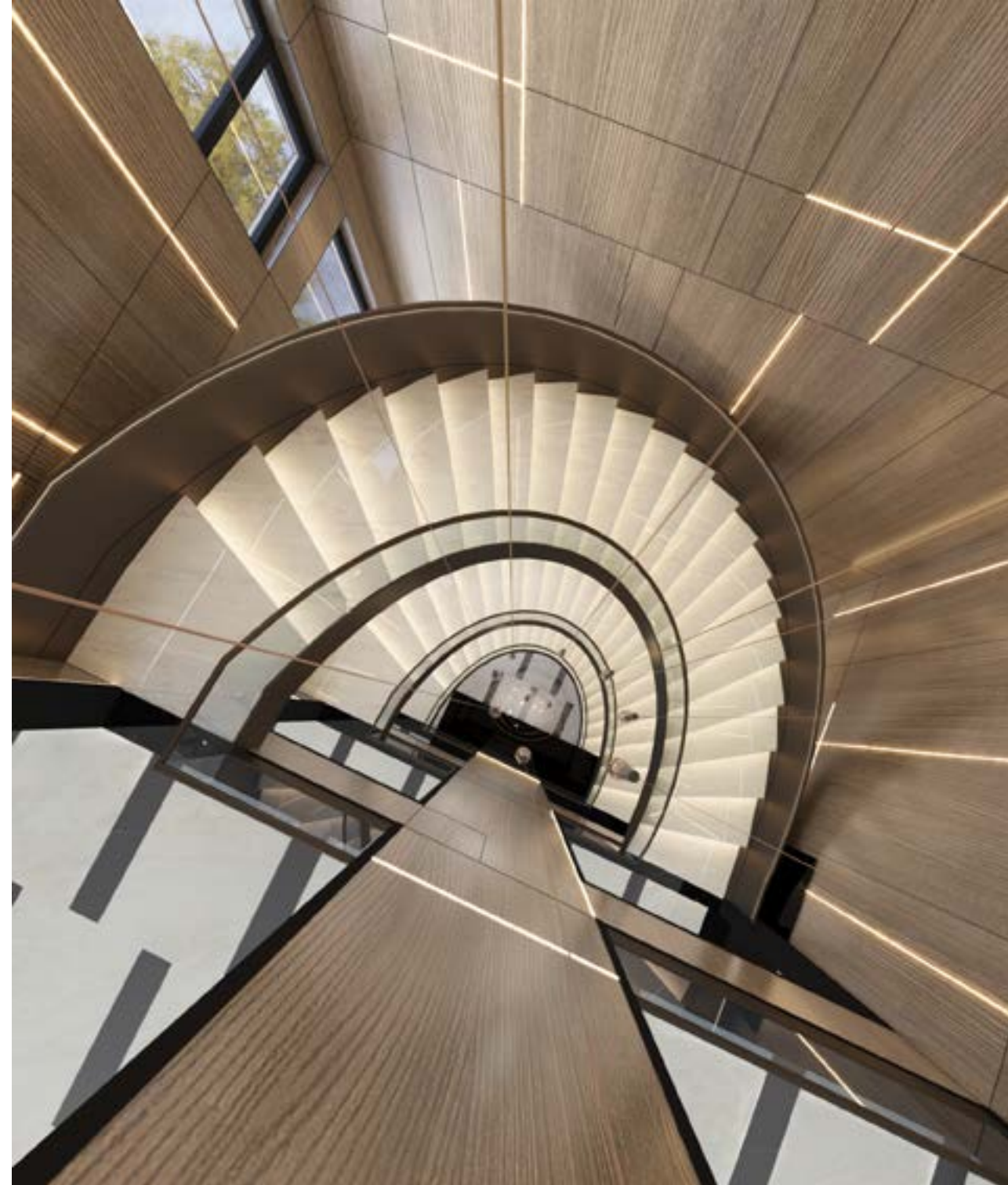
1. The tiles are non-slip, good in light-transmission, strong in bending strength and high in hardness.
2. Its structure is a scientific design with modular parts and can be disassembled easily.
3. The lamp components are moisture-proof, mildew-proof, electrical leakage-proof and energy-saving.
4. The light effect can be DIY arranged, and the lighting control intelligent system can be upgraded.
5. The stepping panel can be replaced at will according to the change of the customer's interior decoration.



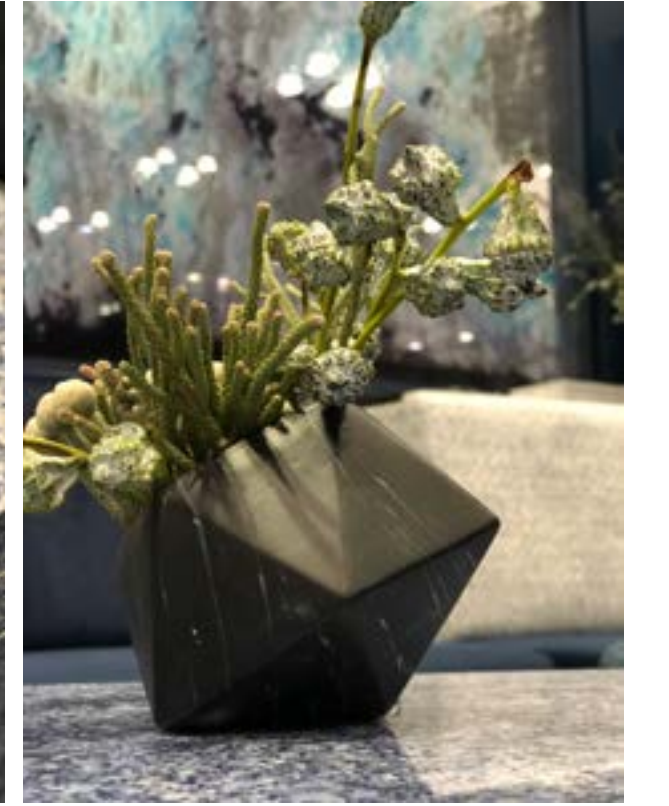


Services:

The light-transmitting staircase will be installed with a promised service package. The package solves a series of problems during design, measurement, processing, transportation, construction, installation, and maintenance, etc. so as to our customers are free of worry during the process.



DEEP PROCESSING TECHNOLOGY



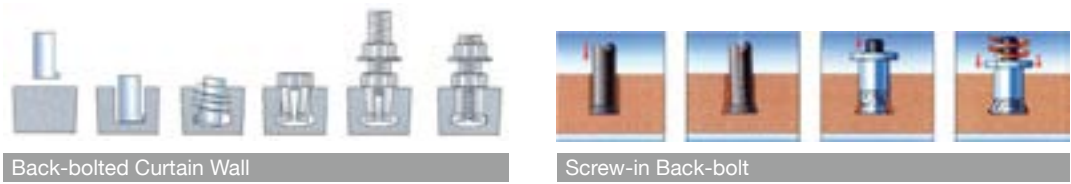


CURTAIN WALL

Back-bolted Curtain Wall

With the help of professional drilling equipment, a tile will be drilled into a cone-shaped hole at the back according to the designed measurement. Then implant an anchor bolt into the hole and add a screw until the bolt completely expand at the bottom to match the size of the hole, forming a stress-free module. Then fix a hook piece on the tile with an anti-slip nut, and then install the tile on the mounting bracket.

- 1. This curtain wall can be used in building renovation, processing, construction, installation, project acceptance and maintenance in any curtain wall projects, applicable to both non-seismic buildings and civil buildings with a seismic intensity scales of 6, 7 and 8.
 - 2. A 6mm diameter stainless steel back bolt should be used, and the connecting piece should be made of austenitic stainless steel or aluminium alloy with a thickness no less than 3mm.
 - 3. There are two major types of back bolts, screw-in back bolts and percussion back bolts.
 - 4. The processing of the back bolt hole should be done by special drilling machinery.
- 安装原理见下图：



- 5. The number, position and depth of the back bolts should be determined by the size, installation method and bearing capacity of the tile. The distance between the centre of the back bolt hole and the edge of the tile should be greater or equal to 50mm while less than or equal to 25% of length of the edge.
- 6. The holes must not be damaged or cracked, and the inside of the holes should be smooth and clean.
- 7. After the back bolt hole is processed, the remaining thickness of the tile (which is the distance from the bottom of the hole to the surface of the tile) shall not be less than 3mm.
- 8. The tolerance of the measurement of the back bolts should meet the following requirements:

Item	Diameter of Hole		Expansion of Bolt		Position	Distance between Hole	Distance between Hole and Edge
	Diameter	Depth	Diameter	Depth			
Tolerance	0~+0.4	0~+0.3	0~+0.3	0~+0.4	±0.5	±1.5	最小 50

Connecting Piece



T-shaped

F-shaped

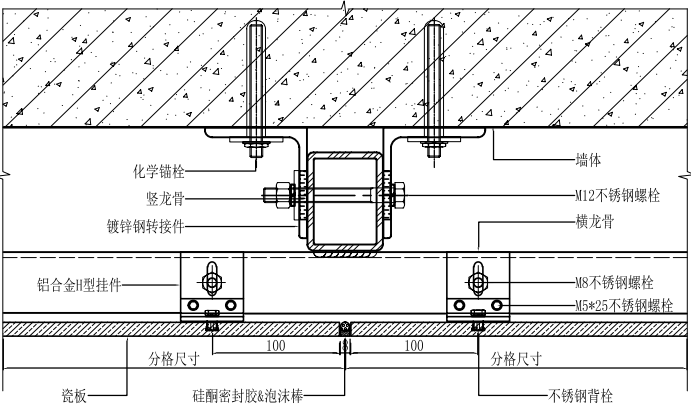


Ear-shaped



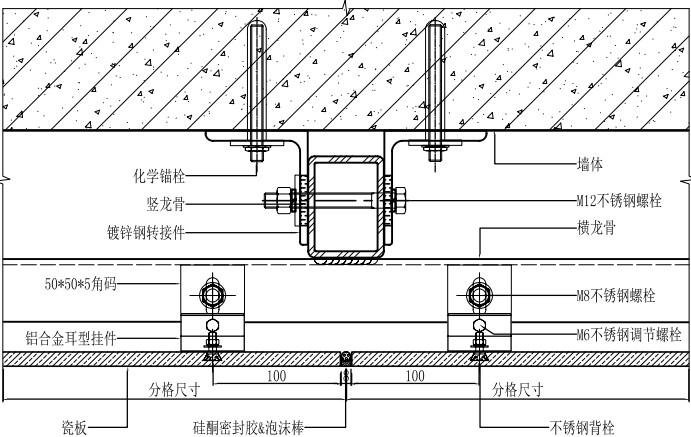
Back-bracketed

Section View of H-shaped Back-bolt Curtain Wall

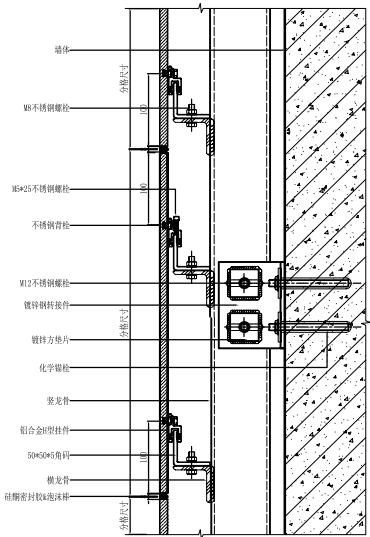


① 背栓式H型-瓷板干挂横剖节点图 1:3

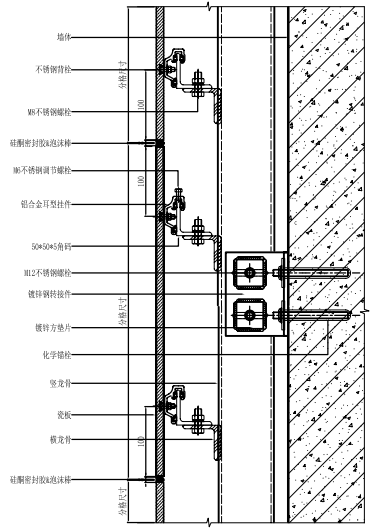
Section View of Ear-shaped Back-bolt Curtain Wall



① 背栓式耳型-瓷板干挂横剖节点图 1:3



② 背栓式H型-瓷板干挂竖剖节点图 1:3



② 背栓式耳型-瓷板干挂竖剖节点图 1:3

Common Connecting Piece



Small Angle Installation at the Back



Small and Curved Angle of 45 degree



Glued and bolted at both angles at the back



01 What are the advantages of seamless joint medallion?

Normal medallion partition lines is designed according to the specifications of tiles,which makes the pattern looks separated and split, and thus the visual effect is poor. The ultra-high precision water jet technology makes the seam more dense, the picture smoother and the spatial effect more coherent. No dirt is hidden in the crevice after use, so it is more convenient to maintain.

02 Why GANI make seamless joint medallion?

In order to meet the needs of high-end decoration quality, the GANI seamless joint paving we launched in 2018 has received positive response from consumers. Medallion is an important part of space decoration, and its size, flatness and gap standards must be fully upgraded in order to cooperate with seamless joint paving and create a more perfect user space.
For this reason, we have set up the standard of seamless joint medallion production and service in the whole industry, adopted the top quality marble tiles as raw materials, built a new production base of supporting centre over 20,000 square meters, introduced a team of whom has experience over 10 years in design, production and operation to enable products and services to satisfy consumers demand.

03 Is seamless joint medallion expensive?

The price of medallion mainly depends on the cost of raw materials, processing and packaging. Seamless joint medallion will increase the consumption of raw materials by about 20% because of its special manufacturing requirements. Meanwhile, the cost of processing and packaging upgrade will also increase. We think that the promotion of seamless joint medallion is conducive to improving the quality of consumers space. We only take the increase in raw material costs into consideration regardless of processing and packaging factors, so our sales price only increase by about 20%.

04 What is the difference between the construction of seamless joint medallion and normal medallion?

Seamless joint medallion requires high flatness and on-site control of seams. The flatness error is less than 0.3mm, and the gap is controlled within 0.5mm. To achieve this, on-site constructors are required to work strictly in accordance with the company's standards and procedures for seamless joint laying. In order to ensure the field effect, the supporting centre puts out "tile laying flattener" and "seam glue on the surface of ceramic tile" (the traditional sealant can't be used in the 0.5mm joint condition).

05 What about the colour difference between the seamless joint medallion products ordered from the supporting centre and the main tile products in the periphery?

The whole case of floor products can be submitted to the supporting centre for delivery planning, which requires accurate size measurement and drawing. If the size can not be specified, you can consider deliver the boarder line, medallion products within boarder line and blank tiles from the supporting centre.

06 What if the product is damaged?

Our medallion products are based on computer CAD files to make a series of parts. When a part is damaged, please find the corresponding drawing number and provide it to us. We will manufacture a replacement part according to the serial number.

07 What should we pay attention to in our daily lives?

Gani marble tiles are durable, anti-skid and free of stain. Gani seamless joint medallion retains these features with the unique seamless joint technology. There will be no dirt in the joints and the tiles are anti-ageing, so there is no need for special maintenance.

08 What are the advantages compared with stone medallion?

Stone, as its texture is soft, not resistant to friction, acid and alkali, oxidation, easy to dye, the cost of maintenance after family use is higher. And in the process of stone medallion production, there will inevitably be gravel, dark crack, color mixing and other situations, which lay hidden dangers for the future weathering, cracking, discolouration and other changes of stone. Ordinary tiles medallion has more tiles partition lines. Gani seamless joint medallion creatively adopts partition design to ensure complete pattern and super-high precision water jet technology, which makes consumers feel no gap beyond 1 meter of vertical visual distance. This makes Gani marble tiles seamless joint medallion recognized by more high-end consumers.