



TQJ-1400W8

Applications

1350-1450MHz Communications/ Wireless Data transmission syste/ Wireless Paging System

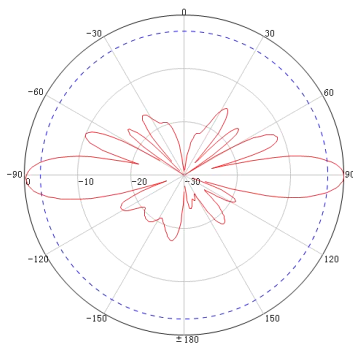
Electrical Specifications

Frequency Range (MHz)	1350~1450
Polarization	Vertical
Gain (dBi)	8
Horizontal Beam Width(°)	360
Vertical Beam Width(°)	13
Omni Ripple(dB)	±1.5
Impedance (Ω)	50
VSWR	≤1.8
Maximum Input Power (W)	100

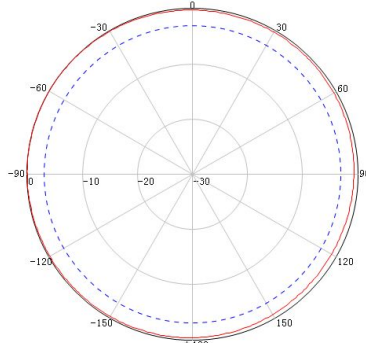
Mechanical Specifications

Connector Type	N Female
Connector Position	Bottom
Antenna Size (mm)	φ 36* (1220±10)
Antenna Weight (kg)	0.8±0.05
The Bracket Weight (kg)	0.45
Radome Material	Fiberglass
Antenna Colour	White or Black (or Customized)
Operating Temperature (°C)	-40~+70
Relative Humidity(%)	5~95
Rated Wind Velocity (m/s)	60
Salt Spray Resistance	96 Hour Neutral (GB/T 2423.17-2008)
Ingress Protection	IP65(Except the outlet hole)
Applications	Outdoor
Mounting	Mast mounting(support mast shall be prepared by customer)
Suitable Pole Diameter	φ 40~ φ 50
Mounting Kit	JM-2UI

Typical patern E Plane



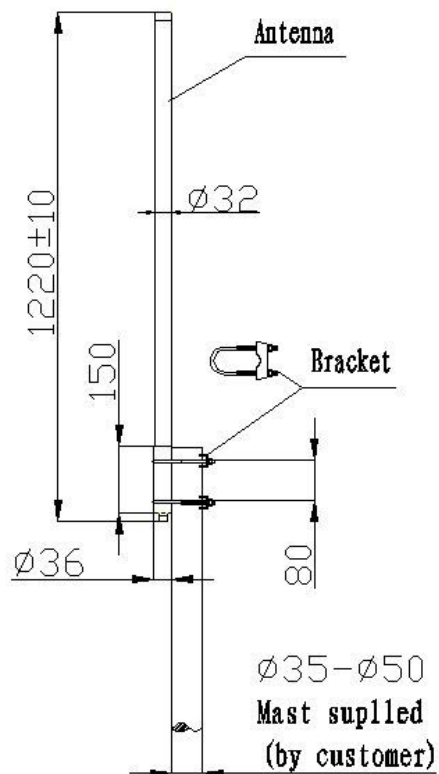
Typical patern H Plane



Product Pictures



Installation Sketch



With JM-2UI Bracket