



TQJ-015IA-2-P500

Applications

VHF Band TETRA Communications/ Wireless Data transmission system/ Wireless Paging System.

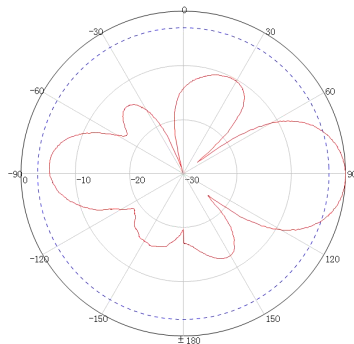
Electrical Specifications

Frequency Range(MHz)	134~174
Bandwidth(MHz)	6
Polarization	Vertical
Gain(dBi)	Omni-directional@5, Directional@7
Vertical Beam Width(°)	35
Impedance(Ω)	50
VSWR	≤ 1.5
Maximum Input Power(W)	500
Lighting Protection	DC Ground

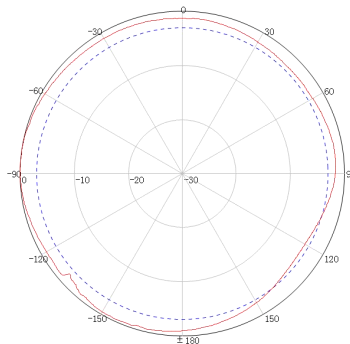
Mechanical Specifications

Connector Type	N-Female
Connector Position	Bottom-end of the cable
Antenna Size(mm)	3028 \pm 30
Antenna Weight(kg)	4.05 \pm 0.3 (exclude the bracket)
The Bracket Weight(kg)	2.1
Antenna Colour	Primary Colour
Operating Temperature($^{\circ}$ C)	-40~+70
Relative Humidity(%)	5~95
Rated Wind Velocity(m/s)	60
Ingress Protection	IP65
Mounting	Mast mounting (support mast shall be prepared by customer)
Suitable Pole Diameter	Φ 40~ Φ 50
Mounting Kit	JM-DB

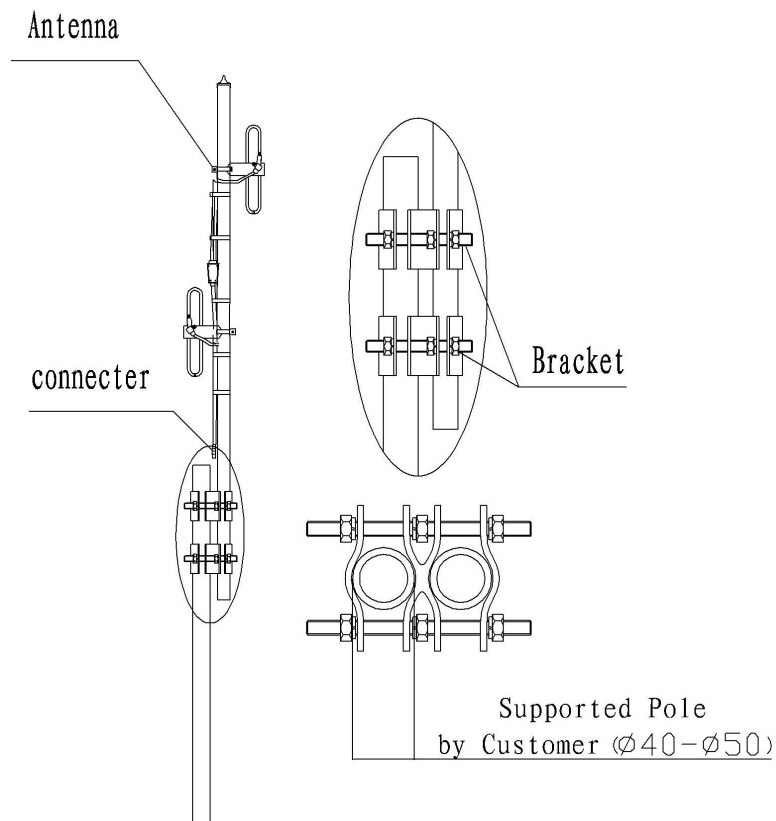
Typical Pattern E Plane



Typical Pattern H Plane



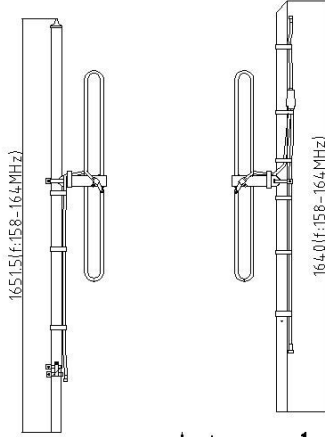
Product Pictures

**Installation Sketch**

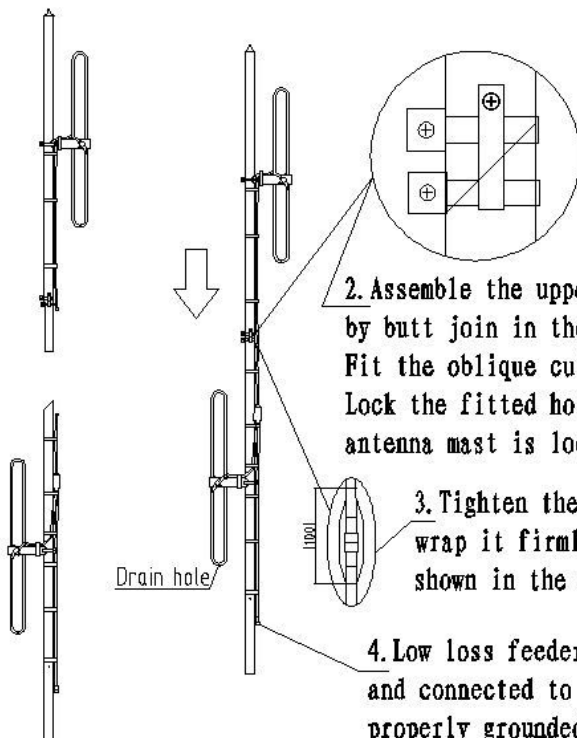
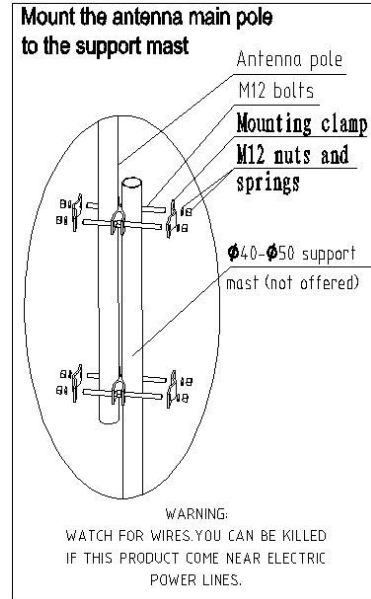


Installation Sketch

1. Unpack and inspect the following components



Antenna upper mast
Antenna lower mast



2. Assemble the upper and lower antenna masts by butt join in the direction of arrow, Fit the oblique cut of the two components together, Lock the fitted hose clamp, And check whether the antenna mast is loose..

3. Tighten the connector butt joint and wrap it firmlu with waterproof tape as shown in the figure to prevent water.

4. Low loss feeder provided by the user and connected to lightning arrester And properly grounded, Connector to the radio, attention: After tighrening the connector ,wrap it firmly with waterproof tape to prevent water from entering.