



TDJ-X0727BFG-M

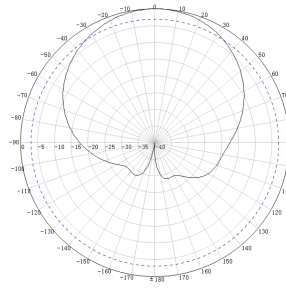
Wall Mounting Antenna

Technical Sheet

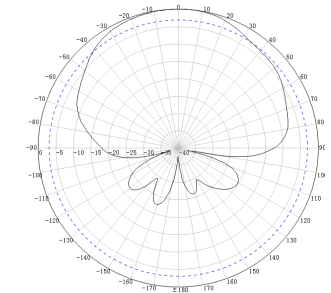


Features

- Wide band with coverage of common systems 698-960/1710-2690 MHz.
- Light weight and small size.
- UV Stable ABS radome .



H Plane



E Plane

Electrical specifications	TDJ-X0727BFG-M	
Frequency range (MHz)	698~960	1710~2690
Polarization	±45°	
Gain (dBi)	2×7	2×8
Half-power beam width (°)	Horizontal:75±10 Vertical:70±10	Horizontal:70±10 Vertical:50±10
Front-to-back ratio (dB)	≥15	≥25
Impedance (Ω)	50	
VSWR	≤1.8	≤1.8
Isolation (dB)	≥22	
Intermodulation IM3 (2×33dBm carrier))	≤-140dBc	
Maximum power (W)	50	
Lighting protection	DC Ground	
Mechanical specifications		
Connector	N Female	
Height/width/depth (mm)	325*205*70	
Weight (kg)	1.5	
Radome material	ABS	
Radome color	White	
Mounting	Wall Mounting or Pole Mounting	
Operating temperature (°C)	-40~60	
Application	Indoor or Outdoor	

Installation Sketch

