

TDJ-D5970P9A

Dish Antenna Technical Sheet



Specifications

Model	TDJ-D5970P9A
Freq.Range-MHz	5925-7125
Gain-dBi	32
VSWR	≤2.0
Isolation-dB	≥20
Hor.Beamwidth-°	3.5
Ver.Beamwidth-°	3.5
Front-to-Back Ratio-dB	≥40
Impedance-Ω	50
Polarization	Vertical and Horizontal
Maximum Power-W	100
Connector	2*N Female
Dimensions-m	Φ0.9
Weight-Kg	10.5
Mast Diameter-mm	Φ50-70

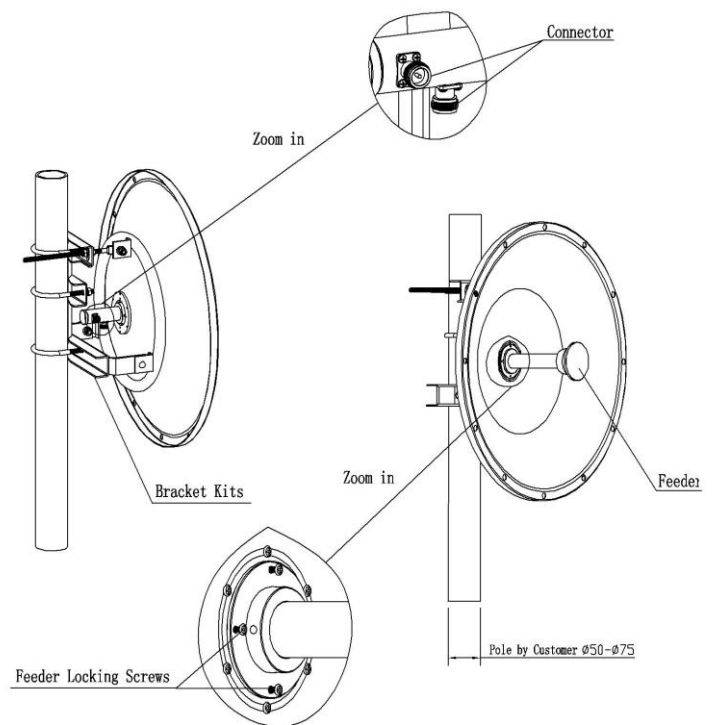
Applications

- 5.925 to 7.125GHz

Features

- High Gain, Good F/B Ratio
- High Precise Parabolic Dish
- UV-Coated Aluminium Alloy
- V/H Polarization is Compatible
- Standard Mounting Kits

Installation Sketch



Installation:

1. Fixing mounting kits and feeder to parabolic dish, notice the polarization mark.
2. Installing assistant bracket, then install antenna above the assistant bracket, not fixing screws of the mounting kits.
3. To make the received signal maximum by adjusting antenna's azimuth and elevation, then fix screws of the mounting kits and move the assistant bracket to the illustrated place.
4. Antenna is work at V/H dual polarization mode. Antenna's polarization can be adjusted by rotating the feeder. When the connector is vertical, antenna work at vertical polarization mode, otherwise at horizontal polarization mode.