

# TDJ-350BKB-Y

## Outdoor Antenna

### Technical Sheet



#### Applications

- 350MHz band
- Point to point, point to multi-point Application
- Client Antenna

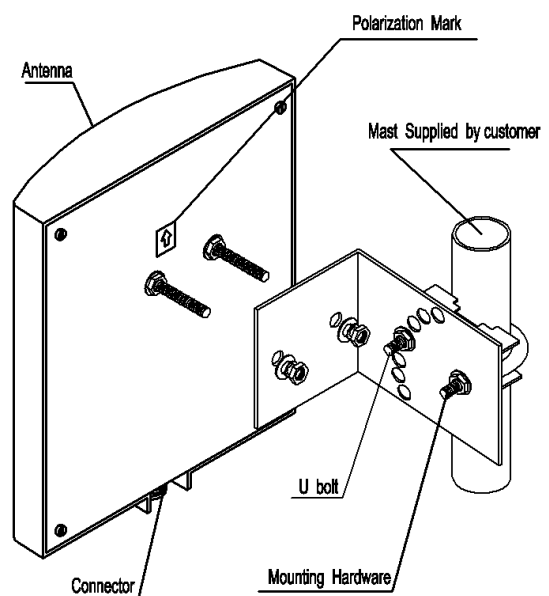
#### Features

- Superior Performance
- Small Size, Low Profile
- Light weight ABS Radome
- Outdoor used
- Integral N-Female Connector

#### Specifications

Model	TDJ-350BKB-Y
Freq. Range-MHz	330~390
Bandwidth-MHz	10
Gain-dBi	5
Horizontal Beamwidth-°	85
Vertical Beamwidth-°	120
F/B Ratio-dB	≥15
VSWR	≤2.0
Impedance-Ω	50
Polarization	Vertical
Max. Power-W	50
Connector Type	N-Female
Dimension-mm	240×230×50
Weight-g	350
Pole Diameter-mm	Φ40~50

#### Installation Sketch



Antenna Mounting Sketch Map

